

For Research Use Only

RPA1 Polyclonal antibody

Catalog Number: 12448-1-AP

1 Publications



Basic Information

Catalog Number:

12448-1-AP

Size:

150ul , Concentration: 650 ug/ml by Nanodrop;

Source:

Rabbit

Isotype:

IgG

Immunogen Catalog Number:

AG3067

GenBank Accession Number:

BC018126

GeneID (NCBI):

6117

UNIPROT ID:

P27694

Full Name:

replication protein A1, 70kDa

Calculated MW:

616 aa, 68 kDa

Observed MW:

70 kDa

Purification Method:

Antigen affinity purification

Recommended Dilutions:

WB 1:500-1:3000

Applications

Tested Applications:

WB, ELISA

Cited Applications:

WB

Species Specificity:

human, mouse

Cited Species:

human

Positive Controls:

WB : HEK-293 cells, K-562 cells, Y79 cells, A431 cells, HeLa cells

Background Information

Replication protein A 1 (RPA1) is a subunit of a stable heterotrimer replication protein A (RPA), which is conserved in almost all eukaryotic species (PMID: 27151292). Usually, RPA1, RPA2 and RPA3 function as a whole to participate in DNA replication, telomere maintenance, DNA recombination, DNA repair, and activation of DNA damage checkpoints. In the cell, RPA has a higher affinity to bind single strand DNA and then to form a fork protection complex with other components such as PTEN and OTUB1, thus maintains genome stability during replication (PMID: 26403191; PMID: 18469000).

Notable Publications

Author	Pubmed ID	Journal	Application
Ma-Sha Huang	31249811	Front Oncol	WB

Storage

Storage:

Store at -20°C. Stable for one year after shipment.

Storage Buffer:

PBS with 0.02% sodium azide and 50% glycerol pH 7.3.

Aliquoting is unnecessary for -20°C storage

***** 20ul sizes contain 0.1% BSA**

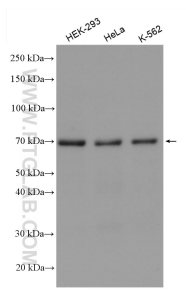
For technical support and original validation data for this product please contact:

T: 1 (888) 4PTGLAB (1-888-478-4522) (toll free in USA), or 1(312) 455-8498 (outside USA)

E: proteintech@ptglab.com
W: ptglab.com

This product is exclusively available under Proteintech Group brand and is not available to purchase from any other manufacturer.

Selected Validation Data



Various lysates were subjected to SDS PAGE followed by western blot with 12448-1-AP (RPA1 antibody) at dilution of 1:1500 incubated at room temperature for 1.5 hours.