

For Research Use Only

# Sortilin Polyclonal antibody, PBS Only

Catalog Number: 12369-1-PBS

Featured Product



## Basic Information

**Catalog Number:**

12369-1-PBS

**Size:**

100ug, Concentration: 1 mg/ml by Nanodrop;

**Source:**

Rabbit

**Isotype:**

IgG

**Immunogen Catalog Number:**

AG2997

**GenBank Accession Number:**

BC023542

**GeneID (NCBI):**

6272

**ENSEMBL Gene ID:**

ENSG00000134243

**UNIPROT ID:**

Q99523

**Full Name:**

sortilin 1

**Calculated MW:**

831 aa, 92 kDa

**Observed MW:**

100-110 kDa

**Purification Method:**

Antigen affinity purification

## Applications

**Tested Applications:**

WB, IHC, IF/ICC, IF-P, FC (Intra), IP, Indirect ELISA

**Species Specificity:**

human, mouse, rat

## Background Information

Sortilin 1 (SORT1), is a trans-Golgi network (TGN) transmembrane protein and is a member of the Vps10p domain receptor family. SORT1 binds a number of unrelated ligands that participate in a wide range of cellular processes. It functions as a sorting receptor in the Golgi compartment and as a clearance receptor on the cell surface.

## Storage

**Storage:**

Store at -80°C.

**Storage Buffer:**

PBS Only

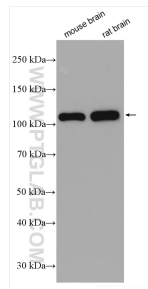
For technical support and original validation data for this product please contact:

T: 1 (888) 4PTGLAB (1-888-478-4522) (toll free in USA), or 1(312) 455-8498 (outside USA)

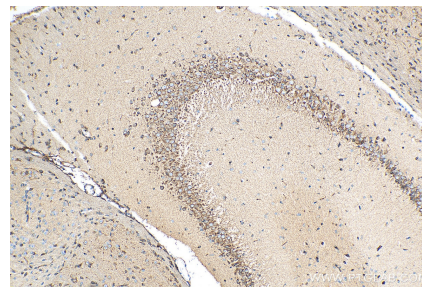
E: [proteintech@ptglab.com](mailto:proteintech@ptglab.com)  
W: [ptglab.com](http://ptglab.com)

This product is exclusively available under Proteintech Group brand and is not available to purchase from any other manufacturer.

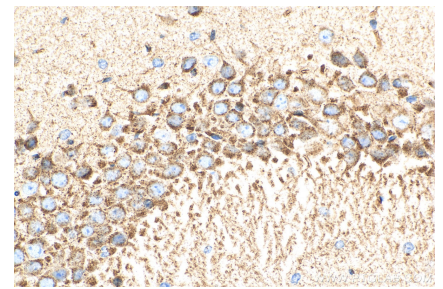
## Selected Validation Data



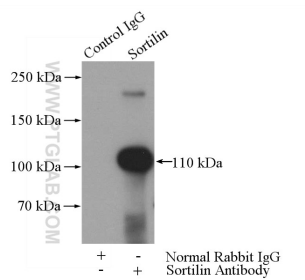
Various lysates were subjected to SDS PAGE followed by western blot with 12369-1-AP (Sortilin antibody) at dilution of 1:8000 incubated at room temperature for 1.5 hours. This data was developed using the same antibody clone with 12369-1-PBS in a different storage buffer formulation.



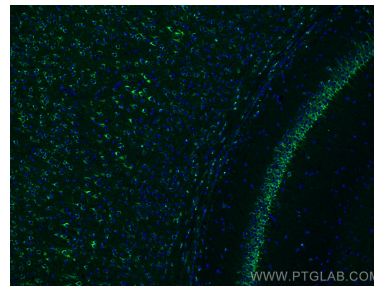
Immunohistochemical analysis of paraffin-embedded mouse brain tissue slide using 12369-1-AP (Sortilin antibody) at dilution of 1:1000 (under 10x lens). Heat mediated antigen retrieval with Tris-EDTA buffer (pH 9.0). This data was developed using the same antibody clone with 12369-1-PBS in a different storage buffer formulation.



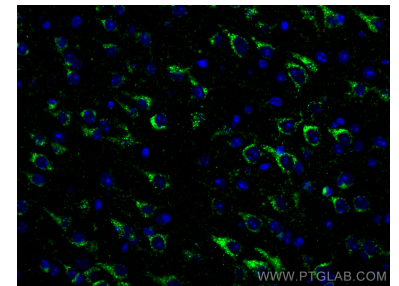
Immunohistochemical analysis of paraffin-embedded mouse brain tissue slide using 12369-1-AP (Sortilin antibody) at dilution of 1:1000 (under 40x lens). Heat mediated antigen retrieval with Tris-EDTA buffer (pH 9.0). This data was developed using the same antibody clone with 12369-1-PBS in a different storage buffer formulation.



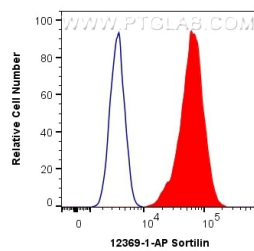
IP result of anti-Sortilin (IP:12369-1-AP, 4ug; Detection:12369-1-AP 1:500) with rat brain tissue lysate 4000ug. This data was developed using the same antibody clone with 12369-1-PBS in a different storage buffer formulation.



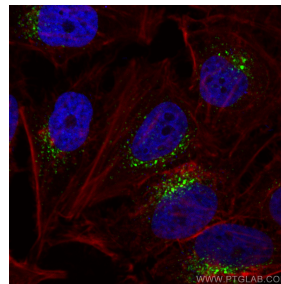
Immunofluorescent analysis of (4% PFA) fixed mouse brain tissue using Sortilin antibody (12369-1-AP) at dilution of 1:400 and CoralLite@488-Conjugated AffiniPure Goat Anti-Rabbit IgG(H+L). This data was developed using the same antibody clone with 12369-1-PBS in a different storage buffer formulation.



Immunofluorescent analysis of (4% PFA) fixed mouse brain tissue using Sortilin antibody (12369-1-AP) at dilution of 1:400 and CoralLite@488-Conjugated AffiniPure Goat Anti-Rabbit IgG(H+L). This data was developed using the same antibody clone with 12369-1-PBS in a different storage buffer formulation.



1X10<sup>6</sup> Neuro-2a cells were intracellularly stained with 0.4 ug Anti-Human Sortilin (12369-1-AP) and CoralLite@488-Conjugated AffiniPure Goat Anti-Rabbit IgG(H+L) at dilution 1:1000 (red), or 0.4 ug Isotype Control. Cells were fixed with 4% PFA and permeabilized with Flow Cytometry Perm Buffer (PF00011-C). This data was developed using the same antibody clone with 12369-1-PBS in a different storage buffer formulation.



Immunofluorescent analysis of (4% PFA) fixed HeLa cells using Sortilin antibody (12369-1-AP) at dilution of 1:800 and CoralLite@488-Conjugated AffiniPure Goat Anti-Rabbit IgG(H+L) (SA00013-2), CL594-Phalloidin (red). This data was developed using the same antibody clone with 12369-1-PBS in a different storage buffer formulation.