

For Research Use Only

REG4 Polyclonal antibody, PBS Only

Catalog Number: 12268-1-PBS



Basic Information

Catalog Number:

12268-1-PBS

Size:

100ug, Concentration: 1 mg/ml by Nanodrop;

Source:

Rabbit

Isotype:

IgG

Immunogen Catalog Number:

AG2934

GenBank Accession Number:

BC017089

GeneID (NCBI):

83998

UNIPROT ID:

Q9BYZ8

Full Name:

regenerating islet-derived family, member 4

Calculated MW:

158 aa, 18 kDa

Observed MW:

18 kDa

Purification Method:

Antigen affinity purification

Applications

Tested Applications:

WB, IHC, ELISA

Species Specificity:

human, mouse

Background Information

REG4 (Regenerating islet-derived protein 4) is a secreted C-type lectin that belongs to the regenerating gene (REG) family. Initially identified in a cDNA library from ulcerative colitis tissue, REG4 is predominantly expressed by intestinal enteroendocrine cells and is markedly up-regulated during gut inflammation and in various gastrointestinal cancers.

Storage

Storage:

Store at -80°C.

Storage Buffer:

PBS only, pH7.3

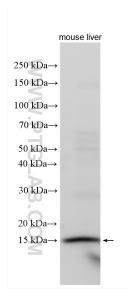
For technical support and original validation data for this product please contact:

T: 1 (888) 4PTGLAB (1-888-478-4522) (toll free in USA), or 1(312) 455-8498 (outside USA)

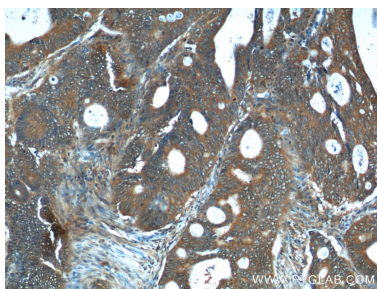
E: proteintech@ptglab.com
W: ptglab.com

This product is exclusively available under Proteintech Group brand and is not available to purchase from any other manufacturer.

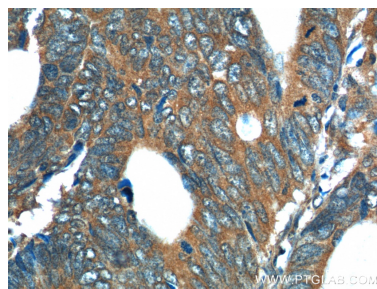
Selected Validation Data



mouse liver tissue were subjected to SDS PAGE followed by western blot with 12268-1-AP (REG4 antibody) at dilution of 1:1000 incubated at room temperature for 1.5 hours. This data was developed using the same antibody clone with 12268-1-PBS in a different storage buffer formulation.



Immunohistochemical analysis of paraffin-embedded human colon cancer tissue slide using 12268-1-AP (REG4 Antibody) at dilution of 1:200 (under 10x lens). This data was developed using the same antibody clone with 12268-1-PBS in a different storage buffer formulation.



Immunohistochemical analysis of paraffin-embedded human colon cancer tissue slide using 12268-1-AP (REG4 Antibody) at dilution of 1:200 (under 40x lens). This data was developed using the same antibody clone with 12268-1-PBS in a different storage buffer formulation.