

For Research Use Only

Claudin 11 Polyclonal antibody

Catalog Number: 12152-1-AP **4 Publications**



Basic Information

Catalog Number: 12152-1-AP	GenBank Accession Number: BC013577	Purification Method: Antigen affinity purification
Size: 150ul, Concentration: 600 µg/ml by Nanodrop and 273 µg/ml by Bradford method using BSA as the standard;	GeneID (NCBI): 5010	Recommended Dilutions: WB 1:500-1:1000 IHC 1:20-1:200 IF/ICC 1:20-1:200
Source: Rabbit	UNIPROT ID: O75508	
Isotype: IgG	Full Name: claudin 11	
Immunogen Catalog Number: AG2764	Calculated MW: 207 aa, 22 kDa	
	Observed MW: 22 kDa	

Applications

Tested Applications: WB, IF, IHC, ELISA	Positive Controls: WB : human testis tissue, IHC : human testis tissue, mouse brain tissue IF/ICC : HepG2 cells,
Cited Applications: WB, IF	
Species Specificity: human, mouse	
Cited Species: human, rat	
Note-IHC: suggested antigen retrieval with TE buffer pH 9.0; (*) Alternatively, antigen retrieval may be performed with citrate buffer pH 6.0	

Background Information

Claudins are a family of proteins that are the most important components of the tight junctions, where they establish the paracellular barrier that controls the flow of molecules in the intercellular space between the cells of an epithelium. 23 claudins have been identified. They are small (20-27 kilodalton (kDa)) proteins with very similar structure. They have four transmembrane domains, with the N-terminus and the C-terminus in the cytoplasm.

Notable Publications

Author	Pubmed ID	Journal	Application
Zhaoxing Li	30651572	Sci Rep	WB
Raimund Dietze	25666991	Mol Cell Endocrinol	IF
Liping Wang	35984620	J Physiol Biochem	WB

Storage

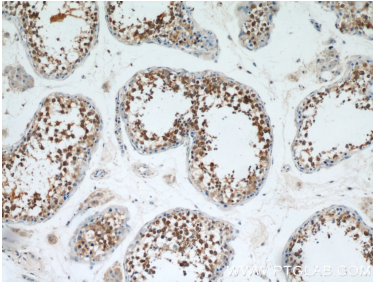
Storage:
Store at -20°C. Stable for one year after shipment.
Storage Buffer:
PBS with 0.02% sodium azide and 50% glycerol pH 7.3.
Aliquoting is unnecessary for -20°C storage

*** 20ul sizes contain 0.1% BSA

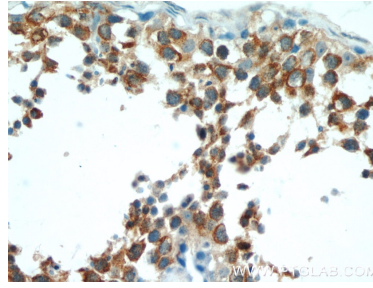
For technical support and original validation data for this product please contact:
T: 1 (888) 4PTGLAB (1-888-478-4522) (toll free in USA), or 1(312) 455-8498 (outside USA)
E: proteintech@ptglab.com
W: ptglab.com

This product is exclusively available under Proteintech Group brand and is not available to purchase from any other manufacturer.

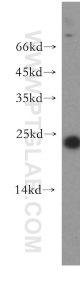
Selected Validation Data



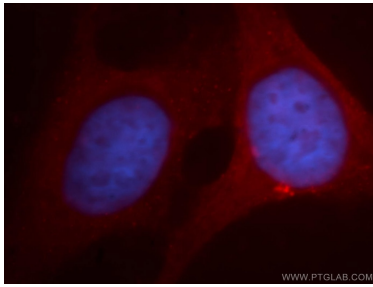
Immunohistochemical analysis of paraffin-embedded human testis using 12152-1-AP (Claudin 11 antibody) at dilution of 1:50 (under 10x lens).



Immunohistochemical analysis of paraffin-embedded human testis using 12152-1-AP (Claudin 11 antibody) at dilution of 1:50 (under 40x lens).



human testis tissue were subjected to SDS PAGE followed by western blot with 12152-1-AP (Claudin 11 antibody) at dilution of 1:500 incubated at room temperature for 1.5 hours.



Immunofluorescent analysis of HepG2 cells, using CLDN11 antibody 12152-1-AP at 1:100 dilution and PE-labeled goat anti-rabbit IgG(red). Blue pseudocolor = DAPI (fluorescent DNA dye).