

For Research Use Only

# PTS Polyclonal antibody, PBS Only

Catalog Number: 12150-1-PBS

Featured Product



## Basic Information

Catalog Number:

12150-1-PBS

Size:

100ug, Concentration: 1 mg/ml by  
Nanodrop;

Source:

Rabbit

Isotype:

IgG

Immunogen Catalog Number:

AG2798

GenBank Accession Number:

BC009686

GeneID (NCBI):

5805

UNIPROT ID:

Q03393

Full Name:

6-pyruvoyltetrahydropterin synthase

Calculated MW:

145 aa, 16 kDa

Observed MW:

16 kDa

Purification Method:

Antigen affinity purification

## Applications

Tested Applications:

WB, IHC, IF/ICC, Indirect ELISA

Species Specificity:

human, mouse, rat

## Storage

Storage:

Store at -80°C.

Storage Buffer:

PBS Only

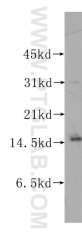
For technical support and original validation data for this product please contact:

T: 1 (888) 4PTGLAB (1-888-478-4522) (toll free  
in USA), or 1(312) 455-8498 (outside USA)

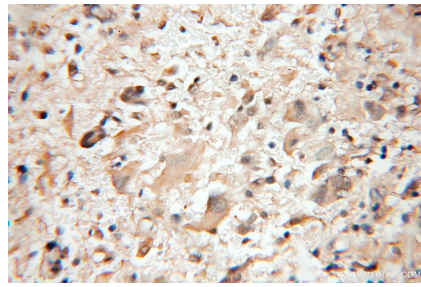
E: [proteintech@ptglab.com](mailto:proteintech@ptglab.com)  
W: [ptglab.com](http://ptglab.com)

This product is exclusively available under Proteintech Group brand and is not available to purchase from any other manufacturer.

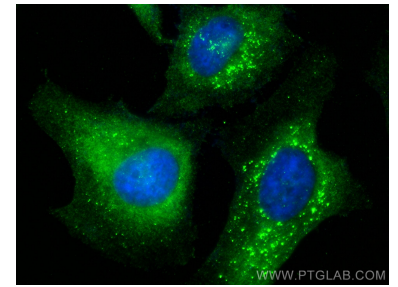
## Selected Validation Data



human brain tissue were subjected to SDS PAGE followed by western blot with 12150-1-AP (PTS antibody) at dilution of 1:200 incubated at room temperature for 1.5 hours. This data was developed using the same antibody clone with 12150-1-PBS in a different storage buffer formulation.



Immunohistochemical analysis of paraffin-embedded human gliomas using 12150-1-AP (PTS antibody) at dilution of 1:50 (under 10x lens). This data was developed using the same antibody clone with 12150-1-PBS in a different storage buffer formulation.



Immunofluorescent analysis of (-20°C Ethanol) fixed HeLa cells using PTS antibody (12150-1-AP) at dilution of 1:400 and CoraLite®488-Conjugated Goat Anti-Rabbit IgG(H+L) (SA00013-2). This data was developed using the same antibody clone with 12150-1-PBS in a different storage buffer formulation.