

For Research Use Only

TMEFF2 Polyclonal antibody

Catalog Number: 11928-1-AP

2 Publications



Basic Information

Catalog Number: 11928-1-AP	GenBank Accession Number: BC008973	Purification Method: Antigen affinity purification
Size: 150ul , Concentration: 350 µg/ml by Nanodrop and 320 µg/ml by Bradford method using BSA as the standard;	GeneID (NCBI): 23671	Recommended Dilutions: WB 1:500-1:1000
Source: Rabbit	Full Name: transmembrane protein with EGF-like and two follistatin-like domains 2	
Isotype: IgG	Calculated MW: 374 aa, 41 kDa	
Immunogen Catalog Number: AG2609	Observed MW: 41 kDa	

Applications

Tested Applications: WB, ELISA	Positive Controls: WB : SH-SY5Y cells, HeLa cells, human brain tissue, PC-3 cells
Cited Applications: IHC, WB	
Species Specificity: human	
Cited Species: human	

Background Information

Notable Publications

Author	Pubmed ID	Journal	Application
Sidi Xie	33663520	Cancer Cell Int	IHC
Condomines Maud M	19542363	J Immunol	WB

Storage

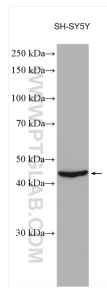
Storage:
Store at -20°C. Stable for one year after shipment.
Storage Buffer:
PBS with 0.02% sodium azide and 50% glycerol pH 7.3.
Aliquoting is unnecessary for -20°C storage

*** 20ul sizes contain 0.1% BSA

For technical support and original validation data for this product please contact:
T: 1 (888) 4PTGLAB (1-888-478-4522) (toll free in USA), or 1(312) 455-8498 (outside USA)
E: proteintech@ptglab.com
W: ptglab.com

This product is exclusively available under Proteintech Group brand and is not available to purchase from any other manufacturer.

Selected Validation Data



SH-SY5Y cells were subjected to SDS PAGE followed by western blot with 11928-1-AP (TMEFF2 antibody) at dilution of 1:600 incubated at room temperature for 1.5 hours.