

For Research Use Only

RFC3 Polyclonal antibody

Catalog Number: 11814-1-AP

Featured Product

5 Publications



Basic Information

Catalog Number:

11814-1-AP

Size:

150ul, Concentration: 260 ug/ml by Nanodrop and 233 ug/ml by Bradford method using BSA as the standard;

Source:

Rabbit

Isotype:

IgG

Immunogen Catalog Number:

AG2269

GenBank Accession Number:

BC000149

GeneID (NCBI):

5983

UNIPROT ID:

P40938

Full Name:

replication factor C (activator 1) 3, 38kDa

Calculated MW:

40 aa, 6 kDa

Observed MW:

38 kDa

Purification Method:

Antigen affinity purification

Recommended Dilutions:

WB: 1:500-1:3000

IP: 0.5-4.0 ug for 1.0-3.0 mg of total protein lysate

IF/ICC: 1:200-1:800

Applications

Tested Applications:

WB, IF/ICC, IP, ELISA

Cited Applications:

WB, ColP

Species Specificity:

human, mouse, rat

Cited Species:

human, mouse

Positive Controls:

WB: human liver tissue, HeLa cells, human heart tissue

IP: HeLa cells,

IF/ICC: U2OS cells,

Background Information

RFC3, also known as RFC38, is a 356 amino acid protein, which localizes in nucleus. Replication factor C (RFC) is a component of the eukaryotic DNA polymerase. In all eukaryotic cell cycles, it is essential for DNA duplication, DNA injury repair and checkpoint control. RFC consists of five subunits (RFC1-5). The interrelationships between RFC2, RFC3 and the c-MYC oncogene (transcription factor) can induce cell division and proliferation. RFC3 is associated with liver, breast, esophageal and ovarian cancer, and serves a critical role in cellular proliferation, invasion and metastasis. RFC3 exists two isoforms with molecular weight of 34 kDa and 38-40 kDa.

Notable Publications

Author	Pubmed ID	Journal	Application
Jianguo Yang	33691114	Cell Rep	WB
Kai Ren	34930359	Virol J	WB
Wei Wang	38682160	Acta Biochim Biophys Sin (Shanghai)	WB

Storage

Storage:

Store at -20°C. Stable for one year after shipment.

Storage Buffer:

PBS with 0.02% sodium azide and 50% glycerol, pH7.3

Aliquoting is unnecessary for -20°C storage

*** 20ul sizes contain 0.1% BSA

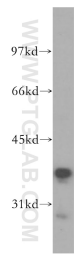
For technical support and original validation data for this product please contact:

T: 1 (888) 4PTGLAB (1-888-478-4522) (toll free in USA), or 1(312) 455-8498 (outside USA)

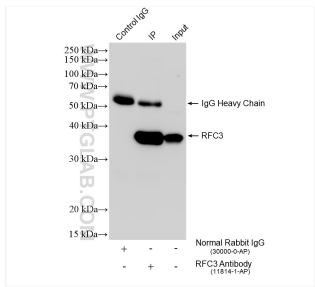
E: proteintech@ptglab.com
W: ptglab.com

This product is exclusively available under Proteintech Group brand and is not available to purchase from any other manufacturer.

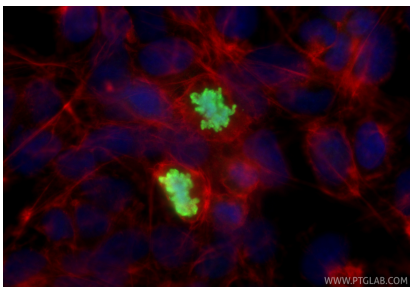
Selected Validation Data



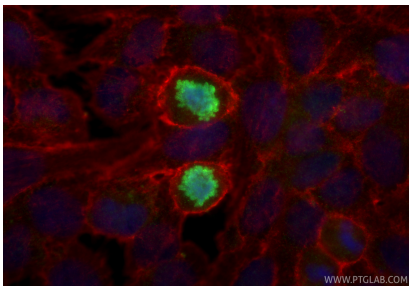
human liver tissue were subjected to SDS PAGE followed by western blot with 11814-1-AP (RFC3 antibody) at dilution of 1:500 incubated at room temperature for 1.5 hours.



IP result of anti-RFC3 (IP:11814-1-AP, 4 ug; Detection:11814-1-AP 1:600) with HeLa cells lysate 1200 ug.



Immunofluorescent analysis of (4% PFA) fixed U2OS cells using RFC3 antibody (11814-1-AP) at dilution of 1:400 and CoraLite®488-Conjugated Goat Anti-Rabbit IgG(H+L) (SA00013-2), CL594-Phalloidin (red).



Immunofluorescent analysis of (4% PFA) fixed U2OS cells using RFC3 antibody (11814-1-AP) at dilution of 1:200 and CoraLite®488-Conjugated Goat Anti-Rabbit IgG(H+L) (SA00013-2), Beta Actin antibody (66009-1-Ig, Clone: 2D4H5, red).