

For Research Use Only

CLPS Polyclonal antibody, PBS Only

Catalog Number:11766-1-PBS



Basic Information

Catalog Number:

11766-1-PBS

Size:

100ug , Concentration: 1 mg/ml by Nanodrop;

Source:

Rabbit

Isotype:

IgG

Immunogen Catalog Number:

AG2321

GenBank Accession Number:

BC017897

GeneID (NCBI):

1208

UNIPROT ID:

P04118

Full Name:

colipase, pancreatic

Calculated MW:

12 kDa

Observed MW:

12 kDa

Purification Method:

Antigen affinity purification

Applications

Tested Applications:

WB, IHC, IF-P, Indirect ELISA

Species Specificity:

human, mouse, rat

Background Information

Pancreatic colipase is a 12-kDa polypeptide cofactor for pancreatic lipase (EC 3.1.1.3), an enzyme essential for the absorption of dietary long-chain triglyceride fatty acids. Colipase is thought to anchor lipase noncovalently to the surface of lipid micelles, counteracting the destabilizing influence of intestinal bile salts.

Storage

Storage:

Store at -80°C.

Storage Buffer:

PBS Only

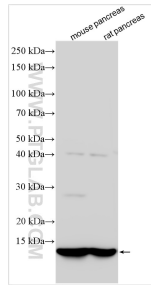
For technical support and original validation data for this product please contact:

T: 1 (888) 4PTGLAB (1-888-478-4522) (toll free in USA), or 1(312) 455-8498 (outside USA)

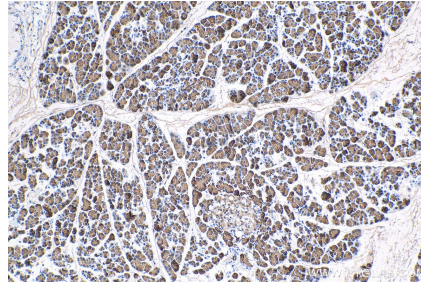
E: proteintech@ptglab.com
W: ptglab.com

This product is exclusively available under Proteintech Group brand and is not available to purchase from any other manufacturer.

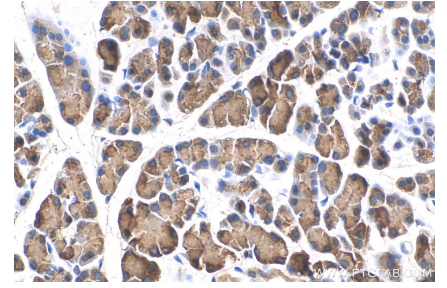
Selected Validation Data



Various lysates were subjected to SDS PAGE followed by western blot with 11766-1-AP (CLPS antibody) at dilution of 1:2000 incubated at room temperature for 1.5 hours. This data was developed using the same antibody clone with 11766-1-PBS in a different storage buffer formulation.



Immunohistochemical analysis of paraffin-embedded rat pancreas tissue slide using 11766-1-AP (CLPS antibody) at dilution of 1:400 (under 10x lens). Heat mediated antigen retrieval with Tris-EDTA buffer (pH 9.0). This data was developed using the same antibody clone with 11766-1-PBS in a different storage buffer formulation.



Immunohistochemical analysis of paraffin-embedded rat pancreas tissue slide using 11766-1-AP (CLPS antibody) at dilution of 1:400 (under 40x lens). Heat mediated antigen retrieval with Tris-EDTA buffer (pH 9.0). This data was developed using the same antibody clone with 11766-1-PBS in a different storage buffer formulation.



Immunofluorescent analysis of (4% PFA) fixed paraffin-embedded mouse pancreas tissue using CLPS antibody (11766-1-AP) at dilution of 1:400 and CoraLite®594-Conjugated Goat Anti-Rabbit IgG(H+L) (SA00013-4). Heat mediated antigen retrieval with Tris-EDTA buffer (pH 9.0). This data was developed using the same antibody clone with 11766-1-PBS in a different storage buffer formulation.