

Profilin 1 Polyclonal antibody

Catalog Number: 11680-1-AP

Featured Product

10 Publications

Basic Information

Catalog Number:

11680-1-AP

Size:

150ul, Concentration: 500 µg/ml by Nanodrop and 373 µg/ml by Bradford method using BSA as the standard;

Source:

Rabbit

Isotype:

IgG

Immunogen Catalog Number:

AG2286

GenBank Accession Number:

BC006768

GeneID (NCBI):

5216

Full Name:

profilin 1

Calculated MW:

140 aa, 15 kDa

Observed MW:

15 kDa

Purification Method:

Antigen affinity purification

Recommended Dilutions:

WB 1:1000-1:4000

IHC 1:20-1:200

Applications

Tested Applications:

IHC, WB, ELISA

Cited Applications:

IF, IHC, IP, WB

Species Specificity:

human, mouse, rat

Cited Species:

human, rat, mouse

Note-IHC: suggested antigen retrieval with TE buffer pH 9.0; (*) Alternatively, antigen retrieval may be performed with citrate buffer pH 6.0

Positive Controls:

WB : HeLa cells, NIH/3T3 cells, HAP1, Jurkat cells

IHC : human colon cancer tissue,

Background Information

Profilin-1 (PFN1) plays an important role in the control of actin dynamics, and could represent an important therapeutic target in several diseases. PFN1 is identified as a huntingtin aggregation inhibitor, and may serve as a tumor-suppressor. PFN1 is crucial for the conversion of monomeric (G)-actin to filamentous (F)-actin. Amyotrophic lateral sclerosis (ALS) is a late-onset neurodegenerative disorder resulting from motor neuron death. Cells expressing PFN1 mutants contain ubiquitinated, insoluble aggregates that in many cases contain the ALS-associated protein TDP-43. Recently, PFN1 is a potential biomarker for bladder cancer aggressiveness and may be of great clinical importance.

Notable Publications

Author	Pubmed ID	Journal	Application
Bo Ma	30235220	PLoS One	WB
Yu Lian	30326930	J Exp Clin Cancer Res	WB
Dayun Yang	24818882	Biomaterials	WB

Storage

Storage:

Store at -20°C. Stable for one year after shipment.

Storage Buffer:

PBS with 0.02% sodium azide and 50% glycerol pH 7.3.

Aliquoting is unnecessary for -20°C storage

*** 20ul sizes contain 0.1% BSA

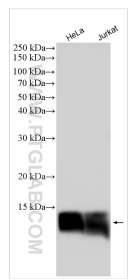
For technical support and original validation data for this product please contact:

T: 1 (888) 4PTGLAB (1-888-478-4522) (toll free in USA), or 1(312) 455-8498 (outside USA)

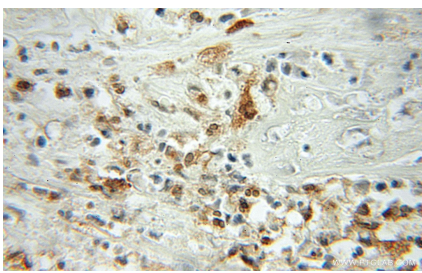
E: proteintech@ptglab.com
W: ptglab.com

This product is exclusively available under Proteintech Group brand and is not available to purchase from any other manufacturer.

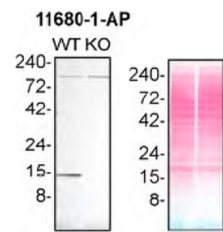
Selected Validation Data



Various lysates were subjected to SDS PAGE followed by western blot with 11680-1-AP (Profilin 1 antibody) at dilution of 1:2000 incubated at room temperature for 1.5 hours.



Immunohistochemical analysis of paraffin-embedded human colon cancer using 11680-1-AP (Profilin 1 antibody) at dilution of 1:50 (under 10x lens).



HAP1 (WT and PFN1 KO) lysates prepared with NP-40 buffer, 50 µg protein loaded. 11680-1-AP incubated at 1:6000 at 4°C overnight in 5% milk in TBST. Ponceau stained transfers shown on right. Data provided by YCharOS, an open science company with a mission to validate commercial antibodies to improve scientific reproducibility and transparency.