

For Research Use Only

# APH1A Polyclonal antibody, PBS Only

Catalog Number: 11643-1-PBS



## Basic Information

**Catalog Number:**

11643-1-PBS

**Size:**

100ug , Concentration: 1 mg/ml by Nanodrop;

**Source:**

Rabbit

**Isotype:**

IgG

**Immunogen Catalog Number:**

AG2238

**GenBank Accession Number:**

BC015568

**GeneID (NCBI):**

51107

**UNIPROT ID:**

Q96BI3

**Full Name:**

anterior pharynx defective 1 homolog A (C. elegans)

**Calculated MW:**

265 aa, 29 kDa

**Observed MW:**

27-32 kDa

**Purification Method:**

Antigen affinity purification

## Applications

**Tested Applications:**

WB, IHC, IF/ICC, IP, Indirect ELISA

**Species Specificity:**

human

## Storage

**Storage:**

Store at -80°C.

**Storage Buffer:**

PBS Only

For technical support and original validation data for this product please contact:

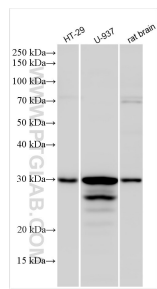
T: 1 (888) 4PTGLAB (1-888-478-4522) (toll free in USA), or 1(312) 455-8498 (outside USA)

E: [proteintech@ptglab.com](mailto:proteintech@ptglab.com)

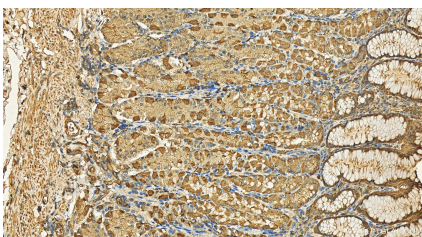
W: [ptglab.com](http://ptglab.com)

This product is exclusively available under Proteintech Group brand and is not available to purchase from any other manufacturer.

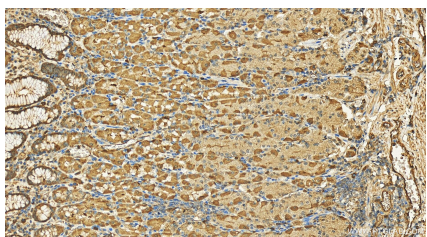
Selected Validation Data



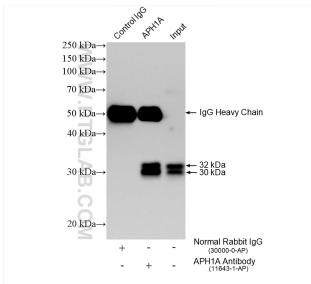
Various lysates were subjected to SDS PAGE followed by western blot with 11643-1-AP (APH1A antibody) at dilution of 1:8000 incubated at room temperature for 1.5 hours. This data was developed using the same antibody clone with 11643-1-PBS in a different storage buffer formulation.



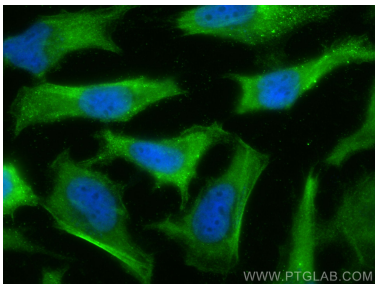
Immunohistochemical analysis of paraffin-embedded human stomach tissue slide using 11643-1-AP (APH1A antibody) at dilution of 1:200 (under 20x lens). Heat mediated antigen retrieval with Tris-EDTA buffer (pH 9.0). This data was developed using the same antibody clone with 11643-1-PBS in a different storage buffer formulation.



Immunohistochemical analysis of paraffin-embedded human stomach tissue slide using 11643-1-AP (APH1A antibody) at dilution of 1:200 (under 20x lens). Heat mediated antigen retrieval with Tris-EDTA buffer (pH 9.0). This data was developed using the same antibody clone with 11643-1-PBS in a different storage buffer formulation.



IP result of anti-APH1A (IP:11643-1-AP, 4ug; Detection:11643-1-AP 1:4000) with HeLa cells lysate 1600 ug. This data was developed using the same antibody clone with 11643-1-PBS in a different storage buffer formulation.



Immunofluorescent analysis of (-20°C Ethanol) fixed HeLa cells using APH1A antibody (11643-1-AP) at dilution of 1:400 and CoraLite®488-Conjugated AffiniPure Goat Anti-Rabbit IgG(H+L) (SA00013-2). This data was developed using the same antibody clone with 11643-1-PBS in a different storage buffer formulation.