

For Research Use Only

MEIS2 Polyclonal antibody

Catalog Number: 11550-1-AP **2 Publications**



Basic Information

Catalog Number: 11550-1-AP	GenBank Accession Number: BC001516	Purification Method: Antigen affinity purification
Size: 150ul , Concentration: 300 ug/ml by Nanodrop;	GeneID (NCBI): 4212	Recommended Dilutions: WB 1:1000-1:4000 IHC 1:400-1:1600
Source: Rabbit	UNIPROT ID: O14770	
Isotype: IgG	Full Name: Meis homeobox 2	
Immunogen Catalog Number: AG2096	Calculated MW: 381 aa, 42 kDa	
	Observed MW: 56 kDa	

Applications

Tested Applications: WB, IHC, ELISA	Positive Controls: WB : Jurkat cells, PC-3 cells, A549 cells, LNCaP cells, HCT 116 cells IHC : human prostate cancer tissue,
Cited Applications: WB, IHC	
Species Specificity: human, mouse, rat	
Cited Species: mouse	

Note-IHC: suggested antigen retrieval with TE buffer pH 9.0; (*) Alternatively, antigen retrieval may be performed with citrate buffer pH 6.0

Background Information

MEIS2, also named as Meis1-related protein 1 or MRG1, is a 477 amino acid protein, which contains one homeobox DNA-binding domain and belongs to the TALE/MEIS homeobox family. MEIS2 is expressed in various tissues and at high level in the lymphoid organs of hematopoietic tissues. MEIS2 localizes in the nucleus and is involved in transcriptional regulation. MEIS2 is a critical downstream effector within an essential homeoprotein network that serving a rate-limiting regulatory role in MLL leukemogenesis. MEIS2 as midbrain specific marker is upregulated concomitantly with the morphological transformation of hindbrain to midbrain.

Notable Publications

Author	Pubmed ID	Journal	Application
Yuting Cui	38994634	Aging Cell	WB
Russell Meaghan K MK	22315423	Proc Natl Acad Sci U S A	IHC

Storage

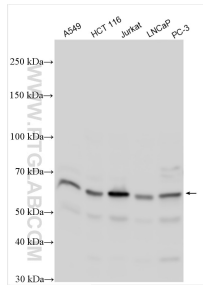
Storage:
Store at -20°C. Stable for one year after shipment.
Storage Buffer:
PBS with 0.02% sodium azide and 50% glycerol pH 7.3.
Aliquoting is unnecessary for -20°C storage

*** 20ul sizes contain 0.1% BSA

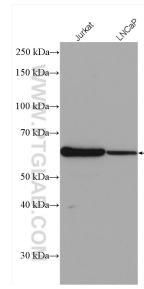
For technical support and original validation data for this product please contact:
T: 1 (888) 4PTGLAB (1-888-478-4522) (toll free in USA), or 1(312) 455-8498 (outside USA)
E: proteintech@ptglab.com
W: ptglab.com

This product is exclusively available under Proteintech Group brand and is not available to purchase from any other manufacturer.

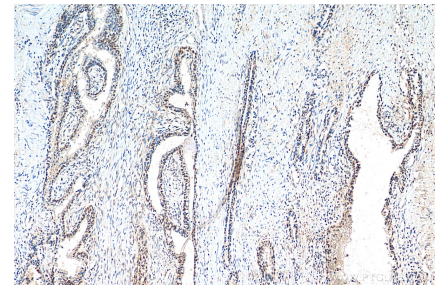
Selected Validation Data



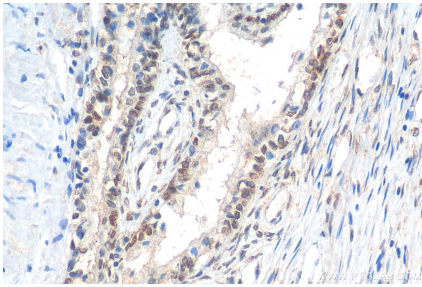
Various lysates were subjected to SDS PAGE followed by western blot with 11550-1-AP (MEIS2 antibody) at dilution of 1:1000 incubated at room temperature for 1.5 hours.



Various lysates were subjected to SDS PAGE followed by western blot with 11550-1-AP (MEIS2 antibody) at dilution of 1:2000 incubated at room temperature for 1.5 hours.



Immunohistochemical analysis of paraffin-embedded human prostate cancer tissue slide using 11550-1-AP (MEIS2 antibody) at dilution of 1:800 (under 10x lens). Heat mediated antigen retrieval with Tris-EDTA buffer (pH 9.0).



Immunohistochemical analysis of paraffin-embedded human prostate cancer tissue slide using 11550-1-AP (MEIS2 antibody) at dilution of 1:800 (under 40x lens). Heat mediated antigen retrieval with Tris-EDTA buffer (pH 9.0).