

For Research Use Only

COX4I2 Polyclonal antibody, PBS Only

Catalog Number: 11463-1-PBS

Featured Product



Basic Information

Catalog Number:

11463-1-PBS

Size:

100ug, Concentration: 1 mg/ml by Nanodrop;

Source:

Rabbit

Isotype:

IgG

Immunogen Catalog Number:

AG1987

GenBank Accession Number:

BC057779

GeneID (NCBI):

84701

UNIPROT ID:

Q96KJ9

Full Name:

cytochrome c oxidase subunit IV isoform 2 (lung)

Calculated MW:

171 aa, 20 kDa

Observed MW:

17-18 kDa

Purification Method:

Antigen affinity purification

Applications

Tested Applications:

WB, IHC, IF/ICC, IP, Indirect ELISA

Species Specificity:

human, mouse, rat

Background Information

COX4I2, also named as COX4L2 and COXIV-2, belongs to the cytochrome c oxidase IV family. It is one of the nuclear-coded polypeptide chains of cytochrome c oxidase, the terminal oxidase in mitochondrial electron transport. COXIV (cytochrome c oxidase IV) has two isoforms (isoform 1 and 2). Isoform 1 (COX4I1) is ubiquitously expressed and isoform 2 is highly expressed in lung tissues. This antibody was generated against full length COX4I2 protein.

Storage

Storage:

Store at -80°C.

Storage Buffer:

PBS Only

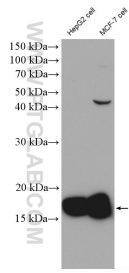
For technical support and original validation data for this product please contact:

T: 1 (888) 4PTGLAB (1-888-478-4522) (toll free in USA), or 1(312) 455-8498 (outside USA)

E: proteintech@ptglab.com
W: ptglab.com

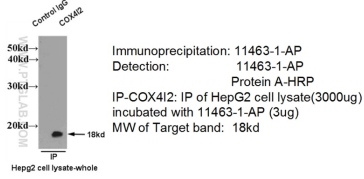
This product is exclusively available under Proteintech Group brand and is not available to purchase from any other manufacturer.

Selected Validation Data

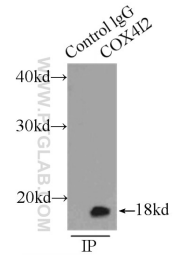


Various lysates were subjected to SDS PAGE followed by western blot with 11463-1-AP (COX4l2 antibody) at dilution of 1:1500 incubated at 4 degree celsius over night. This data was developed using the same antibody clone with 11463-1-PBS in a different storage buffer formulation.

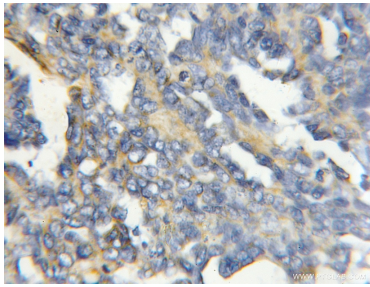
IP of 11463-1-AP with HepG2 cell



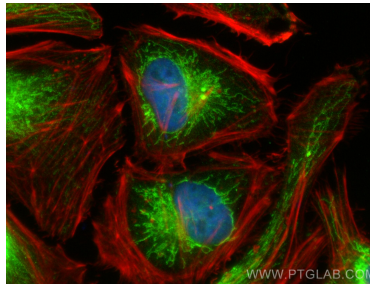
IP result of anti-COX4l2 (11463-1-AP for IP and Detection) with HepG2 cell lysate. This data was developed using the same antibody clone with 11463-1-PBS in a different storage buffer formulation.



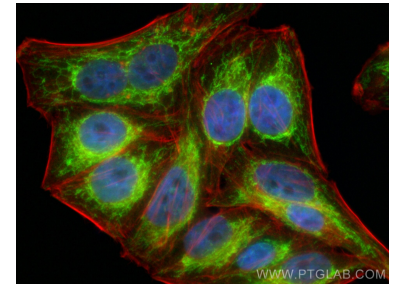
IP result of anti-COX4l2 (IP:11463-1-AP, 3ug; Detection:11463-1-AP 1:1000) with HepG2 cells lysate 8000ug. This data was developed using the same antibody clone with 11463-1-PBS in a different storage buffer formulation.



Immunohistochemical analysis of paraffin-embedded human ovary tumor using 11463-1-AP (COX4l2 antibody) at dilution of 1:50 (under 10x lens). This data was developed using the same antibody clone with 11463-1-PBS in a different storage buffer formulation.



Immunofluorescent analysis of (4% PFA) fixed HeLa cells using COX4l2 antibody (11463-1-AP) at dilution of 1:400 and CoraLite@488-Conjugated Goat Anti-Rabbit IgG(H+L) (SA00013-2), CL594-phalloidin (red). This data was developed using the same antibody clone with 11463-1-PBS in a different storage buffer formulation.



Immunofluorescent analysis of (4% PFA) fixed HepG2 cells using COX4l2 antibody (11463-1-AP) at dilution of 1:400 and CoraLite@488-Conjugated Goat Anti-Rabbit IgG(H+L) (SA00013-2), CL594-phalloidin (red). This data was developed using the same antibody clone with 11463-1-PBS in a different storage buffer formulation.