

For Research Use Only

COX6A1 Polyclonal antibody

Catalog Number: 11460-1-AP

Featured Product

14 Publications



Basic Information

Catalog Number:

11460-1-AP

Size:

150ul, Concentration: 350 ug/ml by Nanodrop and 293 ug/ml by Bradford method using BSA as the standard;

Source:

Rabbit

Isotype:

IgG

Immunogen Catalog Number:

AG2006

GenBank Accession Number:

BC007723

GeneID (NCBI):

1337

UNIPROT ID:

P12074

Full Name:

cytochrome c oxidase subunit VIa polypeptide 1

Calculated MW:

85 aa, 9 kDa

Observed MW:

9.5 kDa

Purification Method:

Antigen affinity purification

Recommended Dilutions:

WB 1:2000-1:12000

IHC 1:50-1:500

IF/ICC 1:50-1:500

Applications

Tested Applications:

WB, IHC, IF/ICC, ELISA

Cited Applications:

WB, IF

Species Specificity:

human, mouse, rat

Cited Species:

human, mouse, rat, pig

Note-IHC: suggested antigen retrieval with TE buffer pH 9.0; (*) Alternatively, antigen retrieval may be performed with citrate buffer pH 6.0

Positive Controls:

WB: mouse liver tissue, NIH/3T3 cells, rat liver tissue

IHC: human pancreas cancer tissue,

IF/ICC: MCF-7 cells, SH-SY5Y cells

Background Information

COX6A1(Cytochrome c oxidase subunit 6A1, mitochondrial) is also named as COX6AL and belongs to the cytochrome c oxidase subunit 6A family. This protein is one of the nuclear-coded polypeptide chains of cytochrome c oxidase, the terminal oxidase in mitochondrial electron transport.

Notable Publications

Author	Pubmed ID	Journal	Application
Weicheng Wu	30237463	Cell Death Dis	WB
Yilin Kang	31682224	Elife	WB
Nicole M Sayles	35263592	Cell Rep	WB

Storage

Storage:

Store at -20°C. Stable for one year after shipment.

Storage Buffer:

PBS with 0.02% sodium azide and 50% glycerol pH 7.3.

Aliquoting is unnecessary for -20°C storage

*** 20ul sizes contain 0.1% BSA

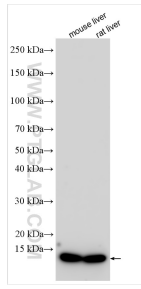
For technical support and original validation data for this product please contact:

T: 1 (888) 4PTGLAB (1-888-478-4522) (toll free in USA), or 1(312) 455-8498 (outside USA)

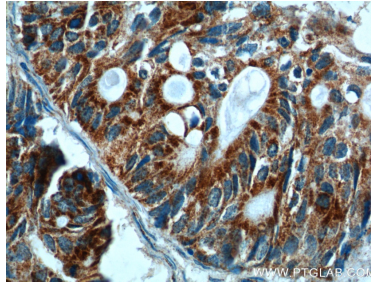
E: proteintech@ptglab.com
W: ptglab.com

This product is exclusively available under Proteintech Group brand and is not available to purchase from any other manufacturer.

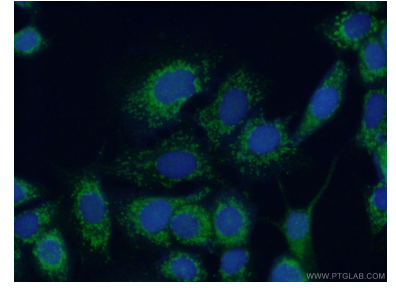
Selected Validation Data



Various lysates were subjected to SDS PAGE followed by western blot with 11460-1-AP (COX6A1 antibody) at dilution of 1:6000 incubated at room temperature for 1.5 hours.



Immunohistochemical analysis of paraffin-embedded human pancreas cancer tissue slide using 11460-1-AP (COX6A1 Antibody) at dilution of 1:200 (under 40x lens).



Immunofluorescent analysis of (10% Formaldehyde) fixed MCF-7 cells using 11460-1-AP (COX6A1 antibody) at dilution of 1:50 and Alexa Fluor 488-conjugated AffiniPure Goat Anti-Rabbit IgG(H+L).