

For Research Use Only

ECH1 Polyclonal antibody

Catalog Number: 11385-1-AP

5 Publications



Basic Information

Catalog Number: 11385-1-AP	GenBank Accession Number: BC017408	Purification Method: Antigen affinity purification
Size: 150ul , Concentration: 400 µg/ml by Nanodrop and 253 µg/ml by Bradford method using BSA as the standard;	GeneID (NCBI): 1891	Recommended Dilutions: WB 1:500-1:2000 IHC 1:20-1:200 IF 1:10-1:100
Source: Rabbit	Full Name: enoyl Coenzyme A hydratase 1, peroxisomal	
Isotype: IgG	Calculated MW: 328 aa, 36 kDa	
Immunogen Catalog Number: AG1931	Observed MW: 30-36 kDa	

Applications

Tested Applications: IF, IHC, WB, ELISA	Positive Controls:
Cited Applications: WB	WB : mouse liver tissue, HepG2 cells, Jurkat cells, K-562 cells, L02 cells, mouse heart tissue
Species Specificity: human, mouse, rat	IHC : human pancreas cancer tissue,
Cited Species: mouse	IF : HepG2 cells,
Note-IHC: suggested antigen retrieval with TE buffer pH 9.0; (*) Alternatively, antigen retrieval may be performed with citrate buffer pH 6.0	

Background Information

Notable Publications

Author	Pubmed ID	Journal	Application
Miguel A Lanaspá	29533924	J Clin Invest	WB
Yanlu Wang	35300421	Front Cell Dev Biol	WB
Ishimoto Takuji T	23813872	Hepatology	WB

Storage

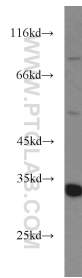
Storage:
Store at -20°C. Stable for one year after shipment.
Storage Buffer:
PBS with 0.02% sodium azide and 50% glycerol pH 7.3.
Aliquoting is unnecessary for -20°C storage

*** 20ul sizes contain 0.1% BSA

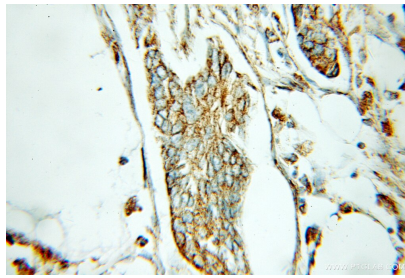
For technical support and original validation data for this product please contact:
T: 1 (888) 4PTGLAB (1-888-478-4522) (toll free in USA), or 1(312) 455-8498 (outside USA)
E: proteintech@ptglab.com
W: ptglab.com

This product is exclusively available under Proteintech Group brand and is not available to purchase from any other manufacturer.

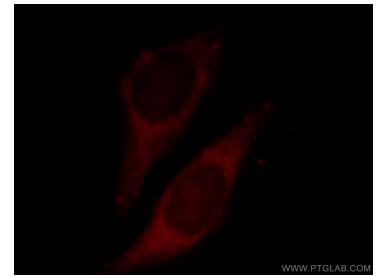
Selected Validation Data



mouse liver tissue were subjected to SDS PAGE followed by western blot with 11385-1-AP (ECH1 antibody) at dilution of 1:500 incubated at room temperature for 1.5 hours.



Immunohistochemical analysis of paraffin-embedded human pancreas cancer using 11385-1-AP (ECH1 antibody) at dilution of 1:100 (under 10x lens).



Immunofluorescent analysis of HepG2 cells, using ECH1 antibody 11385-1-AP at 1:25 dilution and Rhodamine-labeled goat anti-rabbit IgG (red).