

For Research Use Only

DHX58/LGP2 Polyclonal antibody

Catalog Number: 11355-1-AP

Featured Product

16 Publications



Basic Information

Catalog Number:

11355-1-AP

Size:

150ul, Concentration: 450 ug/ml by Nanodrop;

Source:

Rabbit

Isotype:

IgG

Immunogen Catalog Number:

AG1910

GenBank Accession Number:

BC014949

GeneID (NCBI):

79132

UNIPROT ID:

Q96C10

Full Name:

DEXH (Asp-Glu-X-His) box polypeptide 58

Calculated MW:

678 aa, 77 kDa

Observed MW:

77 kDa

Purification Method:

Antigen affinity purification

Recommended Dilutions:

WB 1:200-1:1000

IP 0.5-4.0 ug for 1.0-3.0 mg of total protein lysate

IHC 1:50-1:500

Applications

Tested Applications:

WB, IP, IHC, ELISA

Cited Applications:

WB, IHC, IF, IP, CoIP, RIP

Species Specificity:

human, mouse, rat

Cited Species:

human, mouse, pig, monkey, chicken

Note-IHC: suggested antigen retrieval with TE buffer pH 9.0; (*) Alternatively, antigen retrieval may be performed with citrate buffer pH 6.0

Positive Controls:

WB: HEK-293 cells, rat kidney tissue, rat liver tissue

IP: mouse liver tissue,

IHC: human breast cancer tissue, human nephroblastoma tissue

Background Information

DHX58 (Probable ATP-dependent RNA helicase DHX58) is also named as D11LGP2E, LGP2 and belongs to the RLR subfamily. DHX58, originally identified as a highly expressed gene in mammary tumors, is another cytoplasmic DEX(D/H)-box helicase that can recognize RNA (PMID: 18411269). It acts as a positive, but not negative, regulator of RIG-I- and MDA5-dependent recognition of RNA virus infection and plays a pivotal role in antiviral responses in vivo (PMID: 20080593).

Notable Publications

Author	Pubmed ID	Journal	Application
Li-Ling Lin	30179292	Cancer Sci	WB, IHC, IP
Akihiko Komuro	27743889	Biochem Biophys Res Commun	WB
Xiaojun Li	19278996	J Biol Chem	WB

Storage

Storage:

Store at -20°C. Stable for one year after shipment.

Storage Buffer:

PBS with 0.02% sodium azide and 50% glycerol pH 7.3.

Aliquoting is unnecessary for -20°C storage

*** 20ul sizes contain 0.1% BSA

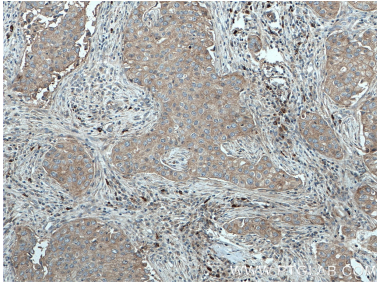
For technical support and original validation data for this product please contact:

T: 1 (888) 4PTGLAB (1-888-478-4522) (toll free in USA), or 1(312) 455-8498 (outside USA)

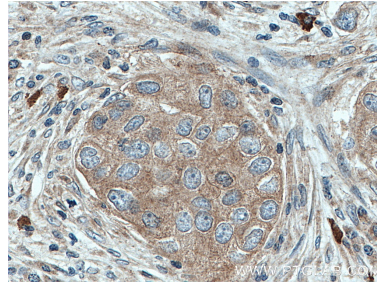
E: proteintech@ptglab.com
W: ptglab.com

This product is exclusively available under Proteintech Group brand and is not available to purchase from any other manufacturer.

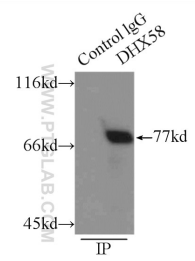
Selected Validation Data



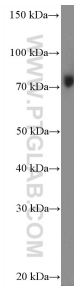
Immunohistochemical analysis of paraffin-embedded human breast cancer tissue slide using 11355-1-AP (DHX58/LGP2 antibody) at dilution of 1:200 (under 10x lens). Heat mediated antigen retrieval with Tris-EDTA buffer (pH 9.0).



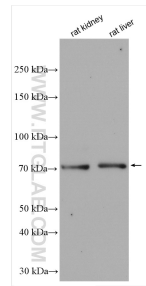
Immunohistochemical analysis of paraffin-embedded human breast cancer tissue slide using 11355-1-AP (DHX58/LGP2 antibody) at dilution of 1:200 (under 40x lens). Heat mediated antigen retrieval with Tris-EDTA buffer (pH 9.0).



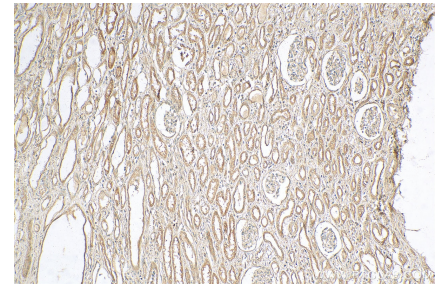
IP result of anti-DHX58/LGP2 (IP:11355-1-AP, 3ug; Detection:11355-1-AP 1:300) with mouse liver tissue lysate 6000ug.



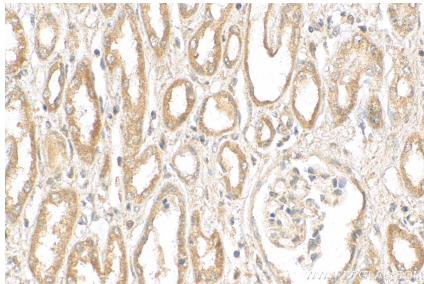
HEK-293 cells were subjected to SDS PAGE followed by western blot with 11355-1-AP (DHX58/LGP2 antibody) at dilution of 1:300 incubated at room temperature for 1.5 hours.



Various lysates were subjected to SDS PAGE followed by western blot with 11355-1-AP (DHX58/LGP2 antibody) at dilution of 1:500 incubated at room temperature for 1.5 hours.



Immunohistochemical analysis of paraffin-embedded human nephroblastoma tissue slide using 11355-1-AP (DHX58/LGP2 antibody) at dilution of 1:200 (under 10x lens). Heat mediated antigen retrieval with Tris-EDTA buffer (pH 9.0).



Immunohistochemical analysis of paraffin-embedded human nephroblastoma tissue slide using 11355-1-AP (DHX58/LGP2 antibody) at dilution of 1:200 (under 40x lens). Heat mediated antigen retrieval with Tris-EDTA buffer (pH 9.0).