

For Research Use Only

G1P3 Polyclonal antibody

Catalog Number: 11246-1-AP **2 Publications**



Basic Information

Catalog Number: 11246-1-AP	GenBank Accession Number: BC015603	Purification Method: Antigen affinity purification
Size: 150ul , Concentration: 450 µg/ml by Nanodrop;	GeneID (NCBI): 2537	Recommended Dilutions: IHC 1:50-1:500
Source: Rabbit	UNIPROT ID: P09912	
Isotype: IgG	Full Name: interferon, alpha-inducible protein 6	
Immunogen Catalog Number: AG1765	Calculated MW: 13 kDa	

Applications

Tested Applications: IHC, ELISA	Positive Controls: IHC : human breast cancer tissue, human colon tissue
Cited Applications: WB, IHC	
Species Specificity: human	
Cited Species: human	
Note-IHC: suggested antigen retrieval with TE buffer pH 9.0; (*) Alternatively, antigen retrieval may be performed with citrate buffer pH 6.0	

Background Information

G1P3, also named as IFI6, belongs to the FAM14 protein family and is localized in mitochondria. G1P3 is one of the interferon (IFN)-stimulated genes. It was reported as anti-apoptotic in myeloma, gastric and breast cancers (PMID: 29899394). G1P3 has 3 isoforms with the molecular mass of 13 kDa.

Notable Publications

Author	Pubmed ID	Journal	Application
Li Jianhua J	23832071	Nat Immunol	WB
Xiaohui Meng	37584284	Arthritis Rheumatol	IHC

Storage

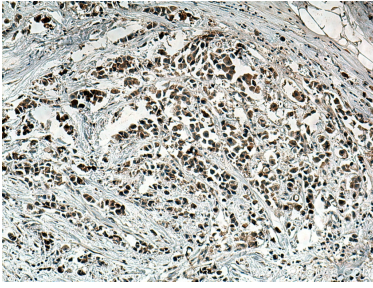
Storage:
Store at -20°C. Stable for one year after shipment.
Storage Buffer:
PBS with 0.02% sodium azide and 50% glycerol pH 7.3.
Aliquoting is unnecessary for -20°C storage

*** 20ul sizes contain 0.1% BSA

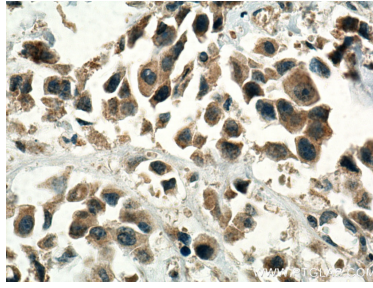
For technical support and original validation data for this product please contact:
T: 1 (888) 4PTGLAB (1-888-478-4522) (toll free in USA), or 1(312) 455-8498 (outside USA)
E: proteintech@ptglab.com
W: ptglab.com

This product is exclusively available under Proteintech Group brand and is not available to purchase from any other manufacturer.

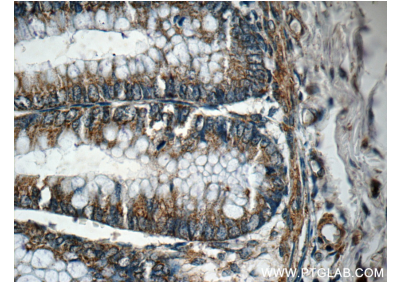
Selected Validation Data



Immunohistochemical analysis of paraffin-embedded human breast cancer tissue slide using 11246-1-AP (G1P3 antibody) at dilution of 1:200 (under 10x lens). Heat mediated antigen retrieval with Tris-EDTA buffer (pH 9.0).



Immunohistochemical analysis of paraffin-embedded human breast cancer tissue slide using 11246-1-AP (G1P3 antibody) at dilution of 1:200 (under 40x lens). Heat mediated antigen retrieval with Tris-EDTA buffer (pH 9.0).



Immunohistochemical analysis of paraffin-embedded human colon tissue slide using 11246-1-AP (G1P3 Antibody) at dilution of 1:50 (under 40x lens).