

For Research Use Only

ALPL Polyclonal antibody

Catalog Number: 11187-1-AP **69 Publications**



Basic Information

Catalog Number: 11187-1-AP	GenBank Accession Number: BC021289	Purification Method: Antigen affinity purification
Size: 150ul , Concentration: 650 ug/ml by Nanodrop;	GeneID (NCBI): 249	Recommended Dilutions: WB 1:500-1:2000 IHC 1:200-1:800
Source: Rabbit	UNIPROT ID: P05186	
Isotype: IgG	Full Name: alkaline phosphatase, liver/bone/kidney	
Immunogen Catalog Number: AG1664	Calculated MW: 57 kDa	
	Observed MW: 80 kDa	

Applications

Tested Applications:
WB, IHC, FC (Intra), ELISA

Cited Applications:
WB, IHC, IF, ChIP

Species Specificity:
human

Cited Species:
human

Note-IHC: suggested antigen retrieval with TE buffer pH 9.0; (*) Alternatively, antigen retrieval may be performed with citrate buffer pH 6.0

Positive Controls:

WB : HeLa cells,

IHC : human colon cancer tissue, human liver cancer tissue, mouse kidney tissue

Background Information

There are at least four distinct but related alkaline phosphatases: intestinal, placental, placental-like, and liver/bone/kidney (tissue non-specific). The product of this gene is a membrane bound glycosylated enzyme that is not expressed in any particular tissue and is, therefore, referred to as the tissue-nonspecific form of the enzyme. ALPL (Alkaline phosphatase, tissue-nonspecific isozyme) is also named as AP-TNAP, TNSALP and belongs to the alkaline phosphatase family. It can exist as a homodimer with the molecular weight of 140 kDa (PMID:18724009). ALPL was synthesized as a 66-kDa endo-b-N-acetylglucos-aminidase H (Endo H)-sensitive form, and processed to an 80-kDa mature form, which is anchored to the plasma membrane via glycosylphosphatidylinositol (GPI) (PMID:10839996). This antibody can bind the four mentioned alkaline phosphatases.

Notable Publications

Author	Pubmed ID	Journal	Application
Hong Wang	31556140	J Oral Rehabil	IHC
Bo Zhang	33000198	Mol Med Rep	WB
Kim Tak-Heun TH	21854758	Biochem Biophys Res Commun	IHC

Storage

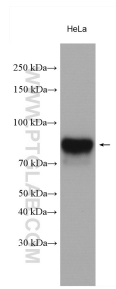
Storage:
Store at -20°C. Stable for one year after shipment.
Storage Buffer:
PBS with 0.02% sodium azide and 50% glycerol, pH7.3
Aliquoting is unnecessary for -20°C storage

*** 20ul sizes contain 0.1% BSA

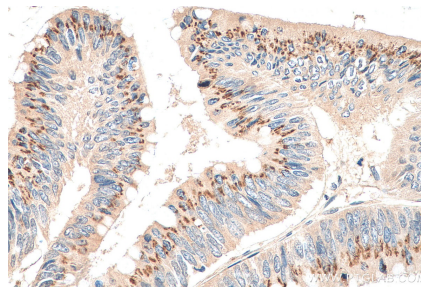
For technical support and original validation data for this product please contact:
T: 1 (888) 4PTGLAB (1-888-478-4522) (toll free in USA), or 1(312) 455-8498 (outside USA)
E: proteintech@ptglab.com
W: ptglab.com

This product is exclusively available under Proteintech Group brand and is not available to purchase from any other manufacturer.

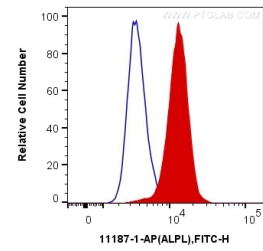
Selected Validation Data



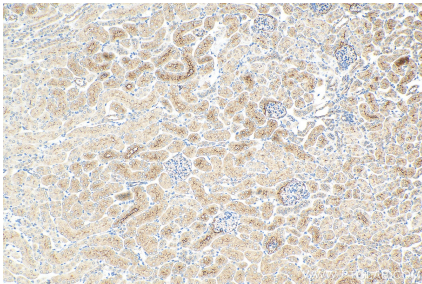
HeLa cells were subjected to SDS PAGE followed by western blot with 11187-1-AP (ALPL antibody) at dilution of 1:1000 incubated at room temperature for 1.5 hours.



Immunohistochemical analysis of paraffin-embedded human colon cancer tissue slide using 11187-1-AP (ALPL antibody) at dilution of 1:200 (under 40x lens). Heat mediated antigen retrieval with Tris-EDTA buffer (pH 9.0).



1×10^6 HeLa cells were intracellularly stained with 0.2 ug Anti-Human ALPL (11187-1-AP) and CoraLite@488-Conjugated AffiniPure Goat Anti-Rabbit IgG(H+L) at dilution 1:1000 (red), or 0.2 ug Control Antibody. Cells were fixed with 4% PFA and permeabilized with Flow Cytometry Perm Buffer (PF00011-C).



Immunohistochemical analysis of paraffin-embedded mouse kidney tissue slide using 11187-1-AP (ALPL antibody) at dilution of 1:600 (under 10x lens). Heat mediated antigen retrieval with Tris-EDTA buffer (pH 9.0).