

For Research Use Only

# Stathmin 1 Polyclonal antibody, PBS Only

Catalog Number: 11157-1-PBS

Featured Product



## Basic Information

**Catalog Number:**

11157-1-PBS

**Size:**

100ug, Concentration: 1 mg/ml by Nanodrop;

**Source:**

Rabbit

**Isotype:**

IgG

**Immunogen Catalog Number:**

AG1633

**GenBank Accession Number:**

BC014353

**GeneID (NCBI):**

3925

**UNIPROT ID:**

P16949

**Full Name:**

stathmin 1/oncoprotein 18

**Calculated MW:**

18 kDa

**Observed MW:**

18 kDa

**Purification Method:**

Antigen affinity purification

## Applications

**Tested Applications:**

WB, IHC, FC (Intra), Indirect ELISA

**Species Specificity:**

human

## Background Information

Stathmin 1 (STMN1) normally regulates microtubule dynamics either by sequestering free tubulin heterodimers or by promoting microtubule catastrophe. STMN1 is highly expressed in fetal and adult brain, spinal cord, and cerebellum. Many different phosphorylated forms are observed depending on specific combinations among the sites which can be phosphorylated. Phosphorylation of stathmin is involved in response to NGF, neuron polarization and microtubule polymerization inhibition activity. Increased expression of STMN1 has been observed in a variety of human malignancies, such as colorectal primary tumors and metastatic tissues, but its association with melanoma is so far not well known.

## Storage

**Storage:**

Store at -80°C.

**Storage Buffer:**

PBS Only

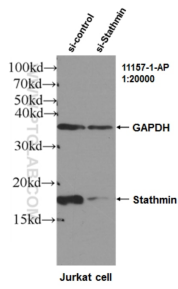
For technical support and original validation data for this product please contact:

T: 1 (888) 4PTGLAB (1-888-478-4522) (toll free in USA), or 1(312) 455-8498 (outside USA)

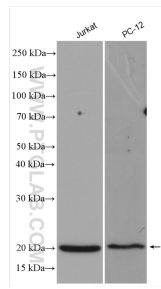
E: [proteintech@ptglab.com](mailto:proteintech@ptglab.com)  
W: [ptglab.com](http://ptglab.com)

**This product is exclusively available under Proteintech Group brand and is not available to purchase from any other manufacturer.**

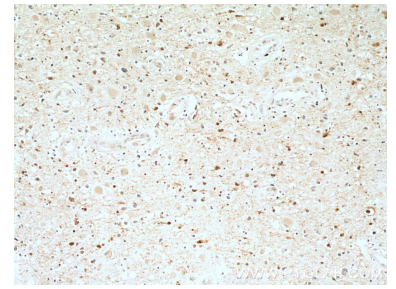
## Selected Validation Data



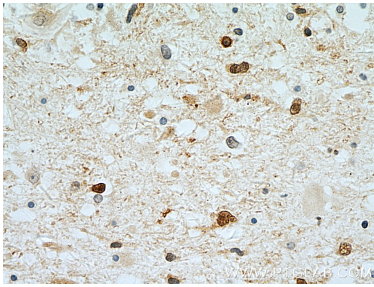
WB results of Stathmin antibody (11157-1-AP, 1:20000) with si-control and si-Stathmin transfected Jurkat cells. This data was developed using the same antibody clone with 11157-1-PBS in a different storage buffer formulation.



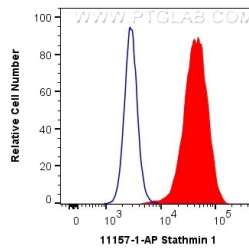
Various lysates were subjected to SDS PAGE followed by western blot with 11157-1-AP (Stathmin 1 antibody) at dilution of 1:2000 incubated at room temperature for 1.5 hours. This data was developed using the same antibody clone with 11157-1-PBS in a different storage buffer formulation.



Immunohistochemical analysis of paraffin-embedded human gliomas tissue slide using 11157-1-AP (Stathmin 1 antibody at dilution of 1:50 (under 10x lens). This data was developed using the same antibody clone with 11157-1-PBS in a different storage buffer formulation.



Immunohistochemical analysis of paraffin-embedded human gliomas using 11157-1-AP (Stathmin 1 antibody) at dilution of 1:50 (under 10x lens). This data was developed using the same antibody clone with 11157-1-PBS in a different storage buffer formulation.



1X10<sup>6</sup> HeLa cells were intracellularly stained with 0.4 ug Anti-Human Stathmin 1 (11157-1-AP) and CoraLite@488-Conjugated AffiniPure Goat Anti-Rabbit IgG(H+L) at dilution 1:1000 (red), or 0.4 ug Control Antibody. Cells were fixed with 4% PFA and permeabilized with Flow Cytometry Perm Buffer (PF00011-C). This data was developed using the same antibody clone with 11157-1-PBS in a different storage buffer formulation.