

For Research Use Only

MEK1/2 Polyclonal antibody, PBS Only

Catalog Number: 11049-1-PBS



Basic Information

Catalog Number: 11049-1-PBS	GenBank Accession Number: BC018645	Purification Method: Antigen affinity purification
Size: 100ug , Concentration: 1 mg/ml by Nanodrop;	GeneID (NCBI): 5605	
Source: Rabbit	UNIPROT ID: P36507	
Isotype: IgG	Full Name: mitogen-activated protein kinase kinase 2	
Immunogen Catalog Number: AG1481	Calculated MW: 44 kDa	
	Observed MW: 44-47 kDa	

Applications

Tested Applications:
WB, IHC, IF/ICC, IP, Indirect ELISA

Species Specificity:
human, mouse, rat

Background Information

MEK2(MAPK/ERK kinase 2) is also named as MAP2K2, MKK2, PRKMK2 and belongs to the MAP kinase kinase subfamily. MAPKK is itself dependent on Ser/Thr phosphorylation for activity catalyzed by MAP kinase kinase kinases (RAF or MEKK1). MEK1 and MEK2 are closely related, dual-specificity tyrosine/threonine protein kinases found in the Ras/Raf/MEK/ERK mitogen-activated protein kinase (MAPK) signaling pathway. 11049-1-AP can recognize both the MEK2 and MEK1.

Storage

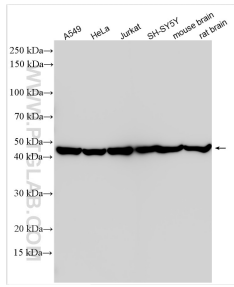
Storage:
Store at -80°C.

Storage Buffer:
PBS Only

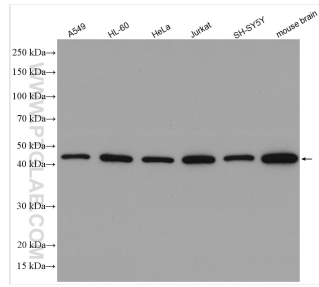
For technical support and original validation data for this product please contact:
T: 1 (888) 4PTGLAB (1-888-478-4522) (toll free in USA), or 1(312) 455-8498 (outside USA) E: proteintech@ptglab.com
W: ptglab.com

This product is exclusively available under Proteintech Group brand and is not available to purchase from any other manufacturer.

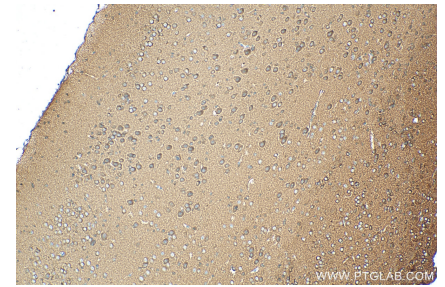
Selected Validation Data



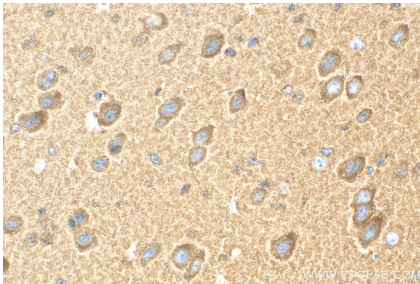
Various lysates were subjected to SDS PAGE followed by western blot with 11049-1-AP (MEK1/2 antibody) at dilution of 1:20000 incubated at room temperature for 1.5 hours. This data was developed using the same antibody clone with 11049-1-PBS in a different storage buffer formulation.



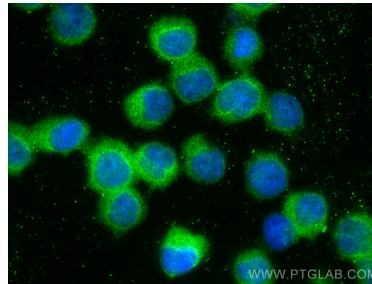
Various lysates were subjected to SDS PAGE followed by western blot with 11049-1-AP (MEK1/2 antibody) at dilution of 1:10000 incubated at room temperature for 1.5 hours. This data was developed using the same antibody clone with 11049-1-PBS in a different storage buffer formulation.



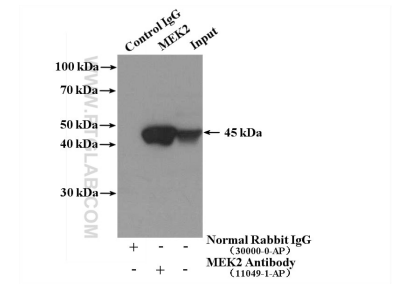
Immunohistochemical analysis of paraffin-embedded mouse brain tissue slide using 11049-1-AP (MEK1/2 antibody) at dilution of 1:200 (under 10x lens). Heat mediated antigen retrieval with Tris-EDTA buffer (pH 9.0). This data was developed using the same antibody clone with 11049-1-PBS in a different storage buffer formulation.



Immunohistochemical analysis of paraffin-embedded mouse brain tissue slide using 11049-1-AP (MEK1/2 antibody) at dilution of 1:200 (under 40x lens). Heat mediated antigen retrieval with Tris-EDTA buffer (pH 9.0). This data was developed using the same antibody clone with 11049-1-PBS in a different storage buffer formulation.



Immunofluorescent analysis of (4% PFA) fixed Jurkat cells using MEK1/2 antibody (11049-1-AP) at dilution of 1:200 and CoraLite@488-Conjugated AffiniPure Goat Anti-Rabbit IgG(H+L). This data was developed using the same antibody clone with 11049-1-PBS in a different storage buffer formulation.



IP result of anti-MEK1/2 (IP:11049-1-AP, 4ug; Detection:11049-1-AP 1:1000) with HL-60 cells lysate 1280ug. This data was developed using the same antibody clone with 11049-1-PBS in a different storage buffer formulation.