

For Research Use Only

human IgM Polyclonal antibody, PBS Only

Catalog Number: 11016-1-PBS



Basic Information

Catalog Number:

11016-1-PBS

Size:

100ug, Concentration: 1 mg/ml by Nanodrop;

Source:

Rabbit

Isotype:

IgG

Immunogen Catalog Number:

AG1459

GenBank Accession Number:

BC009851

GeneID (NCBI):

3507

Full Name:

immunoglobulin heavy constant mu

Calculated MW:

69 kDa

Observed MW:

75 kDa

Purification Method:

Antigen affinity purification

Applications

Tested Applications:

WB, IHC, Indirect ELISA

Species Specificity:

human

Background Information

This antibody detects the heavy chain of human IgM (~75 kDa).

Storage

Storage:

Store at -80°C.

Storage Buffer:

PBS Only

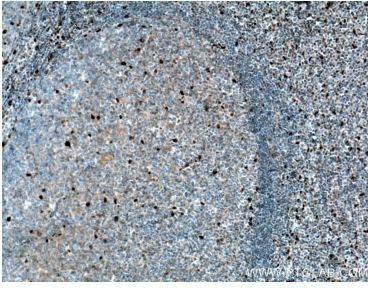
For technical support and original validation data for this product please contact:

T: 1 (888) 4PTGLAB (1-888-478-4522) (toll free in USA), or 1(312) 455-8498 (outside USA)

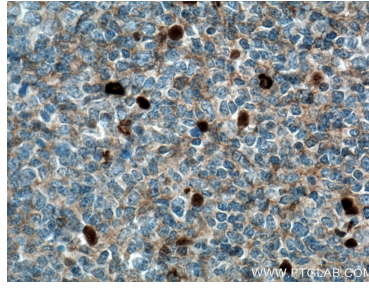
E: proteintech@ptglab.com
W: ptglab.com

This product is exclusively available under Proteintech Group brand and is not available to purchase from any other manufacturer.

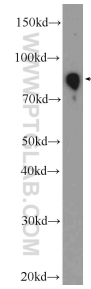
Selected Validation Data



Immunohistochemical analysis of paraffin-embedded human tonsillitis tissue slide using 11016-1-AP (IGHM antibody) at dilution of 1:200 (under 10x lens. Heat mediated antigen retrieval with Tris-EDTA buffer (pH 9.0). This data was developed using the same antibody clone with 11016-1-PBS in a different storage buffer formulation.



Immunohistochemical analysis of paraffin-embedded human tonsillitis tissue slide using 11016-1-AP (IGHM antibody) at dilution of 1:200 (under 40x lens. Heat mediated antigen retrieval with Tris-EDTA buffer (pH 9.0). This data was developed using the same antibody clone with 11016-1-PBS in a different storage buffer formulation.



human plasma were subjected to SDS PAGE followed by western blot with 11016-1-AP (IGHM Antibody) at dilution of 1:1000 incubated at room temperature for 1.5 hours. This data was developed using the same antibody clone with 11016-1-PBS in a different storage buffer formulation.