

For Research Use Only

LSM2 Polyclonal antibody

Catalog Number: 10963-1-AP

1 Publications



Basic Information

Catalog Number:

10963-1-AP

Size:

150ul, Concentration: 120 ug/ml by Nanodrop;

Source:

Rabbit

Isotype:

IgG

Immunogen Catalog Number:

AG1412

GenBank Accession Number:

BC009192

GeneID (NCBI):

57819

UNIPROT ID:

Q9Y333

Full Name:

LSM2 homolog, U6 small nuclear RNA associated (*S. cerevisiae*)

Calculated MW:

11 kDa

Observed MW:

11 kDa

Purification Method:

Antigen affinity purification

Recommended Dilutions:

WB 1:500-1:2000

Applications

Tested Applications:

WB, ELISA

Cited Applications:

IHC

Species Specificity:

human, mouse

Cited Species:

human

Positive Controls:

WB: human placenta tissue, HEK-293 cells, K-562 cells, mouse brain tissue

Background Information

Sm-like proteins were identified in a variety of organisms based on sequence homology with the Sm protein family. Sm-like proteins contain the Sm sequence motif, which consists of 2 regions separated by a linker of variable length that folds as a loop. The Sm-like proteins are thought to form a stable heteromer present in tri-snRNP particles, which are important for pre-mRNA splicing (PMID:15075370). Lsm2-Lsm8 (Lsm stands for Like Sm), binds and stabilizes the 3' end of the spliceosomal U6 snRNA. Lsm proteins facilitate the annealing of U6 snRNA with U4 snRNA in vitro and interact with the U4/U6 annealing factor Prp24, suggesting that Lsm proteins function in U4/U6 snRNP formation in vivo (PMID:15485930, 17251193).

Notable Publications

Author	Pubmed ID	Journal	Application
Lin Shih-Jie SJ	24080422	J Proteomics	IHC

Storage

Storage:

Store at -20°C. Stable for one year after shipment.

Storage Buffer:

PBS with 0.02% sodium azide and 50% glycerol pH 7.3.

Aliquoting is unnecessary for -20°C storage

*** 20ul sizes contain 0.1% BSA

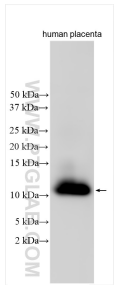
For technical support and original validation data for this product please contact:

T: 1 (888) 4PTGLAB (1-888-478-4522) (toll free in USA), or 1(312) 455-8498 (outside USA)

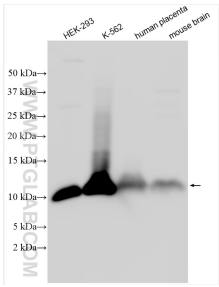
E: proteintech@ptglab.com
W: ptglab.com

This product is exclusively available under Proteintech Group brand and is not available to purchase from any other manufacturer.

Selected Validation Data



Various lysates were subjected to SDS PAGE followed by western blot with 10963-1-AP (LSM2 antibody) at dilution of 1:1000 incubated at room temperature for 1.5 hours.



Various lysates were subjected to SDS PAGE followed by western blot with 10963-1-AP (LSM2 antibody) at dilution of 1:1500 incubated at room temperature for 1.5 hours.