

For Research Use Only

Cathepsin L Polyclonal antibody

Catalog Number:10938-1-AP

Featured Product

13 Publications



Basic Information

Catalog Number: 10938-1-AP	GenBank Accession Number: BC012612	Purification Method: Antigen affinity purification
Size: 150ul , Concentration: 300 µg/ml by Nanodrop and 147 µg/ml by Bradford method using BSA as the standard;	GeneID (NCBI): 1514	Recommended Dilutions: WB 1:200-1:1000 IHC 1:50-1:500 IF/ICC 1:50-1:500
Source: Rabbit	UNIPROT ID: P07711	
Isotype: IgG	Full Name: cathepsin L1	
Immunogen Catalog Number: AG1373	Calculated MW: 38 kDa	
	Observed MW: 36-39 kDa, 29 kDa	

Applications

Tested Applications: WB, IF, IHC, ELISA	Positive Controls: WB : A549 cells, IHC : human skin tissue, IF/ICC : HepG2 cells,
Cited Applications: WB, IHC, IF	
Species Specificity: human	
Cited Species: human, rat	

Note-IHC: suggested antigen retrieval with TE buffer pH 9.0; (*) Alternatively, antigen retrieval may be performed with citrate buffer pH 6.0

Background Information

CTSL1(Cathepsin L1) is also named as CTSL and MEP, belongs to the peptidase C1 family. It is a lysosomal proteinase whose expression is also up-regulated in the skeletal muscle during starvation(PMID:20088826). It plays an intracellular role in normal intestinal epithelial polarization and initiation of neoplasia(PMID:17622569). CTSL1 also improves cardiac function and inhibits cardiac hypertrophy, inflammation, and fibrosis through blocking AKT/GSK3B signaling(PMID:19096818). The full length protein is 38 kDa with a signal peptide, two propeptide and a glycosylation site. It has been detected the 36 kDa, 39 kDa, 29 kDa and 21 kDa in rat gastrocnemius muscle. These forms of cathepsin L could either be attributed to differences in glycosylation or to partial processing of the proenzyme. (PMID:11696001)

Notable Publications

Author	Pubmed ID	Journal	Application
Jana Ihlow	34479499	BMC Infect Dis	IHC
Peng Liu	31632196	Cancer Cell Int	WB
Qiang Dong	34807310	J Cancer Res Clin Oncol	WB

Storage

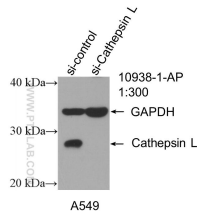
Storage:
Store at -20°C. Stable for one year after shipment.
Storage Buffer:
PBS with 0.02% sodium azide and 50% glycerol pH 7.3.
Aliquoting is unnecessary for -20°C storage

*** 20ul sizes contain 0.1% BSA

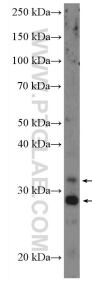
For technical support and original validation data for this product please contact:
T: 1 (888) 4PTGLAB (1-888-478-4522) (toll free in USA), or 1(312) 455-8498 (outside USA)
E: proteintech@ptglab.com
W: ptglab.com

This product is exclusively available under Proteintech Group brand and is not available to purchase from any other manufacturer.

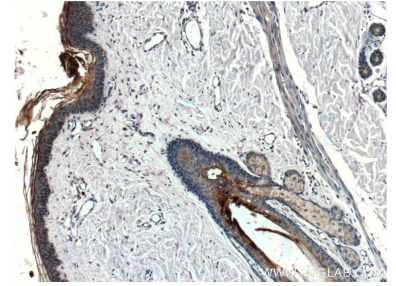
Selected Validation Data



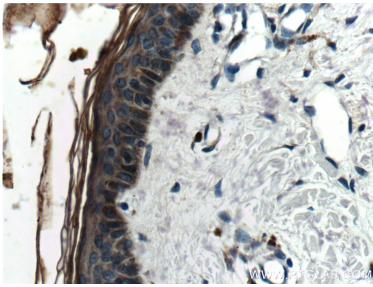
WB result of Cathepsin L antibody (10938-1-AP; 1:300; incubated at room temperature for 1.5 hours) with sh-Control and sh-Cathepsin L transfected A549 cells.



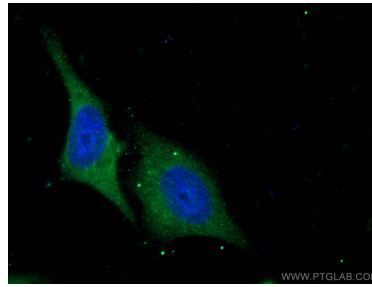
A549 cells were subjected to SDS PAGE followed by western blot with 10938-1-AP (Cathepsin L Antibody) at dilution of 1:300 incubated at room temperature for 1.5 hours.



Immunohistochemical analysis of paraffin-embedded human skin tissue slide using 10938-1-AP (Cathepsin L Antibody) at dilution of 1:200 (under 10x lens).



Immunohistochemical analysis of paraffin-embedded human skin tissue slide using 10938-1-AP (Cathepsin L Antibody) at dilution of 1:200 (under 40x lens).



Immunofluorescent analysis of (-20°C Ethanol) fixed HepG2 cells using 10938-1-AP (Cathepsin L antibody), at dilution of 1:100 and CoraLite@488-Conjugated Goat Anti-Rabbit IgG(H+L).