

For Research Use Only

# Palladin Polyclonal antibody

Catalog Number: 10853-1-AP

Featured Product

76 Publications



## Basic Information

### Catalog Number:

10853-1-AP

### Size:

150ul, Concentration: 300 ug/ml by Nanodrop and 213 ug/ml by Bradford method using BSA as the standard;

### Source:

Rabbit

### Isotype:

IgG

### Immunogen Catalog Number:

AG1288

### GenBank Accession Number:

BC013867

### GeneID (NCBI):

23022

### UNIPROT ID:

Q8WX93

### Full Name:

palladin, cytoskeletal associated protein

### Calculated MW:

1383 aa, 151 kDa

### Observed MW:

95 kDa, 140 kDa

### Purification Method:

Antigen affinity purification

### Recommended Dilutions:

WB: 1:1000-1:4000

IP: 0.5-4.0 ug for 1.0-3.0 mg of total protein lysate

IHC: 1:50-1:500

IF/ICC: 1:50-1:500

FC (Intra): 0.40 ug per 10<sup>6</sup> cells in a 100 µl suspension

## Applications

### Tested Applications:

WB, IHC, IF/ICC, FC (Intra), IP, ELISA

### Cited Applications:

WB, IHC, IF, IP, COIP

### Species Specificity:

human, mouse

### Cited Species:

human, mouse, rat

### Positive Controls:

WB: HeLa cells, A549 cells

IP: HeLa cells, HEK-293 cells

IHC: human colon cancer tissue, human breast cancer tissue, human colon tissue, human ovary tumor tissue

IF/ICC: HeLa cells,

FC (Intra): HeLa cells,

**Note-IHC: suggested antigen retrieval with TE buffer pH 9.0; (\*) Alternatively, antigen retrieval may be performed with citrate buffer pH 6.0**

## Background Information

Palladin is an actin associated protein serving as a cytoskeleton scaffold, and actin cross linker, localizing at stress fibers, focal adhesions, and other actin based structures. Palladin exists as multiple isoforms through alternative transcription initiation sites and splicing. There are three major isoforms (200, 140, 90-92 kDa) and multiple minor isoforms. Different palladin isoforms are expressed in a tissue-specific pattern during development and in adult organs: the 200 kDa isoform is predominantly expressed in the heart, skeletal muscle, testis and bone; the 140 kDa isoform is widely expressed with the exception of liver, muscle, and skin; the 90-92 kDa isoform is broadly expressed in embryonic tissues and highly expressed in adult smooth muscle tissues (21455759). Recently overexpression of palladin has been linked to the promoted invasive motility in several types of cancers (18978809, 22291919). The 85-90 kDa palladin isoform has been observed predominantly expressed in pancreatic ductal adenocarcinoma (PDA) while a 65 kDa isoform is expressed in normal pancreas and non-PDA tumors (20436683). This antibody, generated against the fragment 999-1383aa of palladin, recognizes most isoforms of this protein, except isoform 6.

## Notable Publications

Author	Pubmed ID	Journal	Application
Sheng Hu	36038029	Neurosci Lett	WB
Avital Gilam	27641360	Nat Commun	WB, IHC
Xiang Zhang	28924223	Sci Rep	WB, IF, COIP

## Storage

### Storage:

Store at -20°C. Stable for one year after shipment.

### Storage Buffer:

PBS with 0.02% sodium azide and 50% glycerol, pH7.3

Aliquoting is unnecessary for -20°C storage

\*\*\* 20ul sizes contain 0.1% BSA

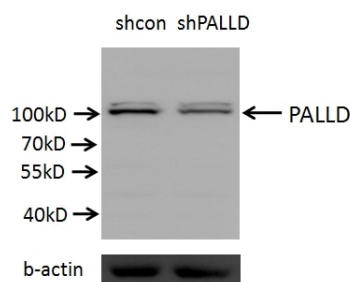
For technical support and original validation data for this product please contact:

T: 1 (888) 4PTGLAB (1-888-478-4522) (toll free in USA), or 1(312) 455-8498 (outside USA)

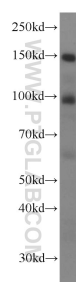
E: [proteintech@ptglab.com](mailto:proteintech@ptglab.com)  
W: [ptglab.com](http://ptglab.com)

This product is exclusively available under Proteintech Group brand and is not available to purchase from any other manufacturer.

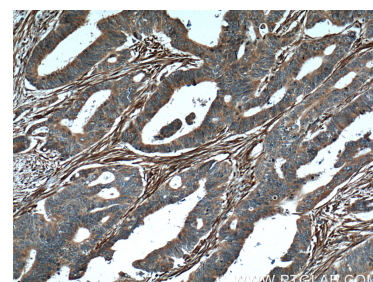
## Selected Validation Data



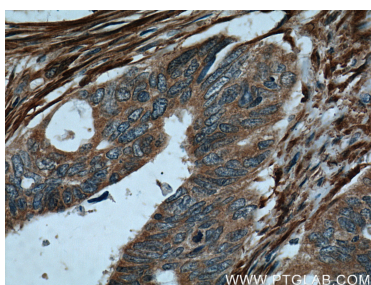
A549 cells (shcontrol and shRNA of PALLD) were subjected to SDS PAGE followed by western blot with 10853-1-AP (PALLD antibody) at dilution of 1:2000.



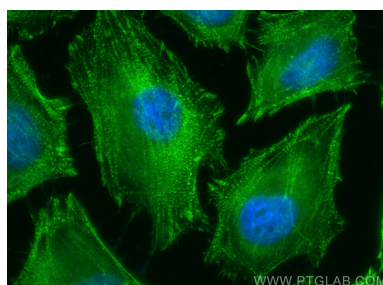
HeLa cells were subjected to SDS PAGE followed by western blot with 10853-1-AP (Palladin antibody) at dilution of 1:2000 incubated at room temperature for 1.5 hours.



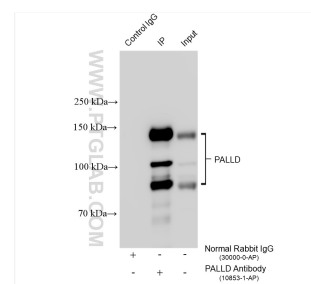
Immunohistochemical analysis of paraffin-embedded human colon cancer tissue slide using 10853-1-AP (PALLD, palladin Antibody) at dilution of 1:200 (under 10x lens). Heat mediated antigen retrieval with Tris-EDTA buffer (pH 9.0).



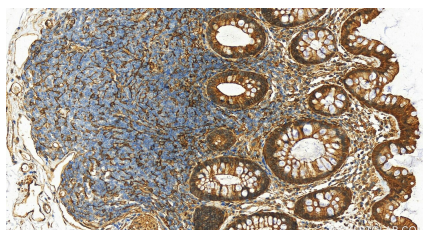
Immunohistochemical analysis of paraffin-embedded human colon cancer tissue slide using 10853-1-AP (PALLD, palladin Antibody) at dilution of 1:200 (under 40x lens). Heat mediated antigen retrieval with Tris-EDTA buffer (pH 9.0).



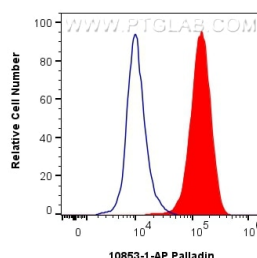
Immunofluorescent analysis of (-20°C Ethanol) fixed HeLa cells using Palladin antibody (10853-1-AP) at dilution of 1:200 and CoraLite®488-Conjugated Goat Anti-Rabbit IgG(H+L) (SA00013-2).



IP result of anti-Palladin (IP:10853-1-AP, 4ug; Detection:10853-1-AP 1:8000) with HeLa cells lysate 1280 ug.



Immunohistochemical analysis of paraffin-embedded human colon tissue slide using 10853-1-AP (Palladin antibody) at dilution of 1:400 (under 20x lens). Heat mediated antigen retrieval with Tris-EDTA buffer (pH 9.0).



1x10<sup>6</sup> HeLa cells were intracellularly stained with 0.4 ug Palladin Polyclonal antibody (10853-1-AP) and CoraLite®488-Conjugated AffiniPure Goat Anti-Rabbit IgG(H+L) (SA00013-2)(red), or 0.4 ug Rabbit IgG control Rabbit PolyAb (30000-O-AP) (blue). Cells were fixed with 4% PFA and permeabilized with Flow Cytometry Perm Buffer (PF00011-C).