

For Research Use Only

CLTA Polyclonal antibody

Catalog Number: 10852-1-AP

Featured Product

22 Publications



Basic Information

Catalog Number:

10852-1-AP

Size:

150ul, Concentration: 1000 ug/ml by Nanodrop;

Source:

Rabbit

Isotype:

IgG

Immunogen Catalog Number:

AG1299

GenBank Accession Number:

BC019287

GeneID (NCBI):

1211

UNIPROT ID:

P09496

Full Name:

clathrin, light chain (Lca)

Calculated MW:

27 kDa

Observed MW:

35-38 kDa

Purification Method:

Antigen affinity purification

Recommended Dilutions:

WB 1:5000-1:50000

IP 0.5-4.0 ug for 1.0-3.0 mg of total protein lysate

IHC 1:50-1:500

IF/ICC 1:250-1:1000

Applications

Tested Applications:

WB, IHC, IF/ICC, IP, ELISA

Cited Applications:

WB, IHC, IF, IP

Species Specificity:

human, mouse, rat

Cited Species:

human, mouse, rat, canine, monkey

Note-IHC: suggested antigen retrieval with TE buffer pH 9.0; (*) Alternatively, antigen retrieval may be performed with citrate buffer pH 6.0

Positive Controls:

WB: HEK-293 cells, mouse brain tissue, K-562 cells, Raji cells, C2C12 cells, C6 cells, PC-12 cells

IP: mouse brain tissue,

IHC: human breast cancer tissue,

IF/ICC: HepG2 cells, HEK-293 cells

Background Information

Clathrin is the major protein of the polyhedral coat of coated pits and vesicles which entrap specific macromolecules during receptor-mediated endocytosis. The clathrin molecule has a triskelion shape. Each clathrin triskelion is composed of three identical heavy chains (180 kDa) and three light chains of two types, LCA (CLTA) and LCB (CLTB) (30-40 kDa). The light chain subunits are thought to regulate the formation or disassembly of clathrin coats. (PMID: 2445759; 8374173; 3563513)

Notable Publications

Author	Pubmed ID	Journal	Application
Mitsuo Osuga	34495704	Mol Biol Cell	WB,IF
Medendorp Klaas K	21152103	PLoS One	WB,IF,IP
Xianfang Meng	22660985	Neurogenetics	IF

Storage

Storage:

Store at -20°C. Stable for one year after shipment.

Storage Buffer:

PBS with 0.02% sodium azide and 50% glycerol pH 7.3.

Aliquoting is unnecessary for -20°C storage

*** 20ul sizes contain 0.1% BSA

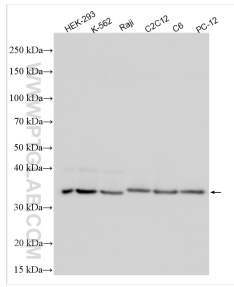
For technical support and original validation data for this product please contact:

T: 1 (888) 4PTGLAB (1-888-478-4522) (toll free in USA), or 1(312) 455-8498 (outside USA)

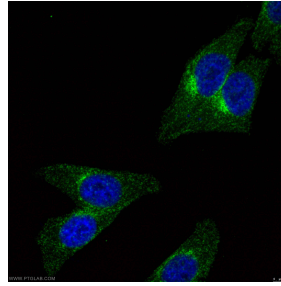
E: proteintech@ptglab.com
W: ptglab.com

This product is exclusively available under Proteintech Group brand and is not available to purchase from any other manufacturer.

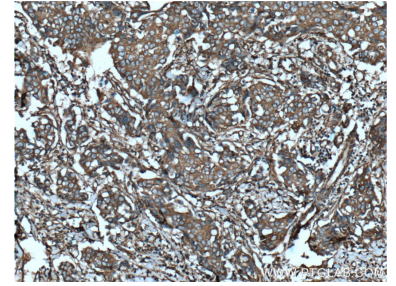
Selected Validation Data



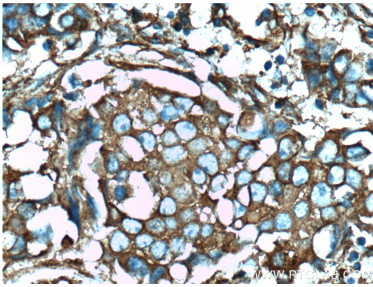
Various lysates were subjected to SDS PAGE followed by western blot with 10852-1-AP (CLTA antibody) at dilution of 1:10000 incubated at room temperature for 1.5 hours.



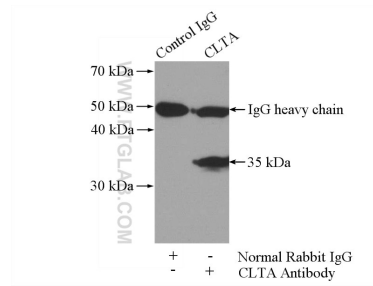
Immunofluorescent analysis of (4% PFA) fixed HepG2 cells using 10852-1-AP (CLTA antibody) at dilution of 1:500 and Alexa Fluor 488-Conjugated Goat Anti-Rabbit IgG(H+L).



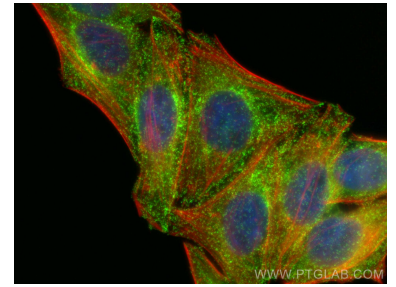
Immunohistochemical analysis of paraffin-embedded human breast cancer tissue slide using 10852-1-AP (CLTA Antibody) at dilution of 1:200 (under 10x lens). Heat mediated antigen retrieval with Tris-EDTA buffer (pH 9.0).



Immunohistochemical analysis of paraffin-embedded human breast cancer tissue slide using 10852-1-AP (CLTA Antibody) at dilution of 1:200 (under 40x lens). Heat mediated antigen retrieval with Tris-EDTA buffer (pH 9.0).



IP result of anti-CLTA (IP:10852-1-AP, 4 μ g; Detection:10852-1-AP 1:800) with mouse brain tissue lysate 4000 μ g.



Immunofluorescent analysis of (4% PFA) fixed HepG2 cells using CLTA antibody (10852-1-AP) at dilution of 1:400 and Multi-rAb CoraLite[®] Plus 488-Goat Anti-Rabbit Recombinant Secondary Antibody (H+L) (RGAR002), CL594-phalloidin (red).