

For Research Use Only

ARF3 Polyclonal antibody, PBS Only

Catalog Number:10800-1-PBS



Basic Information

Catalog Number: 10800-1-PBS	GenBank Accession Number: BC017565	Purification Method: Antigen affinity purification
Size: 100ug , Concentration: 1 mg/ml by Nanodrop;	GeneID (NCBI): 377	
Source: Rabbit	UNIPROT ID: P61204	
Isotype: IgG	Full Name: ADP-ribosylation factor 3	
Immunogen Catalog Number: AG1174	Calculated MW: 21 kDa	
	Observed MW: 18-20 kDa	

Applications

Tested Applications:
WB, IHC, IF/ICC, Indirect ELISA

Species Specificity:
human, mouse, rat

Background Information

ADP-ribosylation factors (ARFs) are members of the ARF family of GTP-binding proteins of the Ras superfamily, with 20kda protein size. ARFs bind and regulate GTP/GDP cycle by alternating between the active GTP-bound and inactive GDP-bound conformations. ARF family proteins are essential and ubiquitous in eukaryotes. Six highly conserved members of the family have been identified in mammalian cells. They function in vesicular traffic and actin remodelling and other bioprocesses in cells. ARF3 is 95% homolouous to ARF1. Its function was not fully understood. (PMID: 7759471, PMID: 16042562). This antibody can bind ARFs for the close sequences.

Storage

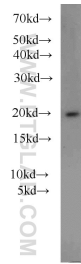
Storage:
Store at -80°C.

Storage Buffer:
PBS Only

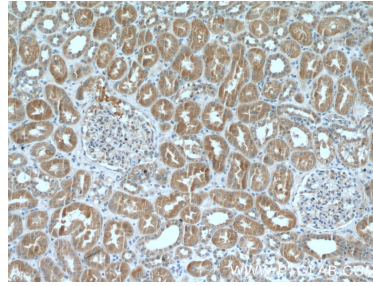
For technical support and original validation data for this product please contact:
T: 1 (888) 4PTGLAB (1-888-478-4522) (toll free in USA), or 1(312) 455-8498 (outside USA) E: proteintech@ptglab.com
W: ptglab.com

This product is exclusively available under Proteintech Group brand and is not available to purchase from any other manufacturer.

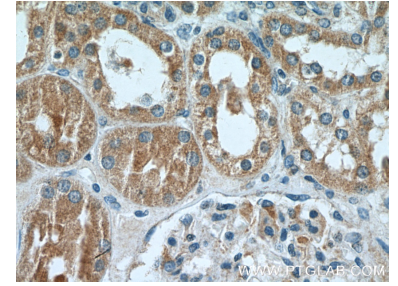
Selected Validation Data



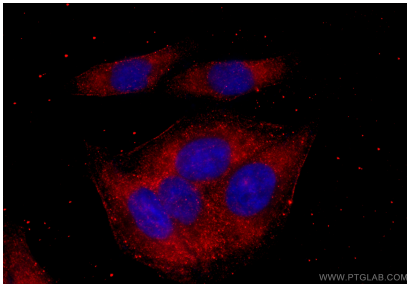
mouse brain tissue were subjected to SDS PAGE followed by western blot with 10800-1-AP (ARF3 antibody) at dilution of 1:1000 incubated at room temperature for 1.5 hours. This data was developed using the same antibody clone with 10800-1-PBS in a different storage buffer formulation.



Immunohistochemical analysis of paraffin-embedded human kidney tissue slide using 10800-1-AP (ARF3 Antibody) at dilution of 1:200 (under 10x lens). This data was developed using the same antibody clone with 10800-1-PBS in a different storage buffer formulation.



Immunohistochemical analysis of paraffin-embedded human kidney tissue slide using 10800-1-AP (ARF3 Antibody) at dilution of 1:200 (under 40x lens). This data was developed using the same antibody clone with 10800-1-PBS in a different storage buffer formulation.



Immunofluorescent analysis of (-20°C Ethanol) fixed HepG2 cells using ARF3 antibody (10800-1-AP) at dilution of 1:200 and CoraLite®594-Conjugated Goat Anti-Rabbit IgG(H+L) (SA00013-4). This data was developed using the same antibody clone with 10800-1-PBS in a different storage buffer formulation.