

For Research Use Only

# Bcl-XL Polyclonal antibody

Catalog Number:10783-1-AP

Featured Product

193 Publications



## Basic Information

**Catalog Number:**

10783-1-AP

**Size:**

150ul , Concentration: 450 ug/ml by Nanodrop;

**Source:**

Rabbit

**Isotype:**

IgG

**Immunogen Catalog Number:**

AG1232

**GenBank Accession Number:**

BC019307

**GeneID (NCBI):**

598

**UNIPROT ID:**

Q07817

**Full Name:**

BCL2-like 1

**Calculated MW:**

26 kDa

**Observed MW:**

30 kDa

**Purification Method:**

Antigen affinity purification

**Recommended Dilutions:**

WB 1:2000-1:12000

IP 0.5-4.0 ug for 1.0-3.0 mg of total protein lysate

IHC 1:50-1:500

IF/ICC 1:200-1:800

## Applications

**Tested Applications:**

WB, IHC, IF/ICC, IP, ELISA

**Cited Applications:**

WB, IHC, IF, IP, ChIP

**Species Specificity:**

human, mouse, rat

**Cited Species:**

human, mouse, rat, pig, canine, zebrafish, hamster, sheep, goat

**Note-IHC: suggested antigen retrieval with TE buffer pH 9.0; (\*) Alternatively, antigen retrieval may be performed with citrate buffer pH 6.0**

**Positive Controls:**

**WB :** A549 cells, Raji cells, Jurkat cells, rat brain tissue, HeLa cells, NIH/3T3 cells, human placenta tissue, C6 cells, K-562 cells, mouse placenta tissue, RAW264.7

**IP :** k-562 cells,

**IHC :** human lung cancer tissue, human colon tissue

**IF/ICC :** NIH/3T3 cells,

## Background Information

BCL2L1 is a member of the BCL-2 protein family. BCL2L1 is expressed as three isoforms, Bcl-X(L), Bcl-X(s), and Bcl-X(beta), and is located at the outer mitochondrial membrane. The Bcl-X(L) isoform is a 233 amino acid protein, acting as an apoptotic inhibitor. Bcl-XL can form heterodimers with BAX, BAK, or BCL2, and the heterodimerization with BAX does not seem to be required for anti-apoptotic activity. The Bcl-X(s) isoform is a shorter variant that is 178 amino acids in length and lacks a 63 amino acid region (amino acids 126-188), acting as an apoptotic activator. Bcl-X(beta) is a 227 amino acid protein. This antibody can recognize Bcl-XL, Bcl-X(s) and Bcl-X(Beta).

## Notable Publications

Author	Pubmed ID	Journal	Application
Yanhui Zhu	36183949	J Ethnopharmacol	IF
Xufeng Tao	25083618	Transplantation	WB
Yanling Lin	36139911	Antioxidants (Basel)	WB

## Storage

**Storage:**

Store at -20°C. Stable for one year after shipment.

**Storage Buffer:**

PBS with 0.02% sodium azide and 50% glycerol pH 7.3.

Aliquoting is unnecessary for -20°C storage

\*\*\* 20ul sizes contain 0.1% BSA

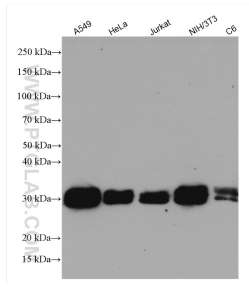
For technical support and original validation data for this product please contact:

T: 1 (888) 4PTGLAB (1-888-478-4522) (toll free in USA), or 1(312) 455-8498 (outside USA)

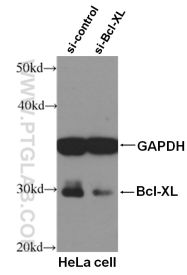
E: proteintech@ptglab.com  
W: ptglab.com

This product is exclusively available under Proteintech Group brand and is not available to purchase from any other manufacturer.

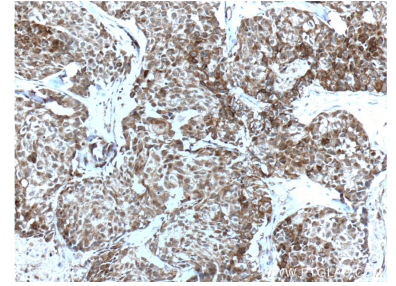
## Selected Validation Data



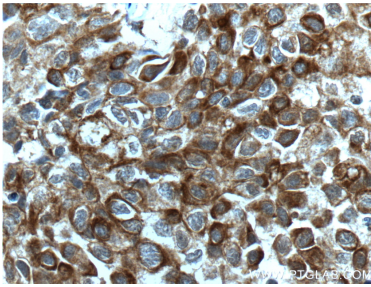
Various lysates were subjected to SDS PAGE followed by western blot with 10783-1-AP (Bcl-XL antibody) at dilution of 1:8000 incubated at room temperature for 1.5 hours.



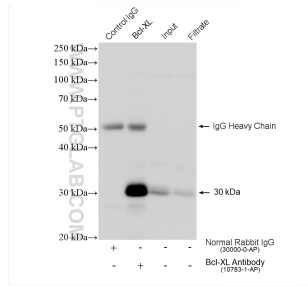
WB result of Bcl-XL antibody (10783-1-AP, 1:800) with si-Control and si-Bcl-XL transfected HeLa cells.



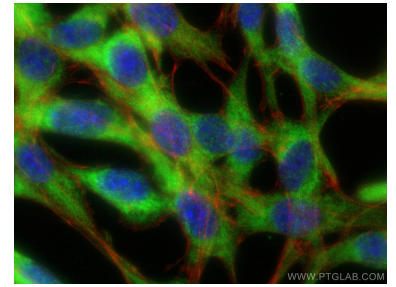
Immunohistochemical analysis of paraffin-embedded human lung cancer tissue slide using 10783-1-AP (Bcl-XL antibody) at dilution of 1:200 (under 10x lens). Heat mediated antigen retrieval with Tris-EDTA buffer (pH 9.0).



Immunohistochemical analysis of paraffin-embedded human lung cancer tissue slide using 10783-1-AP (Bcl-XL antibody) at dilution of 1:200 (under 40x lens). Heat mediated antigen retrieval with Tris-EDTA buffer (pH 9.0).



IP result of anti-Bcl-XL (IP:10783-1-AP, 4ug; Detection:10783-1-AP 1:1000) with k-562 cells lysate 1760 ug.



Immunofluorescent analysis of (-20°C Ethanol) fixed NIH/3T3 cells using Bcl-XL antibody (10783-1-AP) at dilution of 1:400 and CoraLite®488-Conjugated Goat Anti-Rabbit IgG(H+L) (SA00013-2), CL594-Phalloidin (red).