

For Research Use Only

NF- κ B p65 Polyclonal antibody

Catalog Number: 10745-1-AP

Featured Product

840 Publications



Basic Information

Catalog Number: 10745-1-AP	GenBank Accession Number: BC011603	Purification Method: Antigen affinity purification
Size: 150ul , Concentration: 520 μ g/ml by Nanodrop;	GeneID (NCBI): 5970	Recommended Dilutions: WB 1:500-1:2000 IP 0.5-4.0 ug for IP and 1:500-1:2000 for WB
Source: Rabbit	Full Name: v-rel reticuloendotheliosis viral oncogene homolog A (avian)	IHC 1:50-1:500 IF 1:50-1:500
Isotype: IgG	Calculated MW: 65 kDa	
Immunogen Catalog Number: AG1199	Observed MW: 65 kDa	

Applications

Tested Applications:
FC, IF, IHC, IP, WB, ELISA

Cited Applications:
ChIP, CoIP, IF, IHC, IP, WB

Species Specificity:
human

Cited Species:
Bombyx mori, bovine, canine, chicken, fish, hamster, human, monkey, pig

Note-IHC: suggested antigen retrieval with TE buffer pH 9.0; (*) Alternatively, antigen retrieval may be performed with citrate buffer pH 6.0

Positive Controls:

WB : A431 cells, Jurkat cells, MCF-7 cells, K-562 cells, Hek-293 cells, HeLa cells

IP : HeLa cells,

IHC : human breast cancer tissue, human stomach tissue, human liver cancer tissue

IF : HepG2 cells,

Background Information

Nuclear factor κ B (NF- κ B) is a sequence-specific DNA-binding protein complex which regulates the expression of viral genomes, including the human immunodeficiency virus, and a variety of cellular genes, particularly those involved in immune and inflammatory responses. The members of the NF- κ B family in mammalian cells include the proto-oncogene c-Rel, p50/p105 (NF κ B1), p65 (RelA), p52/p100 (NF κ B2), and RelB. All of these proteins share a conserved 300-amino acid region known as the Rel homology domain which is responsible for DNA binding, dimerization, and nuclear translocation of NF- κ B. The p65 subunit is a major component of NF- κ B complexes and is responsible for trans-activation. NF- κ B heterodimeric p65-p50 and p65-c-Rel complexes are transcriptional activators. The NF- κ B p65-p65 complex appears to be involved in invasion-mediated activation of IL-8 expression. The inhibitory effect of I κ B upon NF- κ B in the cytoplasm is exerted primarily through the interaction with p65. p65 shows a weak DNA-binding site which could contribute directly to DNA binding in the NF- κ B complex. It associates with chromatin at the NF- κ B promoter region via association with DDX1. This antibody is a rabbit polyclonal antibody raised against residues near the N terminus of human RELA.

Notable Publications

Author	Pubmed ID	Journal	Application
Yanliang Wu	34601083	J Ethnopharmacol	WB
Kun-Yi Li	32920833	J Neurochem	WB
Zilu Zhang	34570444	Cancer Biol Med	IF, WB

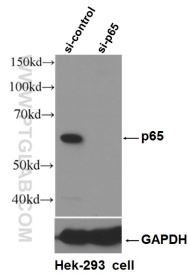
Storage

Storage:
Store at -20°C. Stable for one year after shipment.
Storage Buffer:
PBS with 0.02% sodium azide and 50% glycerol pH 7.3.
Aliquoting is unnecessary for -20°C storage

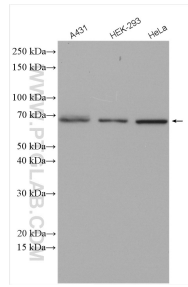
For technical support and original validation data for this product please contact:
T: 1 (888) 4PTGLAB (1-888-478-4522) (toll free in USA), or 1(312) 455-8498 (outside USA)
E: proteintech@ptglab.com
W: ptglab.com

This product is exclusively available under Proteintech Group brand and is not available to purchase from any other manufacturer.

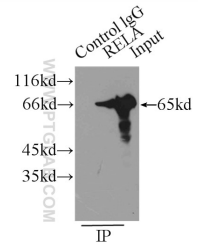
Selected Validation Data



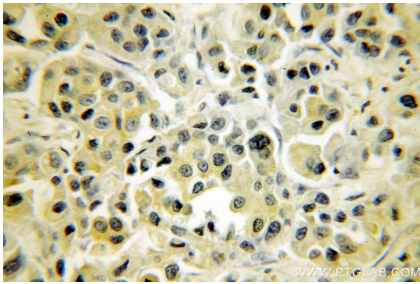
WB result of RELA, p65 antibody (10745-1-AP, 1:500) with si-Control and si-RELA, p65 transfected HeLa cells.



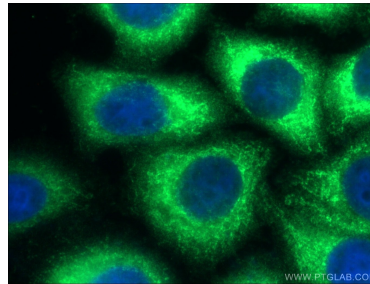
Various lysates were subjected to SDS PAGE followed by western blot with 10745-1-AP (NF- κ B p65 antibody) at dilution of 1:1000 incubated at room temperature for 1.5 hours.



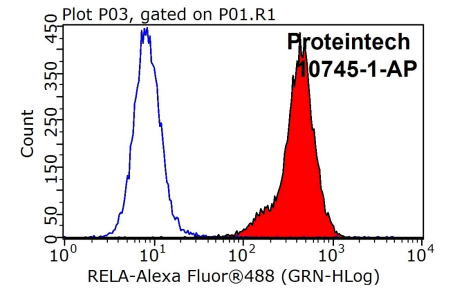
IP Result of anti-p65 (IP:10745-1-AP, 3 μ g; Detection:10745-1-AP 1:1000) with HeLa cells lysate 5000 μ g.



Immunohistochemical analysis of paraffin-embedded human breast cancer using 10745-1-AP (p65 antibody) at dilution of 1:100 (under 40x lens).



Immunofluorescent analysis of (-20°C Ethanol) fixed HepG2 cells using 10745-1-AP (p65; RELA antibody) at dilution of 1:100 and Alexa Fluor 488-conjugated AffiniPure Goat Anti-Rabbit IgG(H+L).



1 \times 10⁶ HeLa cells were stained with 0.2 μ g p65; RELA antibody (10745-1-AP, red) and control antibody (blue). Fixed with 90% MeOH blocked with 3% BSA (30 min). Alexa Fluor 488-conjugated AffiniPure Goat Anti-Rabbit IgG(H+L) with dilution 1:1000.