

For Research Use Only

14-3-3 Sigma Polyclonal antibody, PBS Only

Catalog Number: 10622-1-PBS



Basic Information

Catalog Number:

10622-1-PBS

Size:

100ug, Concentration: 1 mg/ml by Nanodrop;

Source:

Rabbit

Isotype:

IgG

Immunogen Catalog Number:

AG0973

GenBank Accession Number:

BC002995

GeneID (NCBI):

2810

UNIPROT ID:

P31947

Full Name:

stratifin

Calculated MW:

28 kDa

Observed MW:

28-30 kDa

Purification Method:

Antigen affinity purification

Applications

Tested Applications:

WB, IHC, Indirect ELISA

Species Specificity:

human, mouse

Background Information

14-3-3 Sigma is a member 14-3-3 family of highly conserved proteins participating in diverse cellular processes including cell cycle progression. It is exclusively present in various epithelial cells, and alternatively named as human epithelial marker (HEM), or stratifin. Alteration of its expression has been linked to cancer.

Storage

Storage:

Store at -80°C.

Storage Buffer:

PBS Only

For technical support and original validation data for this product please contact:

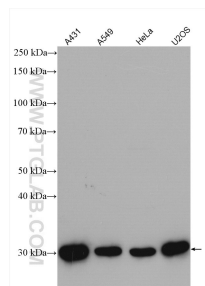
T: 1 (888) 4PTGLAB (1-888-478-4522) (toll free in USA), or 1(312) 455-8498 (outside USA)

E: proteintech@ptglab.com

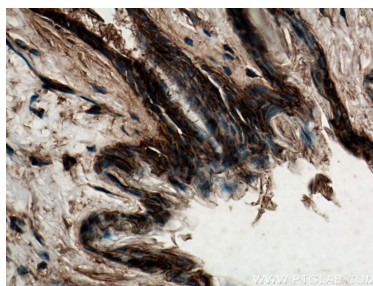
W: ptglab.com

This product is exclusively available under Proteintech Group brand and is not available to purchase from any other manufacturer.

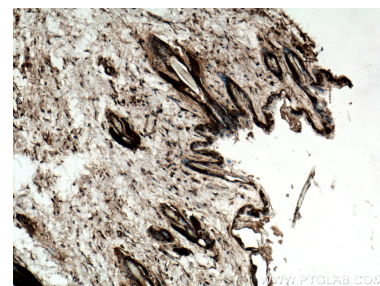
Selected Validation Data



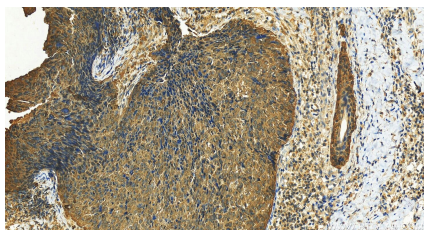
Various lysates were subjected to SDS PAGE followed by western blot with 10622-1-AP (14-3-3 sigma antibody) at dilution of 1:10000 incubated at room temperature for 1.5 hours. This data was developed using the same antibody clone with 10622-1-PBS in a different storage buffer formulation.



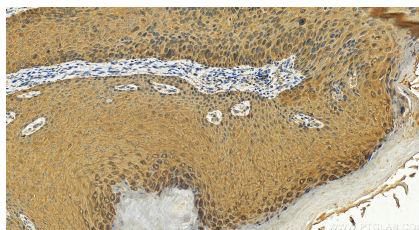
Immunohistochemical analysis of paraffin-embedded mouse skin tissue slide using 10622-1-AP (14-3-3 sigma antibody) at dilution of 1:500 (under 40x lens). This data was developed using the same antibody clone with 10622-1-PBS in a different storage buffer formulation.



Immunohistochemical analysis of paraffin-embedded mouse skin tissue slide using 10622-1-AP (14-3-3 sigma antibody) at dilution of 1:500 (under 10x lens). This data was developed using the same antibody clone with 10622-1-PBS in a different storage buffer formulation.



Immunohistochemical analysis of paraffin-embedded human bowen disease slide using 10622-1-AP (14-3-3 Sigma antibody) at dilution of 1:2000 (under 20x lens). Heat mediated antigen retrieval with Tris-EDTA buffer (pH 9.0). This data was developed using the same antibody clone with 10622-1-PBS in a different storage buffer formulation.



Immunohistochemical analysis of paraffin-embedded human bowen disease slide using 10622-1-AP (14-3-3 Sigma antibody) at dilution of 1:2000 (under 20x lens). Heat mediated antigen retrieval with Tris-EDTA buffer (pH 9.0). This data was developed using the same antibody clone with 10622-1-PBS in a different storage buffer formulation.