

For Research Use Only

# Chromogranin A Polyclonal antibody

Catalog Number: 10529-1-AP

18 Publications



## Basic Information

<b>Catalog Number:</b> 10529-1-AP	<b>GenBank Accession Number:</b> BC006459	<b>Purification Method:</b> Antigen affinity purification
<b>Size:</b> 150ul , Concentration: 400 ug/ml by Nanodrop and 253 ug/ml by Bradford method using BSA as the standard;	<b>GeneID (NCBI):</b> 1113	<b>Recommended Dilutions:</b> WB 1:500-1:2000 IHC 1:500-1:2000 IF-P 1:200-1:800
<b>Source:</b> Rabbit	<b>UNIPROT ID:</b> P10645	
<b>Isotype:</b> IgG	<b>Full Name:</b> chromogranin A (parathyroid secretory protein 1)	
<b>Immunogen Catalog Number:</b> AG0807	<b>Calculated MW:</b> 51 kDa	
	<b>Observed MW:</b> 70 kDa	

## Applications

### Tested Applications:

WB, IHC, IF-P, ELISA

### Cited Applications:

WB, IHC, IF

### Species Specificity:

human, mouse, rat

### Cited Species:

human, mouse, rat

**Note-IHC: suggested antigen retrieval with TE buffer pH 9.0; (\*) Alternatively, antigen retrieval may be performed with citrate buffer pH 6.0**

### Positive Controls:

WB : PC-12 cells,

IHC : human lung cancer tissue, human colon tissue, human pancreas tissue

IF-P: mouse pancreas tissue, mouse small intestine tissue

## Background Information

Chromogranin A is a member of the granin family of neuroendocrine secretory proteins. It is located in secretory vesicles of neurons and endocrine cells. Chromogranin A is the precursor to several functional peptides including vasostatin, pancreastatin, catestatin and parastatin. These peptides negatively modulate the neuroendocrine function of the releasing cell (autocrine) or nearby cells (paracrine). CgA is one of the most used tumor markers in NET's (neuroendocrine tumors), and elevated CgA concentrations have been demonstrated in serum or plasma of patients with different types of these tumors.

## Notable Publications

Author	Pubmed ID	Journal	Application
Qiong Wang	36088396	Cell Biosci	WB
Azita Monazzam	32884006	Sci Rep	WB
Jinzhao Bai	36058152	Biomed Pharmacother	IF

## Storage

### Storage:

Store at -20°C. Stable for one year after shipment.

### Storage Buffer:

PBS with 0.02% sodium azide and 50% glycerol pH 7.3.

Aliquoting is unnecessary for -20°C storage

\*\*\* 20ul sizes contain 0.1% BSA

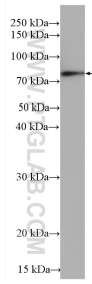
For technical support and original validation data for this product please contact:

T: 1 (888) 4PTGLAB (1-888-478-4522) (toll free in USA), or 1(312) 455-8498 (outside USA)

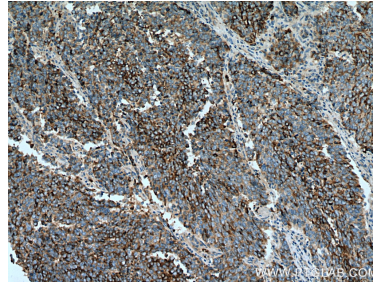
E: proteintech@ptglab.com  
W: ptglab.com

This product is exclusively available under Proteintech Group brand and is not available to purchase from any other manufacturer.

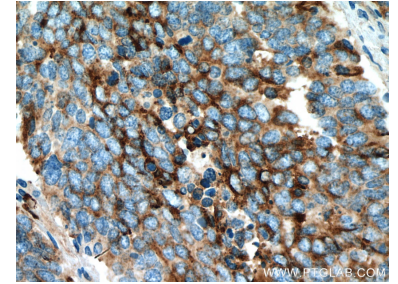
## Selected Validation Data



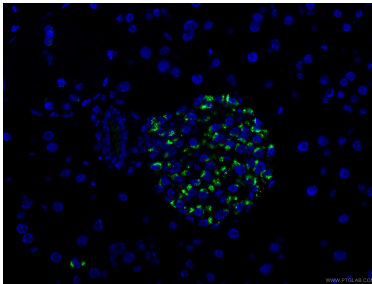
PC-12 cells were subjected to SDS PAGE followed by western blot with 10529-1-AP (Chromogranin A antibody) at dilution of 1:1000 incubated at room temperature for 1.5 hours.



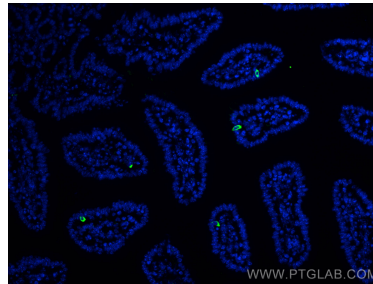
Immunohistochemical analysis of paraffin-embedded human lung cancer tissue slide using 10529-1-AP (Chromogranin A antibody) at dilution of 1:1000 (under 10x lens). Heat mediated antigen retrieval with Tris-EDTA buffer (pH 9.0).



Immunohistochemical analysis of paraffin-embedded human lung cancer tissue slide using 10529-1-AP (Chromogranin A antibody) at dilution of 1:1000 (under 40x lens). Heat mediated antigen retrieval with Tris-EDTA buffer (pH 9.0).



Immunofluorescent analysis of (4% PFA) fixed mouse pancreas tissue using 10529-1-AP (Chromogranin A antibody), at dilution of 1:400 and CoraLite®488-Conjugated Goat Anti-Rabbit IgG(H+L).



Immunofluorescent analysis of (4% PFA) fixed paraffin-embedded mouse small intestine tissue using Chromogranin A antibody (10529-1-AP) at dilution of 1:200 and CoraLite®488-Conjugated Goat Anti-Rabbit IgG(H+L) (SA00013-2). Heat mediated antigen retrieval with Tris-EDTA buffer (pH 9.0).