

For Research Use Only

transgelin/SM22 Polyclonal antibody

Catalog Number:10493-1-AP

Featured Product

146 Publications



Basic Information

Catalog Number: 10493-1-AP	GenBank Accession Number: BC004927	Purification Method: Antigen affinity purification
Size: 150ul , Concentration: 750 ug/ml by Nanodrop;	GeneID (NCBI): 6876	Recommended Dilutions: WB 1:5000-1:50000 IHC 1:50-1:500 IF-P 1:200-1:800 IF-Fro 1:50-1:500
Source: Rabbit	UNIPROT ID: Q01995	
Isotype: IgG	Full Name: transgelin	
Immunogen Catalog Number: AG0764	Calculated MW: 22 kDa	
	Observed MW: 19-22 kDa	

Applications

Tested Applications:
WB, IHC, IF-P, IF-Fro, ELISA

Cited Applications:
WB, IHC, IF

Species Specificity:
human, mouse, rat

Cited Species:
human, mouse, rat, canine, bovine

Note-IHC: suggested antigen retrieval with TE buffer pH 9.0; (*) Alternatively, antigen retrieval may be performed with citrate buffer pH 6.0

Positive Controls:

WB : mouse colon tissue, Caco-2 cells, human colon tissue, mouse stomach tissue, rat colon tissue

IHC : mouse heart tissue, human colon cancer tissue, human heart tissue, mouse brain tissue

IF-P: mouse heart tissue,

IF-Fro : mouse heart tissue,

Background Information

The transgelin family is a protein group belonging to the 22kd actin-related calponin superfamily. Of all three isoforms, transgelin 1 is the best characterized. Transgelin 1, or SM22alpha, is a specific marker for differentiated smooth muscle cells. Transgelin 2, also known as SM22 beta, is expressed by both smooth and non-smooth muscle cells in a temporally and spatially regulated pattern. Transgelin 3, also known as NP25, is only found in highly differentiated neuronal cells. This antibody was generated against full-length transgelin 1 protein. It can cross-react with other two transgenes based on the sequence similarity.

Notable Publications

Author	Pubmed ID	Journal	Application
Zhuqing Li	34607159	Redox Biol	IF
Yan Yan	36068532	Reprod Biol Endocrinol	IHC,IF
Tao Li	31499136	Neurosci Lett	WB

Storage

Storage:
Store at -20°C. Stable for one year after shipment.
Storage Buffer:
PBS with 0.02% sodium azide and 50% glycerol, pH7.3
Aliquoting is unnecessary for -20°C storage

*** 20ul sizes contain 0.1% BSA

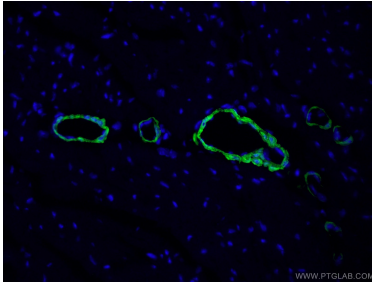
For technical support and original validation data for this product please contact:

T: 1 (888) 4PTGLAB (1-888-478-4522) (toll free in USA), or 1(312) 455-8498 (outside USA)

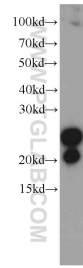
E: proteintech@ptglab.com
W: ptglab.com

This product is exclusively available under Proteintech Group brand and is not available to purchase from any other manufacturer.

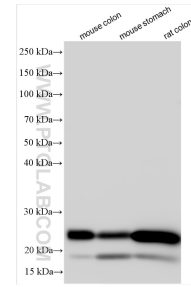
Selected Validation Data



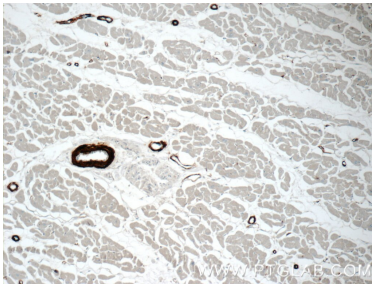
Immunofluorescent analysis of (4% PFA) fixed mouse heart tissue using 10493-1-AP (transgelin/SM22 antibody) at dilution of 1:50 and Alexa Fluor 488-Conjugated AffiniPure Goat Anti-Rabbit IgG(H+L).



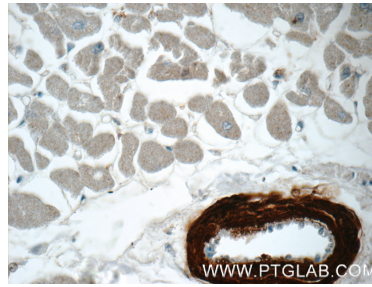
mouse colon tissue were subjected to SDS PAGE followed by western blot with 10493-1-AP (transgelin/SM22 antibody) at dilution of 1:1000 incubated at room temperature for 1.5 hours.



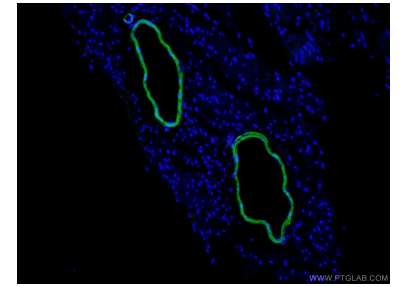
Various lysates were subjected to SDS PAGE followed by western blot with 10493-1-AP (transgelin/SM22 antibody) at dilution of 1:10000 incubated at room temperature for 1.5 hours.



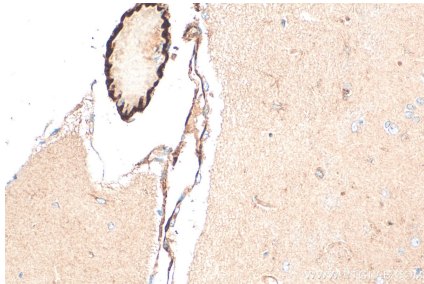
Immunohistochemical analysis of paraffin-embedded human heart tissue slide using 10493-1-AP (transgelin/SM22 antibody) at dilution of 1:50 (under 10x lens).



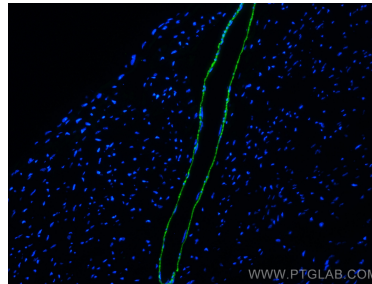
Immunohistochemical analysis of paraffin-embedded human heart tissue slide using 10493-1-AP (transgelin/SM22 antibody) at dilution of 1:50 (under 40x lens).



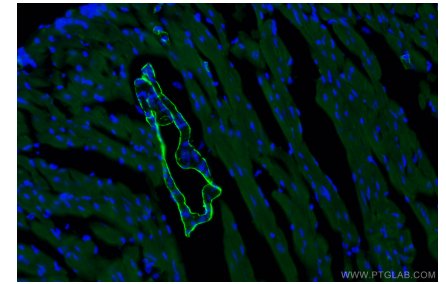
Immunofluorescent analysis of (4% PFA) fixed mouse heart tissue using 10493-1-AP (transgelin/SM22 antibody) at dilution of 1:50 and Alexa Fluor 488-conjugated AffiniPure Goat Anti-Rabbit IgG(H+L).



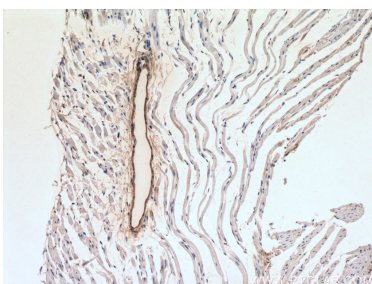
Immunohistochemical analysis of paraffin-embedded mouse brain tissue slide using 10493-1-AP (transgelin/SM22 antibody) at dilution of 1:2000 (under 40x lens). Heat mediated antigen retrieval with Tris-EDTA buffer (pH 9.0).



Immunofluorescent analysis of (4% PFA) fixed mouse heart tissue using transgelin/SM22 antibody (10493-1-AP) at dilution of 1:400 and CoraLite®488-Conjugated AffiniPure Goat Anti-Rabbit IgG(H+L).



Immunofluorescent analysis of (4% PFA) fixed frozen OCT-embedded mouse heart tissue using 10493-1-AP (transgelin/SM22 antibody) at dilution of 1:200 and CoraLite®488-Conjugated AffiniPure Goat Anti-Rabbit IgG(H+L).



Immunohistochemical analysis of paraffin-embedded mouse heart tissue slide using 10493-1-AP (transgelin/SM22 antibody) at dilution of 1:200 (under 10x lens. Heat mediated antigen retrieval with Tris-EDTA buffer (pH 9.0).