

For Research Use Only

JTV1 Polyclonal antibody

Catalog Number: 10424-1-AP

Featured Product

22 Publications



Basic Information

Catalog Number:

10424-1-AP

Size:

150ul, Concentration: 600 µg/ml by Nanodrop;

Source:

Rabbit

Isotype:

IgG

Immunogen Catalog Number:

AG0675

GenBank Accession Number:

BC002853

GeneID (NCBI):

7965

Full Name:

JTV1 gene

Calculated MW:

36 kDa

Observed MW:

35 kDa

Purification Method:

Antigen affinity purification

Recommended Dilutions:

WB 1:500-1:1000

IP 0.5-4.0 µg for IP and 1:500-1:2000 for WB

IHC 1:20-1:200

IF 1:10-1:100

Applications

Tested Applications:

IF, IHC, IP, WB, ELISA

Cited Applications:

CoIP, IF, IHC, WB

Species Specificity:

human, mouse, rat

Cited Species:

human, rat, mouse

Note-IHC: suggested antigen retrieval with TE buffer pH 9.0; (*) Alternatively, antigen retrieval may be performed with citrate buffer pH 6.0

Positive Controls:

WB: HeLa cells, HepG2 cells, NIH/3T3 cells, K-562 cells, mouse liver tissue, L02 cells, rat liver tissue

IP: HeLa cells,

IHC: human testis tissue, human kidney tissue, mouse cerebellum tissue, mouse testis tissue, human cerebellum tissue

IF: HeLa cells, HepG2 cells

Background Information

JTV1, also named p38, AIMP2, was first known as a factor associated with macromolecular protein complex, which consists of several different aminoacyl-tRNA synthetases. JTV1 is a scaffold protein required for the assembly and stability of the multi-tRNA synthetase complex. JTV1 could act as a mediator of TGF-beta signaling and its functional importance in the control of MYC during lung differentiation. Blocks MDM2-mediated ubiquitination and degradation of p53/TP53. Functions as a proapoptotic factor. This is a rabbit polyclonal antibody raised against full-length of JTV1. There are two isoforms of JTV1 with MW about 27 kDa and 35 kDa,

Notable Publications

Author	Pubmed ID	Journal	Application
Ko Han Seok HS	20823226	Proc Natl Acad Sci U S A	WB
Krishnendu Khan	36037331	Proc Natl Acad Sci U S A	WB
Hyojung Kim	28972555	Int J Mol Sci	WB

Storage

Storage:

Store at -20°C. Stable for one year after shipment.

Storage Buffer:

PBS with 0.02% sodium azide and 50% glycerol pH 7.3.

Aliquoting is unnecessary for -20°C storage

*** 20ul sizes contain 0.1% BSA

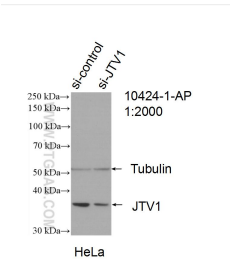
For technical support and original validation data for this product please contact:

T: 1 (888) 4PTGLAB (1-888-478-4522) (toll free in USA), or 1(312) 455-8498 (outside USA)

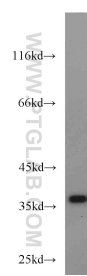
E: proteintech@ptglab.com
W: ptglab.com

This product is exclusively available under Proteintech Group brand and is not available to purchase from any other manufacturer.

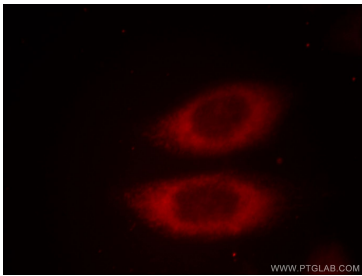
Selected Validation Data



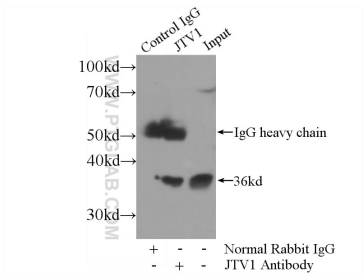
WB result of JTV1 antibody (10424-1-AP; 1:2000; incubated at room temperature for 1.5 hours) with sh-Control and sh-JTV1 transfected HeLa cells.



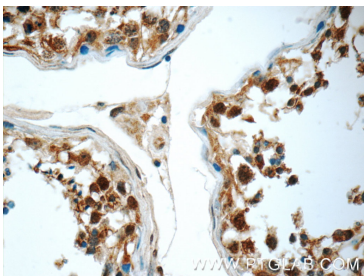
HeLa cells were subjected to SDS PAGE followed by western blot with 10424-1-AP (JTV1 antibody) at dilution of 1:1000 incubated at room temperature for 1.5 hours.



Immunofluorescent analysis of HeLa cells, using JTV1 antibody 10424-1-AP at 1:25 dilution and Rhodamine-labeled goat anti-rabbit IgG (red).



IP Result of anti-JTV1 (IP:10424-1-AP, 3ug; Detection:10424-1-AP 1:1000) with HeLa cells lysate 800ug.



Immunohistochemical analysis of paraffin-embedded human testis tissue slide using 10424-1-AP (JTV1 Antibody) at dilution of 1:50 (under 40x lens).