

For Research Use Only

RPA2 Polyclonal antibody

Catalog Number: 10412-1-AP **20 Publications**



Basic Information

Catalog Number:

10412-1-AP

Size:

150ul, Concentration: 600 ug/ml by Nanodrop;

Source:

Rabbit

Isotype:

IgG

Immunogen Catalog Number:

AG0690

GenBank Accession Number:

BC001630

GeneID (NCBI):

6118

UNIPROT ID:

P15927

Full Name:

replication protein A2, 32kDa

Calculated MW:

29 kDa

Observed MW:

32 kDa

Purification Method:

Antigen affinity purification

Recommended Dilutions:

WB 1:1000-1:6000

IP 0.5-4.0 ug for 1.0-3.0 mg of total protein lysate

IHC 1:20-1:200

IF/ICC 1:50-1:500

Applications

Tested Applications:

WB, IHC, IF/ICC, IP, ELISA

Cited Applications:

WB, IHC, IF, IP, ChIP

Species Specificity:

human, mouse, rat

Cited Species:

human, mouse

Note-IHC: suggested antigen retrieval with TE buffer pH 9.0; (*) Alternatively, antigen retrieval may be performed with citrate buffer pH 6.0

Positive Controls:

WB: HEK-293 cells, mouse brain tissue, HeLa cells, SH-SY5Y cells

IP: mouse kidney tissue,

IHC: human gliomas tissue,

IF/ICC: A431 cells,

Background Information

RPA2, a subunit of the heterotrimeric replication protein A (RPA) complex, is overexpressed in various cancers. RPA2 is a major target for upstream kinases, including CDKs and the three PIKKs (ATR, ataxia-telangiectasia mutated [ATM], and DNA-PK). RPA2 comprises multiple critical Ser/Tr residues that are phosphorylated in sequential order in response to genotoxic stress.

Notable Publications

Author	Pubmed ID	Journal	Application
Tao Zhang	36050397	Nat Commun	WB
Jiao Zhao	35597237	Mol Cell	WB
Yushan Li	35341968	J Genet Genomics	IF

Storage

Storage:

Store at -20°C. Stable for one year after shipment.

Storage Buffer:

PBS with 0.02% sodium azide and 50% glycerol, pH7.3

Aliquoting is unnecessary for -20°C storage

***** 20ul sizes contain 0.1% BSA**

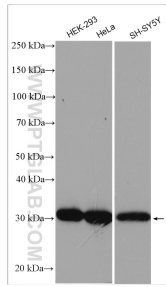
For technical support and original validation data for this product please contact:

T: 1 (888) 4PTGLAB (1-888-478-4522) (toll free in USA), or 1(312) 455-8498 (outside USA)

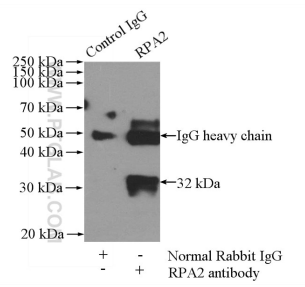
E: proteintech@ptglab.com
W: ptglab.com

This product is exclusively available under Proteintech Group brand and is not available to purchase from any other manufacturer.

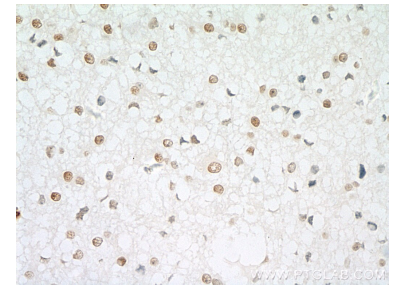
Selected Validation Data



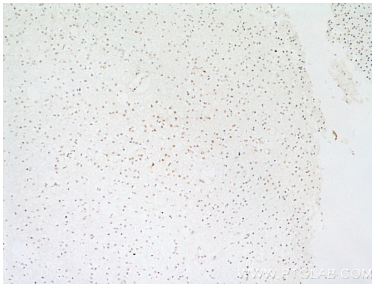
Various lysates were subjected to SDS PAGE followed by western blot with 10412-1-Ap (RPA2 antibody) at dilution of 1:3000 incubated at room temperature for 1.5 hours.



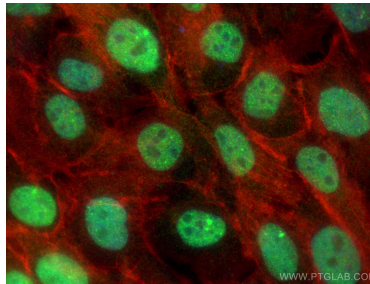
IP result of anti-RPA2 (IP:10412-1-Ap, 4 μ g; Detection:10412-1-Ap 1:1000) with mouse kidney tissue lysate 4000 μ g.



Immunohistochemical analysis of paraffin-embedded human gliomas tissue slide using 10412-1-Ap (RPA2 antibody) at dilution of 1:100 (under 40 \times lens)..



Immunohistochemical analysis of paraffin-embedded human gliomas tissue slide using 10412-1-Ap (RPA2 antibody) at dilution of 1:100 (under 10 \times lens)..



Immunofluorescent analysis of (4% PFA) fixed A431 cells using RPA2 antibody (10412-1-Ap) at dilution of 1:200 and CoraLite@488-Conjugated AffiniPure Goat Anti-Rabbit IgG(H+L), CL594-phalloidin (red).