

For Research Use Only

Emerin Polyclonal antibody

Catalog Number: 10351-1-AP

Featured Product

33 Publications



Basic Information

Catalog Number:

10351-1-AP

Size:

150ul, Concentration: 700 ug/ml by Nanodrop;

Source:

Rabbit

Isotype:

IgG

Immunogen Catalog Number:

AG0236

GenBank Accession Number:

BC000738

GeneID (NCBI):

2010

UNIPROT ID:

P50402

Full Name:

emerin

Calculated MW:

34 kDa

Observed MW:

35 kDa

Purification Method:

Antigen affinity purification

Recommended Dilutions:

WB: 1:2000-1:10000

IP: 0.5-4.0 ug for 1.0-3.0 mg of total protein lysate

IHC: 1:500-1:2000

IF/ICC: 1:50-1:500

FC (Intra): 0.40 ug per 10⁶ cells in a 100 µl suspension

Applications

Tested Applications:

WB, IHC, IF/ICC, FC (Intra), IP, ELISA

Cited Applications:

WB, IHC, IF, IP, CoIP

Species Specificity:

human, mouse

Cited Species:

human, mouse

Positive Controls:

WB: HEK-293 cells, A431 cells, COLO 320 cells, HeLa cells, HepG2 cells, Jurkat cells, MCF-7 cells

IP: mouse skeletal muscle tissue,

IHC: human thyroid cancer tissue,

IF/ICC: HeLa cells,

FC (Intra): HEK-293T cells,

Note-IHC: suggested antigen retrieval with TE buffer pH 9.0; (*) Alternatively, antigen retrieval may be performed with citrate buffer pH 6.0

Background Information

Emerin (Emery-Dreifuss muscular dystrophy) (EMD or EDMD), a serine-rich nuclear membrane protein, is a member of the nuclear lamina-associated protein family. EMD may mediate membrane anchorage to the cytoskeleton by stabilizing and promoting the formation of a nuclear actin cortical network. Defects in EMD gene are the cause of Emery-Dreifuss muscular dystrophy type 1 (EDMD1), a degenerative myopathy characterized by weakness and atrophy of muscle without involvement of the nervous system, early contractures of the elbows Achilles tendons and spine, and cardiomyopathy associated with cardiac conduction defects. EMD inhibits beta-catenin activity by preventing its accumulation in the nucleus and is involved in HIV-1 infection.

Notable Publications

Author	Pubmed ID	Journal	Application
Shiwei Liu	30232450	Nature	IF
Dean J Procter	32908309	Nature	WB,IF
Christelle Lenain	26354777	Carcinogenesis	WB,IF

Storage

Storage:

Store at -20°C. Stable for one year after shipment.

Storage Buffer:

PBS with 0.02% sodium azide and 50% glycerol, pH7.3

Aliquoting is unnecessary for -20°C storage

*** 20ul sizes contain 0.1% BSA

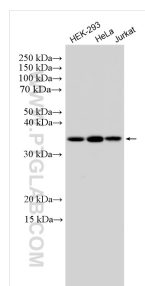
For technical support and original validation data for this product please contact:

T: 1 (888) 4PTGLAB (1-888-478-4522) (toll free in USA), or 1(312) 455-8498 (outside USA)

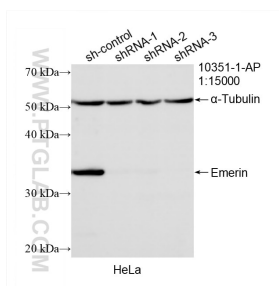
E: proteintech@ptglab.com
W: ptglab.com

This product is exclusively available under Proteintech Group brand and is not available to purchase from any other manufacturer.

Selected Validation Data

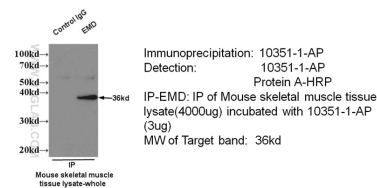


Various lysates were subjected to SDS PAGE followed by western blot with 10351-1-AP (Emerin antibody) at dilution of 1:5000 incubated at room temperature for 1.5 hours.

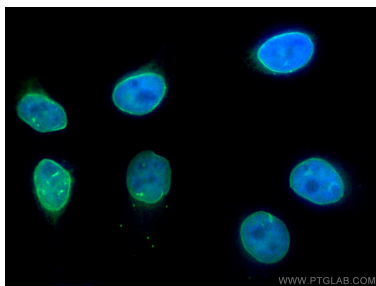


WB result of Emerin antibody (10351-1-AP; 1:15000; incubated at room temperature for 1.5 hours) with sh-Control and sh-Emerin transfected HeLa cells.

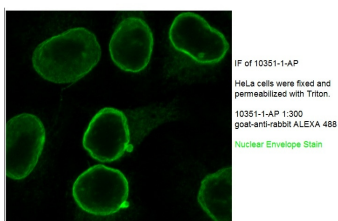
IP & WB of 10351-1-AP with Mouse skeletal muscle tissue



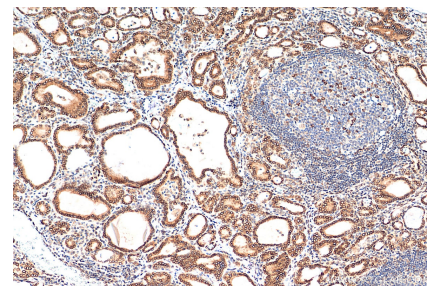
IP result of EMD antibody (10351-1-AP for IP and Detection) with mouse skeletal muscle tissue lysate.



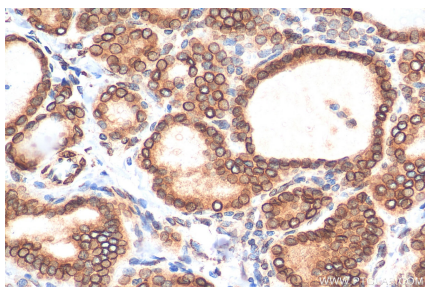
Immunofluorescent analysis of (4% PFA) fixed HeLa cells using Emerin antibody (10351-1-AP) at dilution of 1:200 and CoraLite® 488-Conjugated AffiniPure Goat Anti-Rabbit IgG(H+L).



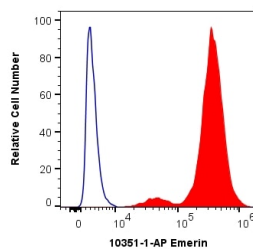
IF result of anti-EMD (10351-1-AP) in HeLa cell by Dr. Ralph Kehlenbach.



Immunohistochemical analysis of paraffin-embedded human thyroid cancer tissue slide using 10351-1-AP (Emerin antibody) at dilution of 1:1000 (under 10x lens). Heat mediated antigen retrieval with Tris-EDTA buffer (pH 9.0).



Immunohistochemical analysis of paraffin-embedded human thyroid cancer tissue slide using 10351-1-AP (Emerin antibody) at dilution of 1:1000 (under 40x lens). Heat mediated antigen retrieval with Tris-EDTA buffer (pH 9.0).



1X10⁶ HEK-293T cells were intracellularly stained with 0.4 ug Anti-Human Emerin (10351-1-AP) and CoraLite® 488-Conjugated AffiniPure Goat Anti-Rabbit IgG(H+L) at dilution 1:1000 (red), or 0.4 ug Isotype Control. Cells were fixed with 4% PFA and permeabilized with Flow Cytometry Perm Buffer.