

For Research Use Only

CDC37 Polyclonal antibody, PBS Only

Catalog Number: 10218-1-PBS

Featured Product



Basic Information

Catalog Number:

10218-1-PBS

Size:

100ug, Concentration: 1 mg/ml by Nanodrop;

Source:

Rabbit

Isotype:

IgG

Immunogen Catalog Number:

AG0267

GenBank Accession Number:

BC000083

GeneID (NCBI):

11140

UNIPROT ID:

Q16543

Full Name:

cell division cycle 37 homolog (S. cerevisiae)

Calculated MW:

44 kDa

Observed MW:

45-50 kDa

Purification Method:

Antigen affinity purification

Applications

Tested Applications:

WB, IHC, IF/ICC, FC (Intra), IP, Indirect ELISA

Species Specificity:

human, mouse, monkey

Background Information

Cdc (cell division control) family of proteins are regulatory proteins involved in the processes of cell cycle and proliferation. CDC37, migrated as a protein of 50 kDa in SDS PAGE, is a co-chaperone protein that recruits several immature client kinases to Hsp90 for proper folding. It functions in association with Hsp90, although little is known of its mechanism of action or where it fits into a folding pathway involving other Hsp90 cochaperones. CDC37 up-regulation is a common early event in some localized human cancers. But, the effect of CDC37 dysregulation in human cells is unclear.

Storage

Storage:

Store at -80°C.

Storage Buffer:

PBS Only

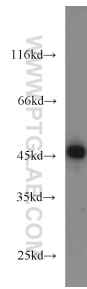
For technical support and original validation data for this product please contact:

T: 1 (888) 4PTGLAB (1-888-478-4522) (toll free in USA), or 1(312) 455-8498 (outside USA)

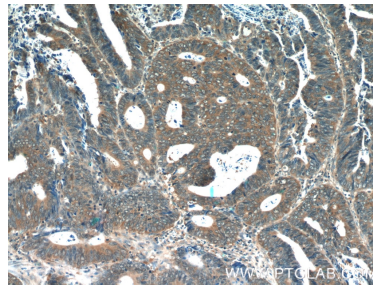
E: proteintech@ptglab.com
W: ptglab.com

This product is exclusively available under Proteintech Group brand and is not available to purchase from any other manufacturer.

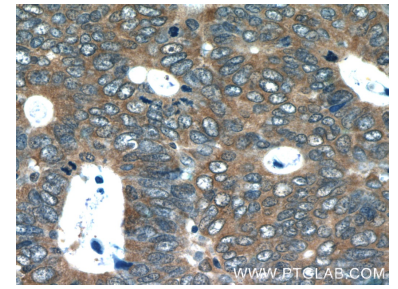
Selected Validation Data



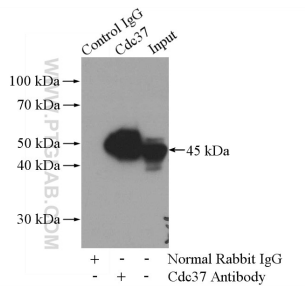
HEK-293 cells were subjected to SDS PAGE followed by western blot with 10218-1-AP (CDC37 antibody) at dilution of 1:1000 incubated at room temperature for 1.5 hours. This data was developed using the same antibody clone with 10218-1-PBS in a different storage buffer formulation.



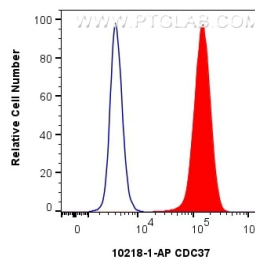
Immunohistochemical analysis of paraffin-embedded human colon cancer tissue slide using 10218-1-AP (CDC37 Antibody) at dilution of 1:50 (under 10x lens). This data was developed using the same antibody clone with 10218-1-PBS in a different storage buffer formulation.



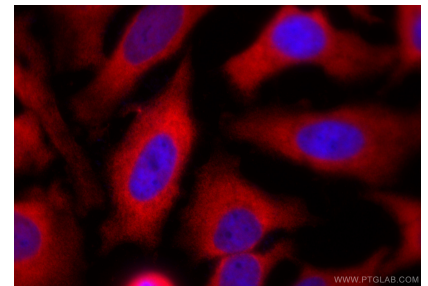
Immunohistochemical analysis of paraffin-embedded human colon cancer tissue slide using 10218-1-AP (CDC37 Antibody) at dilution of 1:50 (under 40x lens). This data was developed using the same antibody clone with 10218-1-PBS in a different storage buffer formulation.



IP result of anti-CDC37 (IP:10218-1-AP, 4ug; Detection:10218-1-AP 1:1000) with HEK-293 cells lysate 3200ug. This data was developed using the same antibody clone with 10218-1-PBS in a different storage buffer formulation.



1×10^6 MCF-7 cells were intracellularly stained with 0.8 ug CDC37 Polyclonal antibody (10218-1-AP) and CoraLite®488-Conjugated AffiniPure Goat Anti-Rabbit IgG(H+L) (SA00013-2)(red), or 0.8 ug Rabbit IgG control Rabbit PolyAb (30000-0-AP) (blue). Cells were fixed with 4% PFA and permeabilized with Flow Cytometry Perm Buffer (PF00011-C). This data was developed using the same antibody clone with 10218-1-PBS in a different storage buffer formulation.



Immunofluorescent analysis of (-20°C Ethanol) fixed HeLa cells using CDC37 antibody (10218-1-AP) at dilution of 1:400 and CoraLite®594-Conjugated Goat Anti-Rabbit IgG(H+L) (SA00013-4). This data was developed using the same antibody clone with 10218-1-PBS in a different storage buffer formulation.