

For Research Use Only

# RAB6A Polyclonal antibody, PBS Only

Catalog Number: 10187-2-PBS

Featured Product



## Basic Information

**Catalog Number:**

10187-2-PBS

**Size:**

100ug, Concentration: 1 mg/ml by Nanodrop;

**Source:**

Rabbit

**Isotype:**

IgG

**Immunogen Catalog Number:**

AG0240

**GenBank Accession Number:**

BC003617

**GeneID (NCBI):**

5870

**UNIPROT ID:**

P20340

**Full Name:**

RAB6A, member RAS oncogene family

**Calculated MW:**

24 kDa

**Observed MW:**

24 kDa

**Purification Method:**

Antigen affinity purification

## Applications

**Tested Applications:**

WB, IF/ICC, IP, Indirect ELISA

**Species Specificity:**

human, mouse, rat

## Background Information

Members of the Rab subfamily of small GTPases play an important role in the regulation of intracellular transport routes. Rab6, localized to the Golgi apparatus, has been shown to be a regulator of membrane traffic from the Golgi apparatus towards the endoplasmic reticulum (ER). The expression of Rab6 is ubiquitous.

## Storage

**Storage:**

Store at -80°C.

**Storage Buffer:**

PBS Only

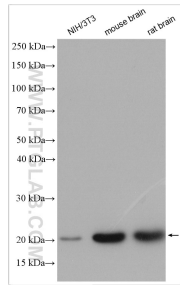
For technical support and original validation data for this product please contact:

T: 1 (888) 4PTGLAB (1-888-478-4522) (toll free in USA), or 1(312) 455-8498 (outside USA)

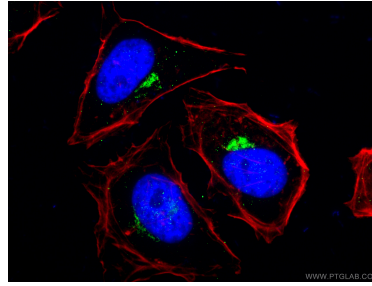
E: [proteintech@ptglab.com](mailto:proteintech@ptglab.com)  
W: [ptglab.com](http://ptglab.com)

This product is exclusively available under Proteintech Group brand and is not available to purchase from any other manufacturer.

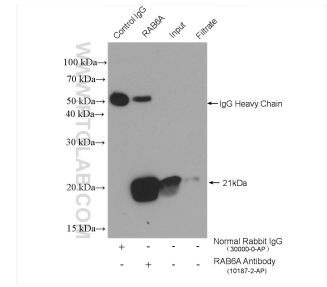
## Selected Validation Data



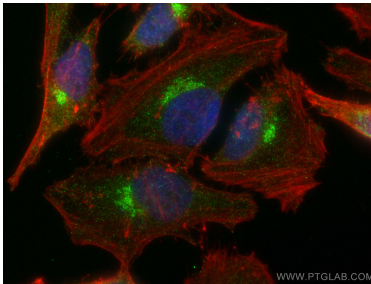
Various lysates were subjected to SDS PAGE followed by western blot with 10187-2-AP (RAB6A antibody) at dilution of 1:8000 incubated at room temperature for 1.5 hours. This data was developed using the same antibody clone with 10187-2-PBS in a different storage buffer formulation.



Immunofluorescent analysis of (4% PFA) fixed HeLa cells using 10187-2-AP (RAB6A antibody), at dilution of 1:200 and CoraLite@488-Conjugated AffiniPure Goat Anti-Rabbit IgG(H+L). F-actin is stained using CL555-phalloidin (red) and DNA is stained by DAPI (blue). This data was developed using the same antibody clone with 10187-2-PBS in a different storage buffer formulation.



IP result of anti-RAB6A (IP:10187-2-AP, 4ug; Detection:10187-2-AP 1:1000) with mouse brain tissue lysate 1840 ug. This data was developed using the same antibody clone with 10187-2-PBS in a different storage buffer formulation.



Immunofluorescent analysis of (4% PFA) fixed HeLa cells using RAB6A antibody (10187-2-AP) at dilution of 1:800 and CoraLite@488-Conjugated AffiniPure Goat Anti-Rabbit IgG(H+L), CL594-phalloidin (red). This data was developed using the same antibody clone with 10187-2-PBS in a different storage buffer formulation.