

Mitofilin Polyclonal antibody

Catalog Number: 10179-1-AP

Featured Product

76 Publications

Basic Information

Catalog Number:

10179-1-AP

Size:

150ul, Concentration: 350 µg/ml by Nanodrop;

Source:

Rabbit

Isotype:

IgG

Immunogen Catalog Number:

AG0102

GenBank Accession Number:

BC002412

GeneID (NCBI):

10989

UNIPROT ID:

Q16891

Full Name:

inner membrane protein, mitochondrial (mitofilin)

Calculated MW:

90 kDa

Observed MW:

80-90 kDa

Purification Method:

Antigen affinity purification

Recommended Dilutions:

WB 1:5000-1:50000

IP 0.5-4.0 µg for 1.0-3.0 mg of total protein lysate

IHC 1:50-1:500

IF 1:50-1:500

Applications

Tested Applications:

FC, IF, IHC, IP, WB, ELISA

Cited Applications:

CoIP, IF, IP, WB

Species Specificity:

human, mouse, rat

Cited Species:

human, rat, mouse, hamster

Positive Controls:

WB: COLO 320 cells, HepG2 cells, HEK-293 cells, HeLa cells, Raji cells, mouse brain tissue, MCF-7 cells, rat brain tissue

IP: Raji cells,

IHC: human breast cancer tissue,

IF: HeLa cells,

Note-IHC: suggested antigen retrieval with TE buffer pH 9.0; (*) Alternatively, antigen retrieval may be performed with citrate buffer pH 6.0

Background Information

IMMT (also known as mitofilin) is an inner mitochondrial membrane protein that is preferentially expressed in heart tissue and is commonly used as the marker for mitochondria. Mitofilin is known to be a critical organizer of mitochondrial cristae morphology and is indispensable for normal mitochondrial function. Three isoforms of mitofilin exist due to the alternative splicing. All three proteins of 87kD, 89kD and 80kD can be detected in immunoblot analysis with this antibody.

Notable Publications

Author	Pubmed ID	Journal	Application
Q E Xie	34571250	Mitochondrion	WB
Steven J Edwards	33195398	Front Mol Biosci	IF
Brendan Miller	36127429	Mol Psychiatry	WB,IP

Storage

Storage:

Store at -20°C. Stable for one year after shipment.

Storage Buffer:

PBS with 0.02% sodium azide and 50% glycerol pH 7.3.

Aliquoting is unnecessary for -20°C storage

*** 20ul sizes contain 0.1% BSA

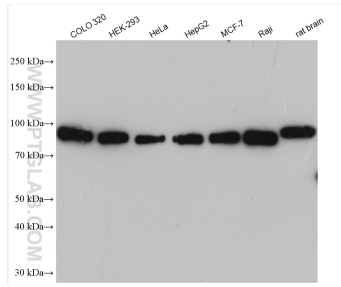
For technical support and original validation data for this product please contact:

T: 1 (888) 4PTGLAB (1-888-478-4522) (toll free in USA), or 1(312) 455-8498 (outside USA)

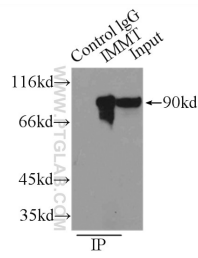
E: proteintech@ptglab.com
W: ptglab.com

This product is exclusively available under Proteintech Group brand and is not available to purchase from any other manufacturer.

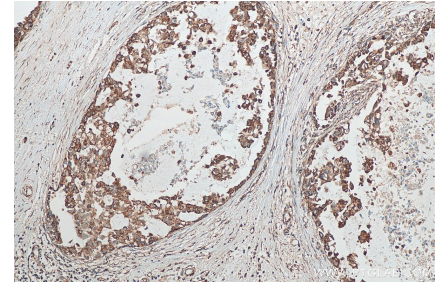
Selected Validation Data



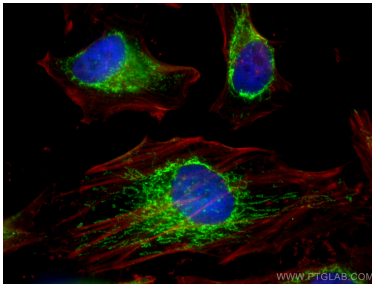
Various lysates were subjected to SDS PAGE followed by western blot with 10179-1-AP (Mitofilin antibody) at dilution of 1:15000 incubated at room temperature for 1.5 hours.



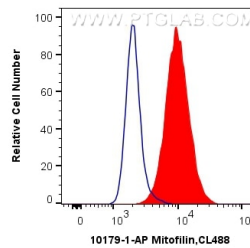
IP result of anti-Mitofilin (IP:10179-1-AP, 3ug; Detection:10179-1-AP 1:1000) with Raji cells lysate 3800ug.



Immunohistochemical analysis of paraffin-embedded human breast cancer tissue slide using 10179-1-AP (Mitofilin antibody) at dilution of 1:200 (under 10x lens). Heat mediated antigen retrieval with Tris-EDTA buffer (pH 9.0).



Immunofluorescent analysis of (4% PFA) fixed HeLa cells using Mitofilin antibody (10179-1-AP) at dilution of 1:200 and CoraLite®488-Conjugated AffiniPure Goat Anti-Rabbit IgG(H+L), CL594-Phalloidin (red).



1X10⁶ HEK-293T cells were intracellularly stained with 0.2 ug Anti-Human Mitofilin (10179-1-AP) and CoraLite®488-Conjugated AffiniPure Goat Anti-Rabbit IgG(H+L) at dilution 1:1000 (red), or 0.2 ug Control Antibody. Cells were fixed with 4% PFA and permeabilized with Flow Cytometry Perm Buffer (PF00011-C).