

# Proteintech's Solution for Cell Separations: Magnetic Beads and Cell Isolation Kits



The characterization of specific cell types and their use in various downstream applications requires that cells of interest can be isolated from a heterogeneous cell population such as PBMC or whole blood.

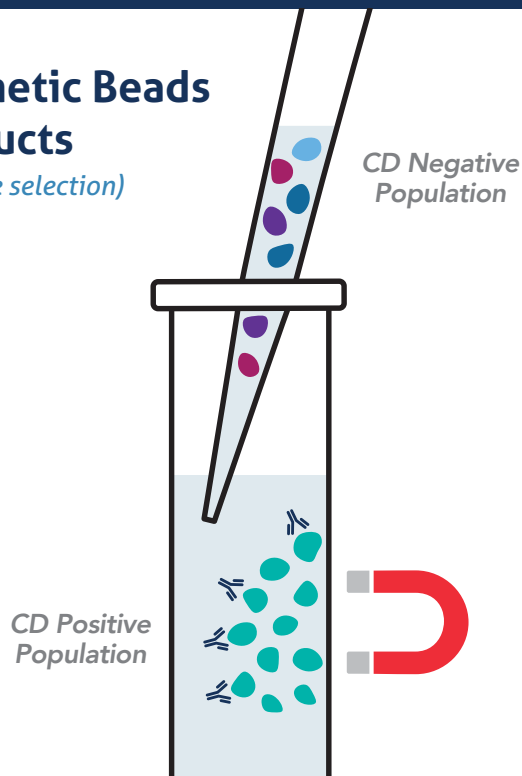
Simply incubate your heterogeneous cell suspension with Proteintech's magnetic cell separation beads to discover quick, easy, column-free cell depletions and isolations, resulting in a high purity homogeneous cell population of interest!

## Discover Magnetic Cell Separation Products

- Proteintech's antibody quality and in-house validation you know and trust.
- Routinely tested in peripheral blood mononuclear cells and whole blood.
- User-friendly, fast and easy to use compared to cell separation by fluorescence activated cell sorting (FACS).
- Tested with multiple magnets; you can use the magnet you already have!

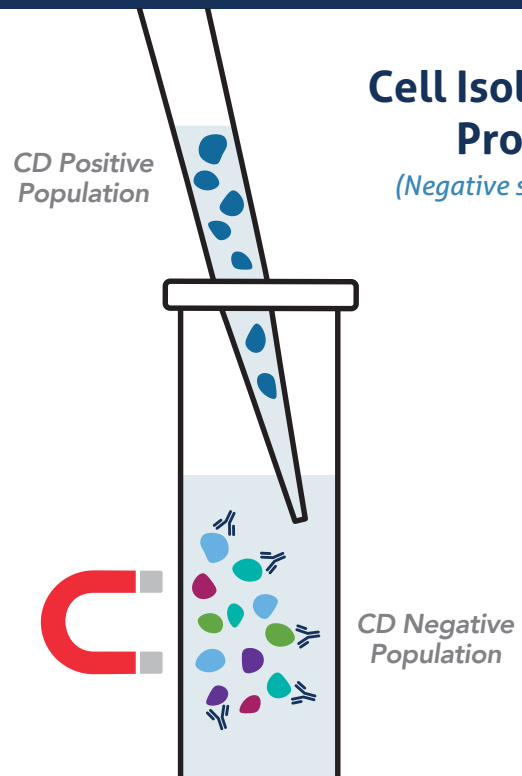
### Magnetic Beads Products

*(Positive selection)*



### Cell Isolation Products

*(Negative selection)*

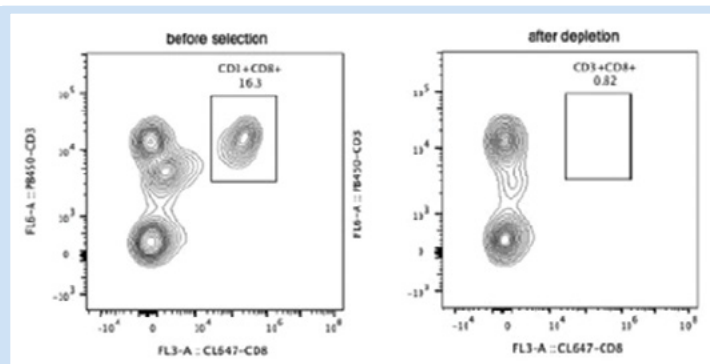


## Magnetic Beads Products

Product	Product Type	Size
Streptavidin	Magnetic Beads	0.1mL or 1mL
Human CD3	Magnetic Beads or Kit	10 or 100 tests
Human CD4	Magnetic Beads or Kit	10 or 100 tests
Human CD8	Magnetic Beads or Kit	10 or 100 tests
Human CD19	Magnetic Beads or Kit	10 or 100 tests

## High Purity Cell Depletions

Following depletion of CD8+ cells, supernatant cell suspension was stained with PB450-CD3 (clone: HIT3a) and CL647-CD8 (clone: OKT8) antibodies. CD45 positive cells are gated in the analysis. Left panel: CD3+CD8+ cells before selection. Right panel: CD3+CD8+ cells after depletion. Human CD8 Magnetic Beads are tested using PBMC from three different donors.



## Cell Isolation Products

Product	Catalog No.	Size
Mouse Lineage Depletion Kit	KMS301	10 or 100 tests
Human CD4 Isolation Kit	KMS302	10 or 100 tests
Human CD8 Isolation Kit	KMS303	10 or 100 tests
Human CD3 Isolation Kit	KMS309	10 or 100 tests
Human CD4 Memory T Cell Isolation Kit	KMS305	10 or 100 tests
Human CD8 Memory T Cell Isolation Kit	KMS307	10 or 100 tests
Human NK Cell Isolation Kit	KMS308	10 or 100 tests

## Highly Enriched Populations

Following cell separation, cell suspension was stained with FITC-CD45 (F10-89-4), PE-CD3 (UCHT1) and APC-CD8 (OKT8) antibodies. All CD45+ cells are gated in the analysis. Left panel: CD3+CD8+ cells before selection. Right panel: CD3+CD8+ cells after selection. Human CD4 selection kit is tested using PBMC from three donors.

