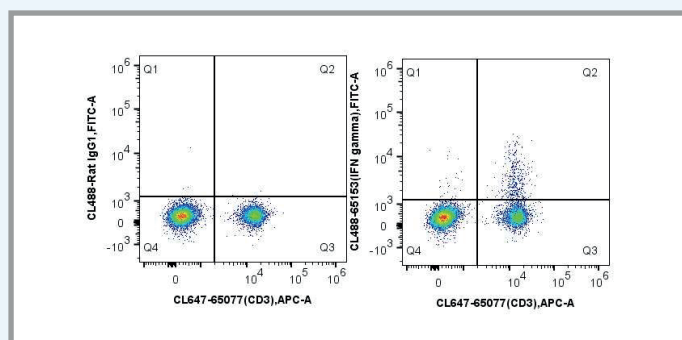




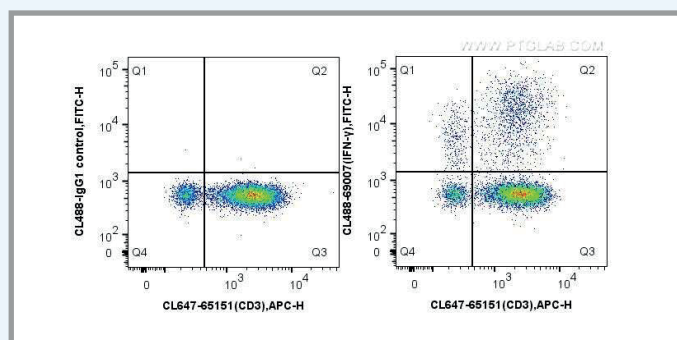
Intracellular Flow Cytometry

- Intracellular flow cytometry is a powerful tool to study intracellular target proteins such as signal transducers, transcription factors and cytokines.
- Proteintech provides a complete suite of antibodies for both surface and intracellular proteins that are conjugated to fluorescent CoraLite® dyes that span the spectrum.

Save your precious samples, measure your cytokines with confidence



Mouse splenocytes were stimulated with PMA and Ionomycin with CoraLite®647 Anti-Mouse CD3 and then fixed with 4% PFA and permeabilized with Flow Cytometry Perm Buffer (PF00011-C). Cells were then stained with CoraLite®488 Rat IgG1 isotype control (left) or 5 ul CoraLite®488 Anti-Mouse IFN gamma (CL488-65153) (right).



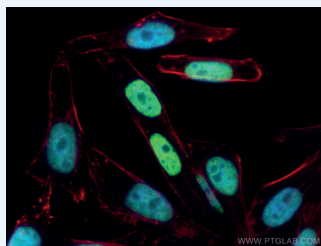
Human PBMCs were stimulated with PMA and Ionomycin with CoraLite®647 Anti-Human CD3 and then fixed with 4% PFA and permeabilized with Flow Cytometry Perm Buffer (PF00011-C). Cells were then stained with CoraLite®488 Mouse IgG1 isotype control (left) or 5 ul CoraLite®488 Anti-Human IFN gamma (CL488-69007) (right).

Anti-Cytokine Antibodies for intracellular flow

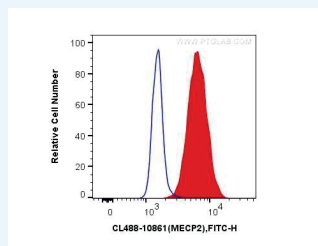
Catalog No.	Target	Reactivity	Host	Application	Research field
CL647-69002	TNF Alpha	human	Mouse	FC (Intra)	Caspase cascade, NFKB pathway, cGAS-STING signal pathway
CL488-69002	TNF Alpha	human	Mouse	FC (Intra)	Caspase cascade, NFKB pathway, cGAS-STING signal pathway
CL488-65135	IFN gamma	mouse	Rat	FC (Intra)	Cytokine signaling, inflammation
PE-65135	IFN gamma	mouse	Rat	FC (Intra)	Cytokine signaling, inflammation
CL647-65135	IFN gamma	mouse	Rat	FC (Intra)	Cytokine signaling, inflammation
CL488-69007	IFN gamma	human	mouse	FC (Intra)	Cytokine signaling, inflammation
CL647-69007	IFN gamma	human	mouse	FC (Intra)	Cytokine signaling, inflammation
CL488-69001	IL6	mouse	mouse	FC (Intra)	Cytokine signaling, inflammation
CL647-69001	IL6	mouse	mouse	FC (Intra)	Cytokine signaling, inflammation

Two birds with one stone: Immunofluorescence and Intracellular flow using the same conjugated Antibody

CoraLite488 anti MECP2 polyclonal antibody

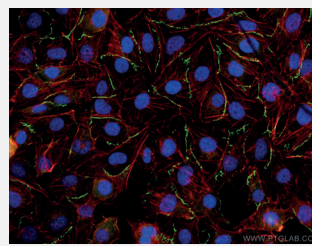


Immunofluorescent analysis of (4% PFA) fixed HepG2 cells using CoraLite®488 MECP2 antibody (CL488-10861) (green) and CL594-Phalloidin (red).

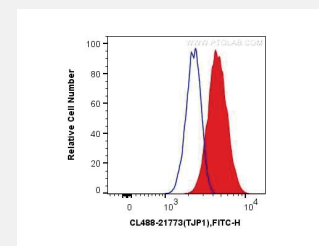


NIH/3T3 cells were intracellularly stained with 0.2 ug CoraLite®488 Anti-Human MECP2 (CL488-10861) (red), or 0.2 ug Control Antibody.

CoraLite488 anti ZO1(TJP1) polyclonal antibody



Immunofluorescent analysis of (4% PFA) fixed HUVEC cells using CoraLite®488 ZO-1 antibody (CL488-21773) at dilution of 1:200.



MCF-7 cells were intracellularly stained with 0.4 ug CoraLite®488 Anti-Human ZO-1 (CL488-21773) (red), or 0.4 ug Control Antibody.

Representative cancer biomarkers measured by intracellular flow targets

Catalog No.	Target	Reactivity	Host	Application	Research field
CL488-80093	Phospho-MST1 (Thr183)/MST2 (Thr180)	human, mouse	Rabbit	FC (Intra)	Signal transduction, Phosphorylation
CL488-67558	Phospho-GSK3B (Ser9)	human, mouse, rat	Mouse	FC (Intra), IF	Signal transduction, Phosphorylation
CL488-80108	Phospho-RPS6KA1 (Ser380)	human, mouse	Rabbit	FC (Intra)	Signal transduction, Phosphorylation
CL647-80127	Phospho-STK11 (Thr189)	human, mouse	Rabbit	FC (Intra)	Signal transduction, Phosphorylation
CL647-80067	Phospho-Beta Catenin (Ser33)	human	Rabbit	FC (Intra)	Signal transduction, Phosphorylation
CL647-80115	Phospho-STAT5A (Tyr694)	human	Rabbit	FC (Intra)	Signal transduction, Phosphorylation
CL594-67778	Phospho-mTOR (Ser2448)	human, mouse	Mouse	FC (Intra), IF	Signal transduction, Phosphorylation
CL488-21773	ZO-1	human, canine, mouse, rat, hamster	Rabbit	FC (Intra), IF	Cell adhesion/ junction; Cancer
CL594-10336	PAX8	human, mouse, rat	Rabbit	FC (Intra), IF	IVD, Cancer
CL594-18725	LC3B-Specific	human, mouse, rat	Rabbit	FC (Intra)	Autophagy
CL488-66708	ATG13	human, mouse, pig, rat	Mouse	FC (Intra), IF	autophagy
CL650-14887	GRP75	human, mouse, rat	Rabbit	FC (Intra), IF	Cancer; metabolism
CL594-67341	ATG7	human, mouse, pig, rat	Mouse	FC (Intra), IF	Autophagy
CL647-69012	TGF beta 1	human	Mouse	FC (Intra)	Cancer, Growth factors
CL488-67756	EED	human, mouse	Mouse	FC (Intra), IF	Epigenetics and Nuclear Signaling
CL488-66446	CBX3	human, mouse	Mouse	FC (Intra), IF	Epigenetics and Nuclear Signaling
CL488-67025	DDX5	human, mouse, rat	Mouse	FC (Intra), IF	Epigenetics and Nuclear Signaling
CL488-66247	IMP3	human	Mouse	FC (Intra), IF	Epigenetics and Nuclear Signaling
CL647-67756	EED	human, mouse	Mouse	FC (Intra), IF	Epigenetics and Nuclear Signaling
CL555-10861	MECP2	human, mouse	Rabbit	FC (Intra), IF	Epigenetics and Nuclear Signaling

Flow Cytometry Related Reagents

Catalog No.	Product name
PF00011	Foxp3/Transcription Factor staining Buffer Kit
PF00011-A	Foxp3/Transcription Factor Fix/Perm Concentrate (4X)
PF00011-B	Foxp3/Transcription Factor Fix/Perm Dilute (1X)
PF00011-C	Flow Cytometry Perm Buffer (10X)
PF00012	Flow Cytometry Staining Buffer (1X)
PF00013	RBC lysis buffer

