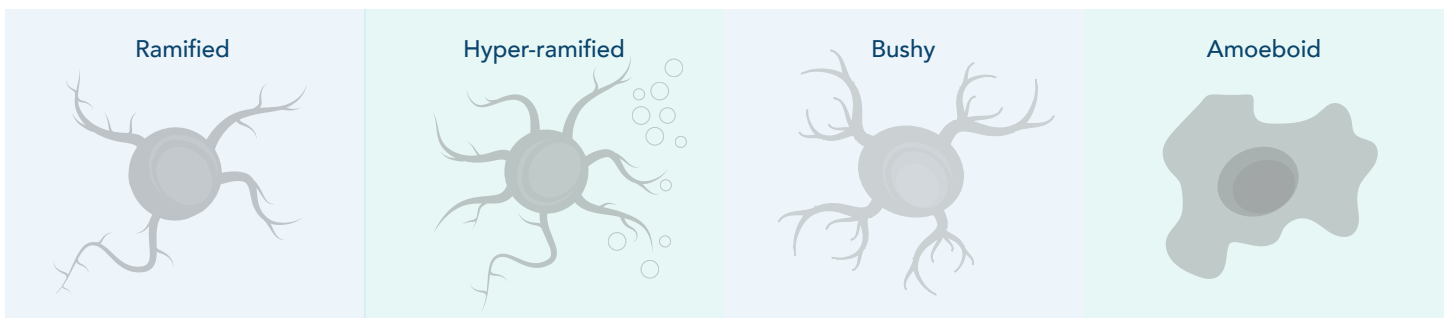


Microglia Activation and Markers

Microglia are the resident immune cells of the CNS and key players in brain homeostasis. They are morphologically dynamic cells that become activated in response to environmental changes. Microglial activation and neuroinflammation have been associated with aging and disease, including neurodegenerative and neuropsychiatric disorders.

Baseline

Activated

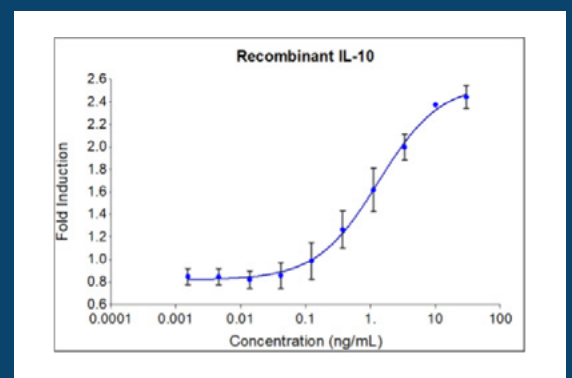


*Pro-inflammatory | IFN- γ IL-17 TNF α *Anti-inflammatory | IL-4 IL-10 IL-13 TGF β

Boost your microglial activation using HumanKine proteins!

Target	Catalog No.	Microglial Subset
IFN- γ	HZ-1301	Pro-inflammatory
IL-17	HZ-1113	Pro-inflammatory
TNF α	HZ-1014	Pro-inflammatory
IL-4	HZ-1004	Anti-inflammatory
IL-10	HZ-1145	Anti-inflammatory
TGF β	HZ-1011	Anti-inflammatory

**HumanKine cytokines are expressed in human cells and possess native post-translational modifications, glycosylation.

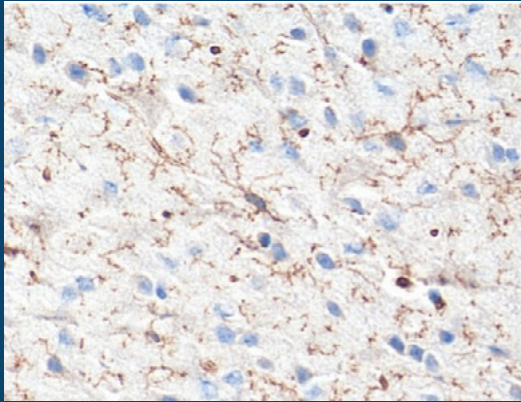


Recombinant human IL-10 (HZ-1145) induces dose-dependent proliferation of the MC/9 (mouse mast cell) cell line.

Antibodies for microglial research

Unconjugated Antibodies

TMEM119 Polyclonal



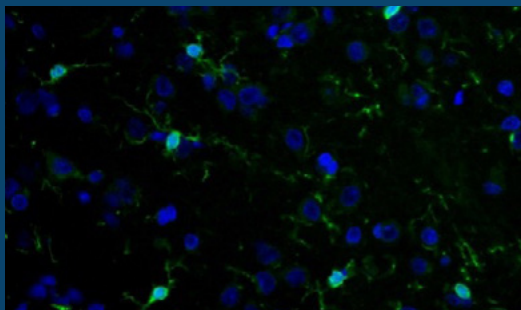
IHC of paraffin-embedded mouse brain tissue using TMEM119 antibody (27585-1-AP).

Target	Catalog No.	Host	Application
P2RY12	11976-1-AP	Rabbit	WB, ELISA
TMEM119*	69948-1-Ig	Mouse	WB, ELISA
TMEM119*	27585-1-AP	Rabbit	WB, IHC, FC, ELISA
TREM2*	13484-1-AP	Rabbit	WB, IHC, IF, ELISA
TREM2	27599-1-AP	Rabbit	IHC, IF, ELISA
Iba1***	10904-1-AP	Rabbit	WB, IHC, IF, FC, ELISA
Iba1*	66827-1-Ig	Mouse	WB, IHC, IF, ELISA
Iba1	26177-1-AP	Rabbit	IHC, ELISA
CD11b*	65519-1-Ig	Mouse	WB, IHC, IF, FC, ELISA
CD11b*	21851-1-AP	Rabbit	WB, IHC, IF, FC, ELISA

>10 citations*, >50 citations**, >100 citations***

Conjugated Antibodies for IF and Flow

CL488-Iba Polyclonal



IF analysis of fixed rat brain tissue using CoraLite488 Iba1 antibody (CL488-10904).

Target	Conjugate	Catalog No.	Host	Application
Iba1	CoraLite® 594	CL594-10904	Rabbit	IF
Iba1	CoraLite® Plus 488	CL488-10904	Rabbit	IF
Iba1	CoraLite® Plus 647	CL650-66827	Mouse	FC (Intra)
CD11b	CoraLite® Plus 488	CL488-65116	Mouse	IF, FC
CD11b	CoraLite® 594	CL594-65055	Rat	FC
CD11b	CoraLite® Plus 647	CL647-65116	Human	FC
CD68	CoraLite® 594	CL594-25747	Rabbit	IF, FC (Intra)
CD68	CoraLite® Plus 488	CL488-25747	Rabbit	IF, FC (Intra)

IHCeasy Kits

Target	Catalog No.	Reactivity	Primary Ab Type	Secondary Ab Type
Iba1	KHC0056	Human, Mouse, Rat	Rabbit Polyclonal	Polymer-HRP-Goat anti-Rabbit
CD11b	KHC0027	Human	Mouse Monoclonal	Polymer-HRP-Goat anti-Mouse
CD68	KHC0006	Human	Mouse Monoclonal	Polymer-HRP-Goat anti-Mouse