

FlexAble Antibody Labeling kits for Neuroscience

Five reasons why you should try our FlexAble antibody labeling kits:

1

Multiplex antibodies from the same species.

2

Shorten your immunoassay workflows by removing the need for a secondary antibody.

3

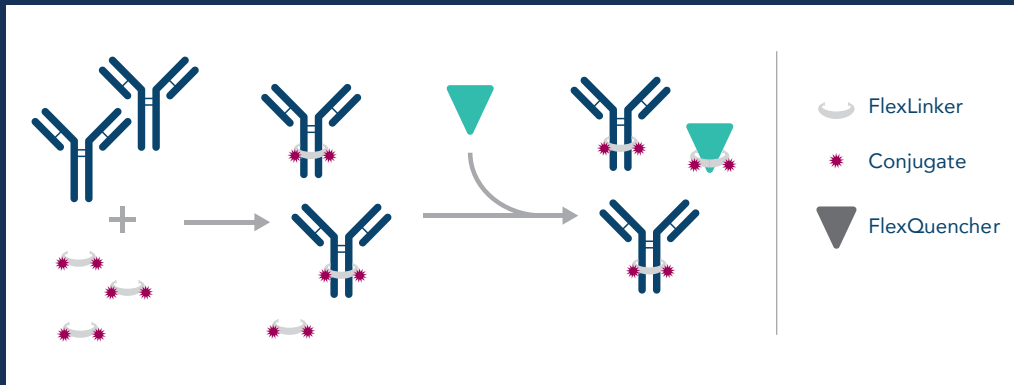
Reduce background and improve image quality. Eliminate issues from mouse-on-mouse staining.

4

Works with any antibody in any storage buffer. Label as little as 0.5µg

5

Flexible panel design: mix and match with pre-conjugated primary antibodies and primary/secondary antibody combinations.

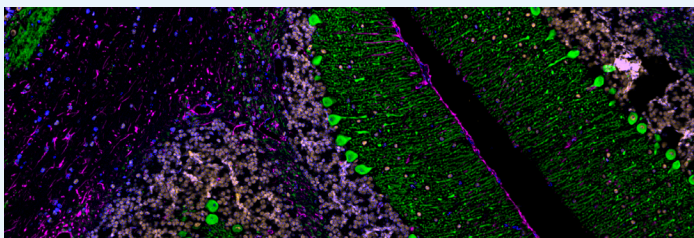


How it works?

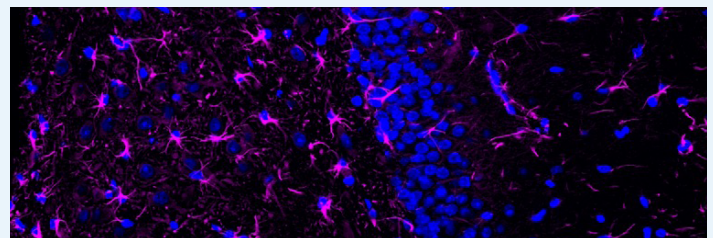
High affinity, non-covalent binding the FlexLinker with a conjugated label.

Homogenous, well defined and fully functional antibody. 95-99% labeling efficiency.

Simple, easy-to-follow protocol taking only 10 minutes.



▲ Mouse cerebellum stained for calbindin labeled with FlexAble HRP Rabbit IgG (KFA005) and Tyramide-488 (green), FUS labeled with FlexAble HRP Mouse IgG1 (KFA025) and Tyramide-555 (orange), and GFAP labeled with FlexAble HRP Mouse IgG2a (KFA045) and Tyramide-650 (magenta). Cell nuclei are in blue.



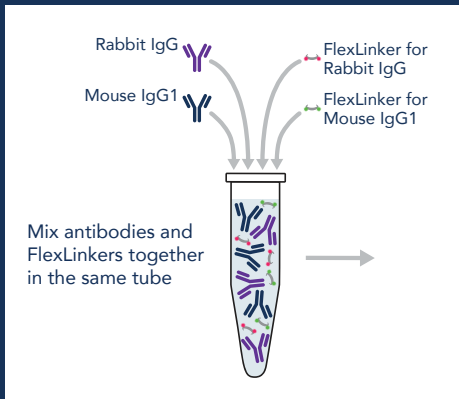
▲ Rat brain stained for GFAP labeled with FlexAble Biotin Mouse IgG2a (KFA047) and Streptavidin-650. Cell nuclei are blue.

Flexible protocols with FlexAble Antibody labeling kits

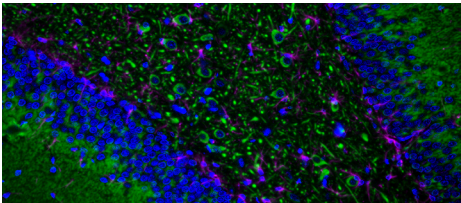
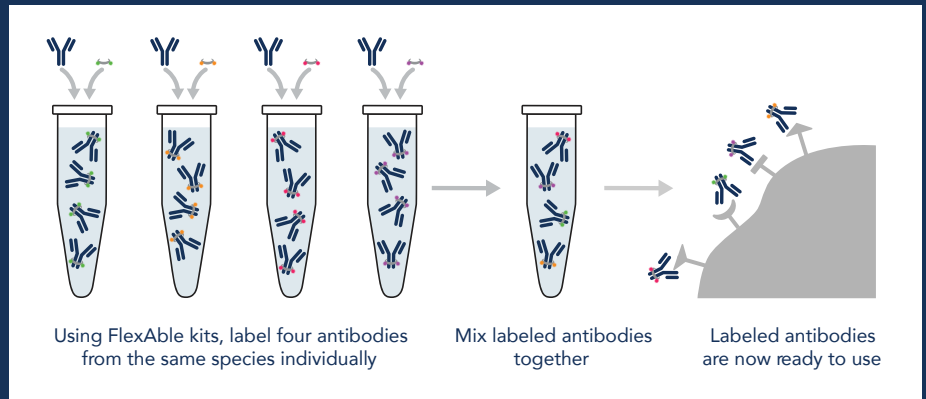
Mix-and-Match.

Multiplex FlexAble labeled antibodies alongside primary/secondary antibodies and pre-conjugated antibodies.

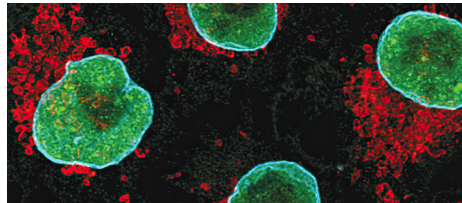
Different species



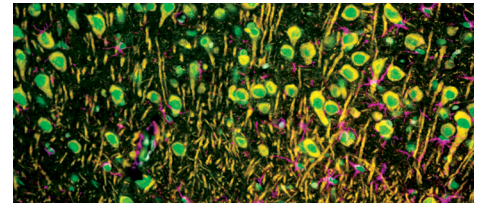
Same species



▲ Rat brain stained for MAP2 labeled with FlexAble HRP Rabbit IgG (KFA005) and Tyramide-488 (green), GFAP labeled with FlexAble HRP Mouse IgG2a (KFA045) and Tyramide-650 (magenta). DAPI (blue).



▲ HeLa cells stained for TDP-43 labeled with FlexAble CoraLite®488 Rabbit IgG (KFA001, green), TOMM20 labeled with FlexAble CoraLite®488 Rabbit IgG (KFA002, red) and Lamin B1 FlexAble CoraLite®647 Rabbit IgG (KFA003, cyan).



▲ Rat brain stained with MAP2 labeled with FlexAble CoraLite® Plus 555 Rabbit IgG (KFA002, orange), GFAP labeled with FlexAble CoraLite® Plus 647 Kit (KFA003, magenta), and CoraLite® 488-conjugated TDP-43 antibody (CL488-10782, green).

Conjugate	Available for
CoraLite® Plus 405	✓ Rabbit IgG
FITC Plus	✓ Mouse IgG1
CoraLite® 488	✓ Mouse IgG2a
CoraLite® Plus 555	✓ Mouse IgG2b
CoraLite® Plus 647	
CoraLite® Plus 750	
Horseradish Peroxidase (HRP)	
Biotin	



Scan here for more multiplexing magic!