



ANTIBODIES FOR DEUBIQUITINASES (DUBs)

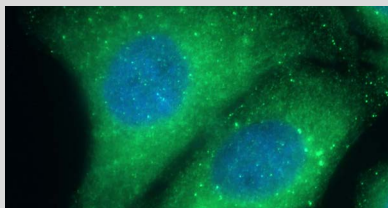
Unique Proteintech[®] antibodies for researching deubiquitinases.

To place your order online visit www.ptglab.com

Please Note: All products featured in this product focus are for research use only.

Antibody Name	Cat. No.	Type	Applications
BAP1	10398-1-AP	Rabbit Poly	ELISA, WB
BRCC3	15391-1-AP	Rabbit Poly	ELISA, IHC, IP, WB
CYLD	  11110-1-AP	Rabbit Poly	ELISA, IHC, IP, WB
SENPA1	25349-1-AP	Rabbit Poly	ELISA, IHC, IP, WB









Antibody Name
STAM
Catalog Number
12434-1-AP
Type
Rabbit Polyclonal
Applications
ELISA, IF, IHC, IP, WB



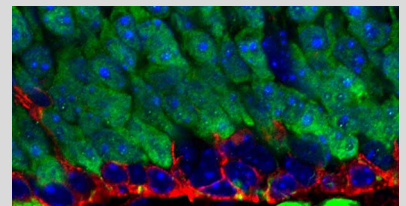
Immunofluorescent analysis of (-20°C Ethanol) fixed HepG2 cells using STAM antibody (12434-1-AP) at a dilution of 1:500 and Alexa Fluor 488-conjugated AffiniPure Goat Anti-Rabbit IgG (H+L).





STAM2	13009-1-AP	Rabbit Poly	ELISA, IP, WB
STAMBP	  11346-1-AP	Rabbit Poly	ELISA, IHC, WB
SUMO1	10329-1-AP	Rabbit Poly	ELISA, WB
UCHL1	 66230-1-Ig	Mouse Mono	ELISA, IF, IHC, WB
UCHL5	11527-1-AP	Rabbit Poly	ELISA, IHC, WB
USP1	  14346-1-AP	Rabbit Poly	ELISA, IHC, IP, WB
USP1	 66069-1-Ig	Mouse Mono	ELISA, IHC, WB
USP10	19374-1-AP	Rabbit Poly	ELISA, IF, IP, WB
USP11	  10244-1-AP	Rabbit Poly	ELISA, IHC, IP, WB

Antibody Name
UCHL1/PGP9.5
Catalog Number
14730-1-AP
Type
Rabbit Polyclonal
Applications
ELISA, IF, IHC, IP, WB

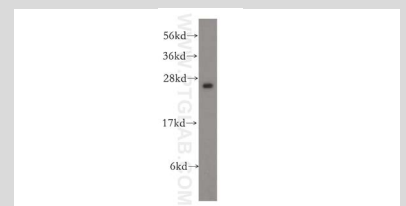


IF result of UCHL1 (14730-1-AP, 1:300) with 1% PLP fixed adult mouse olfactory epithelium. (Red: CK14; Green: UCHL1; Blue: DAPI). By Brian Lin, Tufts University.












Antibody Name
UCHL3
Catalog Number
12384-1-AP
Type
Rabbit Polyclonal
Applications
ELISA, IHC, IP, WB





HeLa cells were subjected to SDS PAGE followed by western blot with UCHL3 antibody (12384-1-AP) at a dilution of 1:500, incubated at room temperature for 1.5 hours.



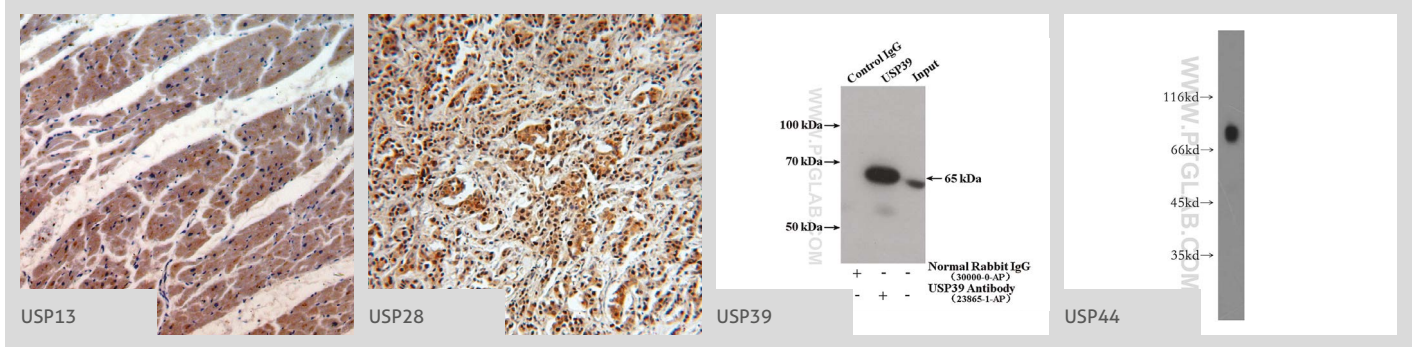


USP11	22340-1-AP	Rabbit Poly	ELISA, IF, IHC, IP, WB
USP12	12608-1-AP	Rabbit Poly	ELISA, WB
USP13	   16840-1-AP	Rabbit Poly	ELISA, IHC, IP, WB
USP13	 66176-1-Ig	Mouse Mono	ELISA, IF, IHC, WB
USP14	 14517-1-AP	Rabbit Poly	ELISA, FC, IF, IHC, IP, WB
USP15	  14354-1-AP	Rabbit Poly	ELISA, IHC, IP, WB
USP16	14055-1-AP	Rabbit Poly	ELISA, IHC, IP, WB

 This number shows the amount of times our antibody has been cited in a publication.

 This icon shows that the antibody has been validated using siRNA knockdown/knockout experiment.

More validation images available on our website.



Antibody Name	Cat. No.	Type	Applications
USP18	12153-1-AP	Rabbit Poly	ELISA, WB
USP19	1 25768-1-AP	Rabbit Poly	ELISA, IP, WB
USP2	5 10392-1-AP	Rabbit Poly	ELISA, IHC, WB
USP2	15404-1-AP	Rabbit Poly	ELISA, IF, IHC, WB
USP20	1 17491-1-AP	Rabbit Poly	ELISA, IHC, IP, WB
USP21	17856-1-AP	Rabbit Poly	ELISA, IF, IHC, WB
USP22	55110-1-AP	Rabbit Poly	ELISA, WB
USP24	1 13126-1-AP	Rabbit Poly	ELISA, IF, IHC, WB
USP25	1 12199-1-AP	Rabbit Poly	ELISA, IHC, IP, WB
USP28	K 3 17707-1-AP	Rabbit Poly	ELISA, IHC, IP, WB
USP3	12490-1-AP	Rabbit Poly	ELISA, IF, IHC, IP, WB
USP32	18838-1-AP	Rabbit Poly	ELISA, IHC, IP, WB
USP33	12060-2-AP	Rabbit Poly	ELISA, IHC, WB
USP33	K 3 20445-1-AP	Rabbit Poly	ELISA, IHC, IP, WB
USP34	18827-1-AP	Rabbit Poly	ELISA, IHC, IP, WB
USP35	24559-1-AP	Rabbit Poly	ELISA, WB
USP36	1 14783-1-AP	Rabbit Poly	ELISA, IP, WB
USP37	2 18465-1-AP	Rabbit Poly	ELISA, IP, WB
USP38	17767-1-AP	Rabbit Poly	ELISA, IHC, IP, WB
USP39	K 5 23865-1-AP	Rabbit Poly	ELISA, IF, IHC, IP, WB
USP42	18811-1-AP	Rabbit Poly	ELISA, WB

00 This number shows the amount of times our antibody has been cited in a publication.

Antibody Name	Cat. No.	Type	Applications
USP44	1 15521-1-AP	Rabbit Poly	ELISA, WB
USP45	15866-1-AP	Rabbit Poly	ELISA, IHC, WB
USP46	13502-1-AP	Rabbit Poly	ELISA, IHC, WB
USP48	12076-1-AP	Rabbit Poly	ELISA, IHC, IP, WB
USP49	K 1 18066-1-AP	Rabbit Poly	ELISA, IHC, WB

Antibody Name
USP5

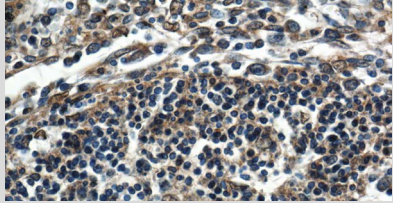
Catalog Number
10473-1-AP

Type
Rabbit Polyclonal

Applications
ELISA, IF, IHC, IP, WB

11 Publications

KD/KO Validated



Immunohistochemical staining of paraffin-embedded human spleen tissue slide using USP5 antibody (10473-1-AP) at a dilution of 1:200 (40x objective).

USP5	1 15158-1-AP	Rabbit Poly	ELISA, IF, IP, WB
USP5	66213-1-Ig	Mouse Mono	ELISA, WB
USP50	20374-1-AP	Rabbit Poly	ELISA, IHC, WB
USP53	16255-1-AP	Rabbit Poly	ELISA, WB
USP9X	K 1 55054-1-AP	Rabbit Poly	ELISA, IF, IHC, IP, WB
VCPIP1	17802-1-AP	Rabbit Poly	ELISA, IHC, WB
WDR48	16503-1-AP	Rabbit Poly	ELISA, IP, WB

K This icon shows that the antibody has been validated using siRNA knockdown/knockout experiment.

CUSTOM PRODUCTION SERVICES

Can't find an antibody that fits your needs?

Order a Proteintech® custom antibody at ptglab.com