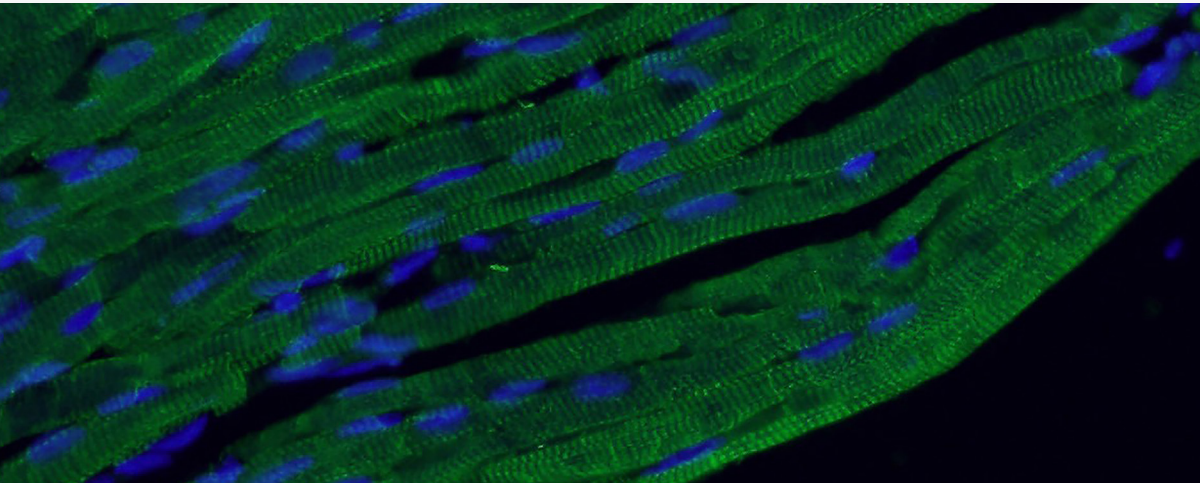


CARDIOVASCULAR RESEARCH FOCUS

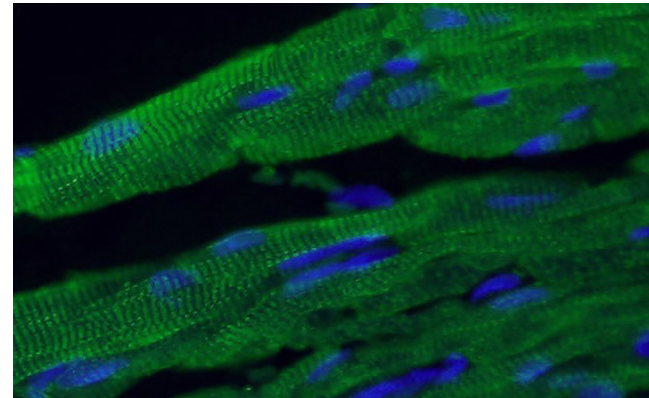
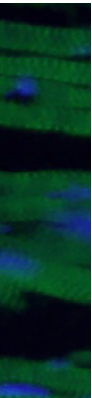
Proteintech offers a wide range of markers
and related antibodies for cardiovascular research.



IF analysis of (4% PFA) fixed mouse heart tissue using TNNI3 antibody (21652-1-AP) at a dilution of 1:50.

CONTENTS

- 3-4** Age-associated Changes in Cardiovascular Tissues
- 5** mTOR in Cardiac Physiology and Disease
- 6** Cardiac Troponin T Antibody
- 7** Cardio-related Antibodies
- 8** \$99 Control Antibodies
- 9** Contact Us



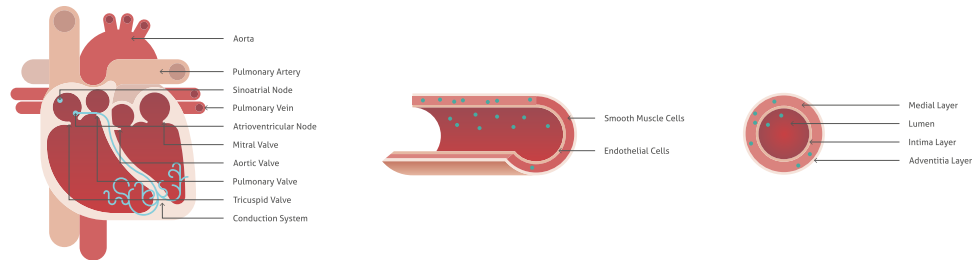
AGE-ASSOCIATED CHANGES IN CARDIOVASCULAR TISSUES

Age-associated changes within the cardiovascular system contribute to deregulation of molecular pathways and pathological alterations. These include:

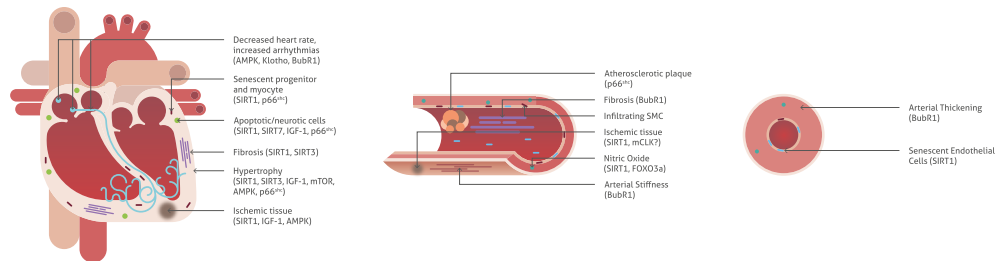
- Hypertrophy**
- Altered left ventricular diastolic function**
- Abnormalities in arterial stiffness**
- Impaired endothelial function**

AGE-ASSOCIATED CHANGES IN CARDIOVASCULAR TISSUES

Young Heart



Mature Heart

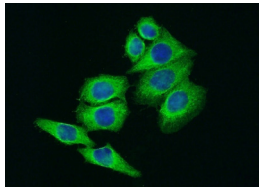


mTOR IN CARDIAC PHYSIOLOGY & DISEASE

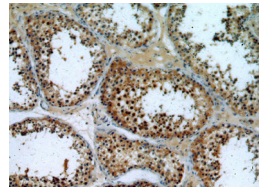
Inhibition of mTOR presents evidence for being cardioprotective during aging and cardiac stress.

Product Focus

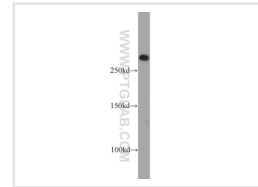
- **Antibody Name**
mTOR
- **Type**
 Rabbit Polyclonal
- **Applications**
 ELISA, IF, IHC,
 IP, WB
- **Catalog Number**
 20657-1-AP
- **Publications**
 19 publications



Immunofluorescent analysis of HeLa cells using mTOR antibody (20657-1-AP) at a dilution of 1:50 and Alexa Fluor 488-conjugated AffiniPure Goat Anti-Rabbit IgG(H+L).



Immunohistochemistry of paraffin-embedded human testis using mTOR antibody (20657-1-AP) at a dilution of 1:50 (10x objective).



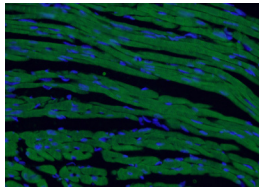
MCF7 cells were subjected to SDS PAGE followed by western blot with mTOR antibody (20657-1-AP) at a dilution of 1:500.

CARDIAC TROPONIN T ANTIBODY

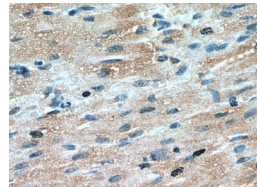
cTnT is a cardiac regulatory protein involved in the control of calcium-mediated interaction between actin and myosin.

Product Focus

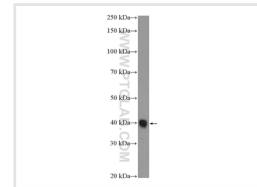
- **Antibody Name**
cTnT
- **Catalog Number**
15513-1-AP
- **Type**
Rabbit Polyclonal
- **Publications**
5 publications
- **Applications**
ELISA, IF, IHC, WB



Immunofluorescent analysis of (4% PFA) fixed mouse heart tissue using cTnT antibody (15513-1-AP) at a dilution of 1:50 and Alexa Fluor 488-conjugated AffiniPure Goat Anti-Rabbit IgG(H+L).



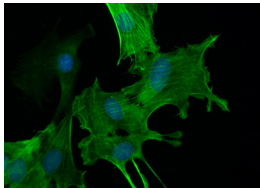
Immunohistochemistry of paraffin-embedded human heart using cTnT antibody (15513-1-AP) at a dilution of 1:50 (40x objective).



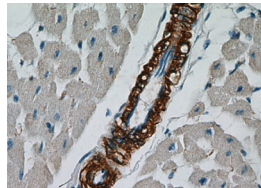
Mouse heart tissue was subjected to SDS PAGE followed by western blot with cTnT antibody (15513-1-AP) at a dilution of 1:1000.

CARDIO-RELATED ANTIBODIES

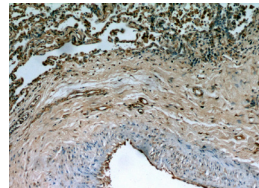
Antibody Name	Catalog Number	Applications	Publications
<u>ACTA2/smooth muscle actin</u>	14395-1-AP	ELISA, FC, IF, IHC, IP, WB	57
<u>CD31 (PECAM-1)</u>	11265-1-AP	ELISA, FC, IF, IHC, IP, WB	15
<u>MYL7</u>	17283-1-AP	ELISA, IF, IHC, IP, WB	1
<u>Myosin light chain 2</u>	10906-1-AP	ELISA, FC, IF, IHC, IP, WB	44



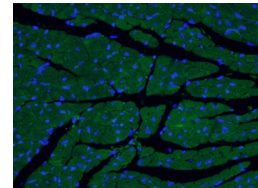
Immunofluorescent analysis of (-20°C Ethanol) fixed C2C12 cell using ACTA2 antibody (14395-1-AP) at a dilution of 1:50.



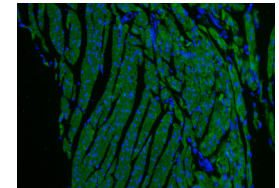
Immunohistochemistry of paraffin-embedded human heart tissue slide using ACTA2 antibody (14395-1-AP) at a dilution of 1:5000 (40x objective).



Immunohistochemistry of paraffin-embedded human lung cancer using PECAM1, CD31 antibody (11265-1-AP) at a dilution of 1:50 (10x objective).



Immunofluorescent analysis of (4% PFA) fixed mouse heart tissue using MYL7 antibody (17283-1-AP) at a dilution of 1:50.



Immunofluorescent analysis of (4% PFA) fixed mouse heart tissue using MYL2 antibody (10906-1-AP) at a dilution of 1:50.

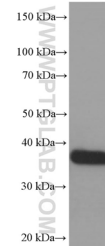
PROMOTION

\$99 CONTROL ANTIBODIES

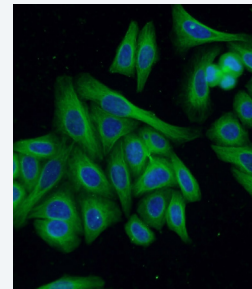
Popular tag/control antibodies are just \$99 each.

GAPDH, beta Tubulin, and 6*His tag antibodies included.

See the full list of tag/control antibodies at ptglab.com



Corn whole-plant tissue was subjected to SDS PAGE followed by western blot with GAPDH antibody (60004-1-Ig) at a dilution of 1:10000.



Immunofluorescent analysis of HepG2 cells using beta-Tubulin antibody (66240-1-Ig) at a dilution of 1:50 and Alexa Fluor 488-conjugated AffiniPure Goat Anti-Mouse IgG(H+L).

CONTACT US

Proteintech Group
US Head Office

proteintech@ptglab.com

Proteintech Europe
United Kingdom

europe@ptglab.com

Proteintech
China Office

service@ptglab.com

Support

Available 24 hours via Live Chat and 9–5 (CDT) via phone.

Please visit us at www.ptglab.com for more information about our antibodies and technical tips.

