

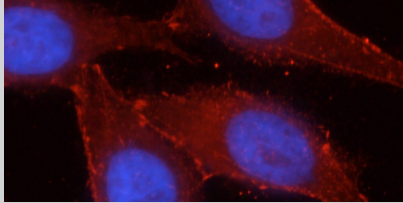
# ANTIBODIES FOR HYPOXIA RESEARCH

Notable Proteintech<sup>®</sup> antibodies for cancer research.

Please Note: All products featured in this product focus are for research use only.

Antibody Name	Cat. No.	Type	Applications
ARNT, HIF1B	<b>4</b> 14105-1-AP	Rabbit Poly	ELISA, IF, IP, WB
BACH1	<b>K</b> <b>2</b> 14018-1-AP	Rabbit Poly	ELISA, IHC, WB

**Antibody Name**  
beta-Catenin  
**Catalog Number**  
51067-2-AP  
**Type**  
Rabbit Polyclonal  
**Applications**  
ELISA, IF, IHC, IP, WB

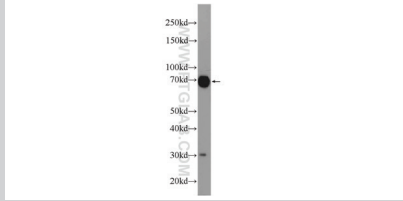


**63 Publications**

**KD/KO Validated**

*Immunofluorescent analysis of HepG2 cells, using CTNNB1 antibody (51067-2-AP) at a 1:50 dilution and Rhodamine-labeled goat anti-rabbit IgG (red).*

**Antibody Name**  
CA IX  
**Catalog Number**  
11071-1-AP  
**Type**  
Rabbit Polyclonal  
**Applications**  
ELISA, FC, IHC, IP, WB



**4 Publications**

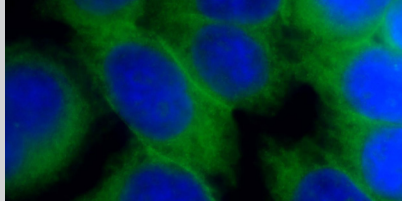
*Mouse skin tissue was subjected to SDS PAGE followed by western blot with CA9 antibody (11071-1-AP) at a dilution of 1:1000.*

CA IX	11443-1-AP	Rabbit Poly	ELISA, IHC, WB
CA9	66243-1-Ig	Mouse Mono	ELISA, IF, IHC, WB
Clusterin	66109-1-Ig	Mouse Mono	ELISA, IHC, WB
Clusterin	<b>2</b> 12289-1-AP	Rabbit Poly	ELISA, IHC, IP, WB
Creatine kinase B type	15137-1-AP	Rabbit Poly	ELISA, IHC, IP, WB
Creatine kinase B-Specific	18713-1-AP	Rabbit Poly	ELISA, IHC, WB

**00** This number shows the amount of times our antibody has been cited in a publication.

Antibody Name	Cat. No.	Type	Applications
CREB1	<b>4</b> 12208-1-AP	Rabbit Poly	ELISA, FC, IF, IHC, IP, WB
CUL2	<b>K</b> <b>3</b> 10981-2-AP	Rabbit Poly	ELISA, IF, IHC, IP, WB
CXCR4	<b>5</b> 60042-1-Ig	Mouse Mono	ELISA, FC, WB
CXCR4	<b>3</b> 11073-2-AP	Rabbit Poly	ELISA, IP, WB
EEF1B2	60329-1-Ig	Mouse Mono	ELISA, IF, WB
EEF1B2	<b>K</b> <b>3</b> 10095-2-AP	Rabbit Poly	ELISA, IF, IHC, IP, WB
EEF1B2	<b>5</b> 10483-1-AP	Rabbit Poly	ELISA, IHC, WB
EGFR (C-terminal)	51071-2-AP	Rabbit Poly	ELISA, IF, IHC, IP, WB
EGFR (N-terminal)	<b>2</b> 22542-1-AP	Rabbit Poly	ELISA, FC, IHC, WB
EGFR-Specific	<b>17</b> 18986-1-AP	Rabbit Poly	ELISA, FC, IF, IHC, IP, WB
EPO	17908-1-AP	Rabbit Poly	ELISA, IHC, WB
GLUT1	66290-1-Ig	Mouse Mono	ELISA, FC, IHC, WB

**Antibody Name**  
GLUT1  
**Catalog Number**  
21829-1-AP  
**Type**  
Rabbit Polyclonal  
**Applications**  
ELISA, FC, IF, IHC, WB



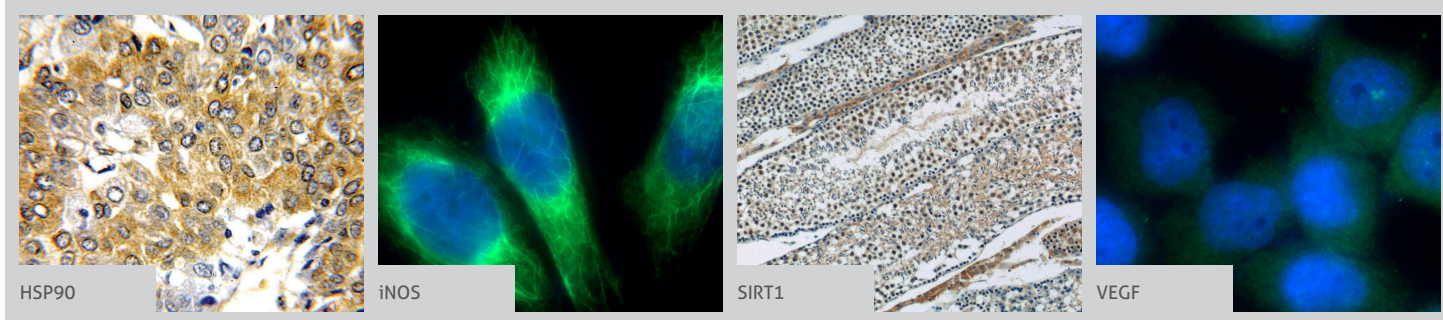
**19 Publications**

*Immunofluorescent analysis of HeLa cells using SLC2A1, GLUT1 antibody (21829-1-AP) at a dilution of 1:50 and Alexa Fluor 488-conjugated AffiniPure Goat Anti-Rabbit IgG(H+L).*

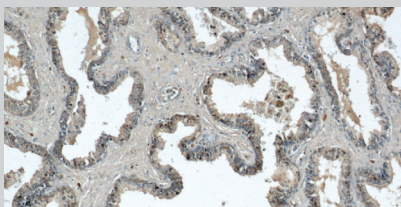
GSK3B	<b>1</b> 51065-1-AP	Rabbit Poly	ELISA, IF, IHC, IP, WB
GSK3B	<b>2</b> 15113-1-AP	Rabbit Poly	ELISA, IHC, IP, WB
GSK3B	24198-1-AP	Rabbit Poly	ELISA, FC, IF, IHC, IP, WB

**K** This icon shows that the antibody has been validated using siRNA knockdown/knockout experiment.

More validation images available on our website.

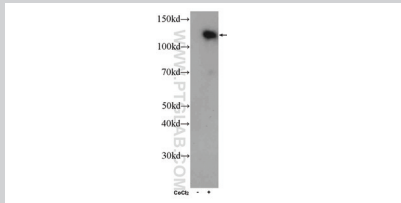


**Antibody Name**  
GSK3B  
**Catalog Number**  
22104-1-AP  
**Type**  
Rabbit Polyclonal  
**Applications**  
ELISA, IF, IHC, IP, WB  
**34 Publications**  
**KD/KO Validated**



*Immunohistochemical staining of paraffin-embedded human prostate hyperplasia using GSK3B antibody (22104-1-AP) at a dilution of 1:50 (10x objective).*

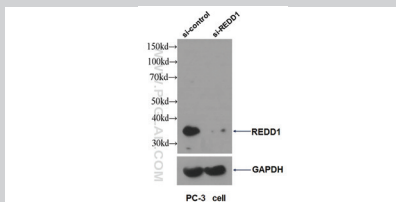
**Antibody Name**  
HIF1a  
**Catalog Number**  
20960-1-AP  
**Type**  
Rabbit Polyclonal  
**Applications**  
ELISA, FC, IF, IHC, WB  
**44 Publications**  
**KD/KO Validated**



*Whole cell lysate from HeLa cells that were either treated with cobalt chloride (+; 500 uM) or mock treated (-) and were subjected to SDS PAGE followed by western blot with HIF1a antibody (20960-1-AP) at a dilution of 1:300.*

Antibody Name	Cat. No.	Type	Applications
PHD1	12984-1-AP	Rabbit Poly	ELISA, IF, WB
PHD2	19886-1-AP	Rabbit Poly	ELISA, WB
PHD2	20368-1-AP	Rabbit Poly	ELISA, IF, IHC, WB
PHD3	18325-1-AP	Rabbit Poly	ELISA, IHC, IP, WB
RBX1	14895-1-AP	Rabbit Poly	ELISA, IHC, IP, WB

**Antibody Name**  
REDD1 Specific  
**Catalog Number**  
10638-1-AP  
**Type**  
Rabbit Polyclonal  
**Applications**  
ELISA, IF, IHC, IP, WB  
**134 Publications**  
**KD/KO Validated**



*WB result of REDD1 antibody (10638-1-AP, 1:1000) with si-control and si-REDD1 transfected PC-3 cells.*

HIF1AN	10646-1-AP	Rabbit Poly	ELISA, IHC, WB
HMOX2	14817-1-AP	Rabbit Poly	ELISA, IF, IHC, IP, WB
HSP90	60318-1-Ig	Mouse Mono	ELISA, FC, WB
HSP90	13171-1-AP	Rabbit Poly	ELISA, FC, IF, IHC, IP, WB
iNOS	18985-1-AP	Rabbit Poly	ELISA, IF, IHC, WB
L-VEGFA	22341-1-AP	Rabbit Poly	ELISA, IF, WB
NSE	55235-1-AP	Rabbit Poly	ELISA, IHC, WB
NSE	66150-1-Ig	Mouse Mono	ELISA, IF, IHC, WB
NSE	10149-1-AP	Rabbit Poly	ELISA, IHC, IP, WB

SIAH1	13886-1-AP	Rabbit Poly	ELISA, WB
SIAH2	12651-1-AP	Rabbit Poly	ELISA, IP, WB
SIRT1	60303-1-Ig	Mouse Mono	ELISA, IF, IHC, IP, WB
SIRT1	13161-1-AP	Rabbit Poly	ELISA, IF, IHC, IP, WB
TCEB1	12450-1-AP	Rabbit Poly	ELISA, IHC, WB
TCEB2	10779-1-AP	Rabbit Poly	ELISA, IHC, IP, WB
UBE2D1-Specific	11373-1-AP	Rabbit Poly	ELISA, IHC, WB
UBE2D3	11677-1-AP	Rabbit Poly	ELISA, IHC, WB
VEGF	19003-1-AP	Rabbit Poly	ELISA, IF, IHC, IP, WB
VHL	24756-1-AP	Rabbit Poly	ELISA, IF
VHL	16538-1-AP	Rabbit Poly	ELISA, IF, IHC

00 This number shows the amount of times our antibody has been cited in a publication.

K This icon shows that the antibody has been validated using siRNA knockdown/knockout experiment.

**Don't see a target of interest?**

Please contact your account manager or visit [ptglab.com](http://ptglab.com) to view our catalog of 12,000+ antibodies.