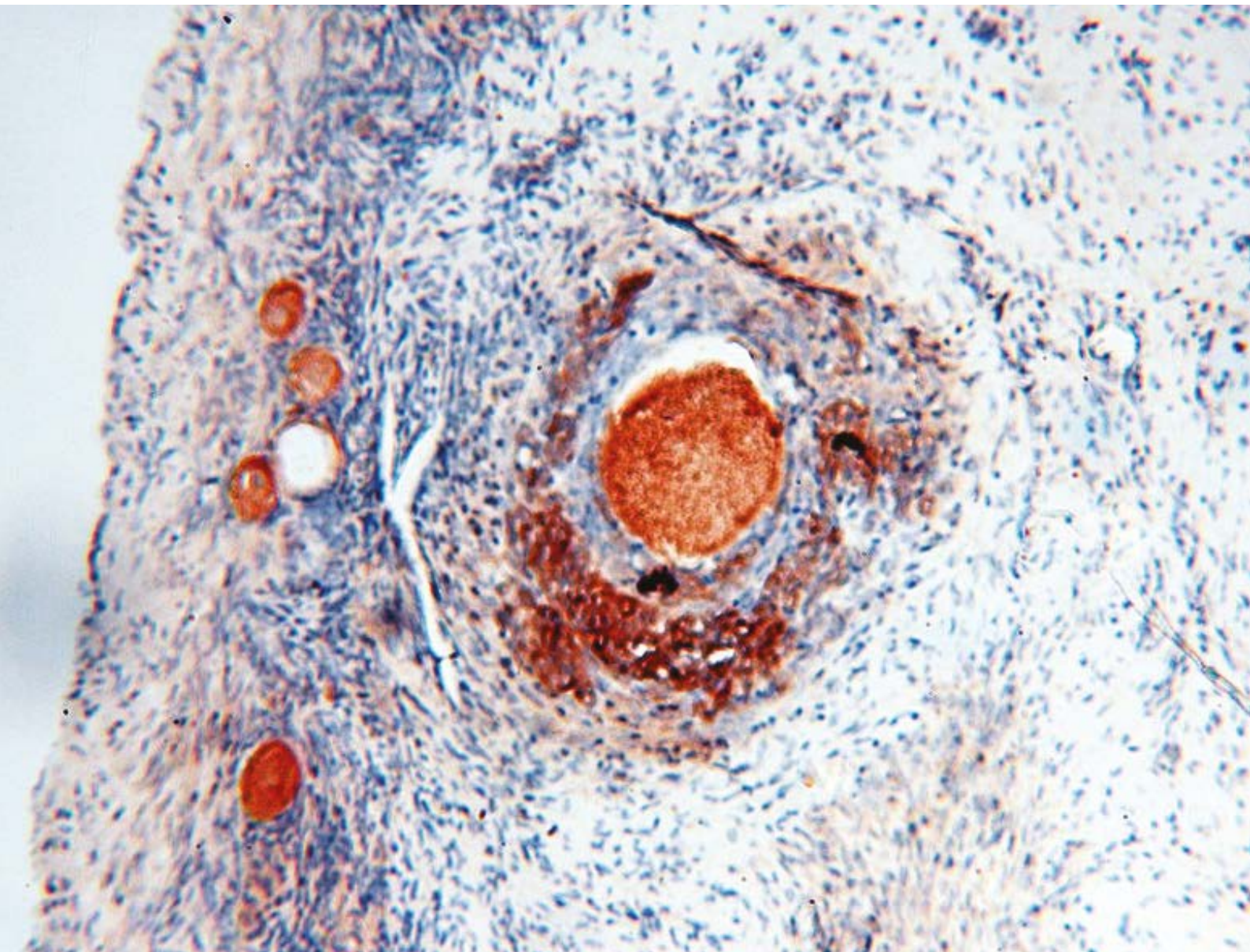


# ANTIBODIES FOR CELL BIOLOGY

## CELL DEATH

[www.ptglab.com](http://www.ptglab.com)



---

**Front Cover:**

*Immunohistochemical of paraffin-embedded human ovary using DHCR24 antibody (10471-1-AP) at a dilution of 1:100 (10x objective).*

# WELCOME

---

## Foreword

**Billions of cells undergo apoptosis in our bodies each day. Although this process ends in the death of a cell it is a process essential to life. The inhibition of apoptosis can result in a number of cancers, autoimmune complications and inflammatory diseases. We have included a range of antibodies related to both extrinsic and intrinsic apoptotic pathways in this catalog.**

As well as apoptosis, cell death can occur in several other ways such as necrosis and nerve excitotoxicity. These processes differ in nature from apoptosis and autophagy in that they are uncontrolled and lead to the lysis of cells, inflammatory responses and potentially, to serious health problems. As another important aspect of cell death, we have also included some of our antibodies relating to lytic death and proteolysis in this comprehensive selection of our cell death-related antibodies.

Another destructive process essential for health is autophagy. Though initially considered to be a form of non-apoptotic cell death, a consensus has emerged that autophagy, in reality, functions primarily to uphold cellular and organismal health and not end exclusively in cell death. You can find more about autophagy – one of cell biology's most intriguing phenomena – in the focus articles in this catalog, including how it plays a role in cardiac health and how it may play a role in balance sensing in mammals. You can also find a wide selection of our autophagy-related antibodies amongst these pages.

---

## What's Inside

---

**4–11****Focus Articles**

- Apoptosis: The Basics
- Cardiac Autophagy & GABARAPL1
- Our cIAP1 (BIRC2) Antibody: Aiding Research On The CD40 Signaling Complex
- 'Unbalanced' Mice Tip The Balance On Autophagy

---

**12–15****Antibodies:**

14-3-3 → DcR2

---

**18–30****Antibodies:**

DDX3 → ZW10

---

**31****Contact Us**

# FOCUS ARTICLES

## Apoptosis: The Basics

Apoptosis, derived from the Greek word for "falling off" or "dropping off", is defined by distinct morphological and biochemical changes in the cell. These changes are mediated by a family of cysteine aspartic acid-specific proteases or caspases, which are expressed as inactive precursors or zymogens (pro-caspases) and are proteolytically processed to an active state following an apoptotic stimulus. To date, 14 mammalian caspases have been identified and these can be roughly divided into three functional groups: apoptosis initiators (including caspase-2, -9, -8 and -10), apoptosis effectors (including caspase-3, -6 and -7), and cytokine maturation caspases (including caspase-1, -4, -5, -11, -12, -13 and -14).

### Extrinsic Pathway

Caspases may be activated by an extrinsic pathway or by an intrinsic pathway. The extrinsic pathway is initiated by the binding of transmembrane death receptors (Fas, TNF receptor, and TRAIL receptor) with their respective ligands (FasL, TNF, and TRAIL) to activate membrane-proximal caspases

(caspase-8 and -10), which in turn cleave and activate effector caspases such as caspase-3 and -7. This pathway can be regulated by FLIP, which inhibits upstream initiator caspases, and inhibitor of apoptosis proteins (IAPs), which affect both initiator and effector caspases.

### Intrinsic Pathway: The Role Of Mitochondria

The intrinsic pathway requires disruption of the mitochondrial membrane and the release of mitochondrial proteins, such as cytochrome c. Cytochrome c released from the mitochondrial intermembrane space into the cytoplasm, works together with the other two cytosolic protein factors,

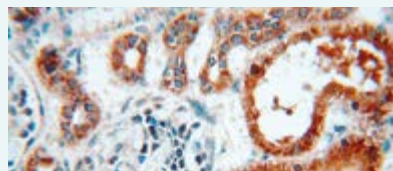
Apaf-1 (apoptotic protease activating factor-1) and procaspase-9, to promote the assembly of a caspase-activating complex termed the apoptosome, which in return induces activation of caspase-9 and thereby initiates the apoptotic caspase cascade.

### Control of Cytochrome C Release

The primary regulatory step for mitochondrial-mediated caspase activation (the intrinsic pathway) is at the level of cytochrome c release. The known regulators of cytochrome c release are the Bcl-2 family proteins. The mammalian Bcl-2 family can be divided into pro-apoptotic and anti-apoptotic members. The pro-apoptotic members include Bax and

Bad. The anti-apoptotic Bcl-2 family members include Bcl-2 and Bcl-XL. Overexpression of the anti-apoptotic molecules blocks cytochrome c release in response to a variety of apoptotic stimuli. On the contrary, the pro-apoptotic members of the Bcl-2 family proteins promote cytochrome c release from the mitochondria.

Visit [www.ptglab.com](http://www.ptglab.com) for more validation images.



Immunohistochemical of paraffin-embedded human kidney using 19677-1-AP CASP3 antibody (19677-1-AP) at a dilution of 1:50 (40x objective).



Immunohistochemical of paraffin-embedded human colon using CASP8 antibody (13423-1-AP) at a dilution of 1:50 (10x objective).



### Cross-talk

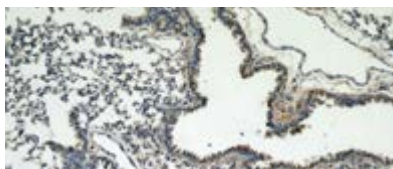
There is considerable cross-talk between the extrinsic and intrinsic pathways. For example, caspase-8 can proteolytically activate Bid, which then facilitates the release of cytochrome c and amplifies the apoptotic signal following death receptor activation. Most anti-cancer agents either

directly induce DNA damage or indirectly induce secondary stress-responsive signaling pathways to trigger apoptosis by activation of the intrinsic apoptotic pathway, and some can simultaneously activate the extrinsic receptor pathway.

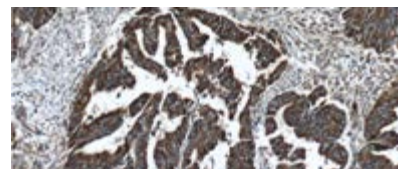
### Apoptosis and Chemotherapy

Most chemotherapeutic drugs kill cancer cells by inducing apoptosis, and many similarities exist in cellular response to drug-induced apoptosis, regardless of

their primary target. Defects in apoptosis signaling commonly contribute to the resistance of tumors to chemotherapy.



Immunohistochemical of paraffin-embedded mouse lung using CASP9 antibody (10380-1-AP) at a dilution of 1:25 (10x objective).

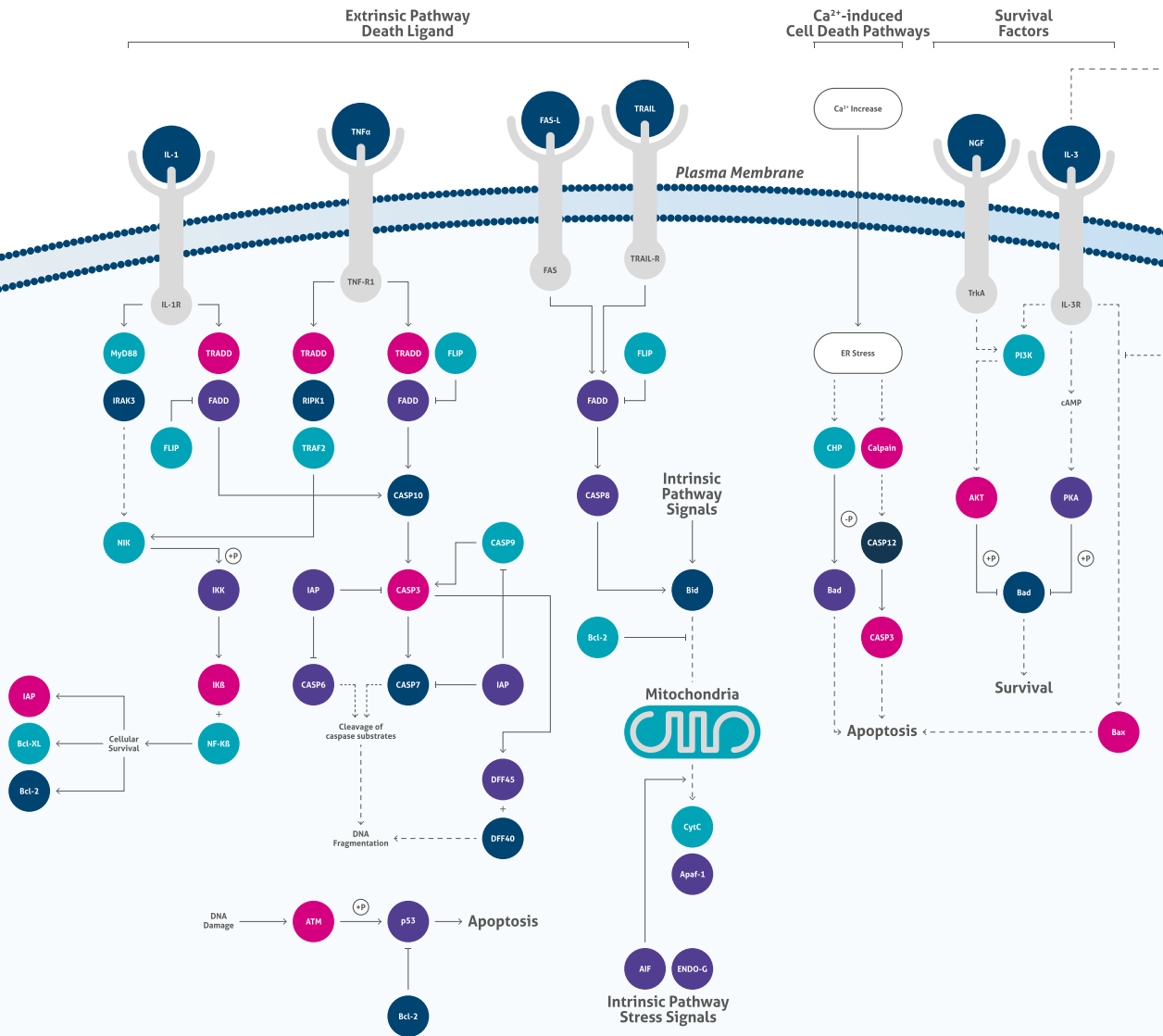


Immunohistochemistry of paraffin-embedded human colon cancer tissue slide using Cytochrome C antibody (10993-1-AP) at a dilution of 1:200 (10x objective). Heat mediated antigen retrieved with Tris-EDTA buffer(pH9).

### Related Antibodies

Antibody Name	Catalog Number	Type	Applications
CASP2	10436-1-AP	Rabbit Poly	ELISA, IHC, WB
CASP3	<b>107</b> 19677-1-AP	Rabbit Poly	ELISA, IF, IHC, IP, WB
CASP4	11856-1-AP	Rabbit Poly	ELISA, IF, IHC, WB
CASP6	<b>1</b> 10198-1-AP	Rabbit Poly	ELISA, IHC, WB
CASP8	<b>38</b> 13423-1-AP	Rabbit Poly	ELISA, IF, IHC, IP, WB
CASP9	<b>81</b> 10380-1-AP	Rabbit Poly	ELISA, FC, IF, IHC, IP, WB
CASP10	14311-1-AP	Rabbit Poly	ELISA, IF, IHC, IP, WB
CASP12	<b>9</b> 55238-1-AP	Rabbit Poly	ELISA, IF, IHC, IP, WB
ciAP1 (BIRC2)	<b>9</b> 10022-1-AP	Rabbit Poly	ELISA, IF, IHC, WB
ciAP2 (BIRC3)	10058-1-AP	Rabbit Poly	ELISA, IHC
FAS	<b>15</b> 13098-1-AP	Rabbit Poly	ELISA, FC, IF, IHC, IP, WB
FAS	60196-1-Ig	Mouse Mono	ELISA, FC, IHC, WB
TNFR1	<b>5</b> 21574-1-AP	Rabbit Poly	ELISA, FC, IF, IHC, WB
TRAIL	<b>4</b> 17235-1-AP	Rabbit Poly	ELISA, IF, IP, WB
TRAILR2	15497-1-AP	Rabbit Poly	ELISA, WB
TRAILR4	<b>2</b> 16781-1-AP	Rabbit Poly	ELISA, IHC, WB

**00** This number shows the amount of times our antibody has been cited in a publication.



## Apoptosis Pathway

Legend	
—	Association
→	Directly Activates
----->	Indirectly Activates
—	Inhibits
(P)	Phosphorylates

Apoptosis, derived from the Greek word for “falling off” or “dropping off” (like leaves from a tree), is defined by distinct morphological and biochemical changes. Apoptosis plays a crucial role not just in normal development, but also in cancer or neurological diseases. Two main pathways lead to apoptosis: 1. the extrinsic pathway via death receptors and 2. the intrinsic pathway via the mitochondria. Both pathways lead to the activation of caspases (cysteine aspartic acid-specific proteases) which are expressed as inactive precursors or zymogens (pro-caspases) and are proteolytically

processed to an active state following an apoptotic stimulus. To date, 14 mammalian caspases have been identified and these can be roughly divided into three functional groups: apoptosis initiators (including caspase-2, -9, -8, -10), apoptosis effectors (including caspase-3, -6, -7), and cytokine maturation caspases (including caspase-1, -4, -5, -11, -12, -13, -14).

## Cardiac Autophagy & GABARAPL1

Autophagy is a pathway for the degradation and recycling of long-lived proteins and cytoplasmic organelles through the lysosome and plays an important role in homeostasis and cell survival. It is required for normal cardiac function and has also been implicated in cardiovascular disease. Proteintech®\* GABARAPL1 rabbit polyclonal antibody has played a key role in this work.

The GABA (A) receptor-associated protein-like 1 (GABARAPL1) was first described as an estrogen regulated gene which shares a high sequence homology with the gabarap gene.

It interacts with the GABAA receptor and tubulin and promotes tubulin polymerization. Previous work has demonstrated that the GABARAP family members (GABARAP, LC3, GATE-16 and Atg8) are not only involved in the transport of proteins or vesicles but are also implicated in various mechanisms such as cell death, cell proliferation and autophagy; during autophagy GABARAPL1 associates with autophagic vesicles and is a useful marker of the autophagic process. These properties of GABARAPL1 have recently been utilized in the study of autophagy in cardiomyocytes.

### FoxO Induces GABARAPL1 Expression

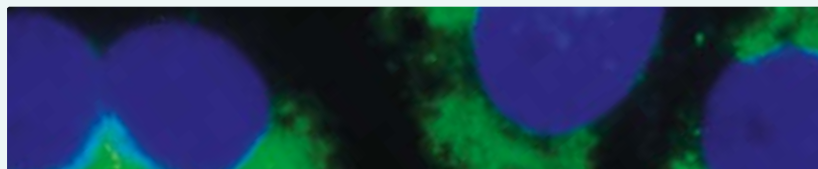
Katherine Yutzey's team at the Cincinnati Children's Medical Center, Ohio, US investigated the role of the FoxO transcription factor in regulating autophagy and cell size in cardiomyocytes. They report that FoxO overexpression reduces cardiomyocyte cell size and induces expression of autophagy pathway markers such as GABARAPL1 and ATG12.

Induction of GABARAPL1 expression was shown by confocal microscopy. They also found that FoxO was directly responsible for GABARAPL1 induction, as the GABARAPL1 promoter was identified as a FoxO binding site through chromatin immunoprecipitation (ChIP) experiments.

### Down-Regulation Of Autophagy After Mechanical Unloading In Heart

Kassiotis et al report in Circulation that markers of autophagy are down-regulated in failing human hearts after mechanical unloading. Mechanical unloading involves a medical device assisting the heart and means a decreased energy demand from the failing heart. The researchers found that protein

expression levels of GABARAPL1, ATG5 and ATG12 were all reduced under mechanical loading conditions, as measured by quantitative western blotting. The authors suggest that autophagy may be an adaptive mechanism in the failing heart and that this phenomenon is attenuated by mechanical unloading.



Immunofluorescent analysis of Chloroquine treated HepG2 cells using ATG8L antibody (11010-1-AP) at a dilution of 1:50 and Alexa Fluor 488-conjugated AffiniPure Goat Anti-Rabbit IgG(H+L).

## Related Antibodies

Antibody Name	Catalog Number	Type	Applications
ATG5	<b>21</b> 10181-2-AP	Rabbit Poly	ELISA, IF, IHC, WB
ATG6	<b>43</b> 11306-1-AP	Rabbit Poly	ELISA, IF, IHC, IP, WB
ATG7	<b>5</b> 10088-2-AP	Rabbit Poly	ELISA, IHC, WB
ATG12	<b>3</b> 11122-1-AP	Rabbit Poly	ELISA, IHC, IP, WB
GABARAPL1	<b>20</b> 11010-1-AP	Rabbit Poly	ELISA, FC, IF, IHC, IP, WB

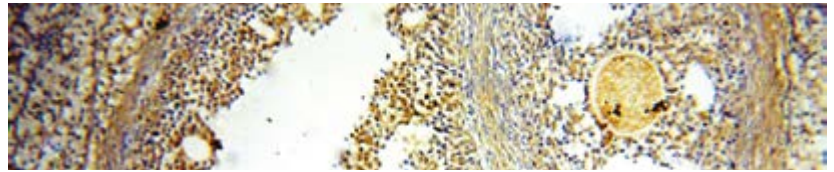
**00** This number shows the amount of times our antibody has been cited in a publication.

## Our cIAP1 (BIRC2) Antibody: Aiding Research On The CD40 Signaling Complex

The inhibitor of apoptosis proteins (IAPs) are a family of anti-apoptotic regulators found in viruses and metazoans. c-IAP1 (10022-1-AP) and c-IAP2 (10058-1-AP) are recruited to tumor necrosis factor receptor (TNFR) 1-associated complexes, such as activated CD40 receptors (12971-1-AP), where they can regulate receptor-mediated signaling and the degradation of TNFR associated factors (TRAFs). CD40 is a member of the TNFR superfamily and is responsible for the efficient activation of cell-mediated and humoral immune responses via activated T cells and B cells respectively.

Our c-IAP1 antibody has featured in various publications investigating CD40 signaling [1-2] FAS-mediated apoptosis in human leukemia

T-cells [3] and NFκB activation [2-3]. The most recent paper [1], published in the Journal of Immunology last year, looks into the signaling properties of a variant form of human CD40 receptor. Authors Anna Peters and Gail Bishop had previously identified this as a gain-of-function allele producing a proline-to-alanine amino acid substitution at position 227 of CD40 (hCD40-P227A). In the current study the authors show that hCD40-P227A binds more TRAF3 (amongst other associated proteins) than wild-type CD40, yet both forms of the receptor bind similar amounts of cIAP1. As a result of higher TRAF3 binding, CD40 signalling changes dramatically causing hyperactivity of the JNK stress/inflammatory response pathway.



Immunohistochemical of paraffin-embedded human ovary using cIAP1 antibody (10022-1-AP) at a dilution of 1:50 (10x objective).

## Related Antibodies

Antibody Name	Catalog Number	Type	Applications
CD154	2 16668-1-AP	Rabbit Poly	ELISA, IF, IHC, IP, WB
cIAP1 (BIRC2)	9 10022-1-AP	Rabbit Poly	ELISA, IF, IHC, WB
cIAP2 (BIRC3)	10058-1-AP	Rabbit Poly	ELISA, IHC
FAS	15 13098-1-AP	Rabbit Poly	ELISA, FC, IF, IHC, IP, WB
FAS	60196-1-Ig	Mouse Mono	ELISA, FC, IHC, WB
TNFR1	5 21574-1-AP	Rabbit Poly	ELISA, FC, IF, IHC, WB
TRAF1	11543-1-AP	Rabbit Poly	ELISA, WB
TRAF3	1 18099-1-AP	Rabbit Poly	ELISA, FC, IP, WB
TRAF4	10083-1-AP	Rabbit Poly	ELISA, IHC, WB
TRAF5	1 12868-1-AP	Rabbit Poly	ELISA, IHC, WB
TRAF6	5 12809-1-AP	Rabbit Poly	ELISA, IF, IHC, WB
TRAF7	1 11780-1-AP	Rabbit Poly	ELISA, IHC, IP, WB

00 This number shows the amount of times our antibody has been cited in a publication.



# THE BENCHMARK IN VALIDATION

Proteintech take complete responsibility for every product they manufacture and ensure that it will work in your hands with an extensive validation process.

Here's what you can expect:

- **Every antibody has been extensively validated by the in-house team in a wide range of applications.**
- **Antibodies now tested in siRNA knockdown to demonstrate specificity.**
- **Original validation data available to researcher on request.**
- **Multi-lingual technical support available online and by email.**

---

[www.ptglab.com](http://www.ptglab.com)



## 'Unbalanced' Mice Tip The Balance On Autophagy

**A research paper featuring two Proteintech antibodies (LC3A: 12135-1-AP, and ATG8: 11010-1-AP) released in July 2010 shed light on how far the reaches of the autophagic process might go – that is beyond the recycling and degradation of cellular material to the higher order functions of mammals such as balance-sensing in mice.**

Autophagy is a cellular, degradative process required for cellular homeostasis and organismal viability in all eukaryotes. This process breaks down interior cell structures – such as defective organelles or internalized pathogens – that are generally too large for other degradative systems.

The process of autophagy engulfs portions of the cell by a double-membrane vesicle called an "autophagosome" – in response to a variety of internal or external instructions – and followed by its fusion with a lysosome containing all the necessary degradative machinery, namely acidic hydrolases. The former's content and inner membrane are then degraded by the hydrolases and lysosomal acidic environment. Essentially,

autophagy is a cell janitor or caretaker, sweeping away any unwanted cellular components or anything that might otherwise cause the cell damage.

When regulated properly, autophagy is a process that promotes normal cellular and developmental processes, whereas its malfunction leads to an array of human diseases and contributes to aging. However, work published last year in *The Journal of Clinical Investigation* [1] suggests the influence of autophagy extends beyond the cellular level and may have a role in higher-order processes of organismal physiology – in other words, maintenance of cell homeostasis might not be the only balancing act in which autophagy plays a role...

### 'Unbalanced' Mice

A team lead by Carlos López-Otín at the University of Oviedo, Spain [1], investigated a novel role for autophagy in mouse sense of balance – or equilibrioception, to give it its more technical name. At the molecular level, the researchers noted that mice deficient in autophagin-1 protease (Atg4b<sup>-/-</sup>), encoded by the *Atg4b* gene, had increased levels of p62 protein along with an accumulation of ubiquitinated (degradation-marked) proteins when compared to control mice. (p62 protein levels negatively correlate with autophagic flux and are a good indication of reduced autophagy.)

López-Otín and colleagues subsequently discovered that autophagy reduction in these mice occurred through defective proteolytic

processing of the autophagosome component LC3; ultimately, this compromised the rate of autophagosome maturation. Yet, it was not the molecular changes that most struck the researchers about the mutant mice, it was their behavior. They not only had substantial reduction of autophagic activity, but also displayed some unusual behavioral patterns, characteristic of inner-ear disorders.

López-Otín and his fellow researchers noted that *Atg4b*-null mice maintained a tilted position of the head, adopted circling behaviors and had a tendency to crawl and walk backwards when placed outside their cages. The mice also routinely failed both balance testing on a rota-rod treadmill and swim tests.

You can place your order online, by email, or fax.

### An Unusual Discovery

Investigating a variety of potential explanations, the Oviedo team found that the mice did not exhibit defects such as increased apoptosis or show any signs of central nervous system damage which might explain their "unbalanced" behavior. Neither did they find any gross morphological defects upon examination of the middle- and inner-ear. However, upon closer inspection of the *Atg4b*<sup>-/-</sup> inner-ear, they found defects in the development of the otoconia – very useful and fascinating components of the balance system in the inner ear.

Otoconia are small, organic crystals of calcium carbonate that coat the saccule and utricle of the equilibrioception vestibular system. They are required for the spatial detection of gravity and linear acceleration, stimulating the cilia of the saccule and utricle epithelium by their movement relative to their surrounding, gelatinous supporting substrate called the cupula. The importance of otoconia in balance-sensing is apparent in people with

benign paroxysmal positional vertigo (BPPV). BPPV is a disorder in which the changing of the head's position with respect to gravity leads to sudden vertigo; it results from the dislodging of otoconia from the saccule and utricle and their becoming trapped in other vestibular structures of the inner-ear.

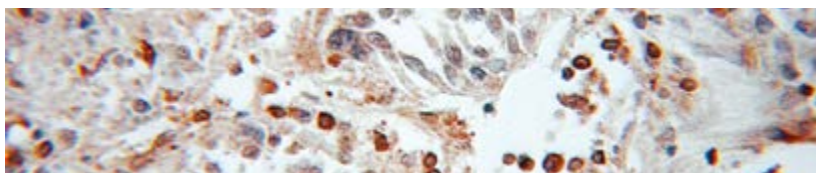
What López-Otín and his colleagues found in the case of *Atg4b*<sup>-/-</sup> mice was that many totally lacked otoconia in the utricle and saccule, whereas others presented mildly abnormal or giant otoconia. Utricular and saccular regions from affected *Atg4b*<sup>-/-</sup> mice presented an accumulation of abnormal extracellular vesicle-like structures thought to be the precursors of mature otoconial crystals. This indicated that the mice had problems secreting the necessary otoconial core proteins into the vestibular lumen. This prompted López-Otín and his team to look at alterations in vesicle sorting complexes and whether aberrations in autophagy might affect their workings.

### Solving The Puzzle

The Oviedo team was given clues on where to begin their search by previously established murine models of balance disorders, well-characterized for their underlying mutations. Some of these strains showed otoconial abnormalities due to deficiencies in components of the Bloc-1 and Ap-3 vesicle sorting complexes [2] and it was these two protein complexes that now came under scrutiny in the López-Otín lab's studies. When the lab pharmacologically inhibited autophagy in cell lines lacking either Atg4b  $-/-$  and Atg5  $-/-$  for prolonged periods of time, they found a clear reduction in the mRNA levels of several subunits of both Bloc-1 and Ap-3. Consistent with this finding, other researchers had recently proposed a role for autophagy in

melanogenesis, another process for which the activity of Ap-3 and Bloc-1 sorting complexes are essential [3].

With this work, López-Otín and his lab have not only uncovered new features of balance-sensing in higher mammals but also, fundamentally, they have emphasized a role for autophagy that extends beyond the individual cell. As peer researchers Andreas Till and Suresh Subramani from University of California San Diego, La Jolla, CA, write in their ensuing review: "The intriguing aspect of this work is that an autophagy block impairs the secretion and assembly of otoconial proteins, emphasizing a role for autophagy in functions distinct from macromolecule degradation.



Immunohistochemical of paraffin-embedded human ovary tumor using ATG8L antibody (11010-1-AP) at a dilution of 1:50 (10x objective).

### Related Antibodies

Antibody Name	Catalog Number	Type	Applications
GABRAPL1	20 11010-1-AP	Rabbit Poly	ELISA, FC, IF, IHC, IP, WB
LC3	20 12135-1-AP	Rabbit Poly	ELISA, IF, IHC, WB

20 This number shows the amount of times our antibody has been cited in a publication.

# OPTIMIZE YOUR ANTIBODY EXPERIMENTS WITH PROTEINTECH

Request your free technical guide from [ptglab.com](http://ptglab.com).



14-3-3  
→ ARMET

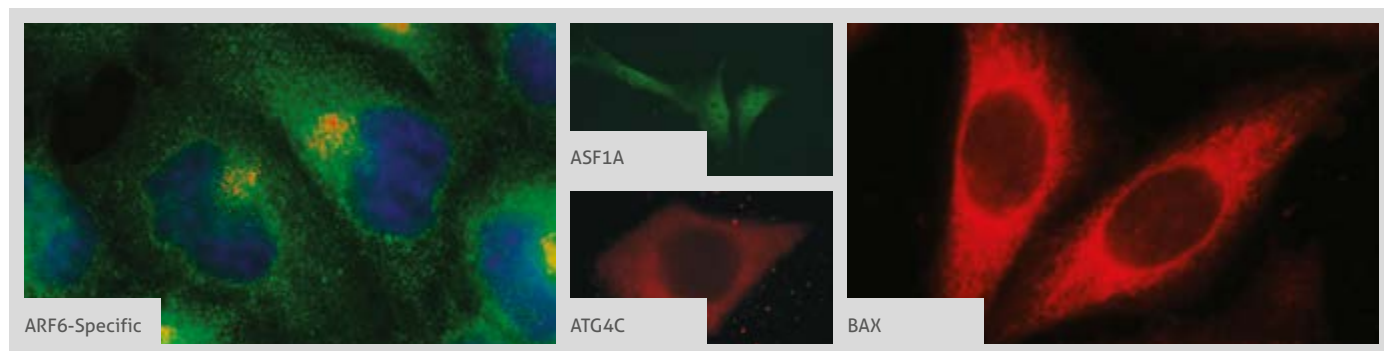
# ANTIBODY PRODUCT LIST

Antibody Name	Cat. No.	Type	Applications
14-3-3	14503-1-AP	Rabbit Poly	ELISA, FC, IF, IHC, IP, WB
14-3-3	66061-1-Ig	Mouse Mono	ELISA, FC, IF, IHC, WB
14-3-3 epsilon	11648-2-AP	Rabbit Poly	ELISA, FC, IF, IHC, IP, WB
14-3-3 GAMMA	12381-1-AP	Rabbit Poly	ELISA, IF, IHC, IP, WB
AATF	10282-1-AP	Rabbit Poly	ELISA, IF, WB
ABL2	17693-1-AP	Rabbit Poly	ELISA, IF, IHC, IP, WB
ACAA2	3 11111-1-AP	Rabbit Poly	ELISA, IHC, WB
ACHE	17975-1-AP	Rabbit Poly	ELISA, IHC, WB
ACSL5	4 15708-1-AP	Rabbit Poly	ELISA, IP, WB
ACTL6A	3 10341-1-AP	Rabbit Poly	ELISA, IHC, IP, WB
ACVR1C	12610-1-AP	Rabbit Poly	ELISA, WB
ADAM17	24620-1-AP	Rabbit Poly	ELISA, IHC, WB
ADAM17-Specific	20259-1-AP	Rabbit Poly	ELISA, IHC, WB
ADAMTSL4	15304-1-AP	Rabbit Poly	ELISA, IHC, IP, WB
ADAR1	14330-1-AP	Rabbit Poly	ELISA, IF, IHC, IP, WB
AEG-1/MTDH	20 13860-1-AP	Rabbit Poly	ELISA, IF, IHC, IP, WB
AGAP2	14690-1-AP	Rabbit Poly	ELISA, IF, IHC, IP, WB
AIFM3	14778-1-AP	Rabbit Poly	ELISA, IHC, WB
AIM2	2 20590-1-AP	Rabbit Poly	ELISA, IHC, WB
AKT1	60203-1-Ig	Mouse Mono	ELISA, FC, IF, IHC, IP, WB
AKT2	2 17609-1-AP	Rabbit Poly	ELISA, IHC, IP, WB
AKT3	3 21641-1-AP	Rabbit Poly	ELISA, IHC, WB
Alpha adducin	10791-1-AP	Rabbit Poly	ELISA, IHC, WB
AMBRA1	13762-1-AP	Rabbit Poly	ELISA, IF, IHC, WB
AMIGO2	14076-1-AP	Rabbit Poly	ELISA, WB
AMPK alpha 1	8 10929-2-AP	Rabbit Poly	ELISA, IF, IHC, WB

Antibody Name	Cat. No.	Type	Applications
AMPK alpha 2	2 18167-1-AP	Rabbit Poly	ELISA, IF, IHC, IP, WB
AMPK beta 1	10308-1-AP	Rabbit Poly	ELISA, IF, IP, WB
AMPK beta 2	14429-1-AP	Rabbit Poly	ELISA, WB
AMPK gamma 1	10290-1-AP	Rabbit Poly	ELISA, IF, IHC, WB
AMPK gamma 2	12568-1-AP	Rabbit Poly	ELISA, IF, IHC, WB
androgen receptor	22089-1-AP	Rabbit Poly	ELISA, IHC, WB
androgen receptor	22576-1-AP	Rabbit Poly	ELISA, IF, IP, WB
ANGPTL4	2 18374-1-AP	Rabbit Poly	ELISA, IF, IHC, IP, WB
ANKRD1	3 11427-1-AP	Rabbit Poly	ELISA, WB
ANP32A	15810-1-AP	Rabbit Poly	ELISA, IF, IHC, WB
APAF1	5 21710-1-AP	Rabbit Poly	ELISA, IF, IHC, IP, WB
APIP	12089-2-AP	Rabbit Poly	ELISA, WB
APLP1	3 12305-2-AP	Rabbit Poly	ELISA, IHC, WB
APP	10524-1-AP	Rabbit Poly	ELISA, WB
APPBP1	14863-1-AP	Rabbit Poly	ELISA, IP, WB
APPL1	2 12639-1-AP	Rabbit Poly	ELISA, IF, IHC, IP, WB
APPL1	19885-1-AP	Rabbit Poly	ELISA, IF, IHC, IP, WB
ARD1A	14803-1-AP	Rabbit Poly	ELISA, IF, IHC, IP, WB
ARF6 -Specific	2 20225-1-AP	Rabbit Poly	ELISA, IF, IHC, WB
ARHGAP1	11169-1-AP	Rabbit Poly	ELISA, IF, IHC, WB
ARHGAP10	55139-1-AP	Rabbit Poly	ELISA, IHC, WB
ARHGEF7	14092-1-AP	Rabbit Poly	ELISA, IF, IP, WB
ARID3A	2 14068-1-AP	Rabbit Poly	ELISA, IF, IHC, IP, WB
ARK5	22723-1-AP	Rabbit Poly	ELISA, IHC, WB
ARMC10	20506-1-AP	Rabbit Poly	ELISA, IF, IHC, IP, WB
ARMET	10869-1-AP	Rabbit Poly	ELISA, WB

00 This number shows the amount of times our antibody has been cited in a publication.

More validation images available on our website.



Antibody Name	Cat. No.	Type	Applications
ARMETL1	25035-1-AP	Rabbit Poly	ELISA, IHC, WB
ARSB	13227-1-AP	Rabbit Poly	ELISA, IHC, WB
ASF1A	<b>2</b> 10784-1-AP	Rabbit Poly	ELISA, IF, IHC, IP, WB
ASF1A	22259-1-AP	Rabbit Poly	ELISA, IF, WB
ASK1	14385-1-AP	Rabbit Poly	ELISA, WB
ATAD5	24954-1-AP	Rabbit Poly	ELISA, WB
ATF2	11908-1-AP	Rabbit Poly	ELISA, IF, WB
ATF2-Specific	14834-1-AP	Rabbit Poly	ELISA, IHC, WB
ATF4	<b>3</b> 60035-1-Ig	Mouse Mono	ChIP, ELISA, IF, IHC, WB
ATF4	<b>41</b> 10835-1-AP	Rabbit Poly	ELISA, FC, IHC, IP, WB
ATF6	<b>6</b> 24169-1-AP	Rabbit Poly	ELISA, IF, IHC, IP, WB
ATF6B	<b>4</b> 15794-1-AP	Rabbit Poly	ELISA, IF, IHC, IP, WB
ATG12	<b>3</b> 11122-1-AP	Rabbit Poly	ELISA, IHC, IP, WB
ATG12	11264-1-AP	Rabbit Poly	ELISA, IF, IHC, WB
ATG13	18258-1-AP	Rabbit Poly	ELISA, IHC, IP, WB
ATG16L2	24322-1-AP	Rabbit Poly	ELISA, IP, WB
ATG3	11262-2-AP	Rabbit Poly	ELISA, IF, IHC, WB
ATG4C	20382-1-AP	Rabbit Poly	ELISA, IF, IHC, WB
ATG4D	16924-1-AP	Rabbit Poly	ELISA, WB
ATG5	<b>21</b> 10181-2-AP	Rabbit Poly	ELISA, IF, IHC, WB
ATG5	60061-1-Ig	Mouse Mono	ELISA, WB
ATG7	<b>5</b> 10088-2-AP	Rabbit Poly	ELISA, IHC, WB
ATR	<b>3</b> 19787-1-AP	Rabbit Poly	ELISA, WB
AXIN1	<b>2</b> 16541-1-AP	Rabbit Poly	ELISA, WB
AXL	13196-1-AP	Rabbit Poly	ELISA, FC, IP, WB
AXUD1	18162-1-AP	Rabbit Poly	ELISA, WB
B23	<b>3</b> 10306-1-AP	Rabbit Poly	ELISA, IF, IHC, IP, WB
BAD	<b>8</b> 10435-1-AP	Rabbit Poly	ELISA, IHC, WB
BAG1	19064-1-AP	Rabbit Poly	ELISA, IF, IHC, IP, WB
BAG1L-specific	16148-1-AP	Rabbit Poly	ELISA, IF
BAG1S-specific	16150-1-AP	Rabbit Poly	ELISA, IHC, WB

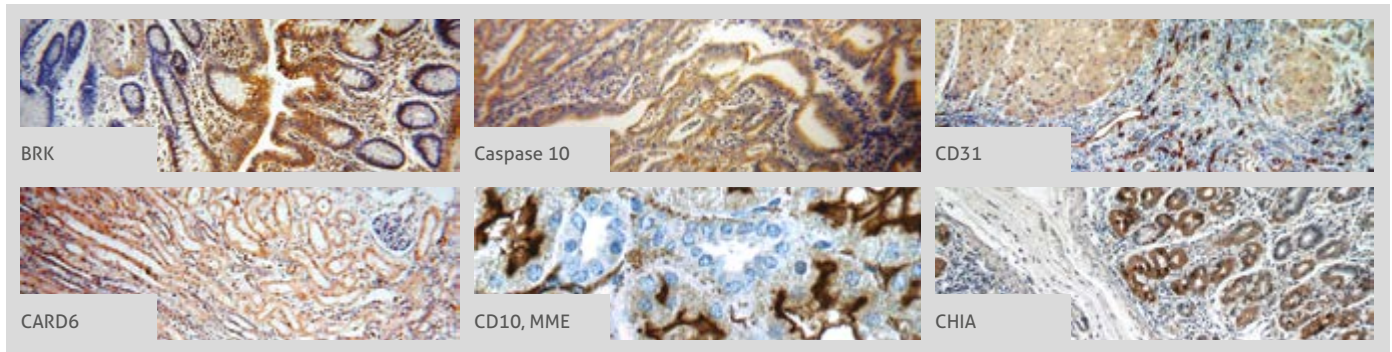
Antibody Name	Cat. No.	Type	Applications
BAG3	<b>23</b> 10599-1-AP	Rabbit Poly	ELISA, IF, IHC, IP, WB
BAK	<b>23</b> 14673-1-AP	Rabbit Poly	ELISA, IF, IHC, WB
BAP29	15796-1-AP	Rabbit Poly	ELISA, FC, IF, IHC, WB
BAP31	<b>3</b> 11200-1-AP	Rabbit Poly	ELISA, FC, IF, IHC, IP, WB
Barkor	24412-1-AP	Rabbit Poly	ELISA, IF, IHC, WB
Barkor-Specific	<b>3</b> 19491-1-AP	Rabbit Poly	ELISA, IF, IP, WB
BAX	<b>11</b> 23931-1-AP	Rabbit Poly	ELISA, IHC, IP, WB
BAX	<b>156</b> 50599-2-Ig	Rabbit Poly	ELISA, FC, IF, IHC, IP, WB
BAX	<b>3</b> 60267-1-Ig	Mouse Mono	ELISA, IF, IHC, WB
BCL10	17732-1-AP	Rabbit Poly	ELISA, IHC, WB
BCL10	<b>2</b> 50180-1-AP	Rabbit Poly	ELISA, IHC, WB
BCL2	<b>161</b> 12789-1-AP	Rabbit Poly	ELISA, FC, IF, IHC, IP, WB
BCL2	<b>5</b> 60178-1-Ig	Mouse Mono	ELISA, FC, IHC, IP, WB
BCL2A1	<b>2</b> 12223-1-AP	Rabbit Poly	ELISA, WB
BCL2L1	<b>46</b> 10783-1-AP	Rabbit Poly	ELISA, FC, IF, IHC, IP, WB
BCL2L1	<b>2</b> 66020-1-Ig	Mouse Mono	ELISA, IF, IHC, WB
BCL2L10	18114-1-AP	Rabbit Poly	ELISA, IHC, WB
BCL2L12	21969-1-AP	Rabbit Poly	ELISA, IF, IHC, WB
BCL2L14	12846-1-AP	Rabbit Poly	ELISA, IHC, WB
BCL6	60184-1-Ig	Mouse Mono	ELISA, WB
Beclin 1	<b>43</b> 11306-1-AP	Rabbit Poly	ELISA, IF, IHC, IP, WB
Beta-Arrestin 1	<b>2</b> 15361-1-AP	Rabbit Poly	ELISA, IF, IHC, IP, WB
Beta-Arrestin 2	<b>2</b> 10171-1-AP	Rabbit Poly	ELISA, IF, IHC, IP, WB
beta-Catenin	<b>43</b> 51067-2-AP	Rabbit Poly	ELISA, IF, IHC, IP, WB
BEX2	12390-1-AP	Rabbit Poly	ELISA, IHC, WB
BID	<b>18</b> 10988-1-AP	Rabbit Poly	ELISA, IF, IHC, IP, WB
BID	60301-1-Ig	Mouse Mono	ELISA, IF, WB
Bif-1	15422-1-AP	Rabbit Poly	ELISA, IF, IHC, WB
BIRC3	<b>3</b> 24304-1-AP	Rabbit Poly	ELISA, IF, IHC, IP, WB
BLK	10510-1-AP	Rabbit Poly	ELISA, IHC, IP, WB

**00** This number shows the amount of times our antibody has been cited in a publication.



BLNK  
→ CHIA

More validation images available on our website. 

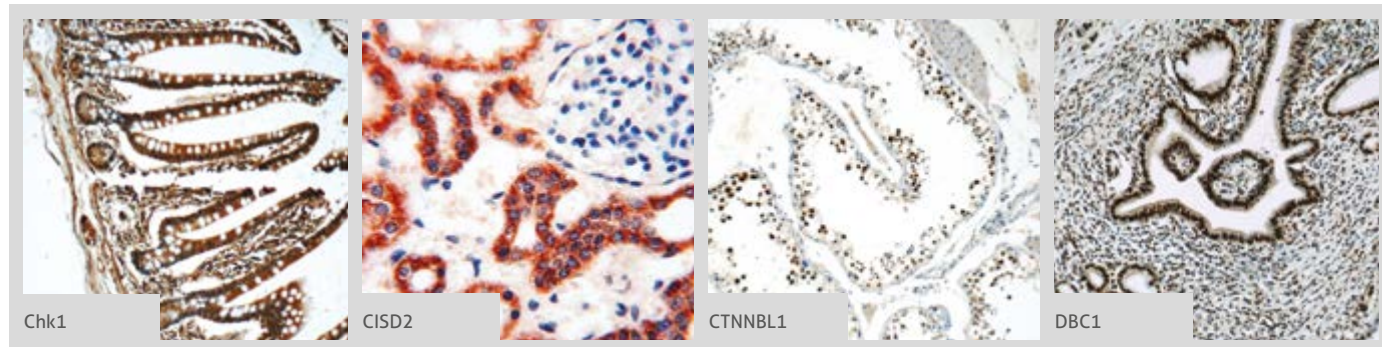


Antibody Name	Cat. No.	Type	Applications
BLNK	10855-1-AP	Rabbit Poly	ELISA, IF, IHC, WB
BMF	18298-1-AP	Rabbit Poly	ELISA, WB
BNIP1	<b>2</b> 15964-1-AP	Rabbit Poly	ELISA, IF, IP, WB
BRD7	<b>8</b> 51009-2-AP	Rabbit Poly	ChIP, CoIP, ELISA, IF, IHC, WB
BRD8	10476-1-AP	Rabbit Poly	ELISA, IF, IP, WB
BRD8	60121-1-Ig	Mouse Mono	ELISA, IF, IHC, WB
BRE	11702-1-AP	Rabbit Poly	ELISA, IHC, IP, WB
BRK	<b>2</b> 18697-1-AP	Rabbit Poly	ELISA, IF, IHC, IP, WB
BRSK2	<b>2</b> 11589-1-AP	Rabbit Poly	ELISA, IHC, WB
BTK	21581-1-AP	Rabbit Poly	ELISA, IP, WB
BubR1	<b>2</b> 11504-2-AP	Rabbit Poly	ELISA, IF, IHC, WB
C18orf21	24977-1-AP	Rabbit Poly	ELISA, IHC, WB
C1D	10711-1-AP	Rabbit Poly	ELISA, IHC
C1QBP	24474-1-AP	Rabbit Poly	ELISA, IF, IHC, WB
C4orf14	20323-1-AP	Rabbit Poly	ELISA, IHC, WB
CADM1	14335-1-AP	Rabbit Poly	ELISA, WB
CALHM1	22042-1-AP	Rabbit Poly	ELISA, IHC, WB
calreticulin	<b>7</b> 10292-1-AP	Rabbit Poly	ELISA, IF, IHC, WB
CAMKK1	13624-1-AP	Rabbit Poly	ELISA, IHC, IP, WB
CAMLG	23327-1-AP	Rabbit Poly	ELISA, WB
CAPRIN2	20766-1-AP	Rabbit Poly	ELISA, IF, IP, WB
CARD14	10400-1-AP	Rabbit Poly	ELISA, IP, WB
CARD6	<b>18029-1-AP</b>	Rabbit Poly	ELISA, IHC, WB
CARD8	14516-1-AP	Rabbit Poly	ELISA, IF, IHC
Casein Kinase 1 delta	<b>2</b> 14388-1-AP	Rabbit Poly	ELISA, IF, IP, WB
Caspase 1	<b>4</b> 22915-1-AP	Rabbit Poly	ELISA, IF, IHC, WB
Caspase 10	<b>14311-1-AP</b>	Rabbit Poly	ELISA, IF, IHC, IP, WB
Caspase 2	10436-1-AP	Rabbit Poly	ELISA, IHC, WB
Caspase 2	24777-1-AP	Rabbit Poly	ELISA, IF, WB
Caspase 3	<b>107</b> 19677-1-AP	Rabbit Poly	ELISA, IF, IHC, IP, WB

Antibody Name	Cat. No.	Type	Applications
Caspase 3, P17	<b>29</b> 25546-1-AP	Rabbit Poly	ELISA, FC, IF, IHC, WB
Caspase 4	11856-1-AP	Rabbit Poly	ELISA, IF, IHC, WB
Caspase 6	10198-1-AP	Rabbit Poly	ELISA, IHC, WB
Caspase 8	<b>38</b> 13423-1-AP	Rabbit Poly	ELISA, IF, IHC, IP, WB
Caspase 8	<b>3</b> 66093-1-Ig	Mouse Mono	ELISA, IF, IHC, IP, WB
Caspase 9	<b>81</b> 10380-1-AP	Rabbit Poly	ELISA, FC, IF, IHC, IP, WB
Caspase 9	23821-1-AP	Rabbit Poly	ELISA, IF, IHC, WB
Caspase 9	<b>3</b> 66169-1-Ig	Mouse Mono	ELISA, IF, IHC, IP, WB
CCDC5	11094-2-AP	Rabbit Poly	ELISA, IHC, IP, WB
CD10, MME	<b>23782-1-AP</b>	Rabbit Poly	ELISA, FC, IHC
CD24	10600-1-AP	Rabbit Poly	ELISA, IHC, WB
CD24	18330-1-AP	Rabbit Poly	ELISA, WB
CD27	11121-1-AP	Rabbit Poly	ELISA, FC, WB
CD31	<b>13</b> 11265-1-AP	Rabbit Poly	ELISA, FC, IF, IHC, IP, WB
CD31	<b>2</b> 66065-1-Ig	Mouse Mono	ELISA, IF, IHC, WB
CD33	17425-1-AP	Rabbit Poly	ELISA, FC, IF, IHC, WB
CD79A	22349-1-AP	Rabbit Poly	ELISA, IHC, WB
CDA1	<b>4</b> 12087-2-AP	Rabbit Poly	ELISA, IF, IHC, IP, WB
CDC2L6	13761-1-AP	Rabbit Poly	ELISA, WB
CDCA7	<b>2</b> 15249-1-AP	Rabbit Poly	ELISA, IF, WB
CDK1	10762-1-AP	Rabbit Poly	ELISA, WB
CDK1-Specific	<b>16</b> 19532-1-AP	Rabbit Poly	ELISA, IF, IHC, WB
CDK2	<b>17</b> 10122-1-AP	Rabbit Poly	ELISA, FC, IF, IHC, IP, WB
CDK5	10430-1-AP	Rabbit Poly	ELISA, IF, WB
CDK6	<b>13</b> 14052-1-AP	Rabbit Poly	ELISA, IF, IHC, IP, WB
CDK6	<b>3</b> 19117-1-AP	Rabbit Poly	ELISA, IP, WB
Centromere protein R	<b>2</b> 10743-1-AP	Rabbit Poly	ELISA, IF, IHC, IP, WB
Ceruloplasmin	21131-1-AP	Rabbit Poly	ELISA, WB
Ceruloplasmin	66156-1-Ig	Mouse Mono	ELISA, IHC, WB
CHIA	<b>21484-1-AP</b>	Rabbit Poly	ELISA, IF, IHC, WB

**00** This number shows the amount of times our antibody has been cited in a publication.

More validation images available on our website.



Antibody Name	Cat. No.	Type	Applications
Chk1	9 10362-1-AP	Rabbit Poly	ELISA, FC, IF, WB
Chk1	60277-1-Ig	Mouse Mono	ELISA, IHC, WB
Chk2	4 13954-1-AP	Rabbit Poly	ELISA, IF, IP, WB
CHOP	27 15204-1-AP	Rabbit Poly	ELISA, FC, IHC, WB
CHOP; GADD153	60304-1-Ig	Mouse Mono	ELISA, WB
CHP	15834-1-AP	Rabbit Poly	ELISA
ciAP1	9 10022-1-AP	Rabbit Poly	ELISA, IF, IHC, WB
ciAP2	10058-1-AP	Rabbit Poly	ELISA, IHC
CIAPIN1	12638-1-AP	Rabbit Poly	ELISA, IF, WB
CIB1	4 11823-1-AP	Rabbit Poly	ELISA, IF, IHC, IP, WB
CISD2	7 13318-1-AP	Rabbit Poly	ELISA, FC, IF, IHC, IP, WB
CISD2-Specific	66082-1-Ig	Mouse Mono	ELISA, IF, IHC, WB
CITED1	10466-1-AP	Rabbit Poly	ELISA
CKAP2	25486-1-AP	Rabbit Poly	ELISA, IF, WB
Claudin 1	3 13050-1-AP	Rabbit Poly	ELISA, IHC, WB
CLSPN	23206-1-AP	Rabbit Poly	ELISA, IF, IP, WB
Clusterin	12289-1-AP	Rabbit Poly	ELISA, IHC, IP, WB
Clusterin	66109-1-Ig	Mouse Mono	ELISA, IHC, WB
CMTM8	15039-1-AP	Rabbit Poly	ELISA, IHC, IP, WB
c-Myc	6 10057-1-AP	Rabbit Poly	ELISA, WB
c-MYC	22 10828-1-AP	Rabbit Poly	ELISA, IF, IHC, IP, WB
COL4A3BP	15191-1-AP	Rabbit Poly	ELISA, IHC, IP, WB
COL8A1	17251-1-AP	Rabbit Poly	ELISA, IF, IP, WB
CREB3	11275-1-AP	Rabbit Poly	ELISA, IF, IHC, IP, WB
CREB3L1, OASIS	4 11235-2-AP	Rabbit Poly	ELISA, IF, IHC, WB
CREB3L4	13630-1-AP	Rabbit Poly	ELISA, IF, WB
CSE1L	22219-1-AP	Rabbit Poly	ELISA, IF, IHC, IP, WB
CSNK2A1	10992-1-AP	Rabbit Poly	ELISA, IF, IHC, IP, WB
CSNK2A2	10606-1-AP	Rabbit Poly	ELISA, IF, IP, WB
c-SRC	60315-1-Ig	Mouse Mono	ELISA, IF, IHC, WB

Antibody Name	Cat. No.	Type	Applications
CTBP1	10972-1-AP	Rabbit Poly	ELISA, IF, IHC, IP, WB
CTGF	23903-1-AP	Rabbit Poly	ELISA, WB
CTGF	4 23936-1-AP	Rabbit Poly	ELISA, IF, IHC, WB
CTNNB1	13665-1-AP	Rabbit Poly	ELISA, IHC, WB
CUGBP2	12921-1-AP	Rabbit Poly	ELISA, IHC, IP, WB
CUL3	11107-1-AP	Rabbit Poly	ELISA, IF, IHC, WB
CXCL8/IL8	2 60141-2-Ig	Mouse Mono	ELISA, IHC, WB
CXCR3B-specific	5 60065-1-Ig	Mouse Mono	ELISA, FC, IF, IHC, WB
CXCR7	20423-1-AP	Rabbit Poly	ELISA, FC, IF, IP, WB
CXCR7	6 51024-1-AP	Rabbit Poly	ELISA, FC, IF, IHC, WB
CXCR7	60216-1-Ig	Mouse Mono	ELISA, IHC, WB
CXCR7-Specific	14840-1-AP	Rabbit Poly	ELISA, IHC, IP, WB
CYFIP2	16011-1-AP	Rabbit Poly	ELISA, IHC, IP, WB
CYLD	3 11110-1-AP	Rabbit Poly	ELISA, IHC, IP, WB
Cytochrome c	44 10993-1-AP	Rabbit Poly	ELISA, IF, IHC, WB
Cytokeratin 18	22 10830-1-AP	Rabbit Poly	ELISA, FC, IF, IHC, IP, WB
Cytokeratin 18	18708-1-AP	Rabbit Poly	ELISA, IF, IHC, IP, WB
Cytokeratin 20	17329-1-AP	Rabbit Poly	ELISA, IF, IHC, WB
Cytokeratin 20	60183-1-Ig	Mouse Mono	ELISA, IHC, WB
DAB2	10109-2-AP	Rabbit Poly	ELISA, FC, IF, IHC, IP, WB
DAB2IP	23582-1-AP	Rabbit Poly	ELISA, IP, WB
DAP3	10276-1-AP	Rabbit Poly	ELISA, WB
DAP5	17728-1-AP	Rabbit Poly	ELISA, IP, WB
DAPK1	25136-1-AP	Rabbit Poly	ELISA, IF, WB
DAPK2-Specific	20048-1-AP	Rabbit Poly	ELISA, IF, WB
DAPK2-Specific	20048-1-AP	Rabbit Poly	ELISA, IF, WB
DBC1	22638-1-AP	Rabbit Poly	ELISA, IF, IHC, IP, WB
DBNL	2 13015-1-AP	Rabbit Poly	ELISA, IF, IHC, IP, WB
DCLRE1B	13203-1-AP	Rabbit Poly	ELISA, IF, WB
DcR2	2 16781-1-AP	Rabbit Poly	ELISA, IHC, WB

00 This number shows the amount of times our antibody has been cited in a publication.

# THE BENCHMARK IN ANTIBODIES

Since the day it was founded, Proteintech has been making all of its products to the highest standards possible whilst taking complete responsibility for the quality of each product.

- Proteintech makes every single antibody in its 12,000+ catalog.
- Each Proteintech product is unique and cannot be bought under a different label.
- Antibodies are tested with siRNA treated samples to demonstrate specificity.
- It works in every single species and application or get a full money-back refund.

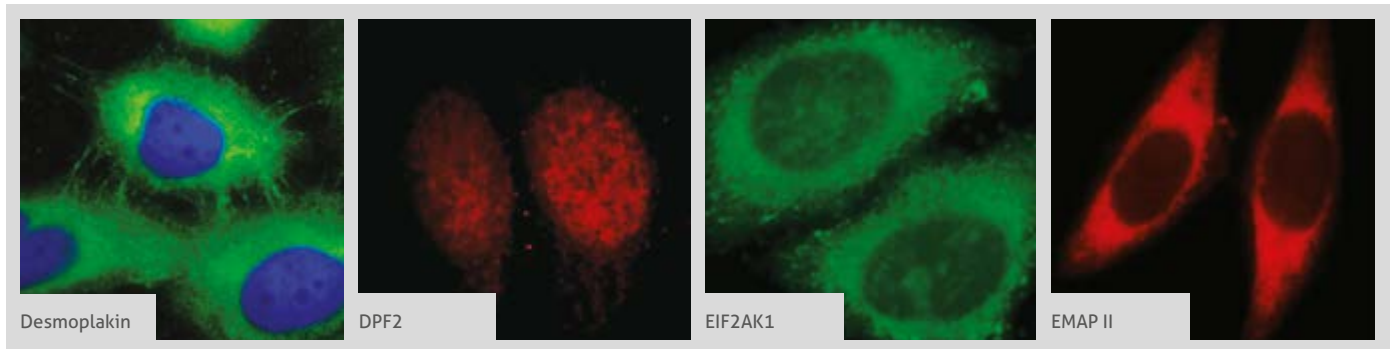
**Proteintech has over 12,000 antibodies in its extensive catalog, all fully validated and available for next day delivery.**







DDX3  
→ ERO1L

More validation images available on our website. 



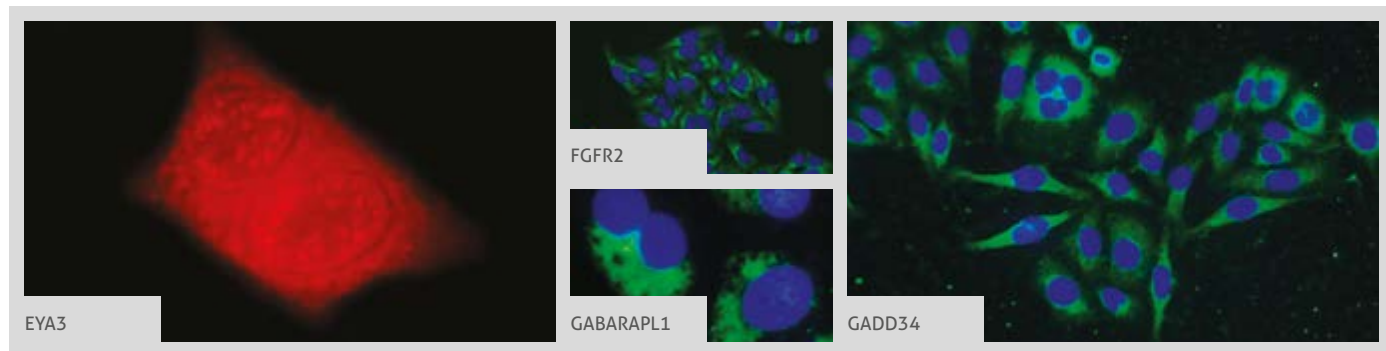
Antibody Name	Cat. No.	Type	Applications
DDX3	11115-1-AP	Rabbit Poly	ELISA, IF, IHC, IP, WB
DDX5, p68	10804-1-AP	Rabbit Poly	ELISA, IHC, WB
DEDD	10816-1-AP	Rabbit Poly	ELISA, IHC
DEDD2	14574-1-AP	Rabbit Poly	ELISA, IHC, WB
Desmoplakin	 25318-1-AP	Rabbit Poly	ELISA, IF, IHC, WB
DFF45/DFFA	10191-2-AP	Rabbit Poly	ELISA, IF, IHC, IP, WB
DFNA5	13075-1-AP	Rabbit Poly	ELISA, WB
DIABLO	10434-1-AP	Rabbit Poly	ELISA, IHC, IP, WB
DIDO1	10183-1-AP	Rabbit Poly	ELISA, FC, IF, WB
DMAP1	 10411-1-AP	Rabbit Poly	ELISA, IF, IP, WB
DNAJC10	 13101-1-AP	Rabbit Poly	ELISA, IF, IHC, WB
DNASE1L3	11330-1-AP	Rabbit Poly	ELISA, WB
DNASE2	15934-1-AP	Rabbit Poly	ELISA, IP, WB
DOCK180	23421-1-AP	Rabbit Poly	ELISA, IF, IHC, IP, WB
DOCK180-Specific	20244-1-AP	Rabbit Poly	ELISA, IF, WB
DPF2	 12111-1-AP	Rabbit Poly	ELISA, IF, IHC, IP, WB
DR3	55397-1-AP	Rabbit Poly	ELISA, WB
DR4	24063-1-AP	Rabbit Poly	ELISA, WB
DR6	60107-1-Ig	Mouse Mono	ELISA, WB
DSG2	 21880-1-AP	Rabbit Poly	ELISA, IF, IP, WB
DUSP13	10909-1-AP	Rabbit Poly	ELISA, IHC, WB
DUSP22	16514-1-AP	Rabbit Poly	ELISA, IHC, WB
DUSP22	51005-2-AP	Rabbit Poly	ELISA, IHC, WB
Dynamitin	10030-2-AP	Rabbit Poly	ELISA, IHC, IP, WB
Dynamitin	10031-2-AP	Rabbit Poly	ELISA, IP, WB
Dynamitin	10032-1-AP	Rabbit Poly	ELISA, WB
Dynamitin	11361-1-AP	Rabbit Poly	ELISA, FC, IHC, WB
Dynamitin	60257-1-Ig	Mouse Mono	ELISA, IHC, WB
DYNLL2	16811-1-AP	Rabbit Poly	ELISA, WB
E2F1	 12171-1-AP	Rabbit Poly	ELISA, IHC, WB
E2F4	10923-1-AP	Rabbit Poly	ELISA, IHC, IP, WB

Antibody Name	Cat. No.	Type	Applications
E2F7	24489-1-AP	Rabbit Poly	ELISA, IHC, WB
E2F8	13425-1-AP	Rabbit Poly	ELISA, IP, WB
EAF2	11172-1-AP	Rabbit Poly	ELISA, IF, IHC, WB
E-cadherin	 20648-1-AP	Rabbit Poly	ELISA, FC, IF, IHC, WB
E-cadherin	 20874-1-AP	Rabbit Poly	ELISA, FC, IF, IHC, IP, WB
EDAR	18032-1-AP	Rabbit Poly	ELISA, FC, IF, IHC, IP, WB
EFHD2	12181-1-AP	Rabbit Poly	ELISA, IHC, WB
EI24	20456-1-AP	Rabbit Poly	ELISA, WB
EID1	 11734-1-AP	Rabbit Poly	ELISA, IF, IHC, WB
EIF2AK1	 20499-1-AP	Rabbit Poly	ELISA, IF, WB
EIF2AK2	18244-1-AP	Rabbit Poly	ELISA, IF, IHC, IP, WB
EIF2AK3	24390-1-AP	Rabbit Poly	ELISA, IF, IHC, WB
EIF3G	11165-1-AP	Rabbit Poly	ELISA, IF, IHC, WB
EIF3M	 11423-1-AP	Rabbit Poly	ELISA, IF, IHC, IP, WB
EIF3M	66025-1-Ig	Mouse Mono	ELISA, IF, WB
EIF5A	11309-1-AP	Rabbit Poly	ELISA, IF, WB
EIF5A2	 17069-1-AP	Rabbit Poly	ELISA, IF, IHC, IP, WB
ELF4	16020-1-AP	Rabbit Poly	ELISA, IP, WB
EMAP II	 11091-1-AP	Rabbit Poly	ELISA, IF, IHC, WB
EPB41L3	10719-1-AP	Rabbit Poly	ELISA
EPHA1-specific	18698-1-AP	Rabbit Poly	ELISA, FC, IF, IHC, IP, WB
EPHA1-specific	60155-2-Ig	Mouse Mono	ELISA, IHC, WB
EPHA7	13119-1-AP	Rabbit Poly	ELISA
ERAL1	 11478-1-AP	Rabbit Poly	ELISA, IHC, IP, WB
ERBB4	19943-1-AP	Rabbit Poly	ELISA, IHC, WB
ERK1/2	 11257-1-AP	Rabbit Poly	ELISA, IF, IHC, WB
ERK1/2	 16443-1-AP	Rabbit Poly	ELISA, IF, IHC, WB
ERK1/2	 66192-1-Ig	Mouse Mono	ELISA, IF, IHC, IP, WB
ERO1L	12007-1-AP	Rabbit Poly	ELISA, FC, IHC, IP, WB
ERO1L	18313-1-AP	Rabbit Poly	ELISA, IHC

 This number shows the amount of times our antibody has been cited in a publication.



More validation images available on our website.



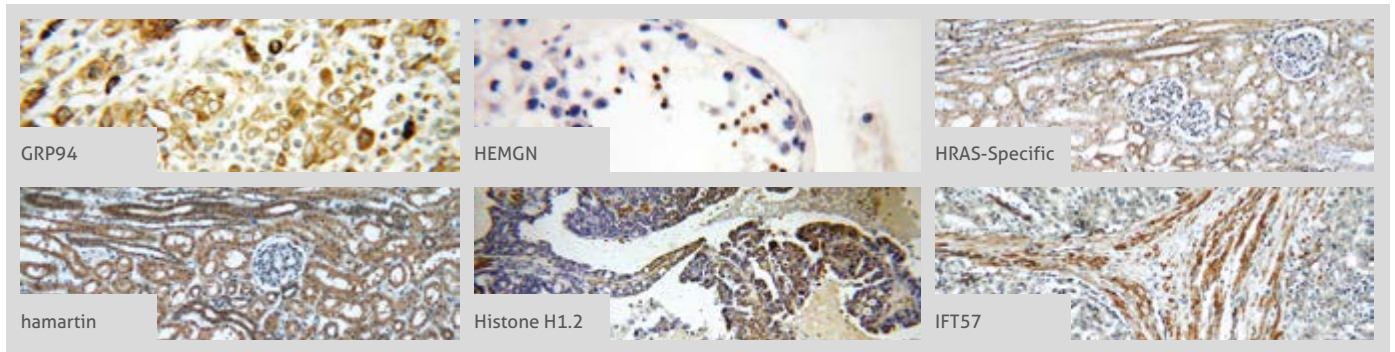
Antibody Name	Cat. No.	Type	Applications
ETV5	2 13011-1-AP	Rabbit Poly	ELISA, IF, WB
EYA1	22658-1-AP	Rabbit Poly	ELISA, IF, IHC, IP, WB
EYA3	21196-1-AP	Rabbit Poly	ELISA, IF, IHC, IP, WB
EZH2	4 21800-1-AP	Rabbit Poly	ELISA, IF, IP, WB
FADD	14906-1-AP	Rabbit Poly	ELISA, IF, IHC, IP, WB
FAF2	4 16251-1-AP	Rabbit Poly	ELISA, IF, IHC, IP, WB
FAIM	13005-1-AP	Rabbit Poly	ELISA, IHC, WB
FAK	8 12636-1-AP	Rabbit Poly	ELISA, IF, IHC, IP, WB
FAM120A	21529-1-AP	Rabbit Poly	ELISA, IF, IHC, WB
FAM3B	14043-1-AP	Rabbit Poly	ELISA, IHC, WB
FAM48A	24419-1-AP	Rabbit Poly	ELISA, IHC, WB
FAS/CD95	15 13098-1-AP	Rabbit Poly	ELISA, FC, IF, IHC, IP, WB
FAS/CD95	60196-1-Ig	Mouse Mono	ELISA, FC, IHC, WB
FBXO6	11830-1-AP	Rabbit Poly	ELISA, IHC, WB
FBXO7	10696-1-AP	Rabbit Poly	CoIP, ELISA, IHC, IP, WB
FE65	12526-1-AP	Rabbit Poly	ELISA, IF, IHC, WB
FEM1B	11030-1-AP	Rabbit Poly	ELISA, IHC
FEM1B	19544-1-AP	Rabbit Poly	ELISA, IF, WB
FERMT3	18131-1-AP	Rabbit Poly	ELISA, IF, IHC, WB
FGF1	17400-1-AP	Rabbit Poly	ELISA, IHC
FGF5	18171-1-AP	Rabbit Poly	ELISA, IF, IHC, IP, WB
FGFR2	13042-1-AP	Rabbit Poly	ELISA, IF, IHC, WB
FGFR2	60106-1-Ig	Mouse Mono	ELISA, WB
FHIT	66086-1-Ig	Mouse Mono	ELISA, IF, IHC, WB
FIP200	16172-1-AP	Rabbit Poly	ELISA, IHC, WB
FIS1	22 10956-1-AP	Rabbit Poly	ELISA, IF, IHC, IP, WB
FKBP8	11173-1-AP	Rabbit Poly	ELISA, IF, IP, WB
FLT3	21049-1-AP	Rabbit Poly	ELISA, IP, WB
FNTA	12274-1-AP	Rabbit Poly	ELISA, WB
FOXA1	20411-1-AP	Rabbit Poly	ELISA, IHC, WB
FOXO1	4 18592-1-AP	Rabbit Poly	ELISA, FC, IHC, WB



Antibody Name	Cat. No.	Type	Applications
FOXO3A	5 10849-1-AP	Rabbit Poly	ELISA, IF, IHC, WB
G0S2	2 12091-1-AP	Rabbit Poly	ELISA, IF, WB
GABARAPL1	20 11010-1-AP	Rabbit Poly	ELISA, FC, IF, IHC, IP, WB
GABARAPL1	18721-1-AP	Rabbit Poly	ELISA, FC, IHC, WB
GABARAPL2	10704-1-AP	Rabbit Poly	ELISA, WB
GABARAPL2-Specific	2 18724-1-AP	Rabbit Poly	ELISA, FC, IHC, WB
GADD34	25 10449-1-AP	Rabbit Poly	ELISA, IF, IHC, WB
Galectin 1	11858-1-AP	Rabbit Poly	ELISA, IHC, WB
Galectin 1	60223-1-Ig	Mouse Mono	ELISA, IHC, WB
Galectin-7	16730-1-AP	Rabbit Poly	ELISA, IHC, WB
GAS2	11941-2-AP	Rabbit Poly	ELISA, IHC, WB
GAS41	11050-1-AP	Rabbit Poly	ELISA, WB
GATA4-Specific	3 19530-1-AP	Rabbit Poly	ELISA, IHC, IP, WB
Gelsolin	2 11644-2-AP	Rabbit Poly	ELISA, IHC, WB
GGCT	16257-1-AP	Rabbit Poly	ELISA, IHC, WB
GHITM	16296-1-AP	Rabbit Poly	ELISA, IF, IHC, WB
GILZ	12352-1-AP	Rabbit Poly	ELISA, WB
GIMAP4	11852-1-AP	Rabbit Poly	ELISA, IP, WB
GLRX2	13381-1-AP	Rabbit Poly	ELISA, IF, WB
Glucagon	15954-1-AP	Rabbit Poly	ELISA, IHC
Glucocorticoid receptor	5 24050-1-AP	Rabbit Poly	ChIP, ELISA, IF, IP, WB
GOLGA3	21193-1-AP	Rabbit Poly	ELISA, IF, WB
GOPC	12163-1-AP	Rabbit Poly	ELISA, IF, IHC, WB
GPR37/Pael-R	2 14820-1-AP	Rabbit Poly	ELISA, IF, WB
GPRASP1-Specific	20020-1-AP	Rabbit Poly	ELISA, IHC, WB
GRAMD4	24299-1-AP	Rabbit Poly	ELISA, WB
Granzyme A	11288-1-AP	Rabbit Poly	ELISA, IHC, WB
GRIK2	13597-1-AP	Rabbit Poly	ELISA, FC, WB
GRIM19	10986-1-AP	Rabbit Poly	ELISA, IF, IHC, IP, WB
GRK5	17032-1-AP	Rabbit Poly	ELISA, IHC, WB

00 This number shows the amount of times our antibody has been cited in a publication.

GRP78/BIP  
→ IFT88

More validation images available on our website. 

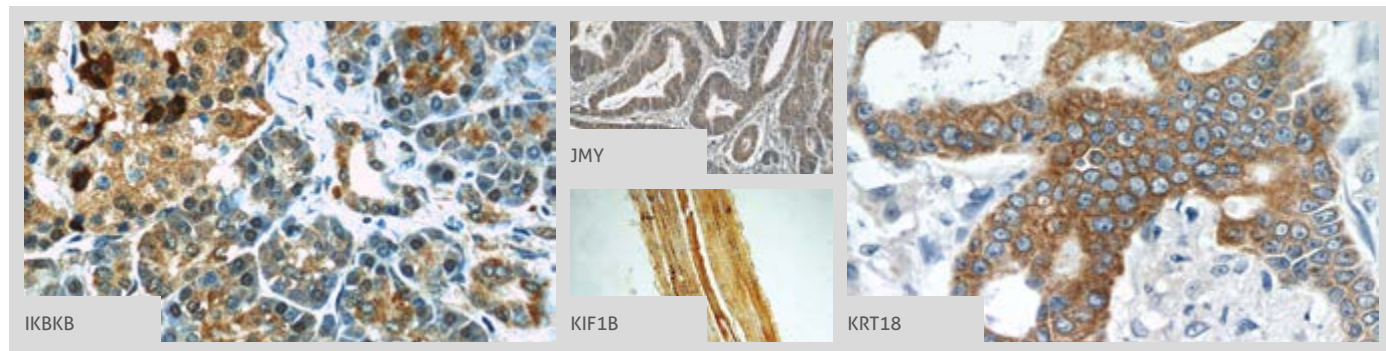


Antibody Name	Cat. No.	Type	Applications
GRP78/BIP	<b>38</b> 11587-1-AP	Rabbit Poly	ELISA, FC, IF, IHC, IP, WB
GRP94	 10979-1-AP	Rabbit Poly	ELISA, FC, IF, IHC, IP, WB
GRP94	<b>7</b> 14700-1-AP	Rabbit Poly	ELISA, FC, IF, IHC, IP, WB
GRP94	60012-1-Ig	Mouse Mono	ELISA, FC, IF, IHC, WB
GSK3A	13419-1-AP	Rabbit Poly	ELISA, IHC, WB
GSK3B	15113-1-AP	Rabbit Poly	ELISA, IHC, IP, WB
GSK3B	<b>25</b> 22104-1-AP	Rabbit Poly	ELISA, IF, IHC, IP, WB
GSK3B	24198-1-AP	Rabbit Poly	ELISA, FC, IF, IHC, IP, WB
GSK3B	51065-1-AP	Rabbit Poly	ELISA, IF, IHC, IP, WB
GSTO1	<b>2</b> 15124-1-AP	Rabbit Poly	ELISA, IF, IHC, IP, WB
GSTO1	60150-2-Ig	Mouse Mono	ELISA, IF, IHC, WB
GULP1	19902-1-AP	Rabbit Poly	ELISA, IHC, WB
GZMB	<b>2</b> 13588-1-AP	Rabbit Poly	ELISA, IF, IHC, WB
GZMM	13208-1-AP	Rabbit Poly	ELISA, WB
H2AFY2	17030-1-AP	Rabbit Poly	ELISA, IP, WB
hamartin	 20988-1-AP	Rabbit Poly	ELISA, IF, IHC, IP, WB
HAX1	11266-1-AP	Rabbit Poly	ELISA, IHC, IP, WB
HBB	16216-1-AP	Rabbit Poly	ELISA, IHC, IP, WB
HBXIP	<b>2</b> 14492-1-AP	Rabbit Poly	ELISA, FC, IHC, IP, WB
HCK	11600-1-AP	Rabbit Poly	ELISA, IHC, WB
HDAC1	<b>10</b> 10197-1-AP	Rabbit Poly	ELISA, FC, IF, IHC, IP, WB
HDAC1	66085-1-Ig	Mouse Mono	ELISA, IF, IHC, WB
HDAC1-specific	16160-1-AP	Rabbit Poly	ELISA, IF, IP, WB
HDAC6	<b>4</b> 12834-1-AP	Rabbit Poly	ELISA, IF, IHC, IP, WB
HDAC6-specific	16167-1-AP	Rabbit Poly	ELISA, IHC, WB
HEMGN	 17616-1-AP	Rabbit Poly	ELISA, IHC, WB
HERPUD1	<b>4</b> 10813-1-AP	Rabbit Poly	ELISA, IF, IHC, WB
HIC5	10565-1-AP	Rabbit Poly	ELISA, IF, IHC, IP, WB
HINT1	<b>10</b> 10717-1-AP	Rabbit Poly	ELISA, IHC, IP, WB
HIP1	22231-1-AP	Rabbit Poly	ELISA, IF, IHC, IP, WB

Antibody Name	Cat. No.	Type	Applications
HIP1-Specific	19688-1-AP	Rabbit Poly	ELISA, IHC, IP, WB
Histone H1	18201-1-AP	Rabbit Poly	ELISA, IP, WB
Histone H1.2	15446-1-AP	Rabbit Poly	ELISA, IF, WB
Histone H1.2	 <b>3</b> 19649-1-AP	Rabbit Poly	ELISA, IF, IHC, IP, WB
Histone H2A.X	<b>8</b> 10856-1-AP	Rabbit Poly	ELISA, FC, IF, IHC, WB
Histone H2B	<b>2</b> 15857-1-AP	Rabbit Poly	ELISA, IHC, IP, WB
HIVEP1	25168-1-AP	Rabbit Poly	ELISA, IHC
HLA-DQA2	55072-1-AP	Rabbit Poly	ELISA, WB
HLA-DRA	17221-1-AP	Rabbit Poly	ELISA, IHC, WB
HLA-DRB1	15862-1-AP	Rabbit Poly	ELISA, IP, WB
HLA-DRB4	15733-1-AP	Rabbit Poly	ELISA, WB
HLA-DRB5	21702-1-AP	Rabbit Poly	ELISA, IHC, WB
HMGA2	20795-1-AP	Rabbit Poly	ELISA, IF, IP, WB
HMGB1	<b>24</b> 10829-1-AP	Rabbit Poly	ChIP, ELISA, FC, IF, IHC, IP, WB
HMGB2	14597-1-AP	Rabbit Poly	ELISA, IHC, IP, WB
HMGB2	15605-1-AP	Rabbit Poly	ELISA, IHC, WB
HMOX1	<b>34</b> 10701-1-AP	Rabbit Poly	ELISA, IF, IHC, IP, WB
HNRNPK	<b>4</b> 11426-1-AP	Rabbit Poly	ELISA, FC, IF, IHC, IP, WB
HRAS-Specific	 <b>5</b> 18295-1-AP	Rabbit Poly	ELISA, FC, IF, IHC, WB
HSP47	10875-1-AP	Rabbit Poly	ELISA, FC, IF, IHC, WB
HSP60	<b>13</b> 15282-1-AP	Rabbit Poly	ELISA, IF, IHC, IP, WB
HSP60	<b>2</b> 66041-1-Ig	Mouse Mono	ELISA, FC, IF, IHC, IP, WB
HTRA2	<b>2</b> 15775-1-AP	Rabbit Poly	ELISA, IF, IHC, IP, WB
IFIH1	<b>3</b> 21775-1-AP	Rabbit Poly	ELISA, IHC, IP, WB
IFIT1	23247-1-AP	Rabbit Poly	ELISA, IHC, WB
IFITM2	<b>18</b> 12769-1-AP	Rabbit Poly	ELISA, FC, IF, IHC, IP, WB
IFITM2-specific	66137-1-Ig	Mouse Mono	ELISA, FC, WB
IFT20	<b>15</b> 13615-1-AP	Rabbit Poly	ELISA, IF, IHC, IP, WB
IFT57	 <b>10</b> 11083-1-AP	Rabbit Poly	ELISA, IF, IHC, IP, WB
IFT88	<b>95</b> 13967-1-AP	Rabbit Poly	ELISA, IF, IHC, IP, WB

**00** This number shows the amount of times our antibody has been cited in a publication.

More validation images available on our website.



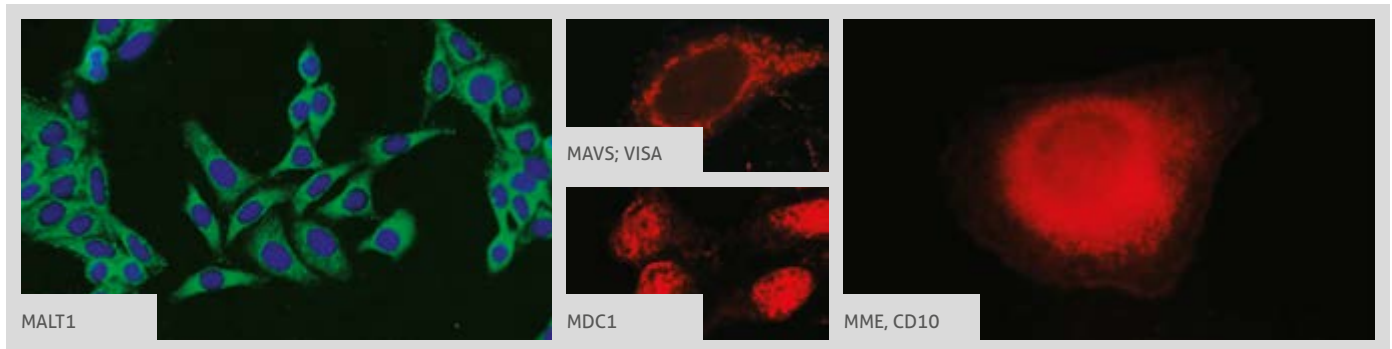
Antibody Name	Cat. No.	Type	Applications
IFT88	60227-1-Ig	Mouse Mono	ELISA, IHC, IP, WB
IGF1R-Specific	2 20254-1-AP	Rabbit Poly	ELISA, IHC, IP, WB
IGFBP3	2 10189-2-AP	Rabbit Poly	ELISA, IF, IHC, WB
IκB alpha	21 10268-1-AP	Rabbit Poly	ELISA, FC, IF, IHC, IP, WB
IκB alpha	2 18220-1-AP	Rabbit Poly	ELISA, IF, IHC, IP, WB
IκB alpha	2 51066-1-AP	Rabbit Poly	ELISA, IHC, IP, WB
IKBKB	3 15649-1-AP	Rabbit Poly	ELISA, IF, WB
IKBKB	20979-1-AP	Rabbit Poly	ELISA, IF, IHC, WB
IKBKG	4 18474-1-AP	Rabbit Poly	ELISA, IF, IHC, WB
IKZF1	12016-1-AP	Rabbit Poly	ELISA, IHC, IP, WB
IKZF3	13561-1-AP	Rabbit Poly	ELISA, WB
IKZF3	19055-1-AP	Rabbit Poly	ELISA, IF, IHC, WB
IL-24	12064-1-AP	Rabbit Poly	ELISA, WB
IL-24	18694-1-AP	Rabbit Poly	ELISA, WB
IL-24	60139-1-Ig	Mouse Mono	ELISA, WB
IL-8	17038-1-AP	Rabbit Poly	ELISA, IHC
ING1-specific	16185-1-AP	Rabbit Poly	ELISA, IP, WB
ING2	7 11560-1-AP	Rabbit Poly	ELISA, IF, IHC, IP, WB
ING3	5 10905-1-AP	Rabbit Poly	ELISA, IHC, WB
ING3-specific	16187-1-AP	Rabbit Poly	ELISA, IP, WB
INPP5D	19694-1-AP	Rabbit Poly	ELISA, IHC, WB
iPLA2	22030-1-AP	Rabbit Poly	ELISA, IHC, IP, WB
IPPK	12603-1-AP	Rabbit Poly	ELISA, IHC, WB
IRF1	11335-1-AP	Rabbit Poly	ELISA, IF, IHC, WB
IRF3	14 11312-1-AP	Rabbit Poly	ELISA, FC, IF, IHC, IP, WB
IRF7	22392-1-AP	Rabbit Poly	ELISA, IHC, IP, WB
ITPK1	10568-1-AP	Rabbit Poly	ELISA, WB
ITPR1-specific	19962-1-AP	Rabbit Poly	ELISA, FC, IHC, WB
JMY	25098-1-AP	Rabbit Poly	ELISA, IF, IHC, IP, WB
JNK2	51153-1-AP	Rabbit Poly	ELISA, IF, IP, WB








Antibody Name	Cat. No.	Type	Applications
JTV1	9 10424-1-AP	Rabbit Poly	ELISA, IF, IHC, IP, WB
KANK2	20546-1-AP	Rabbit Poly	ELISA, IF, IHC
KANK2	21733-1-AP	Rabbit Poly	ELISA, IF, WB
KAP1	2 15202-1-AP	Rabbit Poly	ELISA, FC, IF, IHC, IP, WB
KAT5	3 10827-1-AP	Rabbit Poly	ELISA, IHC, WB
KCNIP3	12032-1-AP	Rabbit Poly	ELISA, IHC, WB
KEAP1	62 10503-2-AP	Rabbit Poly	ELISA, IF, IHC, IP, WB
KEAP1	12 60027-1-Ig	Mouse Mono	ELISA, IF, IHC, WB
KIAA0513	21478-1-AP	Rabbit Poly	ELISA, IF, WB
KIF1B	15263-1-AP	Rabbit Poly	ELISA, IHC, IP, WB
KIF20A	15911-1-AP	Rabbit Poly	ELISA, IP, WB
KISS1	18375-1-AP	Rabbit Poly	ELISA, IF, IHC, WB
KISS1R-Specific	15505-1-AP	Rabbit Poly	ELISA, FC, IF, WB
KLHL20	18111-1-AP	Rabbit Poly	ELISA, IHC, WB
KPNA1	3 18137-1-AP	Rabbit Poly	ELISA, IF, IHC, IP, WB
KPNB1	10077-1-AP	Rabbit Poly	ELISA, IHC, WB
KRT18	66187-1-Ig	Mouse Mono	ELISA, FC, IF, IHC, WB
Kynurenine 3 monooxygenase	5 10698-1-AP	Rabbit Poly	ELISA, IF, IHC, WB
Kynurenine 3 monooxygenase	2 60029-1-Ig	Mouse Mono	ELISA, IF, IHC, WB
Lactoferrin	10933-1-AP	Rabbit Poly	ELISA, IHC, IP, WB
Lamin A/C	10 10298-1-AP	Rabbit Poly	ELISA, FC, IF, IP, WB
Lamin B1	59 12987-1-AP	Rabbit Poly	ChIP, ELISA, FC, IF, IHC, IP, WB
Lamin B1	14 66095-1-Ig	Mouse Mono	ELISA, FC, IF, IP, WB
LAMP1	55273-1-AP	Rabbit Poly	ELISA, IF, WB
LATS1	17049-1-AP	Rabbit Poly	ELISA, IHC, WB
LATS1	17049-1-AP	Rabbit Poly	ELISA, IHC, WB
LATS2-Specific	20276-1-AP	Rabbit Poly	ELISA, FC, IF, IHC, WB
LC3	20 12135-1-AP	Rabbit Poly	ELISA, IF, IHC, WB
LC3A/B	10 66139-1-Ig	Mouse Mono	ELISA, FC, IF, IHC, WB
LC3A-Specific	2 18722-1-AP	Rabbit Poly	ELISA, FC, IF, WB

00 This number shows the amount of times our antibody has been cited in a publication.


LEO1  
→ MRPL12

More validation images available on our website. 



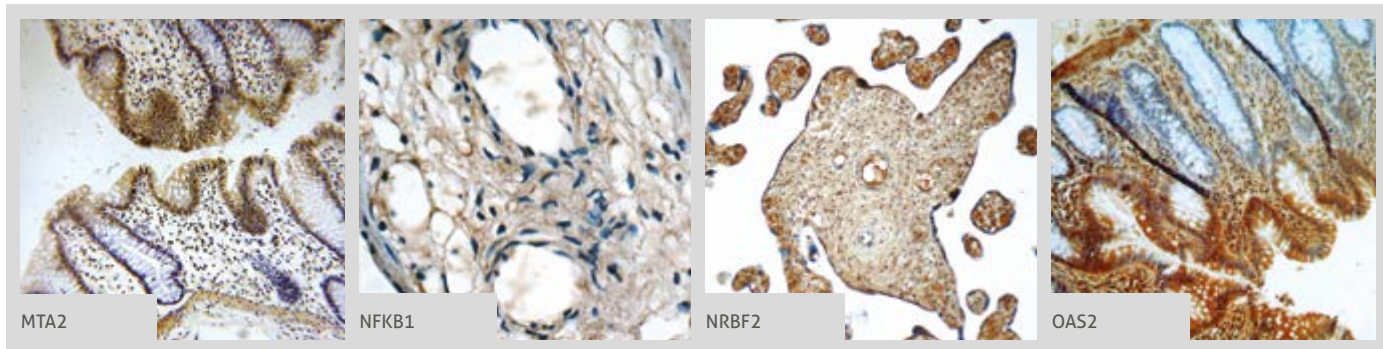
Antibody Name	Cat. No.	Type	Applications
LEO1	12281-1-AP	Rabbit Poly	ELISA, IF, IHC, WB
LGI1	12483-1-AP	Rabbit Poly	ELISA, WB
LIN9	17882-1-AP	Rabbit Poly	ELISA, IP, WB
LITAF	16797-1-AP	Rabbit Poly	ELISA, IF, IHC, IP, WB
LKB1	 10746-1-AP	Rabbit Poly	ELISA, IHC, IP, WB
LMP2	 14544-1-AP	Rabbit Poly	ELISA, IF, IHC, IP, WB
LMP7	14859-1-AP	Rabbit Poly	ELISA, FC, IF, IHC, IP, WB
LRDD	12119-1-AP	Rabbit Poly	ELISA, IF, IHC, IP, WB
LTBR	20331-1-AP	Rabbit Poly	ELISA, FC, IHC, WB
LYAR	24433-1-AP	Rabbit Poly	ELISA, WB
LYN	18135-1-AP	Rabbit Poly	ELISA, FC, IF, IHC, IP, WB
LYN	60211-1-Ig	Mouse Mono	ELISA, IHC, WB
MAEA	15238-1-AP	Rabbit Poly	ELISA, IHC, WB
MAF	55013-1-AP	Rabbit Poly	ELISA, IF, IHC, IP, WB
MAGEA3	60054-1-Ig	Mouse Mono	ELISA, IHC, WB
MAGEA6	14602-1-AP	Rabbit Poly	ELISA, IF, IHC, WB
MAGEC2	 10280-1-AP	Rabbit Poly	ELISA, IHC
MAGEC2	60040-1-Ig	Mouse Mono	ELISA, IHC
MAGED1	11539-1-AP	Rabbit Poly	ELISA, FC, IHC, WB
MAGED1	22053-1-AP	Rabbit Poly	ELISA, FC, IF, IHC, IP, WB
MALT1	 11660-1-AP	Rabbit Poly	ELISA, FC, IF, IHC, WB
MAP1B	 21633-1-AP	Rabbit Poly	ELISA, FC, IF, IHC, WB
MAP1S	15695-1-AP	Rabbit Poly	ELISA, IF, IHC, IP, WB
MAPK10	17572-1-AP	Rabbit Poly	ELISA, IF, WB
MAPK11	17376-1-AP	Rabbit Poly	ELISA, IHC, WB
MAPK13	60252-1-Ig	Mouse Mono	ELISA, WB
MAPKAPK5	14339-1-AP	Rabbit Poly	ELISA, IF, IP, WB
MARCH5	12213-1-AP	Rabbit Poly	ELISA, IHC, IP, WB
MAVS; VISA	  14341-1-AP	Rabbit Poly	ELISA, IF, IHC, IP, WB
MBD4	11270-1-AP	Rabbit Poly	ELISA, WB

Antibody Name	Cat. No.	Type	Applications
MCL1	 16225-1-AP	Rabbit Poly	ELISA, IHC, IP, WB
MCL1	 66026-1-Ig	Mouse Mono	ELISA, IF, IHC, WB
MCL1L-specific	15825-1-AP	Rabbit Poly	ELISA, IHC
MDC1	 24721-1-AP	Rabbit Poly	ELISA, IF, IHC
MEF2A	12382-1-AP	Rabbit Poly	ELISA, WB
MEF2C	 10056-1-AP	Rabbit Poly	ELISA, IF, IHC, IP, WB
MEF2C	16953-1-AP	Rabbit Poly	ELISA, WB
MEF2C	18290-1-AP	Rabbit Poly	ELISA, IHC, WB
MEF2C	18291-1-AP	Rabbit Poly	ELISA, IHC, WB
MEF2C	20326-1-AP	Rabbit Poly	ELISA, IHC, WB
MEF2C	60124-2-Ig	Mouse Mono	ELISA, IHC, WB
MEF2C-Specific	18293-1-AP	Rabbit Poly	ELISA, IHC
MEK4	 17340-1-AP	Rabbit Poly	ELISA, IHC, WB
MEK4	51142-1-AP	Rabbit Poly	ELISA, IHC, WB
MEK5	15758-1-AP	Rabbit Poly	ELISA, IF, IHC, WB
MEK6	12745-1-AP	Rabbit Poly	ELISA, FC, IHC, WB
MFN1	 13798-1-AP	Rabbit Poly	ELISA, IHC, WB
MFN2	 12186-1-AP	Rabbit Poly	ELISA, IF, IHC, IP, WB
MICAL1	 14818-1-AP	Rabbit Poly	ELISA, FC, IHC, IP, WB
MIF	20415-1-AP	Rabbit Poly	ELISA, IHC, IP, WB
MLH1	 11697-1-AP	Rabbit Poly	ELISA, IF, IHC, IP, WB
MME, CD10	10302-1-AP	Rabbit Poly	ELISA, FC, IHC, WB
MME, CD10	 18008-1-AP	Rabbit Poly	ELISA, FC, IHC, IP, WB
MME, CD10	 23898-1-AP	Rabbit Poly	ELISA, FC, IF, WB
MME, CD10	60034-3-Ig	Mouse Mono	ELISA, IHC, WB
MOBKL1A	 12790-1-AP	Rabbit Poly	ELISA, IHC, IP, WB
MOBKL1B	11669-1-AP	Rabbit Poly	ELISA, WB
MORF4L1	55257-1-AP	Rabbit Poly	ELISA, IF, IHC, IP, WB
MORF4L2	14710-1-AP	Rabbit Poly	ELISA, IF, WB
MOXD1	11545-1-AP	Rabbit Poly	ELISA, WB
MRPL12	 14795-1-AP	Rabbit Poly	ELISA, FC, IF, IHC, IP, WB

 This number shows the amount of times our antibody has been cited in a publication.



More validation images available on our website.



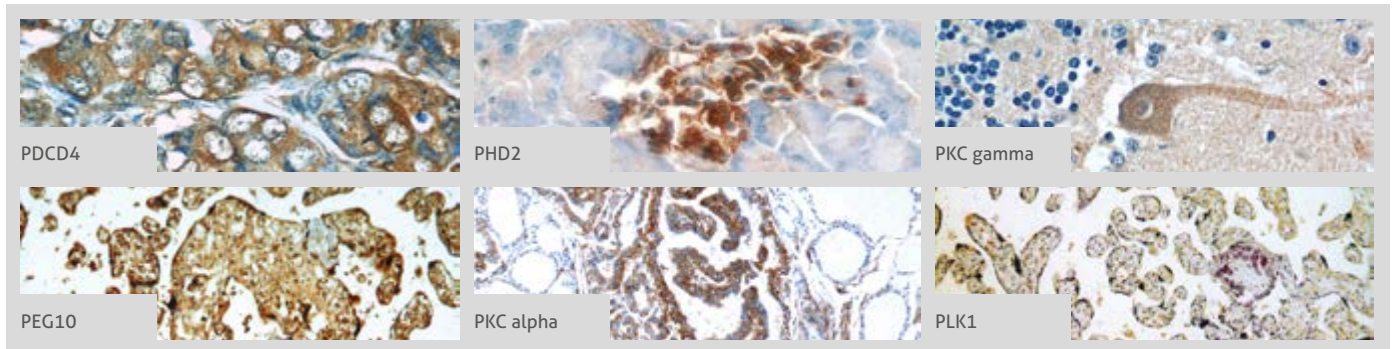
Antibody Name	Cat. No.	Type	Applications
MRPS27	10 17280-1-AP	Rabbit Poly	ELISA, IF, IHC, IP, WB
MSH2	5 15520-1-AP	Rabbit Poly	ELISA, FC, IF, IHC, IP, WB
MSH2	60161-1-Ig	Mouse Mono	ELISA, IHC, WB
MST4	10847-1-AP	Rabbit Poly	ELISA, IF, IHC, WB
MT3	12179-1-AP	Rabbit Poly	ELISA, IHC
MTA2	17554-1-AP	Rabbit Poly	ELISA, IHC, IP, WB
MTA2	66195-1-Ig	Mouse Mono	ELISA, FC, IF, IHC, WB
MTOR	13 20657-1-AP	Rabbit Poly	ELISA, IF, IHC, IP, WB
MTP18	14257-1-AP	Rabbit Poly	ELISA, IHC, IP, WB
MUC4	55343-1-AP	Rabbit Poly	ELISA, WB
MUL1	16133-1-AP	Rabbit Poly	ELISA, IF, IHC, WB
MX1	25 13750-1-AP	Rabbit Poly	ELISA, FC, IF, IHC, IP, WB
MYCT1	22004-1-AP	Rabbit Poly	ELISA, WB
Myelin basic protein	2 10458-1-AP	Rabbit Poly	ELISA, IHC, WB
MYLK	21642-1-AP	Rabbit Poly	ELISA, IF, WB
MYO18A	3 14611-1-AP	Rabbit Poly	ELISA, FC, IP, WB
MZB1	3 11454-1-AP	Rabbit Poly	ELISA, IHC, WB
NALP3	9 19771-1-AP	Rabbit Poly	ELISA, IF, IHC, WB
NANOS3	21679-1-AP	Rabbit Poly	ELISA, IHC, WB
NCKAP1	2 12140-1-AP	Rabbit Poly	ELISA, IHC, WB
NF2	10659-1-AP	Rabbit Poly	ELISA, WB
NF2	21686-1-AP	Rabbit Poly	ELISA, IF, IHC, IP, WB
NFKB1	15 14220-1-AP	Rabbit Poly	ELISA, IF, IP, WB
NFKB1	23576-1-AP	Rabbit Poly	ELISA, IF, IHC, WB
NFKB1, p105, p50-Specific	15506-1-AP	Rabbit Poly	ELISA, WB
NFKB2	2 10409-2-AP	Rabbit Poly	ELISA, IF, IHC, IP, WB
NFKB2	51085-1-AP	Rabbit Poly	ELISA, WB
NFKB2, p52, p100-Specific	15503-1-AP	Rabbit Poly	ELISA, IHC, WB
NGB	13499-1-AP	Rabbit Poly	ELISA, IHC, WB
NGFRAP1	10446-1-AP	Rabbit Poly	ELISA, WB

Antibody Name	Cat. No.	Type	Applications
NISCH	13813-1-AP	Rabbit Poly	ELISA, IP, WB
NIT1	14380-1-AP	Rabbit Poly	ELISA, IHC, WB
NLRP1	12256-1-AP	Rabbit Poly	ELISA, IHC, WB
NLRP1	24792-1-AP	Rabbit Poly	ELISA, IHC
NLRP2	15182-1-AP	Rabbit Poly	ELISA, IHC, WB
NLRX1	4 17215-1-AP	Rabbit Poly	ELISA, IF, IHC, IP, WB
NME1	11086-2-AP	Rabbit Poly	ELISA, IF, IHC, IP, WB
NME3	15136-1-AP	Rabbit Poly	ELISA, IF, WB
NME5	12923-1-AP	Rabbit Poly	ELISA, IHC, WB
NME6	10250-1-AP	Rabbit Poly	ELISA, WB
NMRAL1	15765-1-AP	Rabbit Poly	ELISA, IHC, IP, WB
NMT1	2 11546-1-AP	Rabbit Poly	ELISA, IF, IHC, IP, WB
NOX4	12 14347-1-AP	Rabbit Poly	ELISA, FC, IF, IHC, IP, WB
NOX5	25350-1-AP	Rabbit Poly	ELISA, IF, IHC, WB
NPC1	3 13926-1-AP	Rabbit Poly	ELISA, IF, IHC, WB
NR1D1	14506-1-AP	Rabbit Poly	ELISA, IF, IP, WB
NRAS	2 10724-1-AP	Rabbit Poly	ELISA, FC, IF, IHC, WB
NRBF2	24858-1-AP	Rabbit Poly	ELISA, IF, IHC, IP, WB
NRBP2	21549-1-AP	Rabbit Poly	ELISA, IHC, IP, WB
NSMCE2	13627-1-AP	Rabbit Poly	ELISA, IF, WB
NUAK2	4 11592-1-AP	Rabbit Poly	ELISA, IF, IHC, WB
OAS1	14955-1-AP	Rabbit Poly	ELISA, IF, IHC, WB
OAS2	14214-1-AP	Rabbit Poly	ELISA, WB
OAS2	19279-1-AP	Rabbit Poly	ELISA, IF, IHC, IP, WB
OAS3	21915-1-AP	Rabbit Poly	ELISA, IF, IHC, WB
Occludin	15 13409-1-AP	Rabbit Poly	ELISA, IF, IP, WB
OFD1	22851-1-AP	Rabbit Poly	ELISA, IHC, WB
OGT	6 11576-2-AP	Rabbit Poly	ELISA, IF, IHC, IP, WB
OLR1	11837-1-AP	Rabbit Poly	ELISA, FC, IHC, IP, WB
OPTN	10 10837-1-AP	Rabbit Poly	ELISA, FC, IF, IHC, IP, WB

00 This number shows the amount of times our antibody has been cited in a publication.



**OPTN**  
 → PLK1-phospho

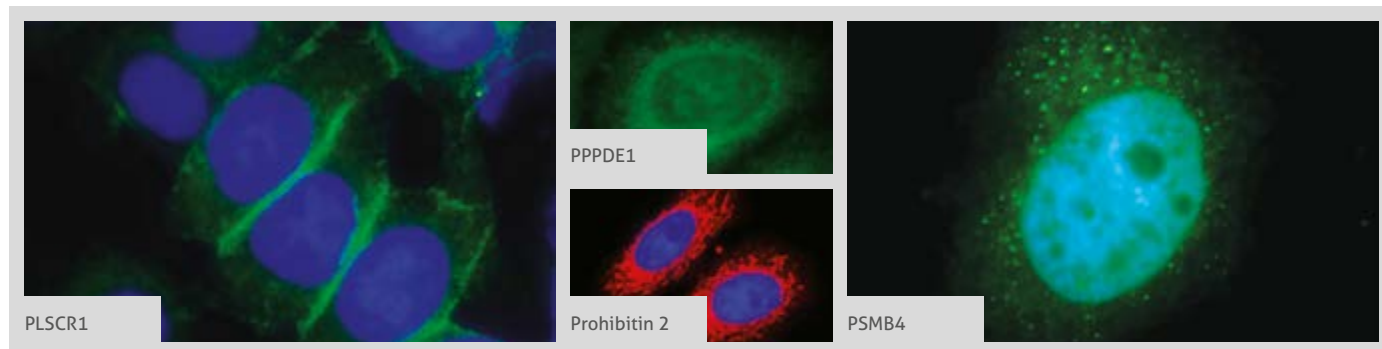
 More validation images available on our website. 


Antibody Name	Cat. No.	Type	Applications
OPTN	60293-1-Ig	Mouse Mono	ELISA, IHC, WB
OS9	<b>6</b> 10061-1-AP	Rabbit Poly	ELISA, IF, IHC, WB
OVCA2	14943-1-AP	Rabbit Poly	ELISA, IHC, WB
p150 glued	55182-1-AP	Rabbit Poly	ELISA, IF, IHC, WB
P16-INK4A	<b>26</b> 10883-1-AP	Rabbit Poly	ELISA, FC, IF, IHC, IP, WB
P21	10240-1-AP	Rabbit Poly	ELISA, IF
P21	<b>3</b> 60214-1-Ig	Mouse Mono	ELISA, WB
P21; CDKN1A	<b>46</b> 10355-1-AP	Rabbit Poly	ELISA, FC, IF, IHC, IP, WB
p35	18346-1-AP	Rabbit Poly	ELISA, IP, WB
P53	<b>69</b> 10442-1-AP	Rabbit Poly	ELISA, IF, IHC, IP, WB
P62/SQSTM1	<b>2</b> 66184-1-Ig	Mouse Mono	ELISA, IF, IHC, WB
PDCD4	<b>8</b> 12587-1-AP	Rabbit Poly	ELISA, FC, IHC, IP, WB
PDCD4	 66100-1-Ig	Mouse Mono	ELISA, IHC, WB
PDCD5	<b>6</b> 12456-1-AP	Rabbit Poly	ELISA, IF, IHC, WB
PDCD6IP	<b>5</b> 12422-1-AP	Rabbit Poly	ELISA, IF, IP, WB
PDCL3	14997-1-AP	Rabbit Poly	ELISA, IF, WB
PDGFRA	60045-1-Ig	Mouse Mono	ELISA, IHC, WB
PDI	<b>7</b> 11245-1-AP	Rabbit Poly	ELISA, FC, IF, IHC, IP, WB
PDK1	<b>5</b> 10026-1-AP	Rabbit Poly	ELISA, IHC, IP, WB
PDK1	18262-1-AP	Rabbit Poly	ELISA, IHC, WB
PDK2	<b>2</b> 15647-1-AP	Rabbit Poly	ELISA, IHC, IP, WB
PEF1	10151-1-AP	Rabbit Poly	ELISA, IF, IP, WB
PEG10	 14412-1-AP	Rabbit Poly	ELISA, IF, IHC, WB
Perforin	14580-1-AP	Rabbit Poly	ELISA, WB
PERK	<b>7</b> 20582-1-AP	Rabbit Poly	ELISA, IF, IHC, WB
PHACTR1	23446-1-AP	Rabbit Poly	ELISA, WB
PHD1	12984-1-AP	Rabbit Poly	ELISA, IF, WB
PHD2	19886-1-AP	Rabbit Poly	ELISA, WB
PHD2	 20368-1-AP	Rabbit Poly	ELISA, IF, IHC, WB
PHD3	<b>2</b> 18325-1-AP	Rabbit Poly	ELISA, IHC, IP, WB

Antibody Name	Cat. No.	Type	Applications
PHF17	<b>3</b> 15032-1-AP	Rabbit Poly	ELISA, IP, WB
PHLDA1	18263-1-AP	Rabbit Poly	ELISA, WB
PHLDA2	14661-1-AP	Rabbit Poly	ELISA, WB
PHLPP	<b>2</b> 22789-1-AP	Rabbit Poly	ELISA, IF, IHC, IP, WB
PIAS4	14242-1-AP	Rabbit Poly	ELISA, WB
PIAS4	18469-1-AP	Rabbit Poly	ELISA, IF, WB
PIG3	14828-1-AP	Rabbit Poly	ELISA, IF, IHC, IP, WB
PIK3CB	<b>5</b> 20584-1-AP	Rabbit Poly	ELISA, IF, IHC, WB
PIK3CB	21739-1-AP	Rabbit Poly	ELISA, IF, IHC, WB
PIK3IP1	<b>3</b> 16826-1-AP	Rabbit Poly	ELISA, IP, WB
PIK3R4	17894-1-AP	Rabbit Poly	ELISA, IF, WB
PIR	10263-1-AP	Rabbit Poly	ELISA, IP, WB
PKC alpha	 21991-1-AP	Rabbit Poly	ELISA, IF, IHC, IP, WB
PKC beta	<b>2</b> 12919-1-AP	Rabbit Poly	ELISA, IHC, IP, WB
PKC delta	14188-1-AP	Rabbit Poly	ELISA, IP, WB
PKC epsilon	<b>2</b> 20877-1-AP	Rabbit Poly	ELISA, FC, IHC, IP, WB
PKC gamma	 14364-1-AP	Rabbit Poly	ELISA, FC, IF, IHC, IP, WB
PKC iota	13883-1-AP	Rabbit Poly	ELISA, IF, IHC, IP, WB
PKM	10078-2-AP	Rabbit Poly	ELISA, IF, IHC, WB
PK-M1-specific	<b>19</b> 15821-1-AP	Rabbit Poly	ELISA, IF, IHC, IP, WB
PK-M2-specific	<b>13</b> 15822-1-AP	Rabbit Poly	ELISA, IF, IHC, IP, WB
PK-M2-specific	60268-1-Ig	Mouse Mono	ELISA, FC, IF, IHC, IP, WB
PKN2	14608-1-AP	Rabbit Poly	ELISA, FC, IF, IP, WB
Plasminogen	<b>3</b> 16776-1-AP	Rabbit Poly	ELISA, IF, IHC, IP, WB
Plasminogen	17462-1-AP	Rabbit Poly	ELISA, WB
Plasminogen	18300-1-AP	Rabbit Poly	ELISA, IF, IHC, WB
PLEKHF1	20389-1-AP	Rabbit Poly	ELISA, IF, IHC, WB
PLEKHO1	24883-1-AP	Rabbit Poly	ELISA, WB
PLK1	 10305-1-AP	Rabbit Poly	ELISA, IHC, WB
PLK1-phospho	19553-1-AP	Rabbit Poly	ELISA, IHC, WB

**00** This number shows the amount of times our antibody has been cited in a publication.

More validation images available on our website.



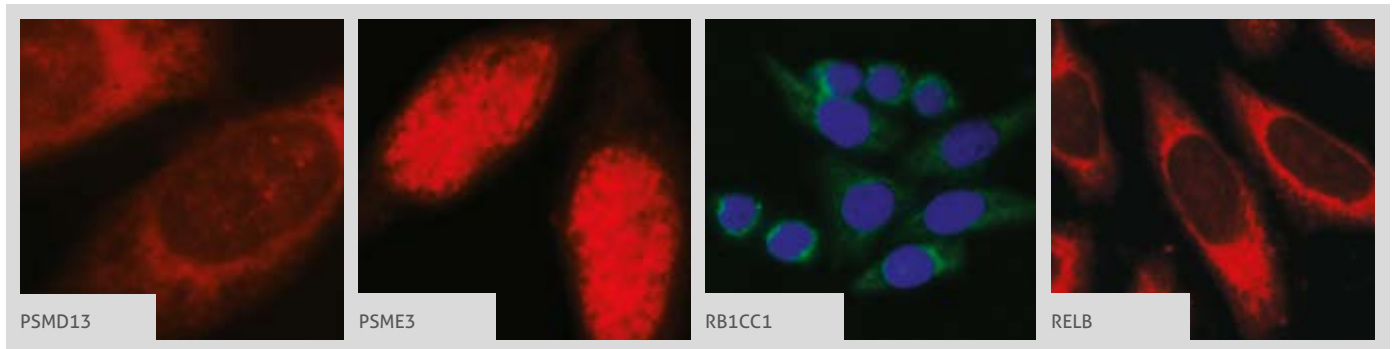
Antibody Name	Cat. No.	Type	Applications
PLK3	3 10977-1-AP	Rabbit Poly	ELISA, IF, IHC, WB
PLK4	3 12952-1-AP	Rabbit Poly	ELISA, IHC, WB
PLSCR1	5 11582-1-AP	Rabbit Poly	ELISA, FC, IF, IHC, In-Cell-Western, IP, WB
PLSCR3	51061-2-Ig	Rabbit Poly	ELISA, IHC, WB
PMS2	18164-1-AP	Rabbit Poly	ELISA, WB
PMS2	66075-1-Ig	Mouse Mono	ELISA, IHC, WB
PNPT1	2 14487-1-AP	Rabbit Poly	ELISA, IF, IHC, IP, WB
POMP	15046-1-AP	Rabbit Poly	ELISA, FC, IF, IHC, WB
PP2A	2 10321-1-AP	Rabbit Poly	ELISA, IHC, WB
PPID	12716-1-AP	Rabbit Poly	ELISA, FC, IHC, IP, WB
PPIF-Specific	18466-1-AP	Rabbit Poly	ELISA, IF, IHC, IP, WB
PPM1F	17020-1-AP	Rabbit Poly	ELISA, IF, WB
PPM1L	18203-1-AP	Rabbit Poly	ELISA, IHC, WB
PPP1CB	3 10140-2-AP	Rabbit Poly	ELISA, IF, IHC, IP, WB
PPP1CB	55136-1-AP	Rabbit Poly	ELISA, IF, WB
PPP1CC	2 11082-1-AP	Rabbit Poly	ELISA, IF, IHC, IP, WB
PPP1CC	55150-1-AP	Rabbit Poly	ELISA, IF, IHC, IP, WB
PPP1R13L	18590-1-AP	Rabbit Poly	ELISA, IF, IHC, IP, WB
PPP1R13L	51141-1-AP	Rabbit Poly	ELISA, IHC, WB
PPP1R15B	10 14634-1-AP	Rabbit Poly	CoIP, ELISA, IF, IHC, IP, WB
PPP2R2B	13123-1-AP	Rabbit Poly	ELISA, IF, IP, WB
PPP3CC	19653-1-AP	Rabbit Poly	ELISA, WB
PPP3CC	55163-1-AP	Rabbit Poly	ELISA, WB
PPP3R1	13210-1-AP	Rabbit Poly	ELISA, IHC, IP, WB
PPP4C	10262-1-AP	Rabbit Poly	ELISA, IF, IP, WB
PPP5C	11715-1-AP	Rabbit Poly	ELISA, IHC, WB
PPPDE1	3 20517-1-AP	Rabbit Poly	ELISA, IF, IHC, IP, WB
PRAME	11438-1-AP	Rabbit Poly	ELISA, IP, WB
Presenilin-1-Specific	16163-1-AP	Rabbit Poly	ELISA, IP, WB
PRMT1	11279-1-AP	Rabbit Poly	ELISA, FC, IF, IHC, WB

Antibody Name	Cat. No.	Type	Applications
PRMT6	15395-1-AP	Rabbit Poly	ELISA, IHC, IP, WB
PRODH	22980-1-AP	Rabbit Poly	ELISA, IHC, WB
Prohibitin	6 10787-1-AP	Rabbit Poly	ELISA, IF, IHC, WB
Prohibitin	60092-1-Ig	Mouse Mono	ELISA, IF, IHC, WB
Prohibitin 2	5 12295-1-AP	Rabbit Poly	ELISA, IF, IHC, IP, WB
PrP	12555-1-AP	Rabbit Poly	ELISA, FC, IHC, IP, WB
PRPF19	15414-1-AP	Rabbit Poly	ELISA, WB
PRUNE2	2 11458-1-AP	Rabbit Poly	ELISA, IHC, WB
PRX5	4 17724-1-AP	Rabbit Poly	ELISA, IF, IHC, WB
PSMA1	11175-1-AP	Rabbit Poly	ELISA, IF, IHC, WB
PSMA2	14377-1-AP	Rabbit Poly	ELISA, IF, WB
PSMA3	11887-1-AP	Rabbit Poly	ELISA, IF, IHC, WB
PSMA4	11943-2-AP	Rabbit Poly	ELISA, IF, IHC, IP, WB
PSMA6	11573-1-AP	Rabbit Poly	ELISA, IF, IHC, IP, WB
PSMA7	15219-1-AP	Rabbit Poly	ELISA, FC, IF, IHC, IP, WB
PSMA8	14022-1-AP	Rabbit Poly	ELISA, FC, IF, IHC, WB
PSMB1	3 11749-1-AP	Rabbit Poly	ELISA, IF, IHC, WB
PSMB10	15976-1-AP	Rabbit Poly	ELISA, IHC, WB
PSMB11	55143-1-AP	Rabbit Poly	ELISA, WB
PSMB2	15154-1-AP	Rabbit Poly	ELISA, IF, IHC, WB
PSMB3	15983-1-AP	Rabbit Poly	ELISA, IF, IHC, WB
PSMB4	11029-1-AP	Rabbit Poly	ELISA, IF, IHC, WB
PSMB5	19178-1-AP	Rabbit Poly	ELISA, IF, IHC, WB
PSMB6	11684-2-AP	Rabbit Poly	ELISA, IF, IHC, WB
PSMB7	14727-1-AP	Rabbit Poly	ELISA, IHC, WB
PSMC1	2 11196-1-AP	Rabbit Poly	ELISA, WB
PSMC2	14905-1-AP	Rabbit Poly	ELISA, IF, IHC, IP, WB
PSMC3	24142-1-AP	Rabbit Poly	ELISA, IF, IHC, IP, WB
PSMC4	11389-1-AP	Rabbit Poly	ELISA, IF, IHC, WB
PSMC6	15839-1-AP	Rabbit Poly	ELISA, IF, WB
PSMD10	12342-2-AP	Rabbit Poly	ELISA, WB

00 This number shows the amount of times our antibody has been cited in a publication.

PSMD11  
→ RINT1

More validation images available on our website. 

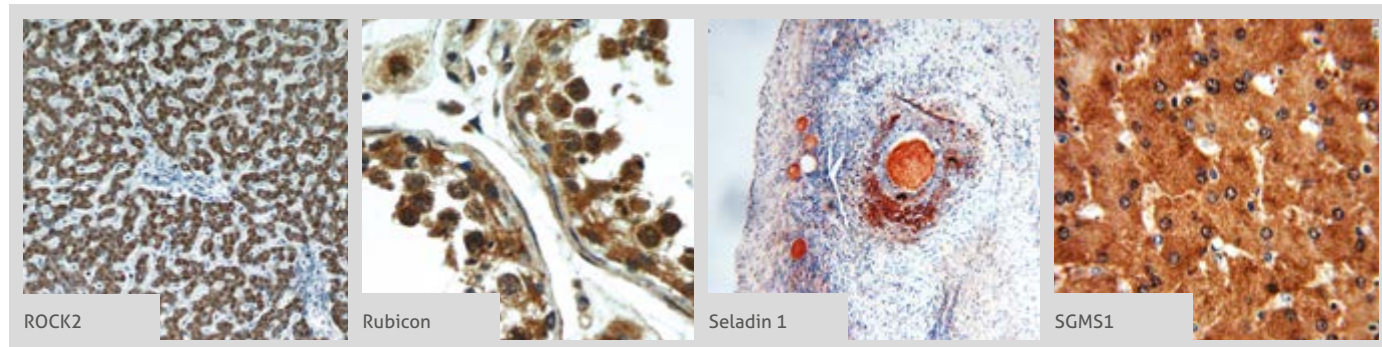


Antibody Name	Cat. No.	Type	Applications
PSMD11	<b>2</b> 14786-1-AP	Rabbit Poly	ELISA, IF, IP, WB
PSMD12	11412-1-AP	Rabbit Poly	ELISA, IF, IHC, WB
PSMD13	<b>3</b> 15261-1-AP	Rabbit Poly	ELISA, IF, IHC, WB
PSMD14	<b>2</b> 12059-1-AP	Rabbit Poly	ELISA, IF, IHC, WB
PSMD2	<b>2</b> 14748-1-AP	Rabbit Poly	ELISA, IF, IP, WB
PSMD3	12054-1-AP	Rabbit Poly	ELISA, IHC, IP, WB
PSMD4	<b>5</b> 14899-1-AP	Rabbit Poly	ELISA, FC, IF, IHC, WB
PSMD4	66179-1-Ig	Mouse Mono	ELISA, IF, IHC, WB
PSMD5	11469-1-AP	Rabbit Poly	ELISA, IHC, IP, WB
PSMD6	12539-1-AP	Rabbit Poly	ELISA, IP, WB
PSMD7	16034-1-AP	Rabbit Poly	ELISA, FC, IF, IP, WB
PSMD9	10567-1-AP	Rabbit Poly	ELISA
PSME1	10543-1-AP	Rabbit Poly	ELISA, WB
PSME3	<b>1</b> 14907-1-AP	Rabbit Poly	ELISA, IF, IHC, IP, WB
PSME4	18799-1-AP	Rabbit Poly	ELISA, IF, IP, WB
PSMF1	12941-1-AP	Rabbit Poly	ELISA, WB
PTEN	<b>9</b> 22034-1-AP	Rabbit Poly	ELISA, IF, IHC, WB
PTEN	<b>5</b> 60300-1-Ig	Mouse Mono	ELISA, IF, IHC, WB
PTGES	10596-1-AP	Rabbit Poly	ELISA
PTH-Specific	19001-1-AP	Rabbit Poly	ELISA, WB
PTPIP51	20641-1-AP	Rabbit Poly	ELISA, IF, IHC, IP, WB
PTPMT1	11493-1-AP	Rabbit Poly	ELISA, IF, IHC, WB
PTPRZ1	55125-1-AP	Rabbit Poly	ELISA, WB
PTRH2	51006-2-AP	Rabbit Poly	ELISA, IF, IHC, WB
PUF60	10810-1-AP	Rabbit Poly	ELISA, IHC, WB
PUMA	<b>6</b> 55120-1-AP	Rabbit Poly	ELISA, IHC, IP, WB
RAB11	<b>6</b> 15903-1-AP	Rabbit Poly	ELISA, IF, IHC, IP, WB
RAB11B-Specific	<b>2</b> 19742-1-AP	Rabbit Poly	ELISA, IHC, WB
RAB11-Specific	20229-1-AP	Rabbit Poly	ELISA, IF, IP, WB
Rab23	<b>2</b> 11101-1-AP	Rabbit Poly	ELISA, IHC, IP, WB
Rab23	60056-1-Ig	Mouse Mono	ELISA, WB

Antibody Name	Cat. No.	Type	Applications
RAB24	11445-1-AP	Rabbit Poly	ELISA, IHC, IP, WB
RABEP1	14350-1-AP	Rabbit Poly	ELISA, IP, WB
RACK1	10076-1-AP	Rabbit Poly	ELISA, IF, IHC, WB
RAF1	12388-1-AP	Rabbit Poly	ELISA, IHC
RAIDD	<b>2</b> 10401-1-AP	Rabbit Poly	ELISA, IHC, IP, WB
RALA	13629-1-AP	Rabbit Poly	ELISA, WB
RALB	12340-1-AP	Rabbit Poly	ELISA, IHC, WB
RASIP1	17971-1-AP	Rabbit Poly	ELISA, IF, IHC, IP, WB
RASSF4	19118-1-AP	Rabbit Poly	ELISA, IHC, WB
RASSF6	<b>4</b> 11921-1-AP	Rabbit Poly	ELISA, IF, IHC, IP, WB
RASSF7	21753-1-AP	Rabbit Poly	ELISA, IHC, WB
Rb	<b>5</b> 17218-1-AP	Rabbit Poly	ELISA, WB
RB1	<b>15</b> 10048-2-Ig	Rabbit Poly	ELISA, IHC, IP, WB
RB1CC1	<b>14</b> 10043-2-AP	Rabbit Poly	ELISA, IF, IHC, IP, WB
RB1CC1	<b>1</b> 10069-1-AP	Rabbit Poly	ELISA, IF, IHC, WB
RB1CC1	<b>8</b> 17250-1-AP	Rabbit Poly	ELISA, IF, IHC, IP, WB
RB1CC1	21269-1-AP	Rabbit Poly	ELISA, WB
RBBP6	11882-1-AP	Rabbit Poly	ELISA, IF, WB
RBL2	12685-1-AP	Rabbit Poly	ELISA
RCAS1	12255-1-AP	Rabbit Poly	ELISA, IF, IHC, IP, WB
RCAS1	66170-1-Ig	Mouse Mono	ELISA, IHC, WB
REDD1	<b>125</b> 10638-1-AP	Rabbit Poly	ELISA, IF, IHC, IP, WB
RELB	<b>1</b> 25027-1-AP	Rabbit Poly	ELISA, IF, IHC, IP, WB
Renin	14291-1-AP	Rabbit Poly	ELISA, IF, IHC, WB
RFFL	12687-1-AP	Rabbit Poly	ELISA, WB
RGN/SMP30	17947-1-AP	Rabbit Poly	ELISA, IHC, IP, WB
RGS3	12501-1-AP	Rabbit Poly	ELISA, IHC, WB
RHBDD1	20869-1-AP	Rabbit Poly	ELISA, WB
RHOB	<b>4</b> 14326-1-AP	Rabbit Poly	ELISA, IF, IHC, IP, WB
RHOT2	<b>2</b> 11237-1-AP	Rabbit Poly	ELISA, IHC, IP, WB
RINT1	14567-1-AP	Rabbit Poly	ELISA, IF, IHC, WB

**00** This number shows the amount of times our antibody has been cited in a publication.

More validation images available on our website.



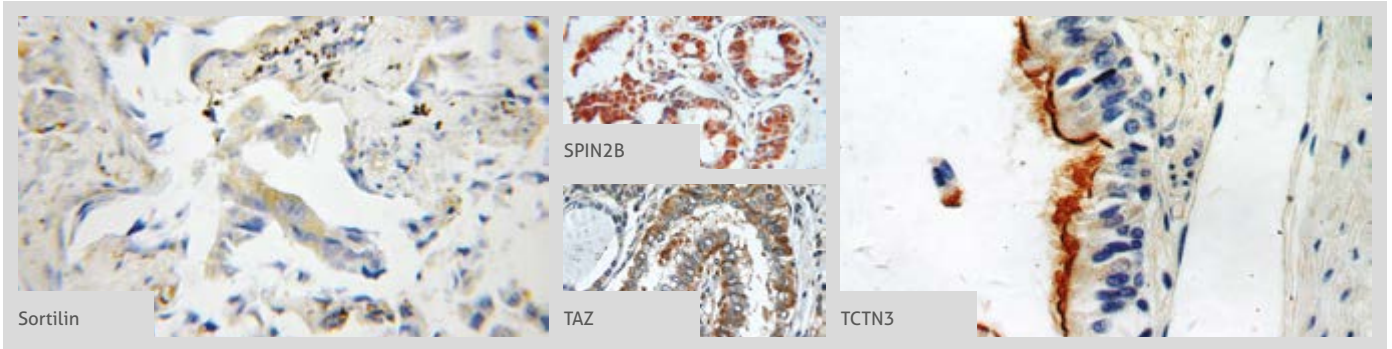
Antibody Name	Cat. No.	Type	Applications
RIP3	17563-1-AP	Rabbit Poly	ELISA, IP, WB
RIPK1-Specific	4 17519-1-AP	Rabbit Poly	ELISA, IF, IHC, IP, WB
RIPK2	15366-1-AP	Rabbit Poly	ELISA, WB
RIPK5	20102-1-AP	Rabbit Poly	ELISA, IF
RNASEL	22577-1-AP	Rabbit Poly	ELISA, IF, IHC, WB
RNF34	10629-1-AP	Rabbit Poly	ELISA, IHC, WB
RNF7	11905-1-AP	Rabbit Poly	ELISA, IF, IP, WB
RNPS1	10555-1-AP	Rabbit Poly	ELISA, IF, IP, WB
ROCK1	7 21850-1-AP	Rabbit Poly	ELISA, IHC, WB
ROCK1-Specific	20247-1-AP	Rabbit Poly	ELISA, IHC, WB
ROCK2	2 21645-1-AP	Rabbit Poly	ELISA, IF, IHC, IP, WB
ROCK2-Specific	4 20248-1-AP	Rabbit Poly	ELISA, IF, IHC, WB
ROMO1	24200-1-AP	Rabbit Poly	ELISA, IHC
RPS27A	14946-1-AP	Rabbit Poly	ELISA, IHC, WB
RPS3	6 11990-1-AP	Rabbit Poly	ELISA, IF, IHC, IP, WB
RPS3	15198-1-AP	Rabbit Poly	ELISA, IHC, IP, WB
RPS3	3 66046-1-Ig	Mouse Mono	ELISA, IF, IHC, IP, WB
RSK2	23762-1-AP	Rabbit Poly	ELISA, IF, IHC, IP, WB
RTKN	12762-1-AP	Rabbit Poly	ELISA, IHC, WB
RTN3	12055-2-AP	Rabbit Poly	ELISA, IHC, IP, WB
Rubicon	21444-1-AP	Rabbit Poly	ELISA, IHC, WB
RUVBL1	16 10210-2-AP	Rabbit Poly	ChIP, ELISA, IF, IHC, IP, Pull-Down, RIP, WB
RUVBL1	60032-1-Ig	Mouse Mono	ELISA, IF, IHC, WB
RUVBL2	5 10195-1-AP	Rabbit Poly	ELISA, IF, IHC, IP, Pull-Down, WB
RYBP	11365-1-AP	Rabbit Poly	ELISA, IP, WB
S100A14	11 10489-1-AP	Rabbit Poly	ELISA, IF, IHC, IP, WB
S100A8	15792-1-AP	Rabbit Poly	ELISA, IHC, WB
S100A9	14226-1-AP	Rabbit Poly	ELISA, IHC, WB
S100B	3 15146-1-AP	Rabbit Poly	ELISA, IF, IHC, WB
S1PR2	3 21180-1-AP	Rabbit Poly	ELISA, IF, IHC, IP, WB



Antibody Name	Cat. No.	Type	Applications
SAP18	13841-1-AP	Rabbit Poly	ELISA, IF, IHC, IP, WB
SATB1	15400-1-AP	Rabbit Poly	ELISA, IP, WB
SDF2L1	20888-1-AP	Rabbit Poly	ELISA, IHC, WB
SEC22B	14776-1-AP	Rabbit Poly	ELISA, IF, WB
Seladin 1	3 10471-1-AP	Rabbit Poly	ELISA, IHC, WB
SELS	15591-1-AP	Rabbit Poly	ELISA, IP, WB
SEPT4	12476-1-AP	Rabbit Poly	ELISA, IP, WB
SERCA2	13985-1-AP	Rabbit Poly	ELISA, WB
SERP1	17807-1-AP	Rabbit Poly	ELISA, IF, IHC, WB
SERPINB10	21719-1-AP	Rabbit Poly	ELISA, IF, IHC, WB
SET	3 55201-1-AP	Rabbit Poly	ELISA, IHC, WB
SFPQ	2 15585-1-AP	Rabbit Poly	ELISA, IF, IHC, WB
SFRP2	2 12189-1-AP	Rabbit Poly	ELISA, IHC, WB
SFRP4	15328-1-AP	Rabbit Poly	ELISA, IHC, IP, WB
SFRS2	20371-1-AP	Rabbit Poly	ELISA, IP, WB
SFRS7	11044-1-AP	Rabbit Poly	ELISA, IF, IHC, WB
SGK1	23394-1-AP	Rabbit Poly	ELISA, FC, IF, IHC, IP, WB
SGMS1	19050-1-AP	Rabbit Poly	ELISA, IHC, IP, WB
SH3BP4	17691-1-AP	Rabbit Poly	ELISA, IF, IP, WB
SH3RF1	14649-1-AP	Rabbit Poly	ELISA, IF, IHC, IP, WB
SHC	10054-1-AP	Rabbit Poly	ELISA, IF, IHC, WB
SHC	12496-1-AP	Rabbit Poly	ELISA, IF, IHC, WB
SHAH1	13886-1-AP	Rabbit Poly	ELISA, WB
SIGMAR1	15168-1-AP	Rabbit Poly	ELISA, IHC, WB
SIK1	4 51045-1-AP	Rabbit Poly	ELISA, IF, IHC, WB
SIL1	24110-1-AP	Rabbit Poly	ELISA, IF, IHC, WB
SIRT1	21 13161-1-AP	Rabbit Poly	ELISA, IF, IHC, IP, WB
SIRT1	60303-1-Ig	Mouse Mono	ELISA, IF, IHC, IP, WB
SIRT6	2 13572-1-AP	Rabbit Poly	ELISA, IF, IHC, WB
SIX1	4 10709-1-AP	Rabbit Poly	ELISA, IF, IHC, IP, WB
SKP2	4 15010-1-AP	Rabbit Poly	ELISA, IF, IHC, IP, WB

00 This number shows the amount of times our antibody has been cited in a publication.



**SLAM/CD150**  
 → **TELO2**

 More validation images available on our website. 


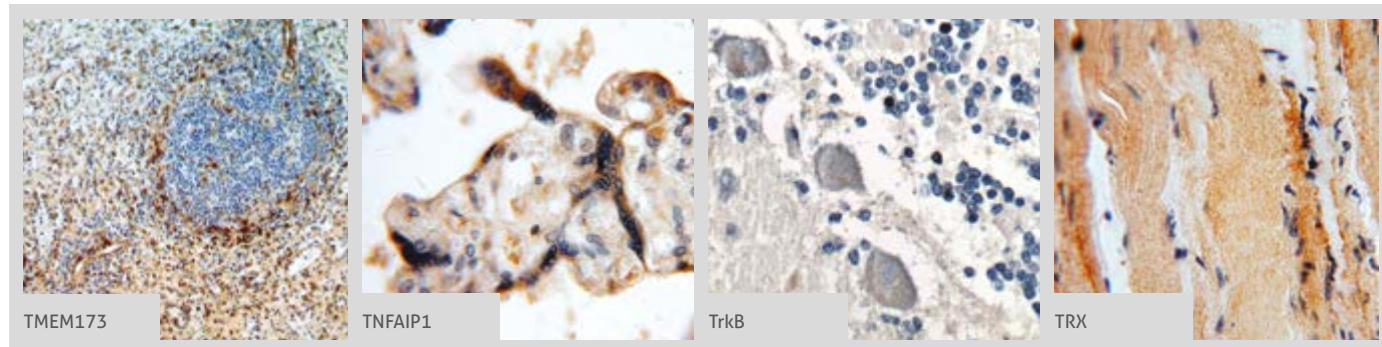
Antibody Name	Cat. No.	Type	Applications
SLAM/CD150	10949-2-AP	Rabbit Poly	ELISA, WB
SLAM/CD150	60043-1-Ig	Mouse Mono	ELISA, WB
SLC25A6	51031-1-AP	Rabbit Poly	ELISA, IHC, WB
SLC25A6-Specific	14841-1-AP	Rabbit Poly	ELISA, IF, IHC, IP, WB
SLC5A11	14089-1-AP	Rabbit Poly	ELISA, WB
SLC5A8	21433-1-AP	Rabbit Poly	ELISA, IF, WB
SLK	19743-1-AP	Rabbit Poly	ELISA, IF, WB
SLTM	17889-1-AP	Rabbit Poly	ELISA, IF, WB
SMARCA4	20650-1-AP	Rabbit Poly	ELISA, WB
SMARCA4	<b>2</b> 21634-1-AP	Rabbit Poly	ELISA, IF, IHC, IP, WB
SMARCB1	20654-1-AP	Rabbit Poly	ELISA, IHC, IP, WB
SMC5	14178-1-AP	Rabbit Poly	ELISA, IF, WB
SMC6	14465-1-AP	Rabbit Poly	ELISA, IF, IP, WB
SMNDC1	12178-1-AP	Rabbit Poly	ELISA, IHC, WB
SNAP29	<b>2</b> 12704-1-AP	Rabbit Poly	ELISA, IF, IHC, IP, WB
Sortilin	 12369-1-AP	Rabbit Poly	ELISA, FC, IHC, IP, WB
SP1	<b>11</b> 21962-1-AP	Rabbit Poly	ELISA, IF, IHC, IP, WB
SP100	<b>2</b> 11377-1-AP	Rabbit Poly	ELISA, IF, IHC, WB
Spartin, SPG20	<b>9</b> 13791-1-AP	Rabbit Poly	ELISA, FC, IF, IHC, IP, WB
SPCS1	<b>2</b> 11847-1-AP	Rabbit Poly	ELISA, IF, IHC, WB
SPIN2B	 10107-2-AP	Rabbit Poly	ELISA, IHC, WB
SRA1	18699-1-AP	Rabbit Poly	ELISA, IF, WB
SRA1	<b>4</b> 24655-1-AP	Rabbit Poly	ELISA, FC, IF, IHC, WB
SRC	<b>9</b> 11097-1-AP	Rabbit Poly	ELISA, FC, IF, IHC, IP, WB
SREBF1	<b>13</b> 14088-1-AP	Rabbit Poly	ELISA, IF, IP, WB
SREBF2	<b>15</b> 14508-1-AP	Rabbit Poly	ELISA, IHC, IP, WB
SRF	16821-1-AP	Rabbit Poly	ELISA, IF, IHC, IP, WB
SSRP1	15696-1-AP	Rabbit Poly	ELISA, IF, IHC, IP, WB
SSU72	15434-1-AP	Rabbit Poly	ELISA, WB
STAT1	<b>5</b> 10144-2-AP	Rabbit Poly	ELISA, FC, IF, IHC, IP, WB

Antibody Name	Cat. No.	Type	Applications
STAT3	<b>11</b> 10253-2-AP	Rabbit Poly	ChIP, ELISA, FC, IF, IHC, IP, WB
STAT3	60199-1-Ig	Mouse Mono	ELISA, IF, IHC, IP, WB
STAT3	<b>2</b> 51076-2-AP	Rabbit Poly	ELISA, IHC, IP, WB
STEAP3	17186-1-AP	Rabbit Poly	ELISA, IF, IHC, IP, WB
STK17A	14433-1-AP	Rabbit Poly	ELISA, IHC, WB
STK3	12097-1-AP	Rabbit Poly	ELISA, IF, IHC, WB
STK4	22245-1-AP	Rabbit Poly	ELISA, IF, IHC, IP, WB
SURVIVIN	<b>14</b> 10508-1-AP	Rabbit Poly	ELISA, IF, IHC, IP, WB
SURVIVIN-Specific	19119-1-AP	Rabbit Poly	ELISA, IF, IHC
SUZ12	20366-1-AP	Rabbit Poly	ELISA, IHC, IP, WB
Syntaxin 17	<b>3</b> 17815-1-AP	Rabbit Poly	ELISA, IF, IHC, IP, WB
Syntaxin 18	16013-1-AP	Rabbit Poly	ELISA, IHC, WB
SYVN1	<b>4</b> 13473-1-AP	Rabbit Poly	ELISA, IF, IHC, IP, WB
TAF9	10544-1-AP	Rabbit Poly	ELISA, IP, WB
TAF9B	10921-1-AP	Rabbit Poly	ELISA, IHC, IP
TAK1	<b>2</b> 12330-2-AP	Rabbit Poly	ELISA, IHC, WB
TAOK2	21188-1-AP	Rabbit Poly	ELISA, IP, WB
TAOK3	10158-2-AP	Rabbit Poly	ELISA, IHC, IP, WB
TAX1BP1	14424-1-AP	Rabbit Poly	ELISA, WB
TAZ	 <b>2</b> 23306-1-AP	Rabbit Poly	ELISA, IHC, IP, WB
TBX2	16930-1-AP	Rabbit Poly	ELISA, IHC, WB
TBX2	22346-1-AP	Rabbit Poly	ELISA, IF, WB
TBX3	<b>2</b> 16741-1-AP	Rabbit Poly	ELISA, IHC, IP, WB
TBX5	13178-1-AP	Rabbit Poly	ELISA, IF, WB
TCTN3	 16085-1-AP	Rabbit Poly	ELISA, IF, IHC, IP, WB
TDP-43	18280-1-AP	Rabbit Poly	ELISA, FC, IF, IHC, IP, WB
TEAD1	<b>2</b> 13283-1-AP	Rabbit Poly	ELISA, IP, WB
TEAD3	13120-1-AP	Rabbit Poly	ELISA, WB
TELO2	<b>6</b> 15975-1-AP	Rabbit Poly	ELISA, IF, IP, WB
TELO2	66077-1-Ig	Mouse Mono	ELISA, IF, IHC, IP, WB

**00** This number shows the amount of times our antibody has been cited in a publication.



More validation images available on our website.



Antibody Name	Cat. No.	Type	Applications
TERF1	11899-1-AP	Rabbit Poly	ELISA, IHC, IP, WB
TERF2	22020-1-AP	Rabbit Poly	ELISA, IP, WB
TFDP1	11043-1-AP	Rabbit Poly	ELISA, IHC
TFDP2	11500-1-AP	Rabbit Poly	ELISA, IP, WB
TFEB	3 13372-1-AP	Rabbit Poly	ELISA, IF, IHC, IP, WB
TFPT	10097-2-AP	Rabbit Poly	ELISA, IHC, WB
THAP1	6 12584-1-AP	Rabbit Poly	ELISA, IHC, WB
THEM2	16782-1-AP	Rabbit Poly	ELISA, IF, IHC, WB
THEM4	14692-1-AP	Rabbit Poly	ELISA, IF, IHC, WB
THOC1	2 10920-1-AP	Rabbit Poly	ELISA, IHC, WB
THOC6	15316-1-AP	Rabbit Poly	ELISA, IHC, WB
Thrombospondin -1	3 18304-1-AP	Rabbit Poly	ELISA, IF, IHC, IP, WB
Thyroglobulin	21714-1-AP	Rabbit Poly	ELISA, IHC, WB
Thyroglobulin	60272-1-Ig	Mouse Mono	ELISA, IHC, WB
TIA1	5 12133-2-AP	Rabbit Poly	ELISA, IF, IHC, IP, WB
TIAF1	20328-1-AP	Rabbit Poly	ELISA, IHC, WB
Timp-3	4 10858-1-AP	Rabbit Poly	ELISA, IHC, WB
TLK2	13979-1-AP	Rabbit Poly	ELISA, IF, WB
TMED4	14141-1-AP	Rabbit Poly	ELISA, IF, WB
TMEM102	25505-1-AP	Rabbit Poly	ELISA, WB
TMEM173	4 19851-1-AP	Rabbit Poly	ELISA, FC, IF, IHC, IP, WB
TMEM59	24134-1-AP	Rabbit Poly	ELISA, IF, IHC, WB
TMS1	14 10500-1-AP	Rabbit Poly	ELISA, IHC, IP, WB
TNF alpha	12 60291-1-Ig	Mouse Mono	ELISA, IHC, WB
TNFAIP1	15320-1-AP	Rabbit Poly	ELISA, IF, IHC, WB
TNFAIP3	3 23456-1-AP	Rabbit Poly	ELISA, WB
TNFAIP8	2 15790-1-AP	Rabbit Poly	ELISA, IHC, WB
TNFAIP8L2	4 15940-1-AP	Rabbit Poly	ELISA, IF, IHC, IP, WB
TNF-alpha	12 17590-1-AP	Rabbit Poly	ELISA, IHC, WB
TNFR1	5 21574-1-AP	Rabbit Poly	ELISA, FC, IF, IHC, WB

Antibody Name	Cat. No.	Type	Applications
TNFR1	60192-1-Ig	Mouse Mono	ELISA, FC, IHC, WB
TNFR2	19272-1-AP	Rabbit Poly	ELISA, FC, IF, IHC, IP, WB
TNFSF13B	11862-1-AP	Rabbit Poly	ELISA, WB
TNIP2	15459-1-AP	Rabbit Poly	ELISA, IF, IHC, WB
Toca 1	55055-1-AP	Rabbit Poly	ELISA, WB
TRADD	15468-1-AP	Rabbit Poly	ELISA, WB
TRAF1	11543-1-AP	Rabbit Poly	ELISA, WB
TRAF3	18099-1-AP	Rabbit Poly	ELISA, FC, IP, WB
TRAF4	10083-2-AP	Rabbit Poly	ELISA, IHC, WB
TRAF5	12868-1-AP	Rabbit Poly	ELISA, IHC, WB
TRAF6	5 12809-1-AP	Rabbit Poly	ELISA, IF, IHC, WB
TRAIL	4 17235-1-AP	Rabbit Poly	ELISA, IF, IP, WB
transgelin/ SM22	22 10493-1-AP	Rabbit Poly	ELISA, FC, IF, IHC, WB
transgelin/ SM22	60213-1-Ig	Mouse Mono	ELISA, IHC, WB
transgelin/ SM22	15502-1-AP	Rabbit Poly	ELISA, IHC, WB
Trefoil factor 1	2 13734-1-AP	Rabbit Poly	ELISA, IF, IHC, WB
TRIB3	2 13300-1-AP	Rabbit Poly	ELISA, IHC, IP, WB
TRIM21	2 12108-1-AP	Rabbit Poly	ELISA, IF, IHC, IP, WB
TRIM24	8 14208-1-AP	Rabbit Poly	ELISA, IF, IHC, IP, WB
TRIM27	2 12205-1-AP	Rabbit Poly	ELISA, IF, IHC, IP, WB
TRIM39	12757-1-AP	Rabbit Poly	ELISA, WB
TRIM69	12951-1-AP	Rabbit Poly	ELISA, IHC, WB
TrkB	13129-1-AP	Rabbit Poly	ELISA, IHC, IP, WB
TRPS1	20003-1-AP	Rabbit Poly	ELISA, IF, IHC, IP, WB
TRPS1	21938-1-AP	Rabbit Poly	ELISA, IP, WB
TRX	6 14999-1-AP	Rabbit Poly	CoIP, ELISA, FC, IF, IHC, IP, WB
TRX2	10 13089-1-AP	Rabbit Poly	ELISA, IF, IHC, WB
TUSC2	11538-1-AP	Rabbit Poly	ELISA, IF, IHC, WB
TWIST1	9 18125-1-AP	Rabbit Poly	ELISA, WB
TWIST1	25465-1-AP	Rabbit Poly	ELISA, IP, WB

00 This number shows the amount of times our antibody has been cited in a publication.

TXNDC4  
→ ZW10

Antibody Name	Cat. No.	Type	Applications
TXNDC4	16016-1-AP	Rabbit Poly	ELISA, IF, IHC, IP, WB
U2AF65	15624-1-AP	Rabbit Poly	ELISA, IHC, WB
UBA52	18039-1-AP	Rabbit Poly	ELISA, IHC, WB
UBD	6 13003-2-AP	Rabbit Poly	ELISA, IHC, WB
UBE2D3	3 11677-1-AP	Rabbit Poly	ELISA, IHC, WB
UBE2K	11834-3-AP	Rabbit Poly	ELISA, IHC, WB
UBE2L3	14415-1-AP	Rabbit Poly	ELISA, IP, WB
UBE2L6	17278-1-AP	Rabbit Poly	ELISA, IF, IP, WB
UBE2Z	16928-1-AP	Rabbit Poly	ELISA, WB
UBE4B	2 18148-1-AP	Rabbit Poly	ELISA, IF, IHC, IP, WB
ubiquitin	15 10201-2-AP	Rabbit Poly	ELISA, IF, IHC, IP, WB
ubiquitin	60310-1-Ig	Mouse Mono	ELISA
UBN1-Specific	20363-1-AP	Rabbit Poly	ELISA, IHC, WB
UBXD2	21052-1-AP	Rabbit Poly	ELISA, IF, IHC, IP, WB
UFD1L	3 10615-1-AP	Rabbit Poly	ELISA, IF, IHC, IP, WB
UNC5A	22068-1-AP	Rabbit Poly	ELISA, FC, WB
UNC5A-Specific	20239-1-AP	Rabbit Poly	ELISA, FC, WB
UNC5C-Specific	20240-1-AP	Rabbit Poly	ELISA, WB
UNC5D-Specific	20241-1-AP	Rabbit Poly	ELISA, WB
USE1	25218-1-AP	Rabbit Poly	ELISA, WB
USP10	19374-1-AP	Rabbit Poly	ELISA, IF, IP, WB
USP13	66176-1-Ig	Mouse Mono	ELISA, IF, IHC, WB
USP13	3 16840-1-AP	Rabbit Poly	ELISA, IHC, IP, WB
USP28	3 17707-1-AP	Rabbit Poly	ELISA, IHC, IP, WB
UVRAG	19571-1-AP	Rabbit Poly	ELISA, IF, IP, WB
VAMP8	15546-1-AP	Rabbit Poly	ELISA, WB
VASH1	12730-1-AP	Rabbit Poly	ELISA, WB
VDAC1	55259-1-AP	Rabbit Poly	ELISA, FC, IHC, IP, WB
VDAC1/Porin	23 10866-1-AP	Rabbit Poly	ELISA, IF, IHC, IP, WB
VEGF	52 19003-1-AP	Rabbit Poly	ELISA, IF, IHC, IP, WB
VEGFR3	20712-1-AP	Rabbit Poly	ELISA, WB
Villin	16488-1-AP	Rabbit Poly	ELISA, IF, IHC, IP, WB
Villin	66096-1-Ig	Mouse Mono	ELISA, IF, IHC, IP, WB
Vimentin	65 10366-1-AP	Rabbit Poly	ELISA, FC, IF, IHC, WB
Vimentin	22031-1-AP	Rabbit Poly	ELISA, WB
VMA21	21921-1-AP	Rabbit Poly	ELISA, IHC, IP, WB
VPRBP	19 11612-1-AP	Rabbit Poly	ELISA, FC, IF, IHC, IP, WB
VPS24	15472-1-AP	Rabbit Poly	ELISA, IF, IHC, IP, WB
VPS34	2 12452-1-AP	Rabbit Poly	ELISA, IF, IHC, WB

Antibody Name	Cat. No.	Type	Applications
VPS34	13723-1-AP	Rabbit Poly	ELISA, IHC, WB
VPS45	2 12006-1-AP	Rabbit Poly	ELISA, IF, IHC, WB
VPS45	12616-1-AP	Rabbit Poly	ELISA, WB
VRK2	12946-1-AP	Rabbit Poly	ELISA, IP, WB
VTI1A	4 12354-1-AP	Rabbit Poly	ELISA, IF, IP, WB
VTI1B	14495-1-AP	Rabbit Poly	ELISA, IHC, IP, WB
WDFY3	55009-1-AP	Rabbit Poly	ELISA, IF, IHC
WDR45	19194-1-AP	Rabbit Poly	ELISA, IF, IHC, WB
WFS1	17 11558-1-AP	Rabbit Poly	CoIP, ELISA, IF, IHC, IP, WB
WIPI1	25204-1-AP	Rabbit Poly	ELISA, WB
WIPI2	15432-1-AP	Rabbit Poly	ELISA, WB
WISP1	2 18166-1-AP	Rabbit Poly	ELISA, IHC, IP, WB
WWOX	15299-1-AP	Rabbit Poly	ELISA, IP, WB
XBP1	24168-1-AP	Rabbit Poly	ELISA, IHC, WB
XBP1S	24868-1-AP	Rabbit Poly	ELISA, IHC, WB
XIAP	13 10037-1-Ig	Rabbit Poly	ELISA, IF, IHC, WB
XIAP	23453-1-AP	Rabbit Poly	ELISA, WB
YAP1	12 13584-1-AP	Rabbit Poly	ELISA, FC, IF, IHC, IP, WB
YES1-Specific	20243-1-AP	Rabbit Poly	ELISA, IHC, IP, WB
YPEL3	2 15403-1-AP	Rabbit Poly	ELISA, WB
YWHAB	10936-1-AP	Rabbit Poly	ELISA, IHC
YWHAH	15222-1-AP	Rabbit Poly	ELISA, IF, IP, WB
YWHAZ	14881-1-AP	Rabbit Poly	ELISA, WB
ZC3H12A	25009-1-AP	Rabbit Poly	ELISA, IHC, IP, WB
ZFYVE27	2 12680-1-AP	Rabbit Poly	ELISA, IF, IP, WB
ZIP kinase	19540-1-AP	Rabbit Poly	ELISA, IF, WB
ZIPK-Phospho 311Ser	51021-1-AP	Rabbit Poly	ELISA, IF, IHC, IP, WB
ZKSCAN3	20800-1-AP	Rabbit Poly	ELISA, IF, WB
ZMAT3	10504-1-AP	Rabbit Poly	ELISA, IF, IP, WB
ZNHIT1	16595-1-AP	Rabbit Poly	ELISA, WB
ZO-1	21 21773-1-AP	Rabbit Poly	ELISA, FC, IF, IHC, IP, WB
ZO-2	18900-1-AP	Rabbit Poly	ELISA, IF, WB
ZW10	24561-1-AP	Rabbit Poly	ELISA, IF, IP, WB

00 This number shows the amount of times our antibody has been cited in a publication.

# CONTACT US

## Proteintech Group

*US Head Office*

**PHONE** 1 (888) 4PTGLAB  
(1-888-478-4522)  
(toll free in USA),  
or 1(312) 455-8498  
(outside USA)

**FAX** 1 (312) 455-8408

**ADDRESS** Proteintech Group, Inc.  
5400 Pearl Street, Suite 300,  
Rosemont, IL 60018, USA

**EMAIL** proteintech@ptglab.com

## Proteintech Europe

*United Kingdom*

**PHONE** +44 (161) 8393007

**FAX** +44 (161) 2413103

**ADDRESS** Proteintech Europe, Ltd.  
4th Floor,  
196 Deansgate,  
Manchester, M3 3WF

**EMAIL** europe@ptglab.com

## Proteintech Europe

*Germany*

**EMAIL** germany@ptglab.com  
**Sales and technical support only.**

## Proteintech

*China Office*

**PHONE** 027-87531629  
or 4006-900-926

**FAX** 027-87531627

**ADDRESS** Wuhan Sanying Biotechnologies  
D3-3, No.666 Gaoxin Avenue,  
Wuhan East Lake Hi-tech Development Zone  
Wuhan, Hubei, P.R.C

**EMAIL** service@ptglab.com

## Support

Available 24 hours via Live Chat and 9-5 (CDT) via phone.

Email support also available.

**LIVE CHAT**  
[www.ptglab.com](http://www.ptglab.com)

**TWITTER**  
[@proteintech](https://twitter.com/proteintech)

**BLOG**  
[www.ptglab.com/news/blog](http://www.ptglab.com/news/blog)

**YOUTUBE**  
[www.youtube.com/Proteintech](http://www.youtube.com/Proteintech)



We are ISO 9001 and  
ISO 13485 accredited.



