

# CD MARKER ANTIBODIES

[www.ptglab.com](http://www.ptglab.com)

## Introduction

The cluster of differentiation (abbreviated as CD) is a protocol used for the identification and investigation of cell surface molecules. So-called CD markers are routinely used for the immunophenotyping of cells. Despite this use, they are not limited to roles in the immune system and perform a variety of roles in cell differentiation, adhesion, migration, blood clotting, gamete fertilization, amino acid transport and apoptosis, among many others. As such, Proteintech's mini catalog featuring its antibodies targeting CD markers is applicable to a wide range of research disciplines.

## PRODUCT FOCUS

### PECAM1

CD Number  
**CD31**

Catalog Number  
**11256-1-AP**

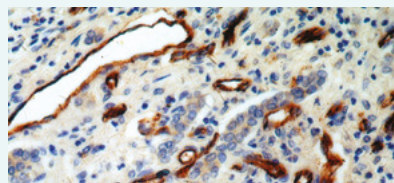
Type  
**Rabbit Polyclonal**

Applications  
**ELISA, FC, IF, IHC, IP, WB**

**16 Publications**

**KD/KO Validated**

Platelet endothelial cell adhesion molecule-1 (PECAM1), also known as cluster of differentiation 31 (CD31), is a member of the immunoglobulin gene superfamily of cell adhesion molecules. It is highly expressed on the surface of the endothelium – the thin layer of endothelial cells lining the interior



Immunohistochemical of paraffin-embedded human hepatocirrhosis using PECAM1, CD31 antibody (11265-1-AP) at a dilution of 1:50 (40x objective).

of blood vessels – making up a large portion of its intracellular junctions. PECAM-1 is also present on the surface of hematopoietic cells and immune cells including platelets, monocytes, neutrophils, natural killer cells, megakaryocytes and some types of T-cell.

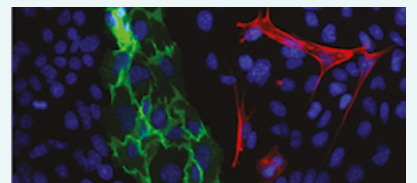


Figure 1: Immunofluorescence staining of PECAM1 (11256-1-AP), Alexa 488 goat anti-rabbit (green), and smooth muscle alpha-actin (red), courtesy of Nicola Smart.

### PECAM1: Customer Testimonial

Nicola Smart, a cardiovascular researcher and a group leader at the University of Oxford, has said of the PECAM1 antibody (11265-1-AP) that it *"worked beautifully on every occasion I've tried it."*

Smart has previously donated some of her optimization data to Proteintech<sup>®</sup>, obtained whilst working at UCL in Paul Riley's group (see Figure 1).

*"As you can see [the immunostaining] is extremely clean and specific [and] displays strong intercellular junction expression, as expected for a cell adhesion molecule."*

Proteintech thanks Dr. Smart for sharing her data and comments.

## PRODUCT FOCUS

### NCAM1/CD56

**CD Number**  
**CD56**

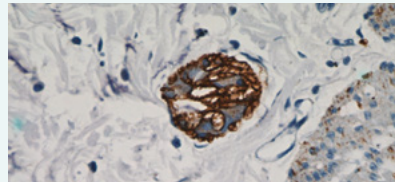
**Catalog Number**  
**14255-1-AP**

**Type**  
**Rabbit Polyclonal**

**Applications**  
**ELISA, FC, IF, IHC, WB**

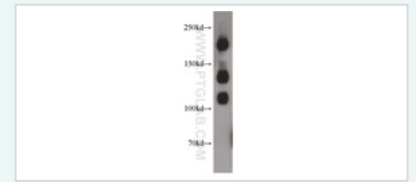
**5 Publications**

Neural cell adhesion molecule 1 (NCAM1, also known as CD56) is a cell adhesion glycoprotein of the immunoglobulin (Ig) superfamily. It is a multifunction protein involved in synaptic plasticity, neurodevelopment, and neurogenesis. NCAM1 is expressed on human neurons, glial cells, skeletal muscle cells, NK cells and a subset of T cells, and the expression



*Immunohistochemical staining of paraffin-embedded human colon tissue using NCAM1 antibody (14255-1-AP) at a dilution of 1:50 (40x objective).*

is observed in a wide variety of human tumors, including myeloma, myeloid leukemia, neuroendocrine tumors, Wilms' tumor, neuroblastoma, and NK/T cell lymphomas. Three major isoforms of NCAM1, with molecular masses of 120, 140, and 180 kDa, are generated by alternative splicing of mRNA (PMID: 9696812).



*Mouse brain tissue lysate was separated by SDS PAGE, followed by Western blot experiment using NCAM1 antibody (14255-1-AP) at a dilution of 1:1000.*

### E-cadherin

**CD Number**  
**CD324**

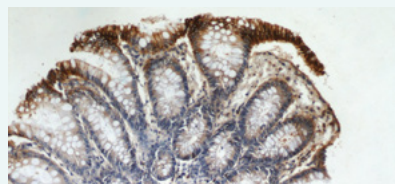
**Catalog Number**  
**20874-1-AP**

**Type**  
**Rabbit Polyclonal**

**Applications**  
**ELISA, FC, IF, IHC, IP, WB**

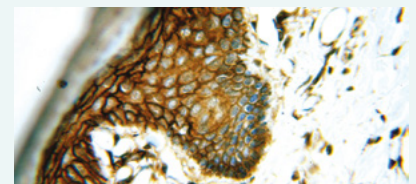
**67 Publications**

Cadherins are a family of transmembrane glycoproteins that mediate calcium-dependent cell-cell adhesion and play an important role in the maintenance of normal tissue architecture. E-cadherin (epithelial cadherin), also known as CDH1 (cadherin 1) or CAM 120/80, is a classical member of the cadherin superfamily that



*Immunohistochemical of paraffin-embedded human colon using E-cadherin antibody (20874-1-AP) at a dilution of 1:50 (10x objective).*

also includes N-, P-, R-, and B-cadherins. E-cadherin is expressed on the cell surface in most epithelial tissues. It is important for the maintenance of the epithelial integrity, and is involved in mechanisms regulating proliferation, differentiation, and survival of epithelial cells. E-cadherin may also play a role in tumorigenesis.



*Immunohistochemical of paraffin-embedded human skin using E-cadherin antibody (20874-1-AP) at a dilution of 1:50 (40x objective).*

### FAS/CD95

**CD Number**  
**CD95**

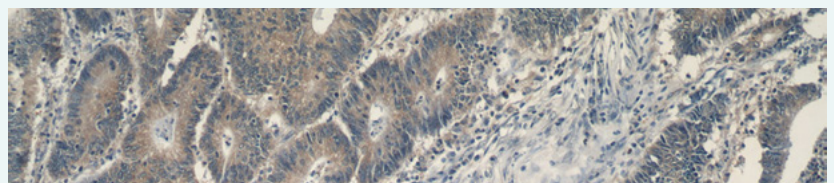
**Catalog Number**  
**13098-1-AP**

**Type**  
**Rabbit Polyclonal**

**Applications**  
**ELISA, FC, IF, IHC, IP, WB**

**17 Publications**

FAS, also named as CD95, APO-1, APT1, FAS1 and TNFRSF6, is a cell surface receptor belonging to the TNF receptor superfamily. It can mediate apoptosis by ligation to an agonistic anti-Fas antibody or Fas ligand. Stimulation of Fas results in the aggregation



*Immunohistochemistry of paraffin-embedded human colon cancer tissue slide using FAS Antibody (13098-1-AP) at a dilution of 1:50 (10x objective).*

of its intracellular death domains, leading to the formation of the death-inducing signaling complex (DISC). FAS-mediated apoptosis may have a role in the induction of peripheral tolerance, in the antigen-stimulated suicide of mature T-cells, or both.

## CD44

CD Number  
**CD44**

Catalog Number  
**15675-1-AP**

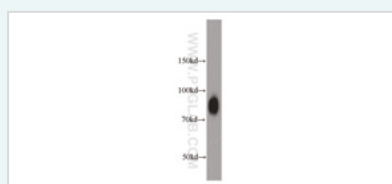
Type  
**Rabbit Polyclonal**

Applications  
**ELISA, FC, IF, IHC, IP, WB**

**23 Publications**

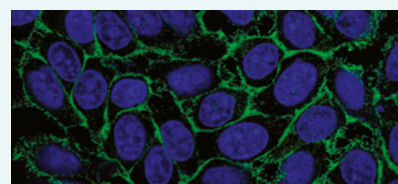
**KD/KO Validated**

CD44 is a type I transmembrane glycoprotein that mediates cell-cell and cell-matrix interactions through its affinity for hyaluronic acid (HA) and other ligands. Adhesion with HA plays an important role in cell migration, tumor growth and progression.



*HeLa cells were subjected to SDS PAGE followed by Western blot with CD44 antibody (15675-1-AP) at a dilution of 1:1000.*

CD44 is also involved in lymphocyte activation, recirculation and homing, and in hematopoiesis. This protein exists in multiple isoforms generated by alternative RNA splicing and undergoes extensive post-translational modifications.



*Immunofluorescent analysis of (-20°C Ethanol) fixed HepG2 cells using CD44 antibody (15675-1-AP) at a dilution of 1:100, and Alexa Fluor 488-conjugated AffiniPure Goat Anti-Rabbit IgG(H+L).*

## CD146/MCAM

CD Number  
**CD146**

Catalog Number  
**17564-1-AP**

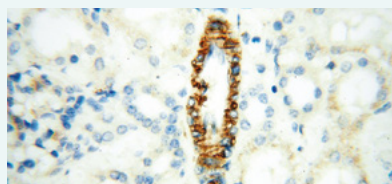
Type  
**Rabbit Polyclonal**

Applications  
**ELISA, FC, IF, IHC, IP, WB**

**3 Publications**

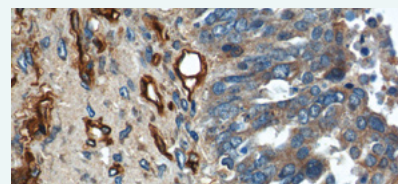
**KD/KO Validated**

Melanoma cell adhesion molecule (MCAM), CD146 or MUC18, was originally identified as a biomarker of melanoma progression and is a transmembrane glycoprotein belonging to the immunoglobulin (Ig) superfamily (PMID: 8378324). Structurally it consists of five Ig domains, a transmembrane domain and a



*Immunohistochemical of paraffin-embedded human kidney using CD146/MCAM antibody (17564-1-AP) at a dilution of 1:100 (40x objective).*

cytoplasmic region. In normal adult tissues MCAM is primarily expressed by vascular endothelium and smooth muscle. MCAM is a key cell adhesion protein in vascular endothelial cell activity and angiogenesis, and has been used as marker of circulating endothelial cells (CECs) (PMID: 19356677).



*Immunohistochemistry of paraffin-embedded human ovary tumor tissue slide using CD146/MCAM antibody (17564-1-AP) at a dilution of 1:200 (40x objective).*

# OPTIMIZE YOUR ANTIBODY EXPERIMENTS WITH PROTEINTECH

Request your free technical guide from [ptglab.com](http://ptglab.com).



# THE BENCHMARK IN ANTIBODIES

Since the day it was founded, Proteintech has been making all of its products to the highest standards possible whilst taking complete responsibility for the quality of each product.



- Proteintech makes every single antibody in its 12,000+ catalog.
- Each Proteintech product is unique and cannot be bought under a different label.
- Antibodies are tested with siRNA treated samples to demonstrate specificity.
- It works in every single species and application or get a full money-back refund.

**Proteintech has over 12,000 antibodies in its extensive catalog, all fully validated and available for next day delivery.**



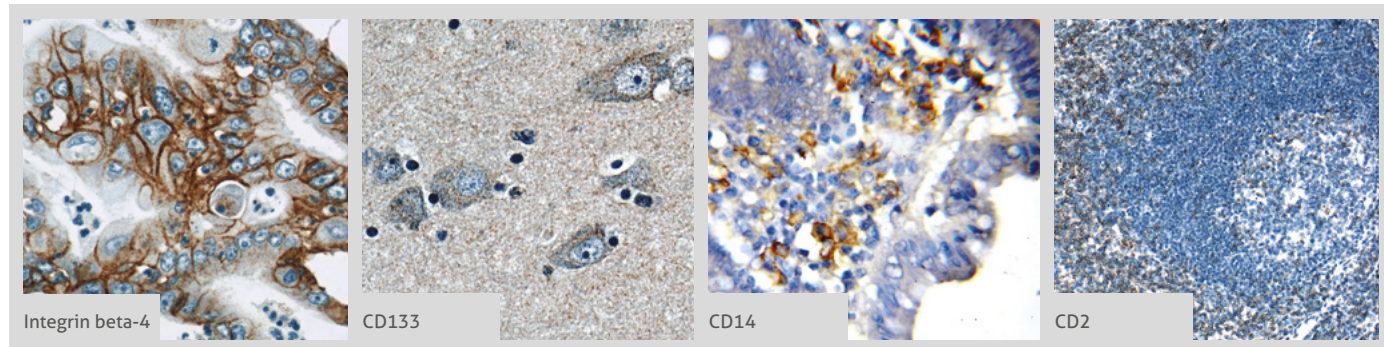
CD10  
→ CD134

# ANTIBODY PRODUCT LIST

CD No.	Antibody Name	Cat. No.	Type	Applications	CD No.	Antibody Name	Cat. No.	Type	Applications
CD10	MME/Nepilysin	<b>2</b> 18008-1-AP	Rabbit Poly	ELISA, FC, IHC, IP, WB	CD11c	CD11c/ Integrin alpha X	<b>3</b> 17342-1-AP	Rabbit Poly	ELISA, FC, IHC, WB
CD10	MME/Nepilysin	10302-1-AP	Rabbit Poly	ELISA, FC, IHC, WB	CD11c	CD11c/ Integrin alpha X	<b>3</b> 60258-1-Ig	Mouse Mono	ELISA, IHC, WB
CD10	MME/Nepilysin	23782-1-AP	Rabbit Poly	ELISA, FC, IHC	CD11d	CD11d/ Integrin alpha D	55162-1-AP	Rabbit Poly	ELISA, WB
CD10	MME/Nepilysin	23898-1-AP	Rabbit Poly	ELISA, FC, IF, WB	CD120a	TNFR1	<b>6</b> 21574-1-AP	Rabbit Poly	ELISA, FC, IF, IHC, WB
CD10	MME/Nepilysin	60034-3-Ig	Mouse Mono	ELISA, IHC, WB	CD120a	TNFR1	60192-1-Ig	Mouse Mono	ELISA, FC, IHC, WB
CD102	ICAM2	<b>2</b> 10121-2-AP	Rabbit Poly	ELISA, IHC, WB	CD120b	TNFR2	<b>2</b> 19272-1-AP	Rabbit Poly	ELISA, FC, IF, IHC, IP, WB
CD104	Integrin beta-4	 21738-1-AP	Rabbit Poly	ELISA, FC, IHC, IP, WB	CD121b	IL1R2	13591-1-AP	Rabbit Poly	ELISA, WB
CD105	Endoglin/CD105	<b>3</b> 10862-1-AP	Rabbit Poly	ELISA, IHC, IP, WB	CD121b	IL1R2	60262-1-Ig	Mouse Mono	ELISA, IF, WB
CD106	VCAM-1	<b>10</b> 11444-1-AP	Rabbit Poly	ELISA, FC, IF, IHC, WB	CD122	IL2RB	13602-1-AP	Rabbit Poly	ELISA, WB
CD107a	LAMP1	<b>2</b> 21997-1-AP	Rabbit Poly	ELISA, IF, IHC, IP, WB	CD123	IL3RA	13655-1-AP	Rabbit Poly	ELISA, WB
CD107a	LAMP1	55273-1-AP	Rabbit Poly	ELISA, IF, WB	CD125	IL5RA	12655-1-AP	Rabbit Poly	ELISA, IF, IHC, WB
CD109	CD109	18715-1-AP	Rabbit Poly	ELISA, IP, WB	CD126	IL6R	<b>1</b> 23457-1-AP	Rabbit Poly	ELISA, IP, WB
CD112	Nectin 2	<b>1</b> 10100-2-AP	Rabbit Poly	ELISA, FC, IF, WB	CD127	CD127/IL7R	17626-1-AP	Rabbit Poly	ELISA, FC, IP, WB
CD113	PVRL3, Nectin 3	<b>1</b> 11213-1-AP	Rabbit Poly	ELISA, IF, IHC, IP, WB	CD128	CXCR1	55450-1-AP	Rabbit Poly	ELISA, IP, WB
CD114	G-CSFR	18310-1-AP	Rabbit Poly	ELISA, FC, WB	CD13	CD13	<b>1</b> 14553-1-AP	Rabbit Poly	ELISA, FC, IHC, WB
CD116	CSF2RA/CD116	18307-1-AP	Rabbit Poly	ELISA, IHC, WB	CD132	IL2RG	11409-1-AP	Rabbit Poly	ELISA, FC, WB
CD117	c-Kit/CD117	18696-1-AP	Rabbit Poly	ELISA, FC, IF, IHC, WB	CD133	CD133	<b>17</b> 18470-1-AP	Rabbit Poly	ELISA, FC, IF, IHC, WB
CD118	LIFR	22779-1-AP	Rabbit Poly	ELISA, FC, IHC, IP, WB	CD133	CD133	 18495-1-AP	Rabbit Poly	ELISA, IHC, WB
CD119	IFNGR1	<b>1</b> 10808-1-AP	Rabbit Poly	ELISA, FC, IHC, IP, WB	CD133	CD133-1, 2, 4, 7	19945-1-AP	Rabbit Poly	ELISA, IHC, IP, WB
CD11b	CD11b/ Integrin alpha M	<b>2</b> 20991-1-AP	Rabbit Poly	ELISA, FC, IHC, WB	CD133	CD133-1, 2	19946-1-AP	Rabbit Poly	ELISA, IP, WB
CD11b	CD11b/ Integrin alpha M	21851-1-AP	Rabbit Poly	ELISA, IHC	CD134	CD134/OX40	20006-1-AP	Rabbit Poly	ELISA, FC, WB

**00** This number shows the amount of times our antibody has been cited in a publication.

More validation images available on our website.



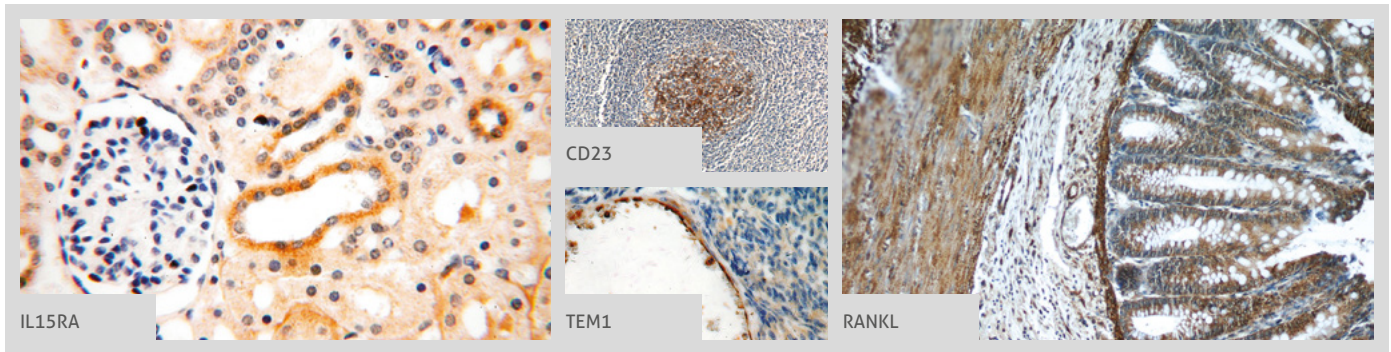
CD No.	Antibody Name	Cat. No.	Type	Applications
CD135	FLT3	21049-1-AP	Rabbit Poly	ELISA, IP, WB
CD136	RON, MST1R	11053-1-AP	Rabbit Poly	ELISA, WB
CD138	CD138/ Syndecan-1	3 10593-1-AP	Rabbit Poly	CoIP, Dot Blotting, ELISA, IF, IHC, WB
CD138	CD138/ Syndecan-1	60185-1-Ig	Mouse Mono	ELISA, WB
CD138	CD138/ Syndecan-1	60185-2-Ig	Mouse Mono	ELISA, IHC, WB
CD14	CD14	4 17000-1-AP	Rabbit Poly	ELISA, FC, IF, IHC, WB
CD14	CD14	1 60253-1-Ig	Mouse Mono	ELISA, IF, IHC, WB
CD140b	PDGFRB	1 13449-1-AP	Rabbit Poly	ELISA, FC, WB
CD141	Thrombomodulin	14318-1-AP	Rabbit Poly	ELISA, FC, IHC, WB
CD146	CD146/MCAM	3 17564-1-AP	Rabbit Poly	ELISA, FC, IF, IHC, IP, WB
CD146	CD146/MCAM	66153-1-Ig	Mouse Mono	ELISA, FC, IHC, WB
CD147	CD147	7 11989-1-AP	Rabbit Poly	ELISA, IF, IHC, IP, WB
CD148	PTPRJ	1 55123-1-AP	Rabbit Poly	ELISA, IHC, WB
CD15	FUT4	8 19497-1-AP	Rabbit Poly	ELISA, IF, IHC, IP, WB
CD150	SLAM/CD150	10949-2-AP	Rabbit Poly	ELISA, WB
CD151	CD151	1 10418-1-AP	Rabbit Poly	ELISA, IP, WB
CD154	CD154	2 16668-1-AP	Rabbit Poly	ELISA, IF, IHC, IP, WB
CD156b	ADAM17-Specific	20259-1-AP	Rabbit Poly	ELISA, IHC, WB
CD159a	NKG2A	1 10935-1-AP	Rabbit Poly	ELISA, IHC, WB
CD164	CD164	12083-2-AP	Rabbit Poly	ELISA, FC, IHC, WB
CD166	ALCAM	21972-1-AP	Rabbit Poly	ELISA, IHC, WB
CD167	DDR1	1 10536-1-AP	Rabbit Poly	ELISA, IHC, WB
CD168	HMMR-Specific	1 15820-1-AP	Rabbit Poly	ELISA, FC, IF, IHC, WB
CD170	SIGLEC5	13230-1-AP	Rabbit Poly	ELISA, WB
























CD No.	Antibody Name	Cat. No.	Type	Applications
CD172a	SIRP alpha	14482-1-AP	Rabbit Poly	ELISA, WB
CD172b	SIRP BETA 1	2 11811-1-AP	Rabbit Poly	ELISA, IHC, WB
CD172g	SIRP gamma	11857-1-AP	Rabbit Poly	ELISA, WB
CD181	CXCR1	55450-1-AP	Rabbit Poly	ELISA, IP, WB
CD182	CXCR2	20634-1-AP	Rabbit Poly	ELISA, IF, IHC, IP, WB
CD183	CXCR3B-specific	5 60065-1-Ig	Mouse Mono	ELISA, FC, IF, IHC, WB
CD184	CXCR4	3 11073-2-AP	Rabbit Poly	ELISA, IP, WB
CD184	CXCR4	3 60042-1-Ig	Mouse Mono	ELISA, FC, WB
CD192	CCR2-specific	16153-1-AP	Rabbit Poly	ELISA, FC, IHC, WB
CD195	CCR5	1 17476-1-AP	Rabbit Poly	ELISA, FC, WB
CD197	CCR7	55425-1-AP	Rabbit Poly	ELISA, FC, IHC
CD1a	CD1A	17325-1-AP	Rabbit Poly	ELISA, WB
CD1a	CD1A	60173-1-Ig	Mouse Mono	ELISA, WB
CD2	CD2	10299-1-AP	Rabbit Poly	ELISA, FC, IHC, WB
CD2	CD2	60005-2-Ig	Mouse Mono	ELISA, IHC, WB
CD20	CD20	60271-1-Ig	Mouse Mono	ELISA, FC, IHC, WB
CD201	EPCR	1 11391-1-AP	Rabbit Poly	ELISA, IHC, WB
CD202b	Tie2	19157-1-AP	Rabbit Poly	ELISA, IP, WB
CD206	CD206	4 18704-1-AP	Rabbit Poly	ELISA, FC, IHC, WB
CD207	Langerin	11841-1-AP	Rabbit Poly	ELISA, WB
CD208	LAMP3	2 12632-1-AP	Rabbit Poly	ELISA, IF, IHC, IP, WB
CD210a	IL10RA	13356-1-AP	Rabbit Poly	ELISA, FC, WB
CD210b	IL10RB	15102-1-AP	Rabbit Poly	ELISA, WB
CD210b	IL10RB	19387-1-AP	Rabbit Poly	ELISA, WB
CD212	IL12RB1	1 13287-1-AP	Rabbit Poly	ELISA, IF, IP, WB

00 This number shows the amount of times our antibody has been cited in a publication.

CD213a2  
→ CD292

More validation images available on our website. 

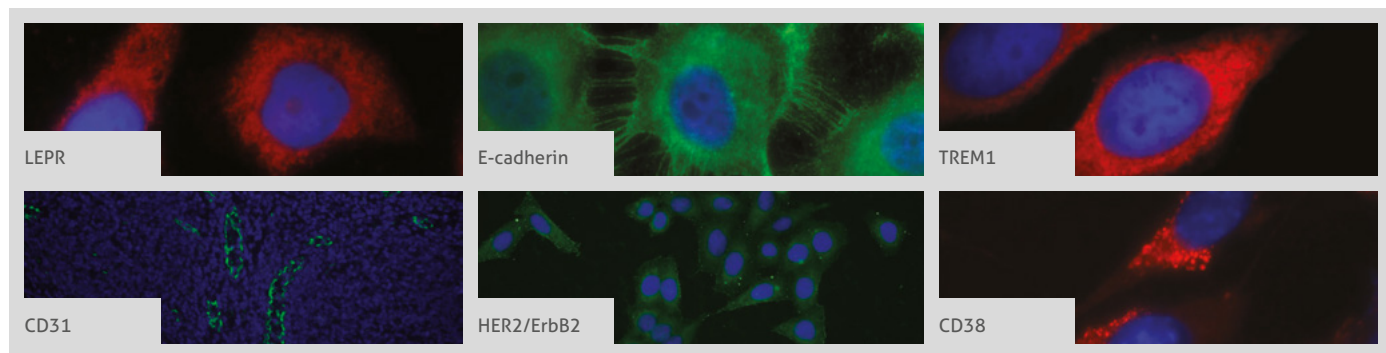


CD No.	Antibody Name	Cat. No.	Type	Applications	CD No.	Antibody Name	Cat. No.	Type	Applications
CD213a2	IL13RA2	 11059-1-AP	Rabbit Poly	ELISA, IF, IHC, WB	CD248	TEM1	  18160-1-AP	Rabbit Poly	ELISA, FC, IF, IHC, WB
CD215	IL15RA	  16744-1-AP	Rabbit Poly	ELISA, IHC, WB	CD249	ENPEP	17655-1-AP	Rabbit Poly	ELISA, FC, IF
CD22	CD22	66103-1-Ig	Mouse Mono	ELISA, IHC, WB	CD253	TRAIL	 17235-1-AP	Rabbit Poly	ELISA, IF, IP, WB
CD220	INSR	20433-1-AP	Rabbit Poly	ELISA, IP, WB	CD254	RANKL	  23408-1-AP	Rabbit Poly	ELISA, IHC, IP, WB
CD221	IGF1R-Specific	 20254-1-AP	Rabbit Poly	ELISA, IHC, IP, WB	CD255	TNFSF12	12537-1-AP	Rabbit Poly	Not Tested
CD222	IGF2R-Specific	20253-1-AP	Rabbit Poly	ELISA, FC, IF, IHC, IP, WB	CD256	TNFSF13	 10680-1-AP	Rabbit Poly	CoIP, ELISA, IF, WB
CD223	LAG-3	16616-1-AP	Rabbit Poly	ELISA, IP, WB	CD257	TNFSF13B	11862-1-AP	Rabbit Poly	ELISA, WB
CD225	IFITM1	 11727-3-AP	Rabbit Poly	ELISA, FC, IF, IHC, IP, WB	CD258	TNFSF14	14194-1-AP	Rabbit Poly	Not Tested
CD225	IFITM1-Specific	 60074-1-Ig	Mouse Mono	ELISA, FC, IF, IHC, IP, WB	CD26	DPP4	 10940-1-AP	Rabbit Poly	ELISA, IF, IHC, WB
CD226	CD226	17842-1-AP	Rabbit Poly	ELISA, IHC	CD261	DR4	 24063-1-AP	Rabbit Poly	ELISA, WB
CD227	MUC1	 19976-1-AP	Rabbit Poly	ELISA, FC, IHC, IP, WB	CD262	DR5-Specific	15497-1-AP	Rabbit Poly	ELISA, WB
CD227	MUC1	23614-1-AP	Rabbit Poly	ELISA, FC, IHC, WB	CD264	DcR2	 16781-1-AP	Rabbit Poly	ELISA, IHC, WB
CD228	MFI2	10428-1-AP	Rabbit Poly	ELISA, WB	CD267	TNFRSF13B	21520-1-AP	Rabbit Poly	ELISA, WB
CD23	CD23	 18642-1-AP	Rabbit Poly	ELISA, FC, IHC, WB	CD27	CD27	11121-1-AP	Rabbit Poly	ELISA, FC, WB
CD23	CD23	60208-1-Ig	Mouse Mono	ELISA, IHC, WB	CD271	p75NTR	 55014-1-AP	Rabbit Poly	ELISA, FC, IF, IHC, IP, WB
CD23	CD23	60208-2-Ig	Mouse Mono	ELISA, IHC, WB	CD274	PD-L1/CD274	 17952-1-AP	Rabbit Poly	ELISA, IF, IHC, IP, WB
CD230	PrP	12555-1-AP	Rabbit Poly	ELISA, FC, IHC, IP, WB	CD275	ICOSLG	14922-1-AP	Rabbit Poly	ELISA, WB
CD231	TSPAN7	18695-1-AP	Rabbit Poly	ELISA, IHC, IP, WB	CD276	CD276	14453-1-AP	Rabbit Poly	ELISA, FC, IHC, WB
CD233	band 3	 18566-1-AP	Rabbit Poly	ELISA, IHC, IP, WB	CD278	ICOS	13338-1-AP	Rabbit Poly	ELISA, WB
CD234	DARC	55185-1-AP	Rabbit Poly	ELISA, IHC, WB	CD279	PD-1/CD279	 18106-1-AP	Rabbit Poly	ELISA, FC, IF, IHC, WB
CD235a	Glycophorin A	15874-1-AP	Rabbit Poly	ELISA, FC, IHC, WB	CD283	TLR3	17766-1-AP	Rabbit Poly	ELISA, FC, IHC
CD24	CD24	 18330-1-AP	Rabbit Poly	ELISA, WB	CD284	TLR4	 19811-1-AP	Rabbit Poly	ELISA, IHC, WB
CD24	CD24	10600-1-AP	Rabbit Poly	ELISA, IHC, WB	CD286	TLR6	 22240-1-AP	Rabbit Poly	ELISA, WB
CD244	CD244	16677-1-AP	Rabbit Poly	ELISA, IHC	CD29	Integrin beta-1	 12594-1-AP	Rabbit Poly	ELISA, WB
CD247	CD247	 12837-2-AP	Rabbit Poly	ELISA, FC, IHC, IP, WB	CD292	BMPRI1A	 12702-1-AP	Rabbit Poly	ELISA, IF, IP, WB

 This number shows the amount of times our antibody has been cited in a publication.



More validation images available on our website.



CD No.	Antibody Name	Cat. No.	Type	Applications
CD295	LEPR	20966-1-AP	Rabbit Poly	ELISA, FC, IF, IHC, IP, WB
CD298	ATP1B3	11142-1-AP	Rabbit Poly	ELISA, IHC, WB
CD299	CLEC4M	22003-1-AP	Rabbit Poly	ELISA, IHC, WB
CD301	CLEC10A/CD301	13590-1-AP	Rabbit Poly	ELISA, WB
CD303	CLEC4C	17941-1-AP	Rabbit Poly	Not Tested
CD304	Neuropilin 1	60067-1-Ig	Mouse Mono	ELISA, IF, IHC, WB
CD31	CD31	11265-1-AP	Rabbit Poly	ELISA, FC, IF, IHC, IP, WB
CD31	CD31	66065-1-Ig	Mouse Mono	ELISA, IF, IHC, WB
CD316	IGSF8	14387-1-AP	Rabbit Poly	ELISA, IP, WB
CD317	BST2	13560-1-AP	Rabbit Poly	ELISA, FC, IF, IHC, WB
CD318	CDCP1	12754-1-AP	Rabbit Poly	ELISA, FC, WB
CD319	SLAMF7	12905-1-AP	Rabbit Poly	ELISA, WB
CD320	CD320	10343-1-AP	Rabbit Poly	ELISA, FC, IHC, WB
CD322	JAM2	12972-1-AP	Rabbit Poly	ELISA, WB
CD324	E-cadherin	20874-1-AP	Rabbit Poly	ELISA, FC, IF, IHC, IP, WB
CD325	N-cadherin	13769-1-AP	Rabbit Poly	ELISA, IF, IHC, WB
CD325	N-cadherin	22018-1-AP	Rabbit Poly	ELISA, FC, IHC, IP, WB
CD326	EPCAM	21050-1-AP	Rabbit Poly	ELISA, FC, IF, IHC, WB
CD327	SIGLEC6	13454-1-AP	Rabbit Poly	ELISA, IHC, WB
CD328	SIGLEC7	13939-1-AP	Rabbit Poly	ELISA, FC, IHC, WB
CD329	SIGLEC9	13377-1-AP	Rabbit Poly	ELISA, IHC, WB
CD32a	CD32	15625-1-AP	Rabbit Poly	ELISA, FC, WB
CD33	CD33	17425-1-AP	Rabbit Poly	ELISA, FC, IF, IHC, WB
CD332	FGFR2	13042-1-AP	Rabbit Poly	ELISA, IF, IHC, WB
CD334	FGFR4	11098-1-AP	Rabbit Poly	ELISA, IF, IHC, WB

CD No.	Antibody Name	Cat. No.	Type	Applications
CD336	CD336	55118-1-AP	Rabbit Poly	ELISA, WB
CD338	BCRP/ABCG2	10051-1-AP	Rabbit Poly	ELISA, IHC, WB
CD34	CD34	14486-1-AP	Rabbit Poly	ELISA, IF, IHC, WB
CD340	HER2/ErbB2	18299-1-AP	Rabbit Poly	ELISA, FC, IHC, IP, WB
CD340	HER2/ErbB2	51105-1-AP	Rabbit Poly	ELISA, IF, IHC, WB
CD349	Frizzled 9	13865-1-AP	Rabbit Poly	ELISA, WB
CD350	Frizzled 10	18175-1-AP	Rabbit Poly	ELISA, IHC, WB
CD354	TREM1	11791-1-AP	Rabbit Poly	ELISA, FC, IF, WB
CD36	CD36	18836-1-AP	Rabbit Poly	ELISA, FC, IF, IHC, WB
CD360	IL21R	10533-1-AP	Rabbit Poly	ELISA, FC, IHC, IP, WB
CD363	S1PR1/EDG1	55133-1-AP	Rabbit Poly	ELISA, IHC, IP, WB
CD37	CD37	21044-1-AP	Rabbit Poly	ELISA, IHC, WB
CD38	CD38	60006-1-Ig	Mouse Mono	ELISA, IF, WB
CD39	CD39	19229-1-AP	Rabbit Poly	ELISA, FC, IHC, IP, WB
CD3d	CD3 delta	16669-1-AP	Rabbit Poly	ELISA, FC, IHC, IP, WB
CD3d	CD3 delta	60194-1-Ig	Mouse Mono	ELISA, WB
CD3e	CD3 epsilon	17617-1-AP	Rabbit Poly	ELISA, FC, IF, IHC, IP, WB
CD3e	CD3 epsilon	60181-1-Ig	Mouse Mono	ELISA, FC, IHC, WB
CD3g	CD3 gamma	21120-1-AP	Rabbit Poly	ELISA, FC, IHC, IP, WB
CD4	CD4	11056-2-AP	Rabbit Poly	ELISA, IHC, IP, WB
CD4	CD4	19068-1-AP	Rabbit Poly	ELISA, IP, WB
CD42a	GP9	14564-1-AP	Rabbit Poly	ELISA, IHC, WB
CD42b	CD42b	12860-1-AP	Rabbit Poly	ELISA, IHC, WB
CD43	CD43	13959-1-AP	Rabbit Poly	ELISA, IHC, WB
CD44	CD44	15675-1-AP	Rabbit Poly	ELISA, FC, IF, IHC, IP, WB

00 This number shows the amount of times our antibody has been cited in a publication.

**CD44**  
 → CDw92

CD No.	Antibody Name	Cat. No.	Type	Applications
CD44	CD44	1 60224-1-Ig	Mouse Mono	ELISA, FC, IF, IHC, WB
CD45	CD45	2 20103-1-AP	Rabbit Poly	ELISA, FC, IHC, IP, Polymer Detection Kit, WB
CD46	CD46	1 12494-1-AP	Rabbit Poly	ELISA, FC, IHC, IP, WB
CD47	CD47	20305-1-AP	Rabbit Poly	ELISA, IHC, WB
CD49c	Integrin alpha-3	1 66070-1-Ig	Mouse Mono	ELISA, FC, IF, WB
CD49c	Integrin alpha-3	21992-1-AP	Rabbit Poly	ELISA, FC, IF, IP, WB
CD49d	Integrin alpha-4	1 19676-1-AP	Rabbit Poly	ELISA, IHC, WB
CD49e	Integrin alpha-5	4 10569-1-AP	Rabbit Poly	ELISA, IF, WB
CD49f	Integrin alpha 6X1A-Specific	20231-1-AP	Rabbit Poly	ELISA, WB
CD49f	Integrin alpha 6X1B-Specific	1 20232-1-AP	Rabbit Poly	ELISA, WB
CD5	CD5	17227-1-AP	Rabbit Poly	ELISA, IHC, IP, WB
CD50	ICAM3	17699-1-AP	Rabbit Poly	ELISA, FC, IHC, WB
CD51	Integrin beta-3	3 18309-1-AP	Rabbit Poly	ELISA, IHC, WB
CD54	ICAM-1	13 10831-1-AP	Rabbit Poly	ELISA, FC, IHC, IP, WB
CD55	ICAM-1	1 15364-1-AP	Rabbit Poly	ELISA, FC, IHC, IP, WB
CD56	NCAM1/CD56	5 14255-1-AP	Rabbit Poly	ELISA, FC, IF, IHC, WB
CD56	Icam-1	16174-1-AP	Rabbit Poly	ELISA, IF, IHC, IP, WB
CD56	NCAM1/CD56	60238-1-Ig	Mouse Mono	ELISA, IHC, WB
CD58	CD58	10878-1-AP	Rabbit Poly	ELISA, WB
CD58	Icam1	15 10020-1-AP	Rabbit Poly	ELISA, FC, IF, IHC, WB
CD59	CD59	1 10742-1-AP	Rabbit Poly	ELISA, FC, IF, IHC, WB
CD61	Integrin beta-3	3 18309-1-AP	Rabbit Poly	ELISA, IHC, WB
CD62E	E-selectin/CD62E	2 20894-1-AP	Rabbit Poly	ELISA, FC, WB
CD62P	P-selectin	13304-1-AP	Rabbit Poly	ELISA, IHC
CD66d	CEACAM3-Specific	19496-1-AP	Rabbit Poly	ELISA, FC, IHC
CD66e	CEA	1 10421-1-AP	Rabbit Poly	ELISA, IHC
CD66f	PSG1	1 11809-1-AP	Rabbit Poly	ELISA, IF, IHC, WB
CD69	CD69	10803-1-AP	Rabbit Poly	ELISA, IHC, WB
CD7	CD7	11320-1-AP	Rabbit Poly	ELISA, IHC
CD7	CD7	60209-2-Ig	Mouse Mono	ELISA, IHC, WB
CD71	Transferrin receptor/CD71	7 10084-2-AP	Rabbit Poly	ELISA, IF, IHC, IP, WB

CD No.	Antibody Name	Cat. No.	Type	Applications
CD72	CD72	13469-1-AP	Rabbit Poly	ELISA, WB
CD73	NT5E/CD73	12231-1-AP	Rabbit Poly	ELISA, FC, IHC, WB
CD75	ST6GAL1	14355-1-AP	Rabbit Poly	ELISA, IHC, IP, WB
CD79a	CD79A	22349-1-AP	Rabbit Poly	ELISA, IHC, WB
CD80	CD80	14292-1-AP	Rabbit Poly	ELISA, FC, WB
CD81	CD81	2 18250-1-AP	Rabbit Poly	ELISA, FC, IHC
CD82	CD82	10248-1-AP	Rabbit Poly	ELISA, IHC, WB
CD84	CD84	1 12566-1-AP	Rabbit Poly	ELISA, WB
CD85C	LILRB5	12881-1-AP	Rabbit Poly	ELISA, WB
CD85F	LILRA5	18821-1-AP	Rabbit Poly	ELISA, FC, WB
CD85G	LILRA4	21153-1-AP	Rabbit Poly	ELISA, WB
CD85H	LILRA2	11461-1-AP	Rabbit Poly	ELISA, IHC, WB
CD86	CD86	13395-1-AP	Rabbit Poly	ELISA, FC, IHC, WB
CD87	uPAR	2 10286-1-AP	Rabbit Poly	ELISA, FC, IF, FC, IP, WB
CD88	C5AR1	2 21316-1-AP	Rabbit Poly	ELISA, FC, IF, IHC, IP, WB
CD89	CD89	13245-1-AP	Rabbit Poly	ELISA, WB
CD8b	CD8B	21256-1-AP	Rabbit Poly	ELISA, WB
CD9	CD9	1 20597-1-AP	Rabbit Poly	ELISA, FC, IHC, WB
CD9	CD9	60232-1-Ig	Mouse Mono	ELISA, IHC, WB
CD94	CD94	13332-1-AP	Rabbit Poly	ELISA, IHC, WB
CD95	FAS/CD95	17 13098-1-AP	Rabbit Poly	ELISA, FC, IF, IHC, IP, WB
CD95	FAS/CD95	60196-1-Ig	Mouse Mono	ELISA, FC, IHC, WB
CD97	CD97	13071-1-AP	Rabbit Poly	ELISA, FC, IHC, WB
CD98	CD98	3 15193-1-AP	Rabbit Poly	ELISA, FC, IF, IHC, IP, WB
CD99	CD99	1 23079-1-AP	Rabbit Poly	ELISA, FC, IHC, WB
CDw92	SLC44A1	14687-1-AP	Rabbit Poly	ELISA, WB

# THE BENCHMARK IN VALIDATION

Proteintech take complete responsibility for every product they manufacture and ensure that it will work in your hands with an extensive validation process.

Here's what you can expect:

- **Every antibody has been extensively validated by the in-house team in a wide range of applications.**
- **Antibodies now tested in siRNA knockdown to demonstrate specificity.**
- **Original validation data available to researcher on request.**
- **Multi-lingual technical support available online and by email.**

---

[www.ptglab.com](http://www.ptglab.com)



# CONTACT US

## Proteintech Group *US Head Office*

**PHONE** 1 (888) 4PTGLAB  
(1-888-478-4522)  
(toll free in USA),  
or 1(312) 455-8498  
(outside USA)

**FAX** 1 (312) 455-8408

**ADDRESS** Proteintech Group, Inc.  
5400 Pearl Street, Suite 300,  
Rosemont, IL 60018, USA

**EMAIL** proteintech@ptglab.com

## Proteintech Europe *United Kingdom*

**PHONE** +44 (161) 8393007

**FAX** +44 (161) 2413103

**ADDRESS** Proteintech Europe, Ltd.  
4th Floor,  
196 Deansgate,  
Manchester, M3 3WF

**EMAIL** europe@ptglab.com

## Proteintech Europe *Germany*

**EMAIL** germany@ptglab.com  
**Sales and technical support only.**

## Proteintech *China Office*

**PHONE** 027-87531629  
or 4006-900-926

**FAX** 027-87531627

**ADDRESS** Wuhan Sanying Biotechnologies  
D3-3, No.666 Gaoxin Avenue,  
Wuhan East Lake Hi-tech Development Zone  
Wuhan, Hubei, P.R.C

**EMAIL** service@ptglab.com

## Support

Available 24 hours via Live Chat and 9-5 (CDT) via phone.

Email support also available.

**LIVE CHAT**  
[www.ptglab.com](http://www.ptglab.com)

**TWITTER**  
[@proteintech](https://twitter.com/proteintech)

**BLOG**  
[www.ptglab.com/news/blog](http://www.ptglab.com/news/blog)

**YOUTUBE**  
[www.youtube.com/Proteintech](http://www.youtube.com/Proteintech)



We are ISO 9001 and ISO 13485 accredited.