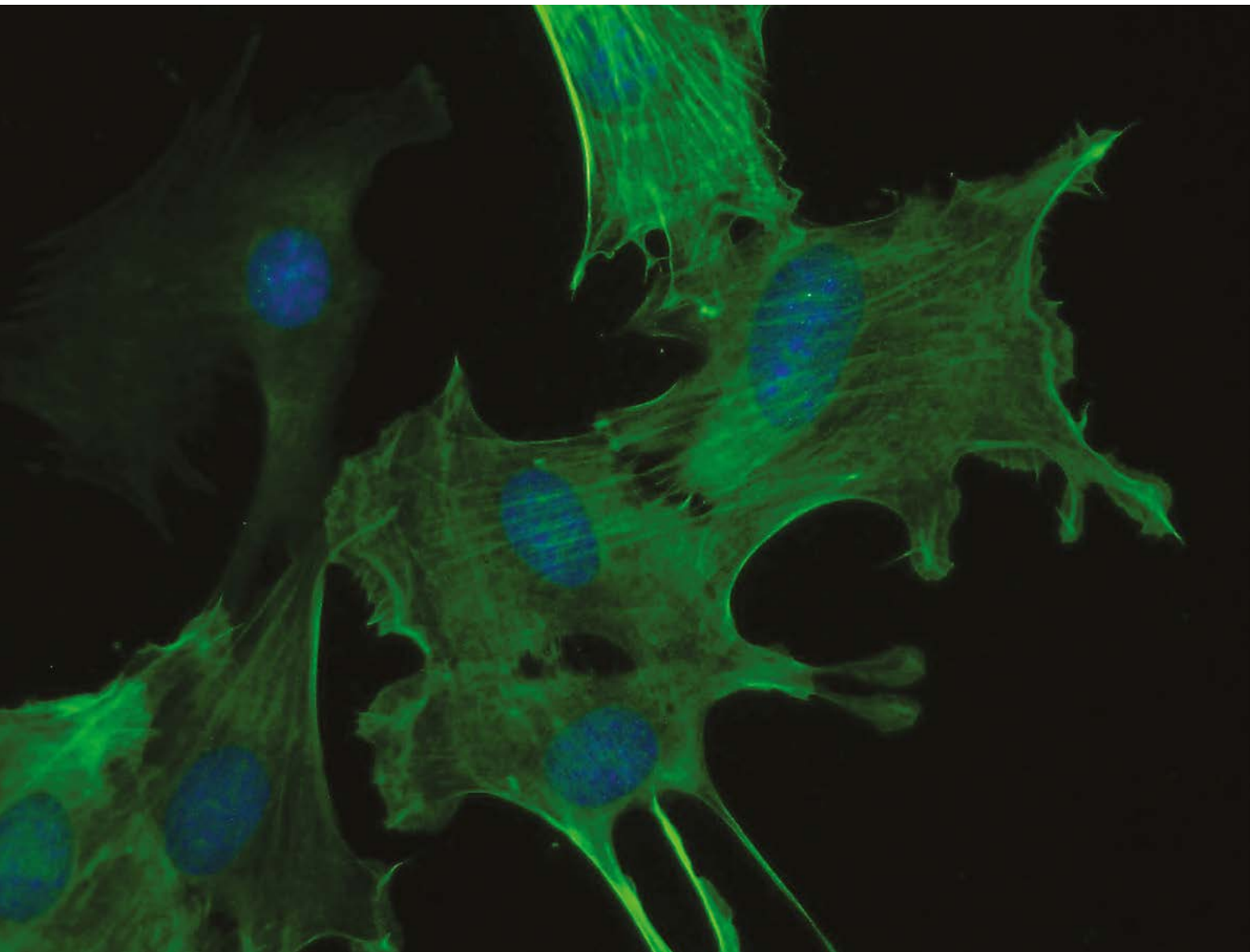


ANTIBODIES FOR NEUROSCIENCE

www.ptglab.com



Front Cover:

Immunofluorescent analysis of (-20°C Ethanol) fixed C2C12 cell using ACTA2 antibody (14395-1-AP) at a dilution of 1:50 and Alexa Fluor 488-conjugated AffiniPure Goat Anti-Rabbit IgG(H+L).

WELCOME

Original Manufacturer Original Products

Part of Proteintech®'s early vision was to make all its own products, to the highest standards possible, thus assuming ultimate responsibility for their quality. In addition to its founders' refusal to source a single antibody from any other provider, they also refused to supply any other provider. When you receive your antibody and see the Proteintech® logo on the vial, know that you hold something that is truly unique.

As an original manufacturer, Proteintech® can offer you:

- 100% original products; each product is unique and can only be bought directly or through approved distributors.
- Antibodies now tested in siRNA-treated samples to demonstrate antibody specificity.
- Guaranteed to work in any species and any applications, or get your money back.

siRNA Validation

Recently, Proteintech® has pledged to undertake siRNA knockdown validation of most of its antibodies by the end of 2015. The specificities of over 550 of its antibodies have already been confirmed by customers using siRNA knockdown, and published in over 650 journal papers. In adding its own siRNA data to those previously available in the literature, Proteintech's aim is to make a gold standard of antibody validation more accessible to its customers.

- Help set a new benchmark of antibody validation.
- Improve on industry standards.
- Demonstrate product specificity.
- Strengthen existing validation procedures.

What's Inside

4	Focus Article Dach1: A Marker Of Neural Rosette Cells
5	Focus Article What Can We Learn By Studying ALS In A Dish?
6-19	Antibodies: 14-3-3 → Oligophrenin 1
20	Focus Article Alzheimer's Disease Prevention
21	Alzheimer's Disease Signaling Pathway
22-33	Antibodies: OPA3 → β-ENaC
34	Contact Us

FOCUS ARTICLES

DACH 1: A Marker Of Neural Rosette Cells

By Ashley Juavinett

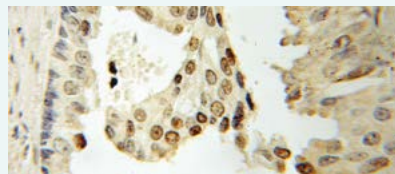
The brain is composed of hundreds, perhaps thousands of different types of neurons that can be differentiated based on their shape, genetics, electrophysiology, or their location. While we can now transform stem cells into neurons in a dish, the next question is: which types of neurons can we generate? Many researchers are using stem cells to model motor disorders such as ALS, but it has proven difficult to transform these cells into the various neuron types that are involved in neurological disorders. Furthermore, stable cell cultures are needed to interrogate the molecular bases of such disorders. Several labs have addressed these questions and more, all with a little bit of help from a special type of neuroprogenitor stem cell and Proteintech®'s Dach1 antibody (10914-1-AP).

During development, neurons depend on internal and external clues to decide their cell fates. As this complex process is underway, they arrange in various shapes and orientations that will ultimately give rise to the complex mature brain structure. Even when neuroprogenitors are developed from human embryonic stem cells (hESCs) in a dish, they arrange in a structure known as a "neural rosette," a beautiful radial arrangement of cells that remarkably resembles – in structure and genetics – the developing neural tube of the brain.¹ Responsible for producing the neurons

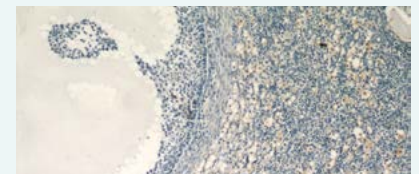
and glia that populate our nervous systems, these rosette cells have a broad capability to differentiate and are therefore prime candidates for developing new technologies to purposefully generate different types of neurons.

Recently, a group of researchers in New York showed that they could reliably isolate and maintain these rosettes from hESCs in order to study their molecular and genetic properties.¹ Among a host of genes, they found that the rosettes had an increase in Dach1, a known developmental transcription factor that has been implicated in cancer research (see Proteintech®'s anti-DACH1 staining prostate cancer tissue in the accompanying image). The authors note that Dach1 participates in a known pathway where it represses another growth factor – TGF-β – suggesting that repression of the TGF-β pathway may be necessary for rosette maintenance. As an extension of this work, the Brüstle lab from Bonn, Germany showed that they could generate rosette-type cells that lasted longer and were self-renewing.² As confirmation that they had isolated rosette-type cells, they showed that their rosettes expressed Dach1.

With the Dach1 antibody to help along the way, such studies have advanced rosette-type stem cells as a model for developmental neuroscience.



Immunohistochemical staining of paraffin-embedded human prostate cancer using Proteintech's anti-DACH1 antibody (10914-1-AP) at dilution of 1:50 (10x objective).



Immunohistochemistry of paraffin-embedded human ovary tissue slide using TGFβ1 Antibody (18978-1-AP) at dilution of 1:50 (10x objective).

Related Antibodies

Antibody Name	Catalog Number	Type	Applications
DACH1	26 10914-1-AP	Rabbit Poly	ChIP, ELISA, IF, IHC, IP, WB
TGFβ1	25 18978-1-AP	Rabbit Poly	ELISA, IF, IHC, WB

00 This number shows the amount of times our antibody has been cited in a publication.

References

- Elkabetz et al., Genes Dev. 2008, Jan 15;22 (2):152-65.
- Koch et al., PNAS USA. 2009 Mar 3;106 (9):3225-30.

What Can We Learn By Studying ALS In A Dish?

By Ashley Juavinett

We typically think of disease as a systemic problem – for example, a person with amyotrophic lateral sclerosis (ALS, or Lou Gehrig’s disease) gradually loses the ability to move, indicating an underlying issue with motor systems. More recently, we have begun to consider diseases in a genetic light, noting that diseases often have corresponding genetic abnormalities such as mutations in SOD1, C9ORF72, TDP-43, or FUS.

Now, with the nascent ability to model diseases in a dish using cultured human neurons, we can also begin to examine diseases in terms of their cell-specific effects: what happens to a particular type of neuron when its host organism is affected by a debilitating disease such as ALS?

Back in 2006, a group from Japan showed that you could take human skin cells and “de-differentiate” them; in other words, turn them back into stem cells, wiping the slate blank for their function (Takahashi & Yamanaka, 2006). You can then take these induced pluripotent stem (iPS) cells as they are now known, and program them into neurons by allowing them to grow in a dish in the presence of certain growth factors. Although these cells started life differently, they have the same genome as regular neurons, giving us a unique look at the downstream cellular effects of certain genes.

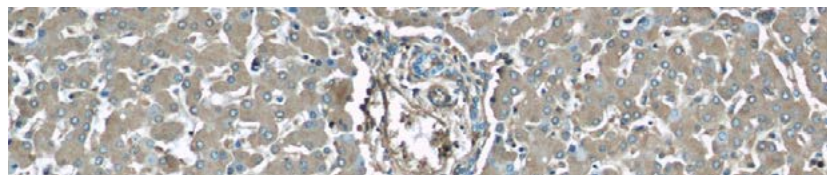
Fred Gage and colleagues have already had success with modeling schizophrenia in this way. By comparing neurons from schizophrenic patients and healthy controls, they discovered that the schizophrenic neurons had less synapses with different genetic markers, and that the antipsychotic loxapine reversed these abnormalities (Brennand et al., 2011). The hope is that similar types of observations could be made with motor neuron diseases such as ALS, to potentially move us closer to better treatments for this presently incurable disease (Winner et al., 2014).

To study ALS, scientists transformed iPS cells into a particular type of cell involved in helping us do almost everything related to voluntary as well as involuntary movement: a motor neuron. ALS is marked by progressive loss of these neurons in the cortex, brainstem, and spinal cord, ultimately causing the patient to completely lose the ability to move. Motor neurons that are derived from patients with ALS have the same genetic make-up from their host patient, allowing scientists to study

particular genes associated with the disorder (Gage, 2010). In 2011, a group of scientists in La Jolla, California did just the above. They focused on an autosomal dominant form of familial ALS called ALS8, affecting about 10% of people with ALS. First mapped in a Brazilian family, and later in patients with German and Japanese ancestry, ALS8 is caused by a mutation in the VAPB gene. Using iPSCs from ALS8 patients and their non-carrier siblings, they showed that there was indeed a decrease in VAPB proteins in ALS8-derived neurons, supporting previous observations from the sporadic form of ALS (Mitne-Neto et al., 2011).

In March 2014, an international team of scientists published a study about iPS cells derived from an ALS patient with a specific TDP-43 mutation known as M337V. TDP-43 is a DNA/RNA binding protein that is normally found in the nucleus, but has an abnormal pathology in diseases such as ALS and frontotemporal lobar degeneration. Consistent with previous observations, the researchers found that the patient’s cells had increased cytosolic levels of TDP-43. In addition to this proof of concept for using iPS cells, they found something quite groundbreaking: they could transfect these cells with an allele-specific small-interference RNA (siRNA) to effectively reduce levels of TDP-43 (Nishimura et al., 2014). This provides some preliminary evidence that RNA interference may be useful for developing ALS therapeutics.


Of course, studying diseases in a dish cannot tell us everything we need to know, and is still several steps away from bedside therapies. But as iPS cell technology continues to improve and integrate with other technologies such as RNA interference, there are many avenues of research that may ultimately prove very beneficial to developing treatments for ALS as well as other motor neuron disorders. In the words of Tom Insel, NIMH director, “From astronomy to microbiology, new technology has often been the portal to new understanding.”



Immunohistochemical of paraffin-embedded human liver using Alpha-1-Antitrypsin antibody (16382-1-AP) at dilution of 1:50 (10x objective).

14-3-3
→ alpha Tubulin

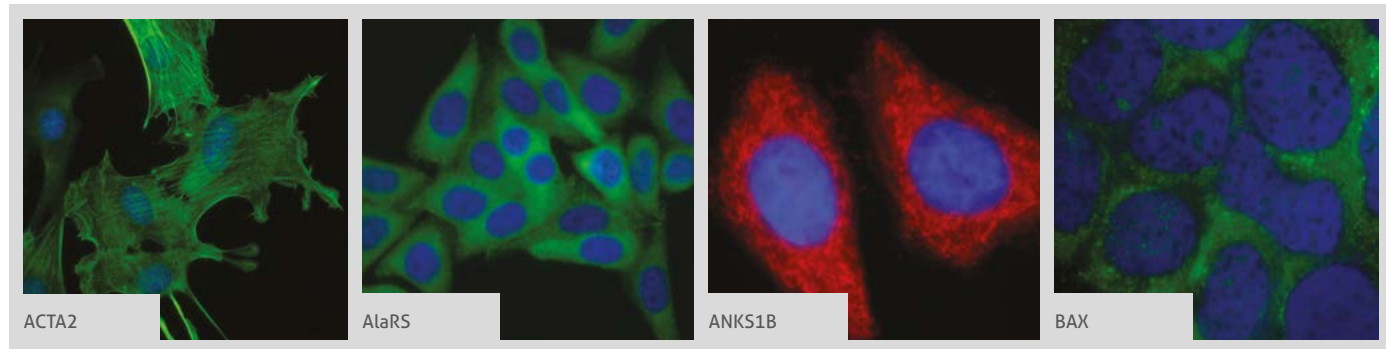
ANTIBODY PRODUCT LIST

Antibody Name	Cat. No.	Type	Applications
14-3-3	14503-1-AP	Rabbit Poly	ELISA, FC, IF, IHC, IP, WB
14-3-3	66061-1-Ig	Mouse Mono	ELISA, FC, IF, IHC, WB
14-3-3 epsilon	11648-2-AP	Rabbit Poly	ELISA, FC, IF, IHC, IP, WB
14-3-3 GAMMA-Specific	12381-1-AP	Rabbit Poly	ELISA, IF, IHC, IP, WB
ABAT	11349-1-AP	Rabbit Poly	ELISA, IHC, IP, WB
ABCA2	20681-1-AP	Rabbit Poly	ELISA, IF, WB
ABCB7	11158-1-AP	Rabbit Poly	ELISA, IP, WB
ABCG4	14269-1-AP	Rabbit Poly	ELISA, IHC, WB
Acetylated tubulin (Lys40)	4 66200-1-Ig	Mouse Mono	ELISA, IF, IHC, WB
ACHE	17975-1-AP	Rabbit Poly	ELISA, IHC, WB
ACTA1-Specific	17521-1-AP	Rabbit Poly	ELISA, IHC, WB
ACTA2 	51 14395-1-AP	Rabbit Poly	ELISA, FC, IF, IHC, IP, WB
ACTA2	5 23081-1-AP	Rabbit Poly	ELISA, IHC, IP, WB
ACTN2	14221-1-AP	Rabbit Poly	ELISA, IF, IHC, IP, WB
ADAM17	24620-1-AP	Rabbit Poly	ELISA, IHC, WB
ADAM17-Specific	20259-1-AP	Rabbit Poly	ELISA, IHC, WB
ADAM8	23778-1-AP	Rabbit Poly	ELISA, IHC, WB
ADAP1	13911-1-AP	Rabbit Poly	ELISA, IF, IHC, WB
ADAR1	14330-1-AP	Rabbit Poly	ELISA, IF, IHC, IP, WB
ADARB1	22248-1-AP	Rabbit Poly	ELISA, IP, WB
ADCY3	19492-1-AP	Rabbit Poly	ELISA, IF, IHC, IP, WB
Adenosine A1 Receptor	20332-1-AP	Rabbit Poly	ELISA, FC, IHC, WB
Adenosine A1 Receptor	55026-1-AP	Rabbit Poly	ELISA, IHC, WB
ADH1B	17165-1-AP	Rabbit Poly	ELISA, WB

Antibody Name	Cat. No.	Type	Applications
ADNP	17987-1-AP	Rabbit Poly	ELISA, IF, WB
ADRA1A-Specific	19777-1-AP	Rabbit Poly	ELISA, FC, WB
ADRA1B	22419-1-AP	Rabbit Poly	ELISA, FC, WB
ADRB2	2 13096-1-AP	Rabbit Poly	ELISA, FC, IHC, WB
AFG3L2	14631-1-AP	Rabbit Poly	ELISA, IF, IHC, IP, WB
AIF	7 17984-1-AP	Rabbit Poly	ELISA, IF, IHC, IP, WB
AIP/ARA9	18176-1-AP	Rabbit Poly	ELISA, FC, IHC, WB
AIPL1	15108-1-AP	Rabbit Poly	ELISA, IHC, WB
AKT1	53 10176-2-AP	Rabbit Poly	ELISA, FC, IF, IHC, IP, WB
AKT1	51077-1-AP	Rabbit Poly	ELISA, IF, IHC, WB
AKT1	60203-1-Ig	Mouse Mono	ELISA, FC, IF, IHC, IP, WB
AKT1	60203-2-Ig	Mouse Mono	ELISA, IF, IHC, IP, WB
ALADIN	15127-1-AP	Rabbit Poly	ELISA, IF, IHC, WB
AlaRS 	17394-1-AP	Rabbit Poly	ELISA, IF, IHC, IP, WB
ALDH1A1	11 15910-1-AP	Rabbit Poly	ELISA, IF, IHC, IP, WB
ALDH1A1	22109-1-AP	Rabbit Poly	ELISA, IHC, WB
ALDH1A1	60171-1-Ig	Mouse Mono	ELISA, IF, IHC, WB
ALK, CD246	60321-1-Ig	Mouse Mono	ELISA, IHC, WB
Alpha Actin	6 23660-1-AP	Rabbit Poly	ELISA, IF, IHC, IP, WB
Alpha actin	11032-1-AP	Rabbit Poly	ELISA, IHC, IP, WB
Alpha actin	23082-1-AP	Rabbit Poly	ELISA, IHC, WB
Alpha adducin	10791-1-AP	Rabbit Poly	ELISA, IHC, WB
Alpha B Crystallin	15808-1-AP	Rabbit Poly	ELISA, IHC, IP, WB
Alpha cardiac actin-specific	66125-1-Ig	Mouse Mono	ELISA, IF, IHC, WB
alpha Tubulin	51 11224-1-AP	Rabbit Poly	ELISA, FC, IF, IHC, IP, WB

00 This number shows the amount of times our antibody has been cited in a publication.

More validation images available on our website.



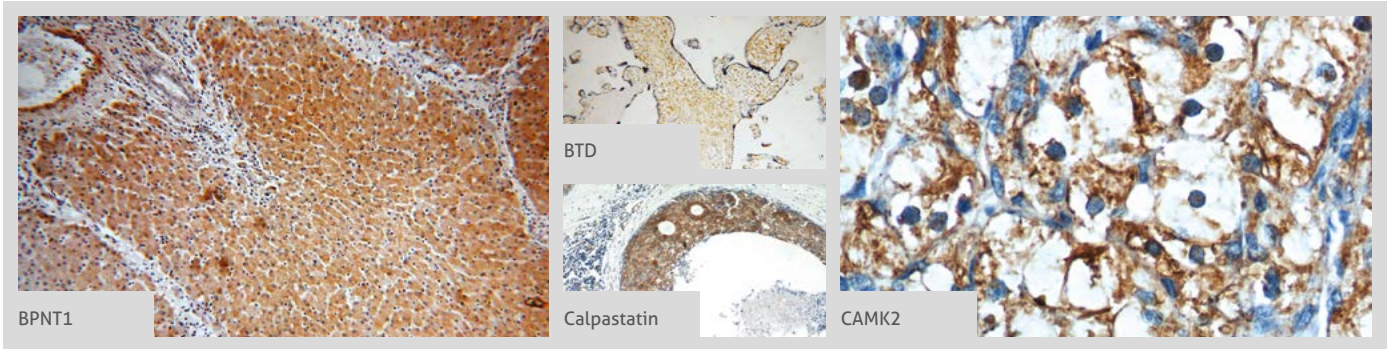
Antibody Name	Cat. No.	Type	Applications
alpha Tubulin	22 66031-1-Ig	Mouse Mono	ELISA, FC, IF, IHC, IP, WB
alpha Tubulin	14555-1-AP	Rabbit Poly	ELISA, IF, IHC, WB
alpha Tubulin	HRP-66031	Mouse Mono	ELISA, WB
Alpha-2-antiplasmin	13228-1-AP	Rabbit Poly	ELISA, IF, WB
Alpha-sarcoglycan	13222-1-AP	Rabbit Poly	ELISA, WB
Alpha-synuclein	6 10842-1-AP	Rabbit Poly	ELISA, IF, IHC, WB
ALS2	13998-1-AP	Rabbit Poly	ELISA, IF, IHC, IP, WB
AMBRA1	13762-1-AP	Rabbit Poly	ELISA, IF, IHC, WB
Amphiphysin	6 13379-1-AP	Rabbit Poly	ELISA, IF, IHC, IP, WB
Amyloid beta (A4) precursor protein	10524-1-AP	Rabbit Poly	ELISA, WB
androgen receptor	22089-1-AP	Rabbit Poly	ELISA, IHC, WB
androgen receptor	22576-1-AP	Rabbit Poly	ELISA, IF, IP, WB
Angiogenin	18302-1-AP	Rabbit Poly	ELISA, IHC, WB
ANKRD2	2 11821-1-AP	Rabbit Poly	ELISA, IHC, IP, WB
ANKS1B	24783-1-AP	Rabbit Poly	ELISA, IF, IHC, IP, WB
ANO10	21901-1-AP	Rabbit Poly	ELISA, IP, WB
APBB2	13177-1-AP	Rabbit Poly	ELISA, IF, WB
APH1A	11643-1-AP	Rabbit Poly	ELISA, WB
APLP2	15041-1-AP	Rabbit Poly	ELISA, IHC, WB
APPL1	2 12639-1-AP	Rabbit Poly	ELISA, IF, IHC, IP, WB
APPL1	19885-1-AP	Rabbit Poly	ELISA, IF, IHC, IP, WB
AQR	24342-1-AP	Rabbit Poly	ELISA, IHC, IP, WB
Aquaporin 4	3 16473-1-AP	Rabbit Poly	ELISA, IF, IHC, IP, WB
ARC/ARG3.1	2 16290-1-AP	Rabbit Poly	ELISA, IF, IHC, IP, WB
ARHGEF4	55213-1-AP	Rabbit Poly	ELISA, IHC, WB
ARHGEF9-Specific	20042-1-AP	Rabbit Poly	ELISA, WB
ARNT2	12810-1-AP	Rabbit Poly	ELISA, IHC, WB
Arrestin C	11100-2-AP	Rabbit Poly	ELISA, IHC, WB
ASF/SF2	2 12929-2-AP	Rabbit Poly	ELISA, IF, IP, WB



Antibody Name	Cat. No.	Type	Applications
ASIC2	17851-1-AP	Rabbit Poly	ELISA, IP, WB
ASIC4	12003-1-AP	Rabbit Poly	ELISA, WB
ASPH	14116-1-AP	Rabbit Poly	ELISA, WB
Ataxin 2	2 21776-1-AP	Rabbit Poly	ELISA, IF, IHC, IP, WB
ATIC	10726-1-AP	Rabbit Poly	ELISA, IF, WB
ATOH1	21215-1-AP	Rabbit Poly	ELISA, IF, WB
ATP1A1	3 14418-1-AP	Rabbit Poly	ELISA, IHC, IP, WB
ATP1A1-Specific	55187-1-AP	Rabbit Poly	ELISA, FC, IF, IHC, WB
ATP1A2	16836-1-AP	Rabbit Poly	ELISA, FC, IF, IHC, WB
ATP1A2-Specific	55179-1-AP	Rabbit Poly	ELISA, IHC, IP, WB
ATX3, ATXN3	3 13505-1-AP	Rabbit Poly	ELISA, IF, IHC, IP, WB
ATXN10	15693-1-AP	Rabbit Poly	ELISA, IF, IHC, IP, WB
AZGP1	66178-1-Ig	Mouse Mono	ELISA, IHC, WB
BAALC	24997-1-AP	Rabbit Poly	ELISA, IF, IHC, IP, WB
BACE1	4 12807-1-AP	Rabbit Poly	ELISA, IHC, IP, WB
BACE2	16321-1-AP	Rabbit Poly	ELISA, WB
BAD	8 10435-1-AP	Rabbit Poly	ELISA, IHC, WB
BAIAP2	11087-2-AP	Rabbit Poly	ELISA, IHC, IP, WB
BAK	23 14673-1-AP	Rabbit Poly	ELISA, IF, IHC, WB
BAX	156 50599-2-Ig	Rabbit Poly	ELISA, FC, IF, IHC, IP, WB
BAX	11 23931-1-AP	Rabbit Poly	ELISA, IHC, WB
BAX	3 60267-1-Ig	Mouse McAb	ELISA, IF, IHC, WB
BBS1	21118-1-AP	Rabbit Poly	ELISA, IF, IP, WB
BBS10	3 12421-2-AP	Rabbit Poly	ELISA, IF, WB
BBS5	11 14569-1-AP	Rabbit Poly	ELISA, IF, IHC, IP, WB
BBS5	66136-1-Ig	Mouse Mono	ELISA, IHC, WB
BBS7	4 18961-1-AP	Rabbit Poly	ELISA, IHC, IP, WB
BBS7	13458-1-AP	Rabbit Poly	ELISA, IF
BBS8	12505-1-AP	Rabbit Poly	ELISA, IP, WB
BBS9	2 14460-1-AP	Rabbit Poly	ELISA, IF, IHC, IP, WB
BCAS2	2 10414-1-AP	Rabbit Poly	ELISA, IF, IHC, IP, WB

00 This number shows the amount of times our antibody has been cited in a publication.

BCL11A
→ CaMKII delta-Specific

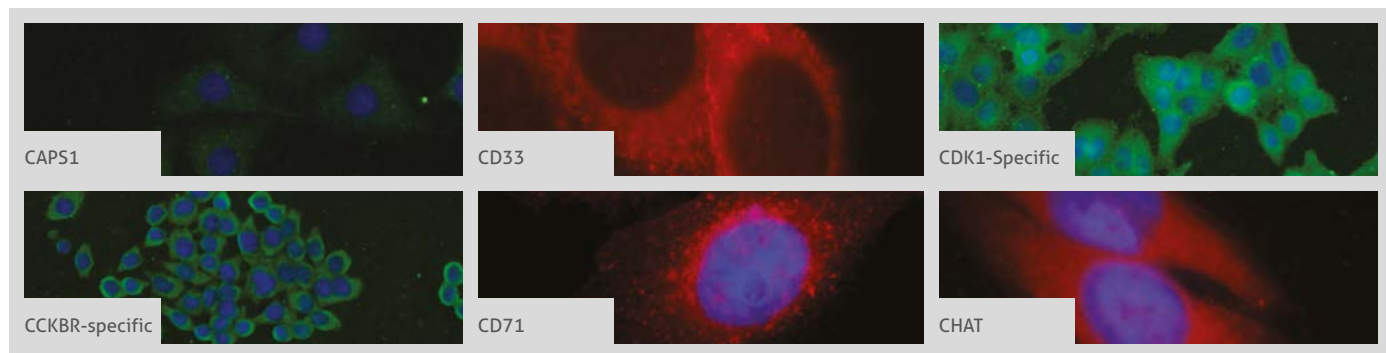
More validation images available on our website. 



Antibody Name	Cat. No.	Type	Applications
BCL11A	11613-1-AP	Rabbit Poly	ELISA, IHC
BCL11B	55414-1-AP	Rabbit Poly	ELISA, IF, IP, WB
BCL2	161 12789-1-AP	Rabbit Poly	ELISA, FC, IF, IHC, IP, WB
BCL2	5 60178-1-Ig	Mouse Mono	ELISA, FC, IHC, IP, WB
BCMO1	23308-1-AP	Rabbit Poly	ELISA, IHC, WB
BCO2	3 14324-1-AP	Rabbit Poly	ELISA, IF, IHC, WB
BCRP/ABCG2	2 10051-1-AP	Rabbit Poly	ELISA, IHC, WB
Beta Arrestin 1	2 15361-1-AP	Rabbit Poly	ELISA, IF, IHC, IP, WB
Beta Arrestin 2	2 10171-1-AP	Rabbit Poly	ELISA, IF, IHC, IP, WB
Beta sarcoglycan	11936-1-AP	Rabbit Poly	ELISA, WB
Beta Tubulin	22 10094-1-AP	Rabbit Poly	ELISA, FC, IF, IHC, IP, WB
Beta Tubulin	14 10068-1-AP	Rabbit Poly	ELISA, IF, IHC, IP, WB
Beta-Catenin	43 51067-2-AP	Rabbit Poly	ELISA, IF, IHC, IP, WB
BHLHA15	25140-1-AP	Rabbit Poly	ELISA, IP, WB
BHLHE41	12688-1-AP	Rabbit Poly	ELISA, IHC, IP, WB
Bif-1	15422-1-AP	Rabbit Poly	ELISA, IF, IHC, WB
BIN1	2 14647-1-AP	Rabbit Poly	ELISA, IHC, IP, WB
BIN2	14245-1-AP	Rabbit Poly	ELISA, IHC, IP, WB
BIN3	11215-1-AP	Rabbit Poly	ELISA, IHC, IP, WB
BIN3	20186-1-AP	Rabbit Poly	ELISA, WB
BPNT1	 16461-1-AP	Rabbit Poly	ELISA, IF, IHC, WB
Brevican	19017-1-AP	Rabbit Poly	ELISA, WB
BRN2	14596-1-AP	Rabbit Poly	ELISA, IHC, WB
BRN2-Specific	18998-1-AP	Rabbit Poly	ELISA, IHC, WB
BRSK2	2 11589-1-AP	Rabbit Poly	ELISA, IHC, WB
BTD	 16330-1-AP	Rabbit Poly	ELISA, IF, IHC, WB
C1QA	11602-1-AP	Rabbit Poly	ELISA, IP, WB
C1QC	16889-1-AP	Rabbit Poly	ELISA, IHC, WB
C3/C3b/C3c	21337-1-AP	Rabbit Poly	ELISA, IHC, IP, WB
C3/C3b/C3c	66157-1-Ig	Mouse Mono	ELISA, IF, IHC, WB

Antibody Name	Cat. No.	Type	Applications
C9orf72	5 22637-1-AP	Rabbit Poly	ELISA, IF, IHC, IP, WB
C9orf72	66140-1-Ig	Mouse Mono	ELISA, IF, IHC, IP, WB
CA10	12953-1-AP	Rabbit Poly	ELISA, IHC, WB
CA4	13931-1-AP	Rabbit Poly	ELISA, WB
CABC1	15528-1-AP	Rabbit Poly	ELISA, IF, WB
CACNA1B	19681-1-AP	Rabbit Poly	ELISA, IHC, WB
CACNA1G	17821-1-AP	Rabbit Poly	ELISA, IF
CACNA1S	22279-1-AP	Rabbit Poly	ELISA, IHC, WB
CACNB1	13039-1-AP	Rabbit Poly	ELISA, WB
CACNB2	21801-1-AP	Rabbit Poly	ELISA, WB
CACNG1	18389-1-AP	Rabbit Poly	ELISA, IF, IHC
CACNG3	13729-1-AP	Rabbit Poly	ELISA, WB
CADM1	14335-1-AP	Rabbit Poly	ELISA, WB
CADM3	15660-1-AP	Rabbit Poly	ELISA, FC, WB
Calbindin	14479-1-AP	Rabbit Poly	ELISA, IHC, IP, WB
Calcyphosine	16926-1-AP	Rabbit Poly	ELISA, WB
Calcyphosine 2	11924-1-AP	Rabbit Poly	ELISA, IHC, WB
Caldesmon	20887-1-AP	Rabbit Poly	ELISA, IF, IHC, WB
CALHM1	22042-1-AP	Rabbit Poly	ELISA, IHC, WB
Calpastatin	 12250-1-AP	Rabbit Poly	ELISA, IF, IHC, IP, WB
Calponin	3 13938-1-AP	Rabbit Poly	ELISA, IHC, IP, WB
Calponin	24855-1-AP	Rabbit Poly	ELISA, IHC, WB
Calretinin	12278-1-AP	Rabbit Poly	ELISA, IHC, WB
CAMK1D	13613-1-AP	Rabbit Poly	ELISA, WB
CAMK2	 13730-1-AP	Rabbit Poly	ELISA, IF, IHC, WB
CaMKII alpha-Specific	20666-1-AP	Rabbit Poly	ELISA, IF, IHC, IP, WB
CaMKII beta	11533-1-AP	Rabbit Poly	ELISA, IHC, IP, WB
CaMKII beta	55218-1-AP	Rabbit Poly	ELISA, IF, IHC, WB
CaMKII delta	15443-1-AP	Rabbit Poly	ELISA, IF, IHC, WB
CaMKII delta-Specific	20667-1-AP	Rabbit Poly	ELISA, IHC, IP, WB

More validation images available on our website.



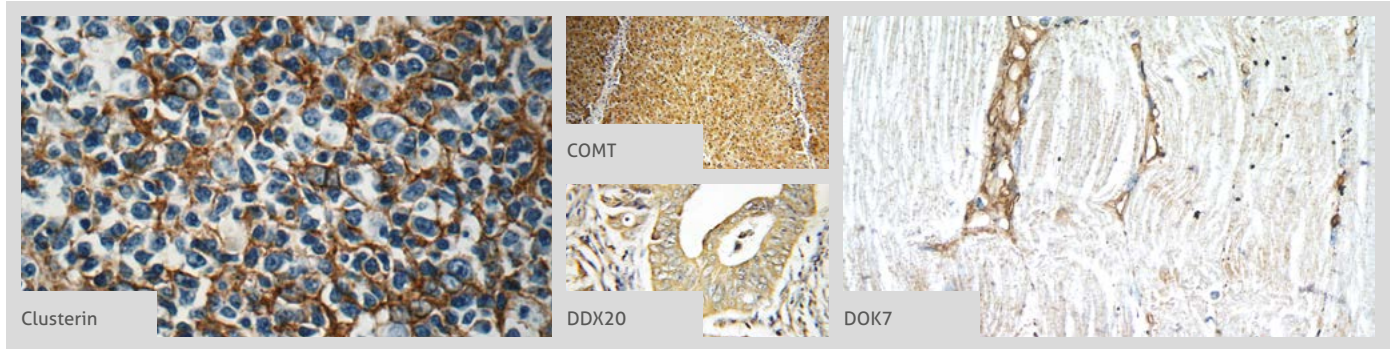
Antibody Name	Cat. No.	Type	Applications
CaMKII gamma	3 12666-2-AP	Rabbit Poly	ELISA, IF, IHC, IP, WB
CaMKII gamma-Specific	55140-1-AP	Rabbit Poly	ELISA, IHC, WB
CaMKIV	13263-1-AP	Rabbit Poly	ELISA, IHC, WB
CAMKK1	13624-1-AP	Rabbit Poly	ELISA, IHC, IP, WB
CAMKK2	4 11549-1-AP	Rabbit Poly	ELISA, IF, IHC, WB
CAMSAP1L1	9 17880-1-AP	Rabbit Poly	ELISA, IF, IHC, IP, WB
CAPS1	11490-2-AP	Rabbit Poly	ELISA, IF, IHC, WB
Cardiac Troponin I	21652-1-AP	Rabbit Poly	ELISA, IHC, IP, WB
Cardiac Troponin T	4 15513-1-AP	Rabbit Poly	ELISA, IHC, WB
CARTPT	13212-1-AP	Rabbit Poly	ELISA, WB
CASK	55277-1-AP	Rabbit Poly	ELISA, WB
Caspase 3	107 19677-1-AP	Rabbit Poly	ELISA, IF, IHC, IP, WB
Caspase 3, p17-specific	29 25546-1-AP	Rabbit Poly	ELISA, FC, IF, IHC, WB
CASPR	55417-1-AP	Rabbit Poly	ELISA, IHC, WB
CBLN2	20558-1-AP	Rabbit Poly	ELISA, WB
CBLN4	20559-1-AP	Rabbit Poly	ELISA, IHC, WB
CCDC115	20636-1-AP	Rabbit Poly	ELISA, WB
CCDC158	20396-1-AP	Rabbit Poly	ELISA, IHC, IP, WB
CCDC22	4 16636-1-AP	Rabbit Poly	ELISA, IP, WB
CCDC28A	14807-1-AP	Rabbit Poly	ELISA, IF, WB
CCDC28B	11530-1-AP	Rabbit Poly	ELISA, WB
CCDC42	20833-1-AP	Rabbit Poly	ELISA, IHC, WB
CCK	13074-2-AP	Rabbit Poly	ELISA, IHC, WB
CCKAR-specific	16550-1-AP	Rabbit Poly	ELISA, IHC
CCKBR-specific	16549-1-AP	Rabbit Poly	ELISA, IF, WB
CCP1	5 14067-1-AP	Rabbit Poly	ELISA, IF, IHC, IP, WB
CCR5	17476-1-AP	Rabbit Poly	ELISA, FC, WB
CCRN4L	10714-1-AP	Rabbit Poly	ELISA
CCS	22802-1-AP	Rabbit Poly	ELISA, IF, IP, WB
CCT4	21524-1-AP	Rabbit Poly	ELISA, IHC, WB

Antibody Name	Cat. No.	Type	Applications
CD11B/ Integrin alpha M	2 20991-1-AP	Rabbit Poly	ELISA, FC, IHC, WB
CD11B/ Integrin alpha M	21851-1-AP	Rabbit Poly	ELISA, IHC
CD133	14 18470-1-AP	Rabbit Poly	ELISA, FC, IF, IHC, WB
CD133	18495-1-AP	Rabbit Poly	ELISA, WB
CD133-1,2,3	19946-1-AP	Rabbit Poly	ELISA, IP, WB
CD133-1,2,3,5,7	19945-1-AP	Rabbit Poly	ELISA, IP, WB
CD138/ Syndecan-1	4 10593-1-AP	Rabbit Poly	Dot Blotting, CoIP, ELISA, IF, IHC, WB
CD138/ Syndecan-1	60185-1-Ig	Mouse Mono	ELISA, WB
CD138/ Syndecan-1	60185-2-Ig	Mouse Mono	ELISA, IHC, WB
CD147	7 11989-1-AP	Rabbit Poly	ELISA, IF, IHC, IP, WB
CD24	18330-1-AP	Rabbit Poly	ELISA, WB
CD24	10600-1-AP	Rabbit Poly	ELISA, IHC, WB
CD3 epsilon	3 17617-1-AP	Rabbit Poly	ELISA, FC, IF, IHC, IP, WB
CD3 epsilon	60181-1-Ig	Mouse Mono	ELISA, FC, IHC, WB
CD33	17425-1-AP	Rabbit Poly	ELISA, FC, IF, IHC, WB
CD34	4 14486-1-AP	Rabbit Poly	ELISA, IF, IHC, WB
CD71	66180-1-Ig	Mouse Mono	ELISA, FC, IF, IHC, IP, WB
CD98	2 15193-1-AP	Rabbit Poly	ELISA, FC, IF, IHC, IP, WB
CDA1	5 12087-2-AP	Rabbit Poly	ELISA, IF, IHC, IP, WB
CDC5L	12974-1-AP	Rabbit Poly	ELISA, IF, IP, WB
CDH23	13496-1-AP	Rabbit Poly	ELISA, WB
CDK1	10762-1-AP	Rabbit Poly	ELISA, WB
CDK1-Specific	16 19532-1-AP	Rabbit Poly	ELISA, IF, IHC, WB
CDK5	10430-1-AP	Rabbit Poly	ELISA, IF, WB
CEND1	13280-1-AP	Rabbit Poly	ELISA, WB
CGNL1	18031-1-AP	Rabbit Poly	ELISA, IHC, WB
CHAT	3 20747-1-AP	Rabbit Poly	ELISA, IF, IHC, WB
CHAT	24418-1-AP	Rabbit Poly	ELISA, IHC, IP, WB

00 This number shows the amount of times our antibody has been cited in a publication.

CHL1
→ CREB1

More validation images available on our website. 



Antibody Name	Cat. No.	Type	Applications
CHL1	25250-1-AP	Rabbit Poly	ELISA, WB
CHMP2B	2 12527-1-AP	Rabbit Poly	ELISA, IF, IHC, WB
CHN1	12048-1-AP	Rabbit Poly	ELISA, IHC, WB
CHRNA1	10613-1-AP	Rabbit Poly	ELISA, IF, IHC, WB
CHRNA10	55291-1-AP	Rabbit Poly	ELISA, WB
CHRNA3	4 10333-1-AP	Rabbit Poly	ELISA, FC, IHC, WB
CHRNA5	13516-1-AP	Rabbit Poly	ELISA, WB
CHRNA6	11388-1-AP	Rabbit Poly	ELISA, WB
CHRNA7	21379-1-AP	Rabbit Poly	ELISA, FC, WB
CHRNA7	60220-1-Ig	Mouse Mono	ELISA, WB
CHRNB1	11553-1-AP	Rabbit Poly	ELISA, IHC, IP, WB
CHRNB3	18037-1-AP	Rabbit Poly	ELISA, IHC
CHRNB4	22192-1-AP	Rabbit Poly	ELISA, FC, WB
Chromogranin A	10529-1-AP	Rabbit Poly	ELISA, IHC
Chromogranin A	23342-1-AP	Rabbit Poly	ELISA, IHC
Chromogranin A	60135-1-Ig	Mouse Mono	ELISA, IHC, WB
CHT1	21848-1-AP	Rabbit Poly	ELISA, IHC, IP, WB
CHURC1	12247-1-AP	Rabbit Poly	ELISA, IHC, WB
CIN85	3 12132-1-AP	Rabbit Poly	ELISA, IF, IHC, WB
CKMT1A	4 15346-1-AP	Rabbit Poly	ELISA, IHC, IP, WB
CKMT2	13207-1-AP	Rabbit Poly	ELISA, IHC, WB
Claudin 11	12152-1-AP	Rabbit Poly	ELISA, FC, IF, IHC, WB
CLCN1	18595-1-AP	Rabbit Poly	ELISA
CLEC14A	23964-1-AP	Rabbit Poly	ELISA, FC, WB
CLIP-115/ CYLN2	25088-1-AP	Rabbit Poly	ELISA, IP, WB
CLN3	20386-1-AP	Rabbit Poly	ELISA, IF, IHC, WB
CLOCK	18094-1-AP	Rabbit Poly	ELISA, IF, IHC, IP, WB
CLSTN1	12788-1-AP	Rabbit Poly	ELISA, IF, WB
CLTCL1	22283-1-AP	Rabbit Poly	ELISA, IHC, IP, WB
Clusterin	 12289-1-AP	Rabbit Poly	ELISA, IHC, IP, WB
Clusterin	66109-1-Ig	Mouse Mono	ELISA, IHC, WB

Antibody Name	Cat. No.	Type	Applications
CNGA3	21657-1-AP	Rabbit Poly	ELISA, WB
CNN2	21073-1-AP	Rabbit Poly	ELISA, IF, IHC, WB
CNN3	11509-1-AP	Rabbit Poly	ELISA, IF, IHC, IP, WB
CNNM4	14066-1-AP	Rabbit Poly	ELISA, IP, WB
CNPase	13427-1-AP	Rabbit Poly	ELISA, IF, IHC, WB
CNPY2, MSAP	66173-1-Ig	Mouse Mono	ELISA, IF, IHC, WB
CNPY2, MSAP	2 14635-1-AP	Rabbit Poly	ELISA, FC, IF, IHC, IP, WB
CNTFR	10796-1-AP	Rabbit Poly	ELISA, WB
CNTN4	12777-1-AP	Rabbit Poly	ELISA, WB
COCH	10635-1-AP	Rabbit Poly	ELISA
Cofilin	6 10960-1-AP	Rabbit Poly	ELISA, IF, IHC, WB
Cofilin	66057-1-Ig	Mouse Mono	ELISA, IF, IHC, WB
Coilin	6 10967-1-AP	Rabbit Poly	ELISA, FC, IF, IHC, IP, WB
COMT	 3 14754-1-AP	Rabbit Poly	ELISA, FC, IF, IHC, IP, WB
Connexin-43	4 15386-1-AP	Rabbit Poly	ELISA, FC, IF, IHC, IP, WB
CPEB1	4 13274-1-AP	Rabbit Poly	ELISA, IF, IHC, IP, WB
CPI17	11658-1-AP	Rabbit Poly	ELISA, IF, WB
CPLX1	3 10246-2-AP	Rabbit Poly	ELISA, IF, IHC, IP, WB
CPLX2	3 18149-1-AP	Rabbit Poly	ELISA, IHC, IP, WB
CPLX2	20249-1-AP	Rabbit Poly	ELISA, IHC, WB
CPLX3	2 16949-1-AP	Rabbit Poly	ELISA, IF, IHC, IP, WB
CPLX4	21222-1-AP	Rabbit Poly	ELISA, IHC, IP, WB
Creatine Kinase	15891-1-AP	Rabbit Poly	ELISA, WB
Creatine kinase B type	15137-1-AP	Rabbit Poly	ELISA, IHC, IP, WB
Creatine kinase B type-Specific	18713-1-AP	Rabbit Poly	ELISA, IF, IHC, WB
Creatine Kinase MM-Specific	18712-1-AP	Rabbit Poly	ELISA, IF, IHC, IP, WB
Creatine Kinase MM-Specific	60177-1-Ig	Mouse Mono	ELISA, IF, IHC, WB
CREB1	4 12208-1-AP	Rabbit Poly	ELISA, FC, IF, IHC, IP, WB



00 This number shows the amount of times our antibody has been cited in a publication.

Antibody Name	Cat. No.	Type	Applications
CREST	3 12439-1-AP	Rabbit Poly	CoIP, ELISA, IF, IHC, IP, WB
CREST	60314-1-Ig	Mouse Mono	ELISA, WB
CRH/CRF	2 10944-1-AP	Rabbit Poly	ELISA, IF, IHC, WB
CRHR1	2 20967-1-AP	Rabbit Poly	ELISA, IF, WB
CRIPT	11211-1-AP	Rabbit Poly	ELISA, IF, IP, WB
CRMP1	10317-1-AP	Rabbit Poly	ELISA, WB
CRMP2	14521-1-AP	Rabbit Poly	ELISA, IF, IHC, WB
CRMP2	14686-1-AP	Rabbit Poly	ELISA, IF, IHC, IP, WB
CRMP4	13661-1-AP	Rabbit Poly	ELISA, IHC, WB
CRMP4	18969-1-AP	Rabbit Poly	ELISA, IF, IHC, IP, WB
CRMP5	10525-1-AP	Rabbit Poly	ELISA, IF, IHC, WB
CRX	12047-1-AP	Rabbit Poly	CoIP, ELISA, IP, WB
CRYBA2	15750-1-AP	Rabbit Poly	ELISA, WB
CRYBB1	13760-1-AP	Rabbit Poly	ELISA, WB
CRYBB1	60273-1-Ig	Mouse Mono	ELISA, WB
CRYBB2	18154-1-AP	Rabbit Poly	ELISA, WB
CRYBB3	21009-1-AP	Rabbit Poly	ELISA, IF, WB
CRYGC	17931-1-AP	Rabbit Poly	ELISA, WB
CRYGN	21281-1-AP	Rabbit Poly	ELISA, WB
Cryptochrome 1	13474-1-AP	Rabbit Poly	ELISA, IF, IHC, WB
Cryptochrome 2	13997-1-AP	Rabbit Poly	ELISA, IF, IP, WB
CSHL1	11883-1-AP	Rabbit Poly	ELISA, IHC, WB
CSPG4, NG2	2 55027-1-AP	Rabbit Poly	ELISA, IHC, WB
CTBP2	2 10346-1-AP	Rabbit Poly	ELISA, IF, IP, WB
CUX1	2 11733-1-AP	Rabbit Poly	ELISA, IF, IP, WB
CUX2	24902-1-AP	Rabbit Poly	ELISA, WB
CWC15	25293-1-AP	Rabbit Poly	ELISA, IF, IHC, IP, WB
CYFIP2	16011-1-AP	Rabbit Poly	ELISA, IHC, IP, WB
DACH1	26 10914-1-AP	Rabbit Poly	ChIP, ELISA, IF, IHC, IP, WB
DARPP32	10748-1-AP	Rabbit Poly	ELISA, IHC, WB
DAT	3 22524-1-AP	Rabbit Poly	ELISA, IHC, IP, WB
DCLK1	21699-1-AP	Rabbit Poly	ELISA, IP, WB
DCX	13925-1-AP	Rabbit Poly	ELISA, WB
DDX20	 3 11324-1-AP	Rabbit Poly	ELISA, FC, IF, IHC, IP, WB
DDX23	10199-2-AP	Rabbit Poly	ELISA, WB
DDX5, p68	10804-1-AP	Rabbit Poly	ELISA, IHC, WB
DENND1A	25658-1-AP	Rabbit Poly	ELISA, IF, IHC, IP, WB
Desmin	4 16520-1-AP	Rabbit Poly	ELISA, FC, IF, IHC, IP, WB

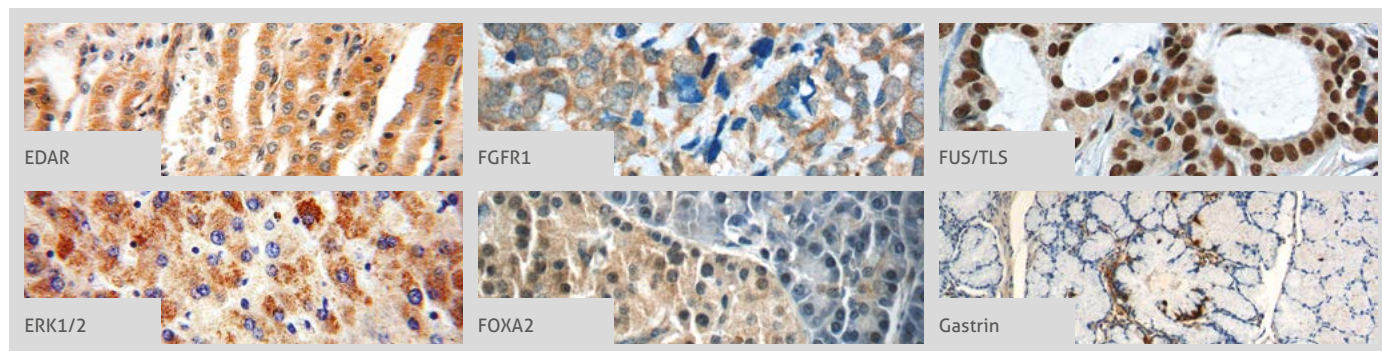
Antibody Name	Cat. No.	Type	Applications
Desmin	2 60226-1-Ig	Mouse Mono	ELISA, IHC, WB
DFNA5	13075-1-AP	Rabbit Poly	ELISA, WB
DHRS9	14560-1-AP	Rabbit Poly	ELISA, IF, IHC, WB
DHX35	24923-1-AP	Rabbit Poly	ELISA, IHC, WB
DHX38	4 10098-2-AP	Rabbit Poly	ChIP, ELISA, IF, IP, WB
DISC1-long-specific	15500-1-AP	Rabbit Poly	ELISA, IF, IHC, IP, WB
DISP1	12041-1-AP	Rabbit Poly	ELISA, WB
DLG1	55085-1-AP	Rabbit Poly	ELISA, IF, IHC, WB
DLG3	18036-1-AP	Rabbit Poly	ELISA, IP, WB
DLGAP3	55056-1-AP	Rabbit Poly	ELISA, WB
DLK1	9 10636-1-AP	Rabbit Poly	ELISA, FC, IHC, WB
DLK2	15680-1-AP	Rabbit Poly	ELISA, WB
DLX1	13046-1-AP	Rabbit Poly	ELISA, WB
DLX5	2 10592-1-AP	Rabbit Poly	ELISA, IHC, WB
DMXL2	24415-1-AP	Rabbit Poly	ELISA, IHC, WB
DNAJC5B	17364-1-AP	Rabbit Poly	ELISA, IF, IP, WB
DNM2	14605-1-AP	Rabbit Poly	ELISA, WB
DNM3	2 14737-1-AP	Rabbit Poly	ELISA, IF, IHC, IP, WB
DNMBP	17191-1-AP	Rabbit Poly	ELISA, IP, WB
DOC2B	20574-1-AP	Rabbit Poly	ELISA, IF, WB
DOCK7	13000-1-AP	Rabbit Poly	ELISA, IP, WB
DOK4	10481-2-AP	Rabbit Poly	ELISA, IHC, WB
DOK7	 22697-1-AP	Rabbit Poly	ELISA, IHC, WB
DOPA decarboxylase	2 10166-1-AP	Rabbit Poly	ELISA, IF, IHC, IP, WB
Dopamine beta Hydroxylase	10777-1-AP	Rabbit Poly	ELISA, IF, IHC, WB
DRD1	2 17934-1-AP	Rabbit Poly	ELISA, WB
DRD2	55084-1-AP	Rabbit Poly	ELISA, IHC, IP, WB
DRD5	3 20310-1-AP	Rabbit Poly	ELISA, FC, WB
Drebrin	3 10260-1-AP	Rabbit Poly	ELISA, IF, IHC, IP, WB
Drebrin	25770-1-AP	Rabbit Poly	ELISA, IF, WB
DTNA	10741-1-AP	Rabbit Poly	ELISA, IP, WB
DTNB	12045-1-AP	Rabbit Poly	ELISA, WB
DVL3	13444-1-AP	Rabbit Poly	ELISA, IF, IP, WB
Dynamin 1	18205-1-AP	Rabbit Poly	ELISA, IP, WB
Dynamitin	10031-2-AP	Rabbit Poly	ELISA, IP, WB
Dynamitin	10030-2-AP	Rabbit Poly	ELISA, IHC, IP, WB
Dynamitin	10032-1-AP	Rabbit Poly	ELISA, WB
Dynamitin	11361-1-AP	Rabbit Poly	ELISA, FC, IHC, WB

Dynamitin
 → **Fibulin-1**

Antibody Name	Cat. No.	Type	Applications
Dynamitin	60257-1-Ig	Mouse Mono	ELISA, IHC, WB
DYNC1H1	8 12345-1-AP	Rabbit Poly	ELISA, IF, IHC, WB
DYNC111	13808-1-AP	Rabbit Poly	ELISA, IHC, WB
Dysbindin	11132-1-AP	Rabbit Poly	ELISA, WB
Dystroglycan	11017-1-AP	Rabbit Poly	ELISA, IF, IHC, IP, WB
Dystrophin	12715-1-AP	Rabbit Poly	ELISA, IF, IHC, IP, WB
EAAT2	22515-1-AP	Rabbit Poly	ELISA, IHC, IP, WB
EAAT3	12686-1-AP	Rabbit Poly	ELISA, IHC, WB
EAAT4	12876-1-AP	Rabbit Poly	ELISA, WB
ECEL1	14222-1-AP	Rabbit Poly	ELISA
EDAR	 18032-1-AP	Rabbit Poly	ELISA, FC, IF, IHC, IP, WB
EFEMP2	12004-1-AP	Rabbit Poly	ELISA, IHC, IP, WB
EFTUD2	5 10208-1-AP	Rabbit Poly	ELISA, IF, IP, WB
EHD1	24657-1-AP	Rabbit Poly	ELISA, IF, IHC, IP, WB
EHD2	11440-1-AP	Rabbit Poly	ELISA, IHC, IP, WB
EHD3	2 25320-1-AP	Rabbit Poly	ELISA, WB
EHD4	11382-2-AP	Rabbit Poly	ELISA, IF, WB
EHF	13608-1-AP	Rabbit Poly	ELISA, WB
EIF2AK2, PKR	18244-1-AP	Rabbit Poly	ELISA, IF, IHC, IP, WB
EIF4A3	6 17504-1-AP	Rabbit Poly	ELISA, IF, IHC, IP, WB
EIF4A3	2 10463-1-AP	Rabbit Poly	ELISA, IP, WB
EIF4G1	3 15704-1-AP	Rabbit Poly	ELISA, IF, IHC, IP, WB
ELAVL2	3 14008-1-AP	Rabbit Poly	ELISA, IF, IHC, IP, WB
ELF1	22565-1-AP	Rabbit Poly	ELISA, IF, IHC, WB
ELF1	55029-1-AP	Rabbit Poly	ELISA, WB
ELOVL4	55023-1-AP	Rabbit Poly	ELISA, IF, IHC, WB
Emerin	4 10351-1-AP	Rabbit Poly	ELISA, FC, IF, IP, WB
ENC1	15007-1-AP	Rabbit Poly	ELISA, IHC, IP, WB
ENOX1	23750-1-AP	Rabbit Poly	ELISA, IHC, WB
ENOX2	6 10423-1-AP	Rabbit Poly	ELISA, IF, IHC, IP, WB
EPHA1-specific	18698-1-AP	Rabbit Poly	ELISA, FC, IF, IHC, IP, WB
EPHA4	21875-1-AP	Rabbit Poly	ELISA, FC, IF, IP, WB
EPHA7	13119-1-AP	Rabbit Poly	ELISA
EPHA8	13724-1-AP	Rabbit Poly	ELISA, FC, WB
EPHB4	20883-1-AP	Rabbit Poly	ELISA, FC, IHC, WB
Ephrin A3	12480-1-AP	Rabbit Poly	ELISA, IHC, IP, WB
Ephrin A4-Specific	19685-1-AP	Rabbit Poly	ELISA, WB
Ephrin B1	12999-1-AP	Rabbit Poly	ELISA, WB

Antibody Name	Cat. No.	Type	Applications
EPS15R	21243-1-AP	Rabbit Poly	ELISA, WB
ER	9 21244-1-AP	Rabbit Poly	ELISA, IF, IHC, WB
ERC1	22211-1-AP	Rabbit Poly	ELISA, IF, WB
ERC2	21396-1-AP	Rabbit Poly	ELISA, IF, WB
ERK1/2	 28 16443-1-AP	Rabbit Poly	ELISA, IF, IHC, WB
ERK1/2	2 51068-1-AP	Rabbit Poly	ELISA, IF, IHC, WB
ESPN	20717-1-AP	Rabbit Poly	ELISA, WB
ESR2	8 14007-1-AP	Rabbit Poly	ELISA, IHC, WB
ESR2	60197-1-Ig	Mouse Mono	ELISA, WB
ESR2 Beta-3	55441-1-AP	Rabbit Poly	ELISA, IHC
ESR2 Beta-6	55471-1-AP	Rabbit Poly	ELISA, IHC, WB
ETV4	10684-1-AP	Rabbit Poly	ELISA, IHC, WB
EWS	55191-1-AP	Rabbit Poly	ELISA, WB
EYA1	22658-1-AP	Rabbit Poly	ELISA, IF, IHC, IP, WB
EYA2	11314-1-AP	Rabbit Poly	ELISA, IF, IHC, WB
EYA3	21196-1-AP	Rabbit Poly	ELISA, IF, IHC, IP, WB
EYA4	24691-1-AP	Rabbit Poly	ELISA, IF, WB
FA2H	15452-1-AP	Rabbit Poly	ELISA, IF, IHC, WB
FABP7	51010-1-AP	Rabbit Poly	ELISA, IF, IHC, WB
FABP7	17456-1-AP	Rabbit Poly	ELISA, WB
FABP7-Specific	14836-1-AP	Rabbit Poly	ELISA, IHC, WB
FBXO7	10696-1-AP	Rabbit Poly	CoIP, ELISA, IHC, IP, WB
FcRn-Specific	2 16190-1-AP	Rabbit Poly	ELISA, IF, WB
FE65	12526-1-AP	Rabbit Poly	ELISA, IF, IHC, WB
Ferritin light chain	6 10727-1-AP	Rabbit Poly	ELISA, IF, IHC, IP, WB
Fetuin-A	16571-1-AP	Rabbit Poly	ELISA, IHC, WB
Fetuin-A	66094-1-Ig	Mouse Mono	ELISA, IF, IHC, IP, WB
fetuin-B	18052-1-AP	Rabbit Poly	ELISA, IHC, WB
FEV	25058-1-AP	Rabbit Poly	ELISA, WB
FGF1	17400-1-AP	Rabbit Poly	ELISA, IHC
FGF13	13201-1-AP	Rabbit Poly	ELISA, IHC, WB
FGFR1	 60325-1-Ig	Mouse Mono	ELISA, FC, IHC, WB
FGFR2	13042-1-AP	Rabbit Poly	ELISA, IF, IHC, WB
fibrillin 2-Specific	20252-1-AP	Rabbit Poly	ELISA, IHC, WB
Fibromodulin	2 60108-1-Ig	Mouse Mono	ELISA, IHC, WB
Fibromodulin	13281-1-AP	Rabbit Poly	ELISA, WB
Fibulin 5	2 12188-1-AP	Rabbit Poly	ELISA, IHC, IP, WB
Fibulin 5	2 60081-1-Ig	Mouse Mono	ELISA, IF, IHC, WB
Fibulin-1	20425-1-AP	Rabbit Poly	ELISA, WB

More validation images available on our website.



Antibody Name	Cat. No.	Type	Applications
FIGLN1	17604-1-AP	Rabbit Poly	ELISA, IF, IP, WB
Filensin	17492-1-AP	Rabbit Poly	ELISA, IF, WB
FIS1	22 10956-1-AP	Rabbit Poly	ELISA, IF, IHC, IP, WB
FJX1	17417-1-AP	Rabbit Poly	ELISA, IHC, WB
FKBP1A	2 10273-1-AP	Rabbit Poly	ELISA, IHC, WB
FKBP3	11755-1-AP	Rabbit Poly	ELISA, WB
FKBP5	2 14155-1-AP	Rabbit Poly	ELISA, IHC, IP, WB
FKBP52	5 10655-1-AP	Rabbit Poly	ELISA, FC, IF, IHC, IP, WB
FKBP52	22623-1-AP	Rabbit Poly	ELISA, IF, IHC, WB
FKBP52	66040-1-Ig	Mouse Mono	ELISA, FC, IF, IHC, WB
FKBP52	66040-2-Ig	Mouse Mono	ELISA, IF, IHC, WB
FMN2	11259-1-AP	Rabbit Poly	ELISA, IF, IHC, WB
FMR1	13755-1-AP	Rabbit Poly	ELISA, IF, IHC, IP, WB
FOXA1	20411-1-AP	Rabbit Poly	ELISA, IHC, WB
FOXA2	22474-1-AP	Rabbit Poly	ELISA, IF, IHC, IP, WB
FOXB1	24285-1-AP	Rabbit Poly	ELISA, WB
FOXC2	23066-1-AP	Rabbit Poly	ELISA, WB
FOXD4	24835-1-AP	Rabbit Poly	ELISA, WB
FOXD4L6	22081-1-AP	Rabbit Poly	ELISA, WB
FOXE3	55301-1-AP	Rabbit Poly	ELISA, WB
FOXG1	12764-1-AP	Rabbit Poly	ELISA, WB
FOXH1-Specific	20268-1-AP	Rabbit Poly	ELISA, WB
FOXJ3	19751-1-AP	Rabbit Poly	ELISA, WB
FOXJ3	21240-1-AP	Rabbit Poly	ELISA, WB
FOXM1	7 13147-1-AP	Rabbit Poly	ELISA, IHC, IP, WB
FOXO1	4 18592-1-AP	Rabbit Poly	ELISA, FC, IHC, WB
FOXO3A	5 10849-1-AP	Rabbit Poly	ELISA, IF, IHC, WB
FOXO4	2 21535-1-AP	Rabbit Poly	ELISA, IHC, WB
FOXO4	19121-1-AP	Rabbit Poly	ELISA, IF, WB
FOXP1	22051-1-AP	Rabbit Poly	ELISA, WB
FOXP2	20529-1-AP	Rabbit Poly	ELISA, IP, WB

Antibody Name	Cat. No.	Type	Applications
FOXP3	3 22228-1-AP	Rabbit Poly	ELISA, IF, IHC, IP, WB
FOXP3	22173-1-AP	Rabbit Poly	ELISA, WB
FOXP4	16772-1-AP	Rabbit Poly	ELISA, IHC, IP, WB
FOXQ1	23718-1-AP	Rabbit Poly	ELISA, WB
Frizzled 9	13865-1-AP	Rabbit Poly	ELISA, WB
FUS/TLS	29 11570-1-AP	Rabbit Poly	ELISA, FC, IF, IHC, IP, WB
FUS/TLS	7 60160-1-Ig	Mouse Mono	ELISA, IF, IHC, IP, WB
FXR2	12552-1-AP	Rabbit Poly	ELISA, IF, IP, WB
GABBR1	13940-1-AP	Rabbit Poly	ELISA, WB
GABRA1	12410-1-AP	Rabbit Poly	ELISA, FC, IP, WB
GABRA3	12708-1-AP	Rabbit Poly	ELISA, WB
GABRA4	12979-1-AP	Rabbit Poly	ELISA, IP, WB
GABRB1	20183-1-AP	Rabbit Poly	ELISA, IP, WB
GABRD	15623-1-AP	Rabbit Poly	ELISA, WB
GABRG1	12871-1-AP	Rabbit Poly	ELISA, IHC, WB
GABRG2	14104-1-AP	Rabbit Poly	ELISA, FC, IF, IHC, IP, WB
GAC-specific	6 19958-1-AP	Rabbit Poly	ELISA, IHC, IP, WB
GAD2	20746-1-AP	Rabbit Poly	ELISA, IF, IP, WB
GAD2	21760-1-AP	Rabbit Poly	ELISA, IP, WB
GAK	12147-1-AP	Rabbit Poly	ELISA, IF, WB
Galectin-3	2 14979-1-AP	Rabbit Poly	ELISA, IF, IHC, IP, WB
Galectin-3	60207-1-Ig	Mouse Mono	ELISA, IF, IHC, WB
GAMT	10880-1-AP	Rabbit Poly	ELISA, IHC, WB
GAN	14305-1-AP	Rabbit Poly	ELISA, WB
GAP43	3 16971-1-AP	Rabbit Poly	ELISA, IHC, IP, WB
GARS	15831-1-AP	Rabbit Poly	ELISA, IF, IHC, IP, WB
Gastrin	18143-1-AP	Rabbit Poly	ELISA, IHC, WB
GATA2	2 11103-1-AP	Rabbit Poly	ELISA, IF, IHC, WB
GATA3	8 10417-1-AP	Rabbit Poly	ChIP, ELISA, IHC, WB
GBP2	3 11854-1-AP	Rabbit Poly	ELISA, IF, IHC, WB

00 This number shows the amount of times our antibody has been cited in a publication.

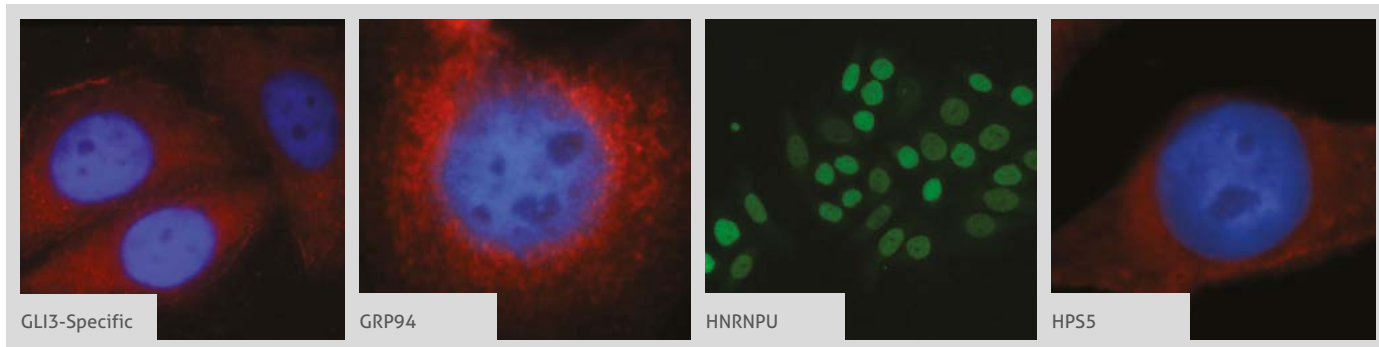
GCAP1
 → GSK3B

Antibody Name	Cat. No.	Type	Applications
GCAP1	12944-1-AP	Rabbit Poly	ELISA, WB
GCHFR	18809-1-AP	Rabbit Poly	ELISA, IHC, WB
GCNF	12712-1-AP	Rabbit Poly	ELISA, IHC, IP, WB
GDI1	3 10249-1-AP	Rabbit Poly	ELISA, IF, IHC, IP, WB
GDI1	55214-1-AP	Rabbit Poly	ELISA, WB
GDI2	9 10116-1-AP	Rabbit Poly	ELISA, IHC, WB
GDI2	55096-1-AP	Rabbit Poly	ELISA, IHC, WB
GDI2	60078-1-Ig	Mouse Mono	ELISA, IF, IHC, WB
GEFT	3 51004-1-AP	Rabbit Poly	ELISA, WB
GEFT	17028-1-AP	Rabbit Poly	ELISA, IP, WB
GEFT	66012-1-Ig	Mouse Mono	ELISA, IHC, WB
GEFT-Specific	11 14839-1-AP	Rabbit Poly	ELISA, IF, IHC, IP, WB
GEMIN4	12408-1-AP	Rabbit Poly	ELISA, IP, WB
GEMIN5	24897-1-AP	Rabbit Poly	ELISA, IF, IHC, IP, WB
GEMIN6	12307-2-AP	Rabbit Poly	ELISA, WB
GEMIN7	10625-1-AP	Rabbit Poly	ELISA
GEMIN8	15251-1-AP	Rabbit Poly	ELISA, IHC, IP, WB
gephyrin	12681-1-AP	Rabbit Poly	ELISA, IF, IP, WB
GFAP	20 16825-1-AP	Rabbit Poly	ELISA, IF, IHC, WB
GFAP	6 60190-1-Ig	Mouse Mono	ELISA, IF, IHC, IP, WB
GFAP	23935-1-AP	Rabbit Poly	ELISA, IHC, IP, WB
GFRA2	21973-1-AP	Rabbit Poly	ELISA, IHC, WB
GFRA2	55038-1-AP	Rabbit Poly	ELISA, IHC, WB
GFRA3	25379-1-AP	Rabbit Poly	ELISA, WB
GH2	55240-1-AP	Rabbit Poly	ELISA, IHC, WB
GIRK2	21647-1-AP	Rabbit Poly	ELISA, WB
GK3P	14176-1-AP	Rabbit Poly	ELISA, IHC, WB
GLAST	20785-1-AP	Rabbit Poly	ELISA, IHC, WB
GLI3-Specific	3 19949-1-AP	Rabbit Poly	ELISA, FC, IF, IHC, IP, WB
GLRA1	17951-1-AP	Rabbit Poly	ELISA, FC, WB
GLRA3	13145-1-AP	Rabbit Poly	ELISA, WB
Glucagon	15954-1-AP	Rabbit Poly	ELISA, IHC
GLUT1	10 21829-1-AP	Rabbit Poly	ELISA, FC, IF, IHC, WB
Glutamate receptor 2	2 11994-1-AP	Rabbit Poly	ELISA, FC, IP, WB
Glutamine synthetase	4 11037-2-AP	Rabbit Poly	ELISA, FC, IHC, WB
Glypican 1	16700-1-AP	Rabbit Poly	ELISA, IF, IHC, IP, WB
Glypican 4	2 13048-1-AP	Rabbit Poly	ELISA, IF, WB
GMF-beta	3 10690-1-AP	Rabbit Poly	ELISA, ICC, IHC, WB

Antibody Name	Cat. No.	Type	Applications
GNAQ	13927-1-AP	Rabbit Poly	ELISA, WB
GNAS	10150-2-AP	Rabbit Poly	ELISA, IHC, IP, WB
GNAT1	55167-1-AP	Rabbit Poly	ELISA, IF, WB
GNB5	3 11045-2-AP	Rabbit Poly	ELISA, IF, IHC, IP, WB
GNRHR	3 19950-1-AP	Rabbit Poly	ELISA, FC, IHC, IP, WB
GOPC	12163-1-AP	Rabbit Poly	ELISA, IF, IHC, WB
GOT1	2 14886-1-AP	Rabbit Poly	ELISA, IF, IP, WB
GOT1	60317-1-Ig	Mouse Mono	ELISA, IHC, WB
GPI	2 15171-1-AP	Rabbit Poly	ELISA, IF, IP, WB
GPM6A	15044-1-AP	Rabbit Poly	ELISA, IHC, IP, WB
GPMB	20338-1-AP	Rabbit Poly	ELISA, IHC, WB
GPR105	20190-1-AP	Rabbit Poly	ELISA, IHC
GPR37/Pael-R	2 14820-1-AP	Rabbit Poly	ELISA, IF, WB
GPR58/TAAR2	24609-1-AP	Rabbit Poly	ELISA, WB
GPR83	23850-1-AP	Rabbit Poly	ELISA, WB
GPRC5A, RAI3	10309-1-AP	Rabbit Poly	ELISA, FC, IHC, WB
GPRIN1	13771-1-AP	Rabbit Poly	ELISA, IP, WB
GPRIN3-Specific	20212-1-AP	Rabbit Poly	ELISA, IF, WB
GRAF	17747-1-AP	Rabbit Poly	ELISA, IHC, IP, WB
Granulin	5 18410-1-AP	Rabbit Poly	ELISA, IHC, IP, WB
Granulin	10053-1-AP	Rabbit Poly	ELISA, IHC, WB
GRIA4	23350-1-AP	Rabbit Poly	ELISA, FC, IHC, IP, WB
GRID1	13040-1-AP	Rabbit Poly	ELISA, IHC, WB
GRIK2	13597-1-AP	Rabbit Poly	ELISA, FC, WB
GRIP1	22398-1-AP	Rabbit Poly	ELISA, IF, IHC, IP, WB
GRK1	24606-1-AP	Rabbit Poly	ELISA, IP, WB
GRK2	2 13990-1-AP	Rabbit Poly	ELISA, FC, IHC, IP, WB
GRK5	17032-1-AP	Rabbit Poly	ELISA, IHC, WB
GRK6	11439-1-AP	Rabbit Poly	ELISA, IHC, IP, WB
Growth hormone	17867-1-AP	Rabbit Poly	ELISA, WB
Growth hormone	55243-1-AP	Rabbit poly	ELISA, IHC, WB
GRP94	7 14700-1-AP	Rabbit poly	ELISA, FC, IF, IHC, IP, WB
GRP94	10979-1-AP	Rabbit poly	ELISA, FC, IF, IHC, IP, WB
GRP94	60012-1-Ig	Mouse Mono	ELISA, FC, IF, IHC, WB
GSK3A	13419-1-AP	Rabbit poly	ELISA, IHC, WB
GSK3B	25 22104-1-AP	Rabbit poly	ELISA, IF, IHC, IP, WB
GSK3B	15113-1-AP	Rabbit poly	ELISA, IHC, IP, WB
GSK3B	51065-1-AP	Rabbit poly	ELISA, IF, IHC, IP, WB

GSK3B
IFNGR1 ←

More validation images available on our website.



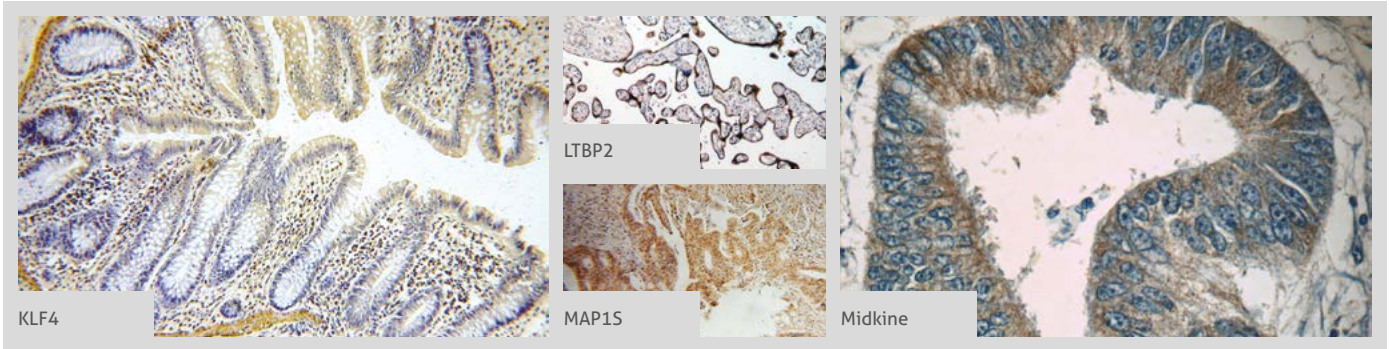
Antibody Name	Cat. No.	Type	Applications
GSK3B	24198-1-AP	Rabbit Poly	ELISA, FC, IF, IHC, IP, WB
GSTP1	10 15902-1-AP	Rabbit Poly	ELISA, FC, IF, IHC, IP, WB
GTF2H2	16005-1-AP	Rabbit Poly	ELISA, WB
GUCY2D	55127-1-AP	Rabbit Poly	ELISA, WB
GUCY2F	25252-1-AP	Rabbit Poly	ELISA, IHC, WB
HAP1	25133-1-AP	Rabbit Poly	ELISA, IF, IHC, WB
Harmonin	51028-2-AP	Rabbit Poly	ELISA, IHC, WB
Harmonin	11358-1-AP	Rabbit Poly	ELISA, IF, IHC, IP, WB
HAS3	15609-1-AP	Rabbit Poly	ELISA, WB
HCN2	55245-1-AP	Rabbit Poly	ELISA, IHC, IP, WB
HCN4	55224-1-AP	Rabbit Poly	ELISA, WB
HES5	22666-1-AP	Rabbit Poly	ELISA, IHC, WB
HEXA	2 11317-1-AP	Rabbit Poly	ELISA, IF, IHC, WB
HIF1a	28 20960-1-AP	Rabbit Poly	CoIP, ELISA, FC, IF, IHC, WB
HIP1	22231-1-AP	Rabbit Poly	ELISA, IF, IHC, IP, WB
HIP14; ZDHHC17	15465-1-AP	Rabbit Poly	ELISA, IHC, WB
HIP1R	16814-1-AP	Rabbit Poly	ELISA, IHC, IP, WB
HIP1-Specific	19688-1-AP	Rabbit Poly	ELISA, IHC, IP, WB
HLA-DRA	17221-1-AP	Rabbit Poly	ELISA, IHC, WB
HLA-DRB5	21702-1-AP	Rabbit Poly	ELISA, IHC, WB
HLF	12870-1-AP	Rabbit Poly	ELISA, WB
HMGB1	24 10829-1-AP	Rabbit Poly	ChIP, ELISA, FC, IF, IHC, IP, WB
HNRNPA1	4 11176-1-AP	Rabbit Poly	ELISA, IF, IHC, WB
HNRNPA2B1	5 14813-1-AP	Rabbit Poly	ELISA, IF, IHC, IP, WB
HNRNPA3	25142-1-AP	Rabbit Poly	ELISA, IF, WB
HNRNPC	11760-1-AP	Rabbit Poly	ELISA, FC, IF, IHC, IP, WB
HNRNPF	14974-1-AP	Rabbit Poly	ELISA, IF, IHC, WB
HNRNPH1	14774-1-AP	Rabbit Poly	ELISA, IF, IHC, WB
HNRNPK	4 11426-1-AP	Rabbit Poly	ELISA, FC, IF, IHC, IP, WB

Antibody Name	Cat. No.	Type	Applications
HNRNPR	15018-1-AP	Rabbit Poly	ELISA, IF, IHC, WB
HNRNPU	14599-1-AP	Rabbit Poly	ELISA, IF, IP, WB
HNRNPU	16365-1-AP	Rabbit Poly	ELISA, FC, IF, IHC, IP, WB
HOMER1	3 12433-1-AP	Rabbit Poly	ELISA, FC, IF, IHC, IP, WB
HOMER2	11143-1-AP	Rabbit Poly	ELISA, WB
HOMER3	16624-1-AP	Rabbit Poly	ELISA, WB
HPCAL4	12470-1-AP	Rabbit Poly	ELISA, IHC, WB
HPGDS	22522-1-AP	Rabbit Poly	ELISA, IHC, WB
HPS1	2 15077-1-AP	Rabbit Poly	ELISA, IF, WB
HPS3	10768-1-AP	Rabbit Poly	ELISA, IF, IHC, WB
HPS5	3 13901-1-AP	Rabbit Poly	ELISA, IF, IHC, WB
HPS6	11371-1-AP	Rabbit Poly	ELISA, IHC, WB
HRC	18142-1-AP	Rabbit Poly	ELISA, IF, WB
HRH1	13413-1-AP	Rabbit Poly	ELISA, IHC, WB
HRH2	13414-1-AP	Rabbit Poly	ELISA, WB
HS1BP3	12845-1-AP	Rabbit Poly	ELISA, IHC, WB
Hsc70	9 10654-1-AP	Rabbit Poly	ELISA, IF, IHC, IP, WB
HSD17B6	11855-1-AP	Rabbit Poly	ELISA, IHC, WB
HSP27	11 18284-1-AP	Rabbit Poly	ELISA, IF, WB
HSP90AB1	3 11405-1-AP	Rabbit Poly	ELISA, FC, IF, IHC, IP, WB
HSPB2	21755-1-AP	Rabbit Poly	ELISA, IF, IHC, WB
HTR3A	10443-1-AP	Rabbit Poly	ELISA, FC, IHC, WB
HTRA2	2 15775-1-AP	Rabbit Poly	ELISA, IF, IHC, IP, WB
HuC	55047-1-AP	Rabbit Poly	ELISA, IHC, WB
HuA/B/C/D	13032-1-AP	Rabbit Poly	ELISA, IHC, IP, WB
IBA1	36 10904-1-AP	Rabbit Poly	ELISA, IF, IHC, IP, WB
ICA1L	15622-1-AP	Rabbit Poly	ELISA, IF
ICA1L	18021-1-AP	Rabbit Poly	ELISA, IF, IHC, WB
IDE	2 21728-1-AP	Rabbit Poly	ELISA, IHC, IP, WB
IFNGR1	10808-1-AP	Rabbit Poly	ELISA, FC, IHC, IP, WB

00 This number shows the amount of times our antibody has been cited in a publication.

IFNGR2
→ LDB1



More validation images available on our website. 



Antibody Name	Cat. No.	Type	Applications
IFNGR2	10266-1-AP	Rabbit Poly	ELISA, FC, WB
IFT57	10 11083-1-AP	Rabbit Poly	ELISA, IF, IHC, IP, WB
IGF1A-Specific	6 20214-1-AP	Rabbit Poly	ELISA, IF, IHC, IP, WB
IGF1B-Specific	20215-1-AP	Rabbit Poly	ELISA, IHC, WB
IL1 beta	18 16806-1-AP	Rabbit Poly	ELISA, IF, IHC, WB
IL1 beta	60136-1-Ig	Mouse Mono	ELISA
IMPDH1	22092-1-AP	Rabbit Poly	ELISA, IF, IHC, IP, WB
INPP5A	21723-1-AP	Rabbit Poly	ELISA, WB
INPP5B	15141-1-AP	Rabbit Poly	ELISA, IHC, WB
INSR	20433-1-AP	Rabbit Poly	ELISA, IP, WB
Integrin beta-1	8 12594-1-AP	Rabbit Poly	ELISA, WB
Integrin beta-4	21738-1-AP	Rabbit Poly	ELISA, FC, IHC, IP, WB
Interferon gamma	13 15365-1-AP	Rabbit Poly	ELISA, IF, IHC, WB
Islet 1	15661-1-AP	Rabbit Poly	ELISA, IHC, IP, WB
ITM2C	13601-1-AP	Rabbit Poly	ELISA, IHC, WB
Islet 1	15661-1-AP	Rabbit Poly	ELISA, IHC, IP, WB
ITM2C	13601-1-AP	Rabbit Poly	ELISA, IHC, WB
ITM2C	60095-1-Ig	Mouse Mono	ELISA, IF, WB
ITPR1-specific	19962-1-AP	Rabbit Poly	ELISA, FC, IHC, WB
IVNS1ABP	14741-1-AP	Rabbit Poly	ELISA, IP, IHC, WB
JNK	19 51151-1-AP	Rabbit Poly	ELISA, IF, IP, WB
JNK	3 10023-1-AP	Rabbit Poly	ELISA, IF, IHC, IP, WB
JNK	2 24164-1-AP	Rabbit Poly	ELISA, IF, IHC, IP, WB
JTV1	9 10424-1-AP	Rabbit Poly	ELISA, IF, IHC, IP, WB
KALRN	19740-1-AP	Rabbit Poly	ELISA, WB
KARS	14951-1-AP	Rabbit Poly	ELISA, IF, IHC, WB
KCNE1	15150-1-AP	Rabbit Poly	ELISA, IF, WB
KCNJ5	18063-1-AP	Rabbit Poly	ELISA, WB
KCNN3	17188-1-AP	Rabbit Poly	ELISA, IF, WB
KGA/GAC	23 12855-1-AP	Rabbit Poly	ELISA, IF, IHC, IP, WB

Antibody Name	Cat. No.	Type	Applications
KGA/GAM/GAC	23549-1-AP	Rabbit Poly	ELISA, IF, IHC, IP, WB
KGA-Specific	3 20170-1-AP	Rabbit Poly	ELISA, IF, IHC, IP, WB
KIAA1191	20637-1-AP	Rabbit Poly	ELISA, IF, WB
KIAA1199	2 21129-1-AP	Rabbit Poly	ELISA, IF, IHC, WB
KIF5A	21186-1-AP	Rabbit Poly	ELISA, IHC, IP, WB
KIF5B	21632-1-AP	Rabbit Poly	ELISA, IF, IHC, IP, WB
Kir2.1	19965-1-AP	Rabbit Poly	ELISA, IHC, WB
Kir2.2	14135-1-AP	Rabbit Poly	ELISA, FC, WB
KIRREL3	18055-1-AP	Rabbit Poly	ELISA, WB
KISS1R-Specific	15505-1-AP	Rabbit Poly	ELISA, FC, IF, WB
KLC1	19028-1-AP	Rabbit Poly	ELISA, IF, IHC, WB
KLF12	13156-1-AP	Rabbit Poly	ELISA, IHC, WB
KLF4	 8 11880-1-AP	Rabbit Poly	ELISA, IF, IHC, IP, WB
KLF5	21017-1-AP	Rabbit Poly	ELISA, IF, IP, WB
KLF7	13125-1-AP	Rabbit Poly	ELISA, IP, WB
KLHL2	14449-1-AP	Rabbit Poly	ELISA, IF, WB
KLHL20	18111-1-AP	Rabbit Poly	ELISA, IHC, WB
KLHL3	5 16951-1-AP	Rabbit Poly	ELISA, IF, IHC, IP, WB
Kv1.2	14235-1-AP	Rabbit Poly	ELISA, IP, WB
Kv1.3	14079-1-AP	Rabbit Poly	ELISA, WB
Kv1.4-Specific	19697-1-AP	Rabbit Poly	ELISA, WB
LAMA4	3 10465-1-AP	Rabbit Poly	ELISA, IHC, WB
LAMP1	55273-1-AP	Rabbit Poly	ELISA, IF, WB
LAMP3	2 12632-1-AP	Rabbit Poly	ELISA, IF, IHC, IP, WB
LASP1	5 10515-1-AP	Rabbit Poly	ELISA, IF, IHC, IP, WB
LC3	20 12135-1-AP	Rabbit Poly	ELISA, IF, IHC, WB
LC3	2 14600-1-AP	Rabbit Poly	ELISA, FC, IF, IHC, IP, WB
LC3A/B	10 66139-1-Ig	Mouse Mono	ELISA, FC, IF, IHC, WB
LC3A-Specific	2 18722-1-AP	Rabbit Poly	ELISA, FC, IF, WB
LC3B-Specific	17 18725-1-AP	Rabbit Poly	ELISA, FC, IF, IHC, WB
LDB1	16650-1-AP	Rabbit Poly	ELISA, IHC, WB

00 This number shows the amount of times our antibody has been cited in a publication.

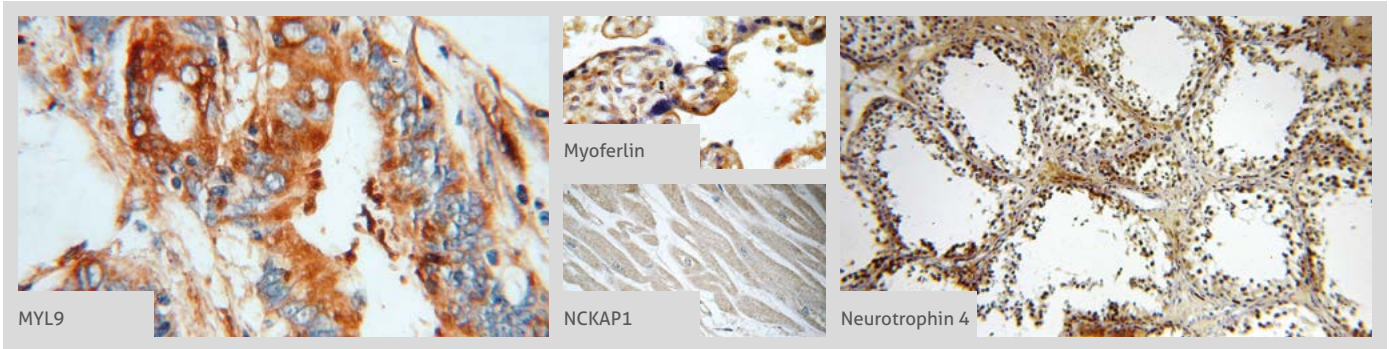
Antibody Name	Cat. No.	Type	Applications
LEPR	20966-1-AP	Rabbit Poly	ELISA, FC, IF, IHC, IP, WB
LGI1	12483-1-AP	Rabbit Poly	ELISA, WB
LGI3	21919-1-AP	Rabbit Poly	ELISA, FC, IF, IHC, WB
LHX5	21567-1-AP	Rabbit Poly	ELISA, WB
LIMK1	19699-1-AP	Rabbit Poly	ELISA, IF, IHC, IP, WB
LIMK2	12350-1-AP	Rabbit Poly	ELISA, WB
LIN28	26 11724-1-AP	Rabbit Poly	ELISA, IF, IHC, IP, WB
Lin28A-specific	2 16177-1-AP	Rabbit Poly	ELISA, IHC, WB
LIN7B	12732-1-AP	Rabbit Poly	ELISA, WB
LIN7C	14656-1-AP	Rabbit Poly	ELISA, WB
LINGO1	19097-1-AP	Rabbit Poly	ELISA, FC, WB
LMX1B	18278-1-AP	Rabbit Poly	ELISA, IF, WB
LPHN3	20045-1-AP	Rabbit Poly	ELISA, FC, IP, WB
LRAT	12815-1-AP	Rabbit Poly	ELISA, WB
LRP2-Specific	19700-1-AP	Rabbit Poly	ELISA, FC, IHC, WB
LRRTM1	14288-1-AP	Rabbit Poly	ELISA, IHC, WB
LRRTM4	16976-1-AP	Rabbit Poly	ELISA
LSAMP	13600-1-AP	Rabbit Poly	ELISA, WB
LTBP1	22065-1-AP	Rabbit Poly	ELISA, IHC, WB
LTBP2	 2 17708-1-AP	Rabbit Poly	ELISA, IHC, WB
Lumican	10677-1-AP	Rabbit Poly	ELISA, WB
LZIC	14543-1-AP	Rabbit Poly	ELISA, WB
LZTS1	20878-1-AP	Rabbit Poly	ELISA, IF, IP, WB
MAGI1	55048-1-AP	Rabbit Poly	ELISA, WB
MAGOH	4 12347-1-AP	Rabbit Poly	ELISA, IHC, IP, WB
MAOA	5 10539-1-AP	Rabbit Poly	ELISA, IHC, IP, WB
MAP1B	2 21633-1-AP	Rabbit Poly	ELISA, FC, IF, IHC, WB
MAP1S	 15695-1-AP	Rabbit Poly	ELISA, IF, IHC, IP, WB
MAP2	16 17490-1-AP	Rabbit Poly	ELISA, FC, IF, IHC, IP, WB
MAPK7	10036-2-AP	Rabbit Poly	ELISA, WB
MAPK7	11164-1-AP	Rabbit Poly	ELISA, WB
Marcks	6 10004-2-Ig	Rabbit Poly	ELISA, IF, IHC, IP, WB
MARK2	15492-1-AP	Rabbit Poly	ELISA, IHC, IP, WB
MARK3	12932-1-AP	Rabbit Poly	ELISA, IP, WB
MARK4	20174-1-AP	Rabbit Poly	ELISA, IHC, WB
MATR3	12202-2-AP	Rabbit Poly	ELISA, IF, IP, WB
MCCC1	14861-1-AP	Rabbit Poly	ELISA, IHC, IP, WB
MEF2A	12382-1-AP	Rabbit Poly	ELISA, WB
MEF2C	15 10056-1-AP	Rabbit Poly	ELISA, IF, IHC, IP, WB

Antibody Name	Cat. No.	Type	Applications
MEF2C	16953-1-AP	Rabbit Poly	ELISA, WB
MEF2C	18290-1-AP	Rabbit Poly	ELISA, IHC, WB
MEF2C	18291-1-AP	Rabbit Poly	ELISA, IHC, WB
MEF2C	20326-1-AP	Rabbit Poly	ELISA, IHC, WB
MEF2C-Specific	18293-1-AP	Rabbit Poly	ELISA, IHC
MEIS2	11550-1-AP	Rabbit Poly	ELISA, IHC, WB
MEIS3	12775-1-AP	Rabbit Poly	ELISA, WB
Melanophilin	6 10338-1-AP	Rabbit Poly	ELISA, FC, IF, IHC, IP, WB
Melanophilin	66092-1-Ig	Mouse Mono	ELISA, IF, IHC, WB
MFN1	9 13798-1-AP	Rabbit Poly	ELISA, IHC, WB
MFN2	10 12186-1-AP	Rabbit Poly	ELISA, IF, IHC, IP, WB
MGLL	14986-1-AP	Rabbit Poly	ELISA, IHC, IP, WB
mGluR1	19955-1-AP	Rabbit Poly	ELISA, FC, IF, IHC, WB
mGluR2	19956-1-AP	Rabbit Poly	ELISA, FC, IHC, WB
Midkine	 11009-1-AP	Rabbit Poly	ELISA, IF, IHC
MINK1	13137-1-AP	Rabbit Poly	ELISA, IHC, IP, WB
MIP	17977-1-AP	Rabbit Poly	ELISA, WB
MITF	3 13092-1-AP	Rabbit Poly	ELISA, FC, IP, WB
MKRN2	12238-1-AP	Rabbit Poly	ELISA, WB
MOG	3 12690-1-AP	Rabbit Poly	ELISA, Inhibition Assay, WB
MOXD1	11545-1-AP	Rabbit Poly	ELISA, WB
MPP1	14715-1-AP	Rabbit Poly	ELISA, WB
MPP5	8 17710-1-AP	Rabbit Poly	ELISA, IF, IHC, IP, WB
MPPED2	13270-1-AP	Rabbit Poly	ELISA, IF, IHC, WB
MPZ, PO	5 10572-1-AP	Rabbit Poly	ELISA, IF, IHC, WB
MRAS	14213-1-AP	Rabbit Poly	ELISA, IHC, WB
MSI2	2 10770-1-AP	Rabbit Poly	ELISA, IHC, WB
MT3	12179-1-AP	Rabbit Poly	ELISA, IHC
MTPN	13508-1-AP	Rabbit Poly	ELISA, IF, IHC, WB
mu Crystallin	12495-1-AP	Rabbit Poly	ELISA, IHC, WB
MUPCDH	25619-1-AP	Rabbit Poly	ELISA, IHC, WB
MYBPC1	22900-1-AP	Rabbit Poly	ELISA, IHC, WB
MYBPC3	19977-1-AP	Rabbit Poly	ELISA, WB
Myelin basic protein	2 10458-1-AP	Rabbit Poly	ELISA, IHC, WB
MYH2-specific	55069-1-AP	Rabbit Poly	ELISA, IHC, WB
MYH3	22287-1-AP	Rabbit Poly	ELISA, IP, WB
MYH4-Specific	5 20140-1-AP	Rabbit Poly	ELISA, IHC, WB
MYH6	22281-1-AP	Rabbit Poly	ELISA, IF, IHC, WB

00 This number shows the amount of times our antibody has been cited in a publication.

MYH7-specific
→ neuritin-specific

More validation images available on our website. 

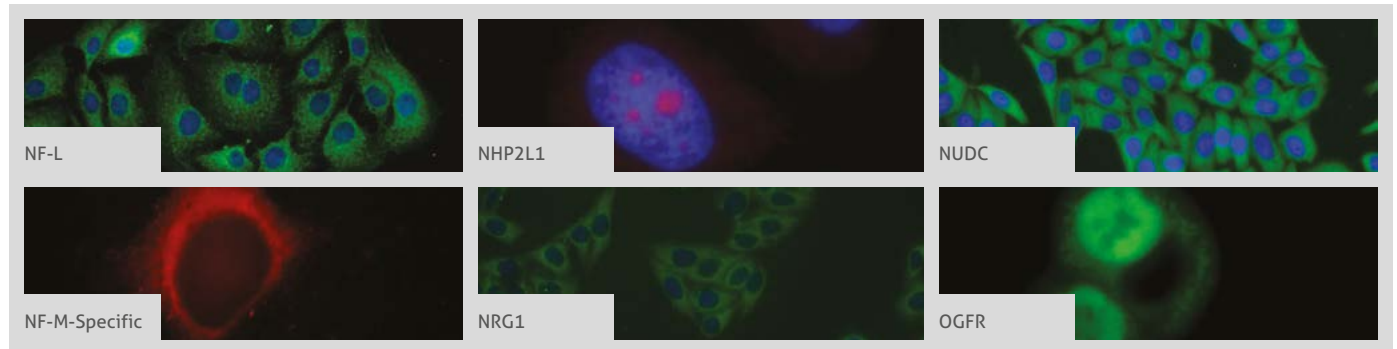


Antibody Name	Cat. No.	Type	Applications
MYH7-specific	22280-1-AP	Rabbit Poly	ELISA, IHC, IP, WB
MYL1	15814-1-AP	Rabbit Poly	ELISA, WB
MYL12A	2 16287-1-AP	Rabbit Poly	ELISA, IHC, WB
MYL12B	2 10324-1-AP	Rabbit Poly	ELISA, IF, IHC, WB
MYL3	10913-1-AP	Rabbit Poly	ELISA, IHC, IP, WB
MYL4	13229-1-AP	Rabbit Poly	ELISA, WB
MYL5	14249-1-AP	Rabbit Poly	ELISA, WB
MYL7	17283-1-AP	Rabbit Poly	ELISA, IF, IHC, IP, WB
MYL9	 15354-1-AP	Rabbit Poly	ELISA, IF, IHC, WB
MYLK	21642-1-AP	Rabbit Poly	ELISA, IF, WB
MYLK2	21173-1-AP	Rabbit Poly	ELISA, WB
MYLK3	21527-1-AP	Rabbit Poly	ELISA, IHC, WB
MYLK4	24309-1-AP	Rabbit Poly	ELISA, IHC, IP, WB
MYLPF	16052-1-AP	Rabbit Poly	ELISA, IHC, WB
MYO18A	3 14611-1-AP	Rabbit Poly	ELISA, FC, IP, WB
MYO19	23906-1-AP	Rabbit Poly	ELISA, IF, WB
MYO7A	20720-1-AP	Rabbit Poly	ELISA, IF, WB
MYO7B	14467-1-AP	Rabbit Poly	ELISA, IHC
Myocilin	14238-1-AP	Rabbit Poly	ELISA, IP, WB
Myoferlin	 19548-1-AP	Rabbit Poly	ELISA, FC, IF, IHC, WB
MYOM1-Specific	20360-1-AP	Rabbit Poly	ELISA, IHC, WB
MYOM3	17692-1-AP	Rabbit Poly	ELISA, IHC, IP, WB
Myosin Light Chain 2	42 10906-1-AP	Rabbit Poly	ELISA, FC, IF, IHC, IP, WB
Myosin Light Chain 2	60229-1-Ig	Mouse Mono	ELISA, IF, IHC, WB
MYOT	10731-1-AP	Rabbit Poly	ELISA, IHC, WB
MYPN-Specific	16180-1-AP	Rabbit Poly	ELISA, IF, IHC, WB
NAB2	19601-1-AP	Rabbit Poly	ELISA, IHC, IP, WB
NALP3	19771-1-AP	Rabbit Poly	ELISA, IF, IHC, WB
NANOG	9 14295-1-AP	Rabbit Poly	ELISA, IF, IHC, IP, WB
NBAS	4 14683-1-AP	Rabbit Poly	ELISA, WB

Antibody Name	Cat. No.	Type	Applications
N-cadherin	23 13769-1-AP	Rabbit Poly	ELISA, IF, IHC, WB
N-cadherin	22018-1-AP	Rabbit Poly	ELISA, FC, IHC, IP, WB
NCALD	2 12925-1-AP	Rabbit Poly	ELISA, IHC, WB
NCALD	66088-1-Ig	Mouse Mono	ELISA, IHC, WB
NCAM1/CD56	5 14255-1-AP	Rabbit Poly	ELISA, FC, IF, IHC, WB
NCAM1/CD56	60238-1-Ig	Mouse Mono	ELISA, IHC, WB
NCAM2	13850-1-AP	Rabbit Poly	ELISA, IHC, IP, WB
NCKAP1	 2 12140-1-AP	Rabbit Poly	ELISA, IHC, WB
NCS1	2 10506-2-AP	Rabbit Poly	ELISA, IP, WB
NDE1	12 10233-1-AP	Rabbit Poly	ELISA, IF, IHC, IP, WB
NDEL1	2 17262-1-AP	Rabbit Poly	ELISA, IF, IP, WB
NDRG2	12015-1-AP	Rabbit Poly	ELISA, IP, WB
NDRG4	12184-1-AP	Rabbit Poly	ELISA, IF, IHC, WB
NDUFV1	6 11238-1-AP	Rabbit Poly	ELISA, IHC, IP, WB
NEB-Specific	19706-1-AP	Rabbit Poly	ELISA, IHC, WB
NELF	12244-1-AP	Rabbit Poly	ELISA, IHC, WB
NELL2	11268-1-AP	Rabbit Poly	ELISA, IHC, WB
NENF	60131-1-Ig	Mouse Mono	ELISA, IHC, WB
Nestin	6 19483-1-AP	Rabbit Poly	ELISA, IF, IHC, WB
Netrin G1	12910-2-AP	Rabbit Poly	ELISA, WB
NEU4	7 12995-1-AP	Rabbit Poly	ELISA, IF, IHC, IP, WB
NeuN	23060-1-AP	Rabbit Poly	ELISA, IHC, WB
NEURL	18898-1-AP	Rabbit Poly	ELISA, IP, WB
NEUROD1	12081-1-AP	Rabbit Poly	ELISA, IHC, IP, WB
Neurogranin	10440-1-AP	Rabbit Poly	ELISA, IHC, IP, WB
Neurokinin -1 receptor	2 17942-1-AP	Rabbit Poly	ELISA, WB
Neuropilin 1	2 60067-1-Ig	Mouse Mono	ELISA, IF, IHC, WB
Neuroserpin	12558-1-AP	Rabbit Poly	ELISA, WB
Neurotrophin 4	 12297-1-AP	Rabbit Poly	ELISA, IF, IHC, IP, WB
neuritin-Specific	19709-1-AP	Rabbit Poly	ELISA, IHC, WB

00 This number shows the amount of times our antibody has been cited in a publication.

More validation images available on our website.



Antibody Name	Cat. No.	Type	Applications
NF-H	6 18934-1-AP	Rabbit Poly	ELISA, IHC, WB
NF-H	21471-1-AP	Rabbit Poly	ELISA, IHC, WB
NFIA	11750-1-AP	Rabbit Poly	ELISA, IHC, IP, WB
NFIL3	11773-1-AP	Rabbit Poly	ELISA, IF, IP, WB
NFKB1	15 14220-1-AP	Rabbit Poly	ELISA, IF, IP, WB
NFKB1	23576-1-AP	Rabbit Poly	ELISA, IF, IHC, WB
NFKB1, p105, p50-Specific	15506-1-AP	Rabbit Poly	ELISA, WB
NF-L	12998-1-AP	Rabbit Poly	ELISA, IF, IHC, IP, WB
NF-L	60189-1-Ig	Mouse Mono	ELISA, IHC, WB
NF-M-Specific	20664-1-AP	Rabbit Poly	ELISA, IF, IHC, IP, WB
NGB	13499-1-AP	Rabbit Poly	ELISA, IHC, WB
NGRN	14885-1-AP	Rabbit Poly	ELISA, IHC, WB
NHP2L1	15802-1-AP	Rabbit Poly	ELISA, IF, IHC, WB
Nicastrin	14071-1-AP	Rabbit Poly	ELISA, IF, WB
NINJ2	14085-1-AP	Rabbit Poly	ELISA, WB
NKX2-2	13013-1-AP	Rabbit Poly	ELISA, IF, WB
NKX2-5	13921-1-AP	Rabbit Poly	ELISA, WB
NLGN4Y	13489-1-AP	Rabbit Poly	ELISA, WB
NMDAR2A	2 19953-1-AP	Rabbit Poly	ELISA, FC, IF, WB
NMUR1	14619-1-AP	Rabbit Poly	ELISA, FC, IHC, WB
nNOS	18984-1-AP	Rabbit Poly	ELISA, IHC
NOL3	10846-2-AP	Rabbit Poly	ELISA, IF, IHC, WB
NOP56	18181-1-AP	Rabbit Poly	ELISA, WB
NOTCH1	3 20687-1-AP	Rabbit Poly	ELISA, IF, IHC, IP, WB
Notch1	5 10062-2-AP	Rabbit Poly	ELISA, IP, WB
NOVA2	55002-1-AP	Rabbit Poly	ELISA, WB
NPAS1	13701-1-AP	Rabbit Poly	ELISA, IHC, WB
NPTX1	20656-1-AP	Rabbit Poly	ELISA, IF, WB
NPTX2	2 10889-1-AP	Rabbit Poly	ELISA, ICC, IHC, IP, WB
NR1H2	6 14278-1-AP	Rabbit Poly	ELISA, IF, IP, WB
NR1H3	20 14351-1-AP	Rabbit Poly	ELISA, IF, WB

Antibody Name	Cat. No.	Type	Applications
NR1H3	60134-1-Ig	Mouse Mono	ELISA, IF, WB
NR2B	2 19954-1-AP	Rabbit Poly	ELISA, FC, IF, WB
NR2B	3 21920-1-AP	Rabbit Poly	ELISA, FC, IF, IHC, IP, WB
NR2E3	2 14246-1-AP	Rabbit Poly	ELISA, FC, IF, IHC, WB
NRF1	3 12482-1-AP	Rabbit Poly	ChIP, ELISA, IF, IP, WB
NRG1	10527-1-AP	Rabbit Poly	ELISA, IF, IHC, IP, WB
NRXN1	55051-1-AP	Rabbit Poly	ELISA, WB
NSE	10149-1-AP	Rabbit Poly	ELISA, IHC, IP, WB
NSE	55235-1-AP	Rabbit Poly	ELISA, IHC, WB
NSE	66150-1-Ig	Mouse Mono	ELISA, IF, IHC, WB
NTF3	18084-1-AP	Rabbit Poly	ELISA, IF, IHC, IP, WB
NTM	14373-1-AP	Rabbit Poly	ELISA, WB
NUDC	2 10681-1-AP	Rabbit Poly	ELISA, IF, IHC, IP, WB
NUMB	3 18701-1-AP	Rabbit Poly	ELISA, FC, IF, IHC, WB
NUMB	11876-1-AP	Rabbit Poly	ELISA, WB
NUMB	55321-1-AP	Rabbit Poly	ELISA, WB
NUMB	60137-1-Ig	Mouse Mono	ELISA, IF, WB
Nurr1/NR4A2	2 10975-2-AP	Rabbit Poly	ELISA, IHC, WB
NUS1	15986-1-AP	Rabbit Poly	ELISA, WB
NXPH1	13809-1-AP	Rabbit Poly	ELISA, IHC,
OCRL	17695-1-AP	Rabbit Poly	ELISA, IHC, IP, WB
OCT4	18 11263-1-AP	Rabbit Poly	ELISA, IF, IHC, WB
OCT4	60242-1-Ig	Mouse Mono	ELISA, IHC, WB
Oct6-Specific	18997-1-AP	Rabbit Poly	ELISA, WB
OGFR	11177-1-AP	Rabbit Poly	ELISA, FC, IF, IHC, IP, WB
OLFM1	10079-1-AP	Rabbit Poly	ELISA, IHC
OLFM3	12596-1-AP	Rabbit Poly	ELISA, IF, IHC, WB
OLIG2	3 13999-1-AP	Rabbit Poly	ELISA, IF, IHC, IP, WB
Oligophrenin 1	3 11076-1-AP	Rabbit Poly	ELISA, IHC, IP, WB
Oligophrenin 1	17445-1-AP	Rabbit Poly	ELISA, IHC, IP, WB

00 This number shows the amount of times our antibody has been cited in a publication.

Alzheimer's Disease Prevention: It's In The Blood

By Ashley Juavinett

A breakthrough relating to Alzheimer's disease prediction has made big news in the mainstream media in the last few weeks. The paper at the center of the excitement was published July 3 in the journal *Alzheimer's and Dementia* and describes potential, blood-based markers for the possible early detection of Alzheimer's disease. Proteintech's Neuroscience Guest Blogger Ashley Juavinett has covered the story, taking a look at previous work leading up to July's paper, and what the implications of the work might be...

For decades, clinicians have known about two major biomarkers for Alzheimer's Disease (AD): beta-amyloid plaques and tau tangles. However, these markers are usually only found after behavioral symptoms are already evident and, therefore, when the disease has progressed significantly. It means these markers are not particularly useful for prognosis. Encouragingly, an international team of scientists has identified a set of proteins found in blood plasma that may be highly predictive of AD onset, opening exciting possibilities for early AD prognosis and preventative treatment.

Rather than subject patients to repeated brain scans or extract cerebrospinal fluid samples (the two methods currently used to look for biomarkers), the academic and industry-affiliated research team has been exploring a safer and less costly way to collect physiological information about AD patients through blood samples. A few years ago, they validated their technique of measuring blood plasma proteins with proteomics and correlated those measurements with in vivo structural changes assessed with MRI. They found that an increase in Clusterin, a known chaperone of amyloid proteins, was associated with progression of AD (Thambisetty et al., 2010).

In their earlier paper, the team extended their findings to both humans and mice, which allowed them to ask more detailed questions about the exact function of Clusterin in AD. The study revealed that transgenic model AD mice showed much more plasma clusterin than wild-type. In a highly publicized follow-up paper that was released last week, the authors expanded their subject pool and added predictive modeling (Hye et al., 2014). The crucial step in finding pre-disease markers is identifying individuals that are likely to develop the disease. For this purpose, the researchers recruited a group of participants with Mild Cognitive Impairment (MCI), in addition to an AD group (AD) and a healthy control group. One of the strengths of this study was the sheer number of subjects: 1148 in total.

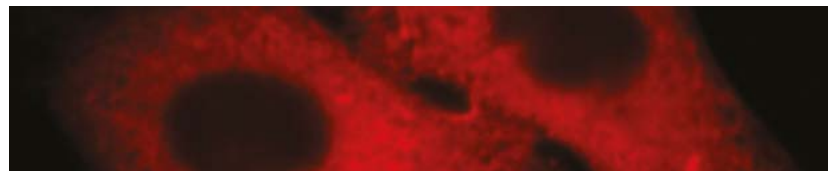
The researchers measured two different Alzheimer's endophenotypes – hippocampal/cortical degeneration and cognitive decline – to investigate which proteins in the blood plasma could predict differences in these outcomes. Replicating their prior work, they found a set of proteins (including Clusterin) that correlated with both anatomical and behavioral measures. In addition, another protein known as RANTES, which has a role in recruiting leukocytes to inflammatory tissue, was related to cortical atrophy in the MCI patients. Still, the key question was, would these differences in blood proteins predict transition from MCI to AD?

In order to determine this, they used a common machine-learning algorithm known as a Naïve Bayes classifier. To do this analysis, you first train the classifier on all of the information (blood plasma protein levels) from 75% of the data, and then see if it can predict the outcome (in this case, conversion to AD) for the other 25% of the data. The classifier gives you a set of values that – with certain accuracy – mark the border between the two groups, AD and control.

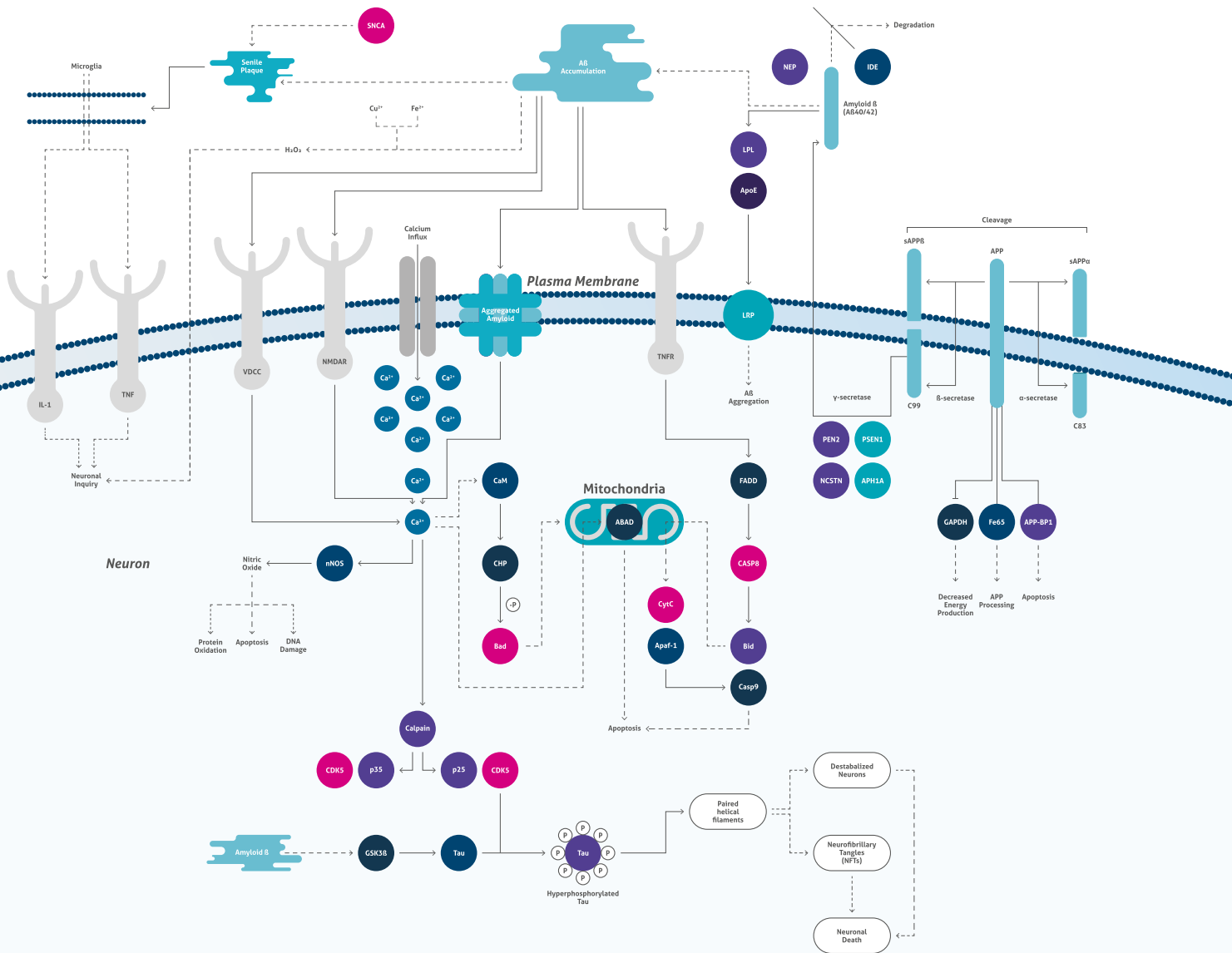
Remarkably, the model performed very well with data from just 10 different proteins, with 87% accuracy. In addition to Clusterin and RANTES, Transthyretin (TTR), Cystatin C, A1AcidG, ICAM1, CC4, PEDF, A1AT, and ApoC3 – most of which have antibodies available from Proteintech® – all had predictive power. More research is required to figure out exactly how this new knowledge can be implemented in the wider clinical setting, but the ramifications of it are extremely promising: a broader set of protein targets that may collectively be involved in early AD progression.

Speaking to the BBC, senior author Simon Lovestone stated, "The next step will be to validate our findings in further sample sets, to see if we can improve accuracy and reduce the risk of misdiagnosis, and to develop a reliable test suitable to be used by doctors." So while they aren't quite up to par for using in the clinic at the moment – largely because they may lead to troubling false positives – the findings are a huge step forward for predictive analytics in AD. In the words of one of the Alzheimer's experts interviewed by the BBC, these findings herald "A step towards making Alzheimer's a preventable disease."

You can place your order online, by email, or fax.



Immunofluorescent analysis of HepG2 cells, using ORM1 antibody (66097-1-Ig) at 1:25 dilution and Rhodamine-labeled goat anti-mouse IgG (red).



Alzheimer's Disease Signaling Pathway


Legend	
—	Association
→	Directly Activates
- - - - ->	Indirectly Activates
—	Inhibits
(P)	Phosphorylates

Alzheimer's disease (AD) is a chronic disorder that slowly destroys neurons and causes serious cognitive disability. AD is associated with senile plaques and neurofibrillary tangles (NFTs). Amyloid-beta, a major component of senile plaques, has various pathological effects on cell and organelle function. Extracellular amyloid-beta oligomers may activate caspases through activation of cell-surface death receptors. Alternatively, intracellular amyloid-beta may contribute to pathology by facilitating tau hyper-phosphorylation, disrupting mitochondria function and

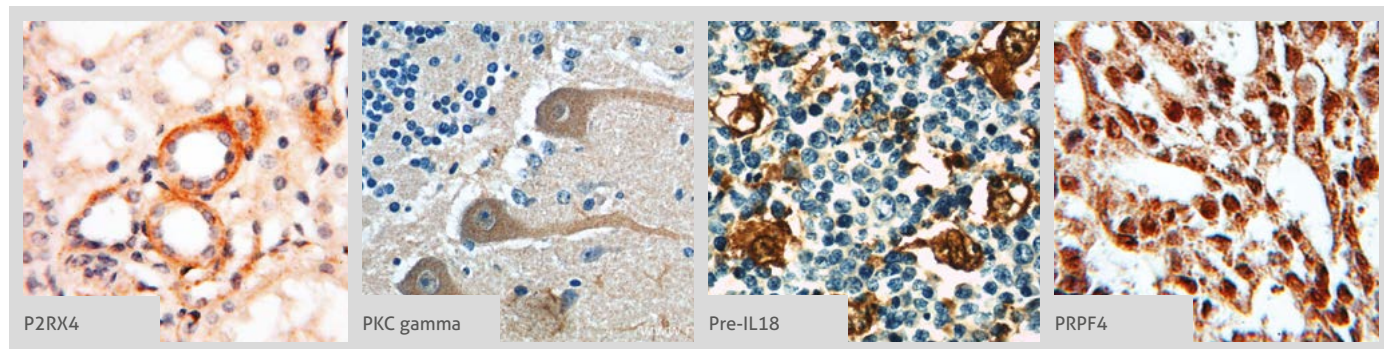
triggering calcium dysfunction. To date, genetic studies have revealed four genes that may be linked to autosomal dominant or familial early onset AD (FAD). These four genes include: amyloid precursor protein (APP), presenilin 1 (PS1), presenilin 2 (PS2), and apolipoprotein E (ApoE). All mutations associated with APP and PS proteins can lead to an increase in the production of amyloid-beta peptides, specifically the more amyloidogenic form, amyloid-beta 42. FAD-linked PS1 mutation downregulates the unfolded protein response and leads to vulnerability to ER stress.

OPA3
 → PKC Gamma

Antibody Name	Cat. No.	Type	Applications
OPA3	3 15638-1-AP	Rabbit Poly	ELISA, IF, IHC, IP, WB
OPRL1	12970-1-AP	Rabbit Poly	ELISA, IF, IHC, IP, WB
OPTN	10 10837-1-AP	Rabbit Poly	ELISA, FC, IF, IHC, IP, WB
OPTN	60293-1-Ig	Mouse Mono	ELISA, IHC, WB
OSCP1	12598-1-AP	Rabbit Poly	ELISA, WB
OTOP1	24456-1-AP	Rabbit Poly	ELISA, WB
OTOP3	18819-1-AP	Rabbit Poly	ELISA, WB
Oxytocin Receptor	23045-1-AP	Rabbit Poly	ELISA, FC, IF, IHC, IP, WB
p150 glued	55182-1-AP	Rabbit Poly	ELISA, IF, IHC, WB
P2RX4	 13534-1-AP	Rabbit Poly	ELISA, FC, IF, IHC, IP, WB
P2RX5	19012-1-AP	Rabbit Poly	ELISA, FC, WB
P2RX7	2 11144-1-AP	Rabbit Poly	ELISA, FC, IF, IHC
P2RY13	20335-1-AP	Rabbit Poly	ELISA, FC, IHC, WB
p35	18346-1-AP	Rabbit Poly	ELISA, IP, WB
P53	69 10442-1-AP	Rabbit Poly	ELISA, IF, IHC, IP, WB
P53	60283-1-Ig	Mouse Mono	ELISA, IHC, IP, WB
P62/SQSTM1	51 18420-1-AP	Rabbit Poly	ELISA, FC, IF, IHC, IP, WB
P62/SQSTM1	2 66184-1-Ig	Mouse Mono	ELISA, IF, IHC, WB
P62/SQSTM1	55274-1-AP	Rabbit Poly	ELISA, IF, IHC, WB
p70S6K	5 14485-1-AP	Rabbit Poly	ELISA, FC, IF, IHC, IP, WB
p75NTR	55014-1-AP	Rabbit Poly	ELISA, FC, IF, IHC, IP, WB
PABPC1, PABP	10970-1-AP	Rabbit Poly	ELISA, FC, IF, IHC, IP, WB
PACSIN1	13219-1-AP	Rabbit Poly	ELISA, IF, IHC, WB
PACSIN2	2 10518-2-AP	Rabbit Poly	ELISA, IF, IHC, IP, WB
PACSIN3	10639-1-AP	Rabbit Poly	ELISA, FC, IF, IHC, WB
PAFAH1B3	10634-1-AP	Rabbit Poly	ELISA, WB
PAFAH1B3	20564-1-AP	Rabbit Poly	ELISA, IF, IHC, WB
PAK1	21401-1-AP	Rabbit Poly	ELISA, IF, IHC, IP, WB
PAK1	51137-1-AP	Rabbit Poly	ELISA, IF, IHC, WB
PAK6	13539-1-AP	Rabbit Poly	ELISA, IF, IHC, IP, WB
Palladin	37 10853-1-AP	Rabbit Poly	ELISA, FC, IF, IHC, IP, WB
Palladin -Specific	16179-1-AP	Rabbit Poly	ELISA, IP, WB
PARD3	5 11085-1-AP	Rabbit Poly	ELISA, FC, IF, IHC, IP, WB
PARK7, DJ-1	3 11681-1-AP	Rabbit Poly	ELISA, IF, IHC, IP, WB
PAX3	21386-1-AP	Rabbit Poly	ELISA, IP, WB
PAX3	51036-2-AP	Rabbit Poly	ELISA, WB

Antibody Name	Cat. No.	Type	Applications
PAX6	7 12323-1-AP	Rabbit Poly	ELISA, FC, IF, IHC, WB
PAX7	20570-1-AP	Rabbit Poly	ELISA, WB
P-cadherin	13773-1-AP	Rabbit Poly	ELISA, FC, IF, IHC, IP, WB
PDCL	16057-1-AP	Rabbit Poly	ELISA, IHC, WB
PDE6A	2 21200-1-AP	Rabbit Poly	ELISA, IF, IHC, WB
PDE6B	10353-1-AP	Rabbit Poly	ELISA, IHC
PDE6B	22063-1-AP	Rabbit Poly	ELISA, IF, IP, WB
PDE6C	55183-1-AP	Rabbit Poly	ELISA, WB
PDLIM1/CLP36	5 11674-1-AP	Rabbit Poly	ELISA, FC, IF, IHC, IP, WB
PDLIM3	13199-2-AP	Rabbit Poly	ELISA, WB
PDLIM5	2 10530-1-AP	Rabbit Poly	ELISA, IHC, IP, WB
PER1	13463-1-AP	Rabbit Poly	ELISA, IF, WB
PER2	4 20359-1-AP	Rabbit Poly	ELISA, IP, WB
PER3	12550-1-AP	Rabbit Poly	ELISA, IF, IHC, WB
Peripherin	17399-1-AP	Rabbit Poly	ELISA, IHC, WB
persephin-Specific	19713-1-AP	Rabbit Poly	ELISA, IF, IHC, WB
PEX7	20614-1-AP	Rabbit Poly	ELISA, WB
PFN2	60094-2-Ig	Mouse Mono	ELISA, IHC, WB
PHACTR1	23446-1-AP	Rabbit Poly	ELISA, WB
PHACTR4	13408-1-AP	Rabbit Poly	ELISA, IF, WB
PHF5A	15554-1-AP	Rabbit Poly	ELISA, IP, WB
PHGDH	3 14719-1-AP	Rabbit Poly	ELISA, IHC, IP, WB
PHKG1	16743-1-AP	Rabbit Poly	ELISA, IP, WB
PHKG2	15109-1-AP	Rabbit Poly	ELISA, IHC, IF, WB
phospho (403/404)-TDP43	66079-1-Ig	Mouse Mono	ELISA, WB
phospho (409/410)-TDP43	5 22309-1-AP	Rabbit Poly	ELISA, IF, IHC, WB
Phospholemmann/FXYD1	12 13721-1-AP	Rabbit Poly	ELISA, IHC, IP, WB
PHOX2A	25804-1-AP	Rabbit Poly	ELISA, IF, WB
PHOX2B	25276-1-AP	Rabbit Poly	ELISA, IF, IHC, WB
PHYH	12858-1-AP	Rabbit Poly	ELISA, IHC, WB
PHYHIP	16984-1-AP	Rabbit Poly	ELISA, WB
PHYHIPL	16937-1-AP	Rabbit Poly	ELISA, WB
PIAS3	13486-1-AP	Rabbit Poly	ELISA, IF, IHC, WB
PICK1	3 10983-2-AP	Rabbit Poly	ELISA, IF, IHC, IP, WB
PIGF	10642-1-AP	Rabbit Poly	ELISA, IF, IHC, IP, WB
Pikachurin	14578-1-AP	Rabbit Poly	ELISA, IF, WB
Pinin	18266-1-AP	Rabbit Poly	ELISA, IF, IHC, IP, WB
PKC gamma	 14364-1-AP	Rabbit Poly	ELISA, FC, IF, IHC, IP, WB

More validation images available on our website.



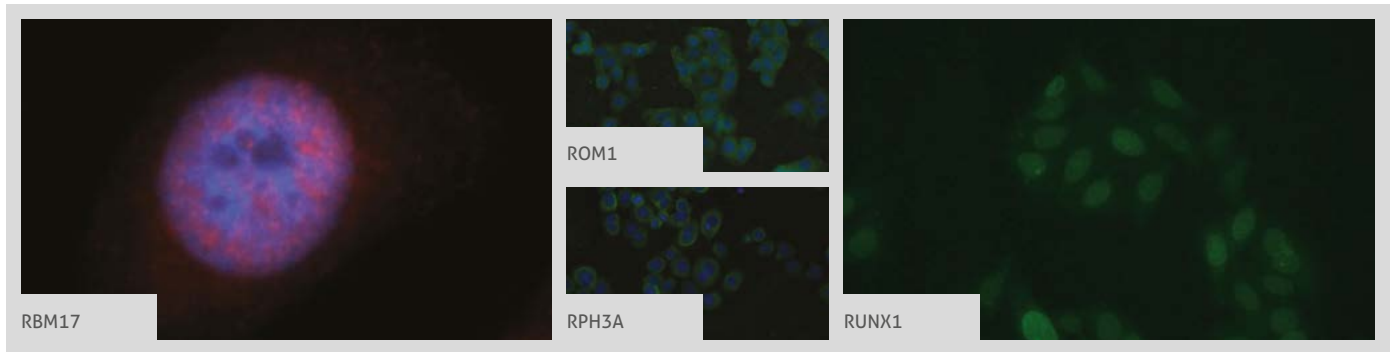
Antibody Name	Cat. No.	Type	Applications
Placental lactogen	10178-1-AP	Rabbit Poly	ELISA, WB
Placental lactogen	16326-1-AP	Rabbit Poly	ELISA, IHC, WB
Placental lactogen	55236-1-AP	Rabbit Poly	ELISA, IHC, WB
Plasmolipin	14868-1-AP	Rabbit Poly	ELISA, WB
PLDN	11 10891-2-AP	Rabbit Poly	ELISA, IF, IHC, IP, WB
Plexin B2	10602-1-AP	Rabbit Poly	ELISA, IF, IP, WB
PLP2	21482-1-AP	Rabbit Poly	ELISA, IF, IHC, WB
PLRG1	11914-1-AP	Rabbit Poly	ELISA, IP, WB
PNCK	13712-1-AP	Rabbit Poly	ELISA, IHC, WB
PNMA1	13631-1-AP	Rabbit Poly	ELISA, IHC, IP, WB
PNPLA6	14261-1-AP	Rabbit Poly	ELISA, IF, IP, WB
POU3F3-Specific	18999-1-AP	Rabbit Poly	ELISA, IHC, WB
PPAR gamma	23 16643-1-AP	Rabbit Poly	ELISA, IF, IHC, IP, WB
PPAR gamma	22061-1-AP	Rabbit Poly	ELISA, IF, IHC, WB
PPAR gamma	60127-1-Ig	Mouse Mono	ELISA, IHC, WB
PPARA	13 15540-1-AP	Rabbit Poly	ELISA, IHC, IP, WB
PPIH	11651-1-AP	Rabbit Poly	ELISA, IF, IHC, WB
PPIL1	15144-1-AP	Rabbit Poly	ELISA, IF, IHC, IP, WB
PPIL3	15671-1-AP	Rabbit Poly	ELISA, IHC
PPP1R8	16115-1-AP	Rabbit Poly	ELISA, IF, IHC, WB
PPP1R9A	18801-1-AP	Rabbit Poly	ELISA, IF, WB
PPP1R9B	55129-1-AP	Rabbit Poly	ELISA, IHC, IP, WB
PPP2CA	3 13482-1-AP	Rabbit Poly	ELISA, IF, IHC, IP, WB
PPP2R2B	13123-1-AP	Rabbit Poly	ELISA, IF, IP, WB
PPT1	10887-1-AP	Rabbit Poly	ELISA, IHC
PPWD1	17106-1-AP	Rabbit Poly	ELISA, WB
PPYR1	21654-1-AP	Rabbit Poly	ELISA, IHC
Pre-IL18	3 10663-1-AP	Rabbit Poly	ELISA, IF, IHC, IP, WB
Pre-IL18	60070-1-Ig	Mouse Mono	ELISA, IF, WB
Presenilin -1-Specific	16163-1-AP	Rabbit Poly	ELISA, IP, WB

Antibody Name	Cat. No.	Type	Applications
PRKG1	21646-1-AP	Rabbit Poly	ELISA, IP, WB
PRKG2	55138-1-AP	Rabbit Poly	ELISA, IF, IHC, IP, WB
Proenkephalin-A	13531-1-AP	Rabbit Poly	ELISA, IHC, WB
Profilin 1	3 11680-1-AP	Rabbit Poly	ELISA, IHC, WB
PROK2	24906-1-AP	Rabbit Poly	ELISA, IHC
ProSAPiP1	24936-1-AP	Rabbit Poly	ELISA, WB
PROX1	4 11067-2-AP	Rabbit Poly	ChIP, ELISA, FC, IF, IHC, WB
PROX1	19554-1-AP	Rabbit Poly	ELISA, WB
PrP	12555-1-AP	Rabbit Poly	ELISA, FC, IHC, IP, WB
PRPF19	15414-1-AP	Rabbit Poly	ELISA, WB
PRPF3	2 10106-1-AP	Rabbit Poly	ELISA, IP, WB
PRPF38A	24946-1-AP	Rabbit Poly	ELISA, IF, WB
PRPF4	2 10728-1-AP	Rabbit Poly	ELISA, IHC, WB
PRPF40A	17392-1-AP	Rabbit Poly	ELISA, IP, WB
PRPF40B	16929-1-AP	Rabbit Poly	ELISA, IF, IP, WB
PRPF8	3 11171-1-AP	Rabbit Poly	ELISA, IP, WB
PRPH2	5 18109-1-AP	Rabbit Poly	ELISA, IF, IHC, WB
PSD95-Specific, DLG4	2 20665-1-AP	Rabbit Poly	ELISA, IHC, IP, WB
PSMC1	2 11196-1-AP	Rabbit Poly	ELISA, WB
PTBP2	55186-1-AP	Rabbit Poly	ELISA, WB
PTCH1	10 17520-1-AP	Rabbit Poly	ELISA, IHC, WB
PTEN	5 60300-1-Ig	Mouse Mono	ELISA, IF, IHC, WB
PTGDS	10754-2-AP	Rabbit Poly	ELISA, IHC, WB
PTN	2 10821-1-AP	Rabbit Poly	ELISA, IHC, WB
PTP1B	11334-1-AP	Rabbit Poly	ELISA, IF, IHC, IP, WB
PTPN5	14515-1-AP	Rabbit Poly	ELISA, IHC, WB
PTRPJ	55123-1-AP	Rabbit Poly	ELISA, IHC, WB
PTPRS	2 13008-1-AP	Rabbit Poly	ELISA, FC, IHC, IP, WB
Pyruvate Carboxylase	3 16588-1-AP	Rabbit Poly	ELISA, IF, IHC, IP, WB
QKI	13169-1-AP	Rabbit Poly	ELISA, IP, WB



00 This number shows the amount of times our antibody has been cited in a publication.

RAB27A
→ S100B

More validation images available on our website. 

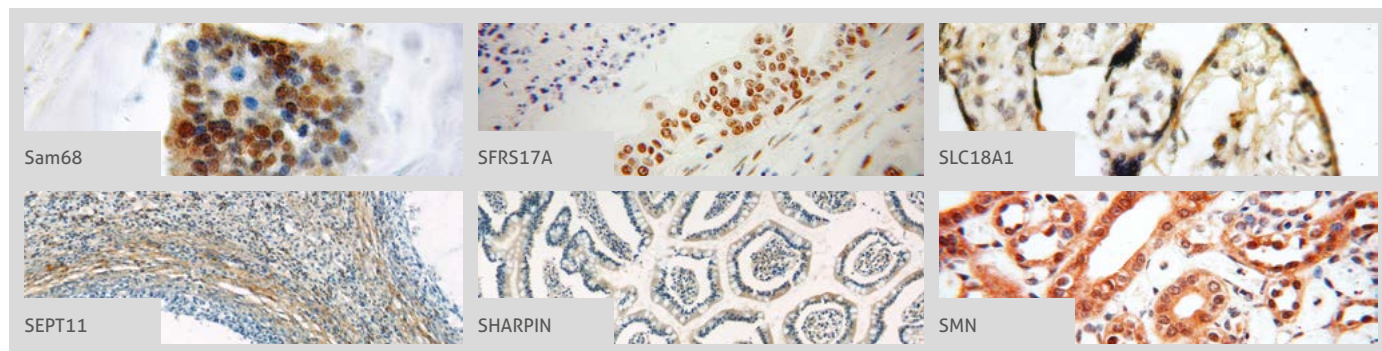


Antibody Name	Cat. No.	Type	Applications
RAB27A	8 17817-1-AP	Rabbit Poly	ELISA, IF, IHC, IP, WB
RAB27A	66058-1-Ig	Mouse Mono	ELISA, IF, IHC, WB
RAB27A-specific	16868-1-AP	Rabbit Poly	ELISA, IHC, WB
RAB3IL1	17827-1-AP	Rabbit Poly	ELISA, IF, WB
RAB3IP	8 12321-1-AP	Rabbit Poly	ELISA, IF, IHC, IP, WB
RAB4A	10347-1-AP	Rabbit Poly	ELISA, WB
RAB5A	3 11947-1-AP	Rabbit Poly	ELISA, IF, IHC, IP, WB
RAB5A-Specific	20228-1-AP	Rabbit Poly	ELISA, IF, IHC, IP, WB
RABAC1	10542-1-AP	Rabbit Poly	ELISA, IF, IHC, WB
RAI1	17084-1-AP	Rabbit Poly	ELISA, WB
RAPGEF5	12556-1-AP	Rabbit Poly	ELISA, WB
RAPSN	20453-1-AP	Rabbit Poly	ELISA, WB
RASGRP2	19745-1-AP	Rabbit Poly	ELISA, WB
RBM17	 13918-1-AP	Rabbit Poly	ELISA, IF, WB
RBM17	15374-1-AP	Rabbit Poly	ELISA, IP, WB
RBM22	22103-1-AP	Rabbit Poly	ELISA, WB
RBM28	16484-1-AP	Rabbit Poly	ELISA, IF, WB
RBP3	14352-1-AP	Rabbit Poly	ELISA, IHC, IP, WB
RCAN1	14869-1-AP	Rabbit Poly	ELISA, IHC, IP, WB
RCAN2	12900-1-AP	Rabbit Poly	ELISA, IHC, WB
RDH10	4 14644-1-AP	Rabbit Poly	ELISA, IF, IHC, IP, WB
RDH12	13289-3-AP	Rabbit Poly	ELISA, WB
Recoverin	3 10073-1-AP	Rabbit Poly	ELISA, IF, IHC, WB
REPS2	20699-1-AP	Rabbit Poly	ELISA, IF, WB
RFC2	2 10410-1-AP	Rabbit Poly	ELISA, IF, WB
RGMA	12387-1-AP	Rabbit Poly	ELISA, IP, WB
RGR	11904-1-AP	Rabbit Poly	ELISA, FC, IHC, IP, WB
RGS9	17970-1-AP	Rabbit Poly	ELISA, WB
RHEB	2 15924-1-AP	Rabbit Poly	ELISA, IHC, WB
RIM1	24576-1-AP	Rabbit Poly	ELISA, WB
RIM2-Specific	20093-1-AP	Rabbit Poly	ELISA, WB

Antibody Name	Cat. No.	Type	Applications
RIMBP2	15716-1-AP	Rabbit Poly	ELISA, IHC, WB
RIMS3	15088-1-AP	Rabbit Poly	ELISA, WB
RIMS4-Specific	20091-1-AP	Rabbit Poly	ELISA, WB
RIN1	16388-1-AP	Rabbit Poly	ELISA, IF, IP, WB
RKIP	10575-1-AP	Rabbit Poly	ELISA, IHC, WB
RLBP1	3 15356-1-AP	Rabbit Poly	ELISA, IHC, WB
RNF2	16031-1-AP	Rabbit Poly	ELISA, IP, WB
ROBO1-Specific	2 20219-1-AP	Rabbit Poly	ELISA, IP, WB
ROBO3	11982-1-AP	Rabbit Poly	ELISA, IHC, WB
ROBO3-Specific	20220-1-AP	Rabbit Poly	ELISA, IHC, WB
ROM1	21984-1-AP	Rabbit Poly	ELISA, IF, WB
RORA	2 10616-1-AP	Rabbit Poly	ELISA, WB
RORB	17635-1-AP	Rabbit Poly	ELISA, IHC, IP, WB
RORC	13205-1-AP	Rabbit Poly	ELISA, WB
RP2	14151-1-AP	Rabbit Poly	ELISA, FC, IHC, IP, WB
RPE65	17939-1-AP	Rabbit Poly	ELISA, WB
RPGR	16891-1-AP	Rabbit Poly	ELISA, IF, IHC, WB
RPGRIP1	13214-1-AP	Rabbit Poly	ELISA, WB
RPGRIP1L	4 55160-1-AP	Rabbit Poly	ELISA, IF, IHC, IP, WB
RPH3A	 11396-1-AP	Rabbit Poly	ELISA, IF, WB
RPH3AL	15297-1-AP	Rabbit Poly	ELISA, IP, WB
RRAS2	12530-1-AP	Rabbit Poly	ELISA, FC, IF, IHC, IP, WB
RSPO2	17781-1-AP	Rabbit Poly	ELISA, IHC, IP, WB
RSPO3	17193-1-AP	Rabbit Poly	ELISA, IHC, IP, WB
RTN4/NOGO	10740-1-AP	Rabbit Poly	ELISA, FC, IHC, WB
RTN4/NOGO	10950-1-AP	Rabbit Poly	ELISA, IF, IHC, WB
RUNX1	19555-1-AP	Rabbit Poly	ELISA, IP, WB
RUNX1	 25315-1-AP	Rabbit Poly	ELISA, IF, IP, WB
Ryanodine Receptor 2	19765-1-AP	Rabbit Poly	ELISA, IHC, WB
S100B	3 15146-1-AP	Rabbit Poly	ELISA, IF, IHC, WB

00 This number shows the amount of times our antibody has been cited in a publication.

More validation images available on our website.



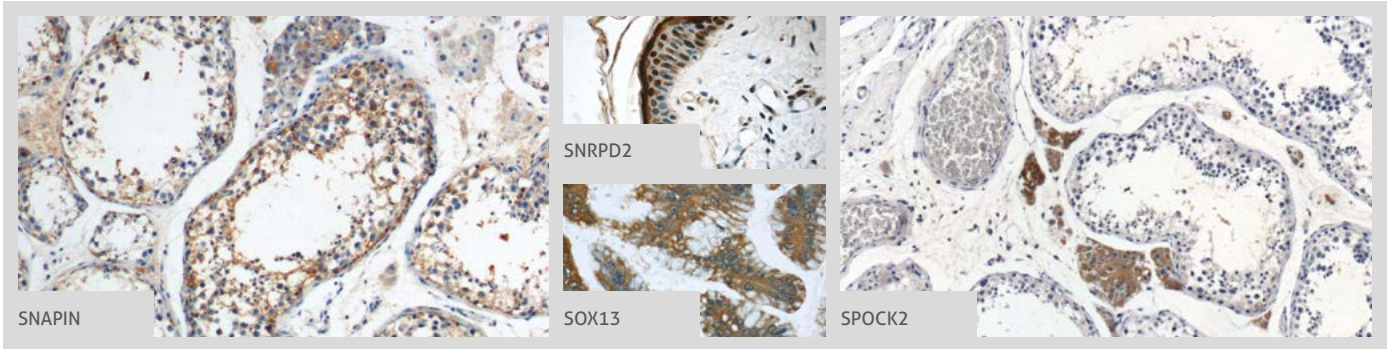
Antibody Name	Cat. No.	Type	Applications
S1PR5/EDG8	13874-1-AP	Rabbit Poly	ELISA, FC, WB
SAG	23546-1-AP	Rabbit Poly	ELISA, WB
Sam68	10222-1-AP	Rabbit Poly	ELISA, FC, IF, IHC, IP, WB
SAMD4A	17387-1-AP	Rabbit Poly	ELISA, IHC, IP, WB
SAP18	13841-1-AP	Rabbit Poly	ELISA, IF, IHC, IP, WB
SART1	22675-1-AP	Rabbit Poly	ELISA, IF, IP, WB
SCGN	14919-1-AP	Rabbit Poly	ELISA, IP, WB
SCN9A/ Nav1.7-Specific	20257-1-AP	Rabbit Poly	ELISA, IF, IHC, WB
SCNN1A	10924-2-AP	Rabbit Poly	ELISA, IHC, WB
SCNN1G	13943-1-AP	Rabbit Poly	ELISA, IHC, WB
SCUBE3	16773-1-AP	Rabbit Poly	ELISA, IHC, WB
SEC6	14703-1-AP	Rabbit Poly	ELISA, IF, IHC, WB
Sec8	11913-1-AP	Rabbit Poly	ELISA, IHC, IP, WB
Secretogranin V	10761-1-AP	Rabbit Poly	ELISA, IF, IHC, WB
SEMA3C	19242-1-AP	Rabbit Poly	ELISA, WB
SEMA3D	13029-1-AP	Rabbit Poly	ELISA, WB
SEMA4A	12288-2-AP	Rabbit Poly	ELISA, WB
SEMA4F	12474-1-AP	Rabbit Poly	ELISA, IP, WB
SEPT11	14672-1-AP	Rabbit Poly	ELISA, IF, IHC, IP, WB
SERPINE2	11303-1-AP	Rabbit Poly	ELISA, IHC, IP, WB
SET	55201-1-AP	Rabbit Poly	ELISA, IHC, WB
SF3A1	15858-1-AP	Rabbit Poly	ELISA, IF, IHC, IP, WB
SF3A2	15596-1-AP	Rabbit Poly	ELISA, IHC, WB
SF3A3	12070-1-AP	Rabbit Poly	ELISA, IF, IHC, IP, WB
SF3B2	10919-1-AP	Rabbit Poly	ELISA, IF, IHC, WB
SF3B3	14577-1-AP	Rabbit Poly	ELISA, IF, IHC, IP, WB
SF3B4	10482-1-AP	Rabbit Poly	ELISA, IHC, IP, WB
SF3B5	15525-1-AP	Rabbit Poly	ELISA, IF, WB
SF4	15614-1-AP	Rabbit Poly	ELISA, IF, IHC, WB
SFPQ	15585-1-AP	Rabbit Poly	ELISA, IF, IHC, WB



Antibody Name	Cat. No.	Type	Applications
SFRS17A	13441-1-AP	Rabbit Poly	ELISA, IF, IHC, IP, WB
SH3GL2	12435-1-AP	Rabbit Poly	ELISA, IHC, IP, WB
SH3GL3	13849-1-AP	Rabbit Poly	ELISA, WB
SHANK1	55059-1-AP	Rabbit Poly	ELISA, WB
SHARPIN	14626-1-AP	Rabbit Poly	ELISA, IF, IHC, IP, WB
SHC3	12436-1-AP	Rabbit Poly	ELISA, IHC, IP, WB
SHC4	12641-1-AP	Rabbit Poly	ELISA, IF, IHC, WB
SIAH1	13886-1-AP	Rabbit Poly	ELISA, WB
SIGLEC7	13939-1-AP	Rabbit Poly	ELISA, FC, IHC, WB
SIP1	21672-1-AP	Rabbit Poly	ELISA, IP, WB
SIRP alpha	14482-1-AP	Rabbit Poly	ELISA, WB
SIRP BETA 1	11811-1-AP	Rabbit Poly	ELISA, IHC, WB
SIRT1	13161-1-AP	Rabbit Poly	ELISA, IF, IHC, IP, WB
SIRT1	60303-1-Ig	Mouse Mono	ELISA, IF, IHC, IP, WB
SKIV2L2	12719-2-AP	Rabbit Poly	ELISA, IP, WB
SLC18A1	20340-1-AP	Rabbit Poly	ELISA, IHC, WB
SLC1A4	13067-2-AP	Rabbit Poly	ELISA, IP, WB
SLC24A6	21430-1-AP	Rabbit Poly	ELISA, IF, WB
SLC45A2	10453-1-AP	Rabbit Poly	ELISA, IF, IHC, IP, WB
SLC6A8	20299-1-AP	Rabbit Poly	ELISA, WB
SLC7A5	13752-1-AP	Rabbit Poly	ELISA, IHC, WB
SLIT2-Specific	20217-1-AP	Rabbit Poly	ELISA, FC, IF, IHC, WB
SLITRK4	13835-1-AP	Rabbit Poly	ELISA, WB
SLMAP	25220-1-AP	Rabbit Poly	ELISA, WB
SLU7	12050-1-AP	Rabbit Poly	ELISA, IHC, WB
SMN	11708-1-AP	Rabbit Poly	ECLIA, ELISA, IF, IHC, IP, WB
SMN	20451-1-AP	Rabbit Poly	ELISA, IF, IHC, IP, WB
SMN	22329-1-AP	Rabbit Poly	ELISA, IF, WB
SMN (Human, Mouse, Rat)	60154-2-Ig	Mouse Mono	ELISA, WB
SMN (human-Specific)	60154-1-Ig	Mouse Mono	ELISA, IF, IHC, IP, WB

00 This number shows the amount of times our antibody has been cited in a publication.

SMNDC1
→ STBD1

More validation images available on our website. 



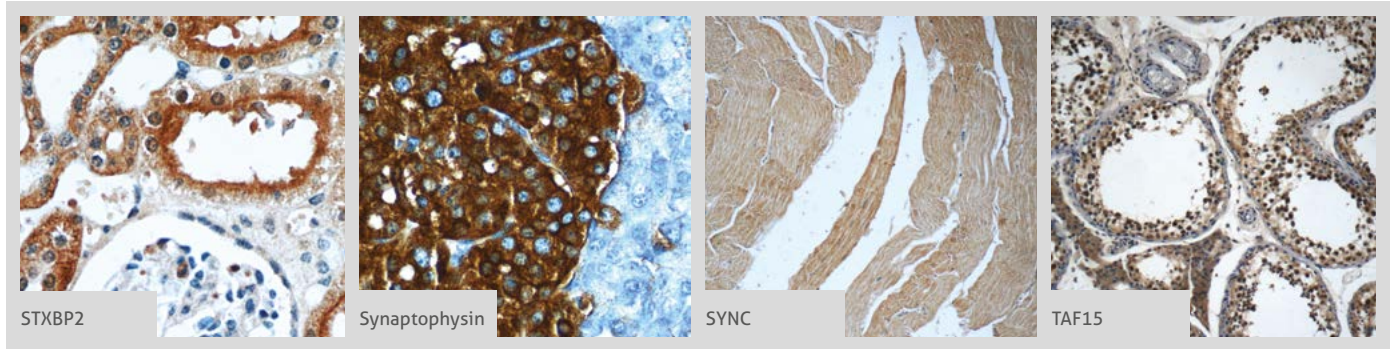
Antibody Name	Cat. No.	Type	Applications
SMNDC1	12178-1-AP	Rabbit Poly	ELISA, IHC, WB
SMN-Exon7	60255-1-Ig	Mouse Mono	ELISA, IF, WB
smooth muscle actin specific	4 55135-1-AP	Rabbit Poly	ELISA, IHC, WB
SNAI2	4 12129-1-AP	Rabbit Poly	ELISA, IHC, WB
SNAP23	10825-1-AP	Rabbit Poly	ELISA, FC, IF, IHC, IP, WB
SNAP25	10007-1-AP	Rabbit Poly	ELISA, WB
SNAP25	14903-1-AP	Rabbit Poly	ELISA, IF, IP, WB
SNAP25	60159-1-Ig	Mouse Mono	ELISA, IF, IP, WB
SNAP29	2 12704-1-AP	Rabbit Poly	ELISA, IF, IHC, IP, WB
SNAPIN	 4 10055-1-AP	Rabbit Poly	ELISA, FC, IF, IHC, IP, WB
SNCB	10498-1-AP	Rabbit Poly	ELISA, FC, IF, IHC, IP, WB
SNIP1	14950-1-AP	Rabbit Poly	ELISA, IF, IP, WB
SNRNP200	23875-1-AP	Rabbit Poly	ELISA, IP, WB
SNRNP48	24297-1-AP	Rabbit Poly	ELISA, IHC, WB
SNRPA	10212-1-AP	Rabbit Poly	ELISA, IHC, WB
SNRPA1	17368-1-AP	Rabbit Poly	ELISA, IF, IHC, IP, WB
SNRPB	16807-1-AP	Rabbit Poly	ELISA, IHC, WB
SNRPB2	3 13512-1-AP	Rabbit Poly	ELISA, IF, IHC, IP, WB
SNRPD1	10352-1-AP	Rabbit Poly	ELISA, WB
SNRPD2	 14789-1-AP	Rabbit Poly	ELISA, IHC, WB
SNRPD2	66111-1-Ig	Mouse McAb	ELISA, WB
SNRPD3	10379-1-AP	Rabbit Poly	ELISA, IHC, WB
SNRPE	20407-1-AP	Rabbit Poly	ELISA, IF, IHC, WB
SNRPF	14977-1-AP	Rabbit Poly	ELISA, FC, IF, IHC, WB
SNRPG	15084-1-AP	Rabbit Poly	ELISA, IHC, WB
SNRPN	11070-1-AP	Rabbit Poly	ELISA, IF, IHC, WB
SOD1	14 10269-1-AP	Rabbit Poly	ELISA, IF, IHC, IP, WB
SOD2	9 24127-1-AP	Rabbit Poly	ELISA, IF, IHC, IP, WB
Somatostatin-Specific	17512-1-AP	Rabbit Poly	ELISA, IHC, WB

Antibody Name	Cat. No.	Type	Applications
SORCS1	18839-1-AP	Rabbit Poly	ELISA, FC, WB
SORCS1	23002-1-AP	Rabbit Poly	ELISA, FC, IHC, WB
Sortilin	12369-1-AP	Rabbit Poly	ELISA, FC, IHC, IP, WB
SOX10	10422-1-AP	Rabbit Poly	ELISA, WB
SOX12	23939-1-AP	Rabbit Poly	ELISA, WB
SOX13	 18902-1-AP	Rabbit Poly	ELISA, IF, IHC, IP, WB
SOX2	12 11064-1-AP	Rabbit Poly	ELISA, IF, IHC, WB
SOX2	4 20118-1-AP	Rabbit Poly	ELISA, WB
SOX6	14010-1-AP	Rabbit Poly	ELISA, WB
SOX8	20627-1-AP	Rabbit Poly	ELISA, IHC, WB
SPARCL1	13517-1-AP	Rabbit Poly	ELISA, IHC, IP, WB
SPATA13	21400-1-AP	Rabbit Poly	ELISA, IF, WB
SPATA7	2 12020-1-AP	Rabbit Poly	ELISA, IF, IHC, IP, WB
SPOCK1	12512-1-AP	Rabbit Poly	ELISA, IHC, WB
SPOCK2	 11725-1-AP	Rabbit Poly	ELISA, IHC, WB
SPR	16822-1-AP	Rabbit Poly	ELISA, IF, IHC, IP, WB
SPRY2	11383-1-AP	Rabbit Poly	ELISA, IF, IHC, WB
SPTBN2	55107-1-AP	Rabbit Poly	ELISA, IF, WB
SR-BI	3 21277-1-AP	Rabbit Poly	ELISA, IF, WB
SREBF1	13 14088-1-AP	Rabbit Poly	ELISA, IF, IP, WB
SRGAP1	13252-1-AP	Rabbit Poly	ELISA, IHC, IP, WB
SRGAP3	12823-1-AP	Rabbit Poly	ELISA, IHC, IP, WB
SRGAP3-Specific	20224-1-AP	Rabbit Poly	ELISA, IF, IHC, IP, WB
SRI	16471-1-AP	Rabbit Poly	ELISA, IF, IHC, IP, WB
SRPX2	3 11845-1-AP	Rabbit Poly	ELISA, IHC, WB
SRR	17955-1-AP	Rabbit Poly	ELISA, IHC, WB
SRRM1	12822-1-AP	Rabbit Poly	ELISA, IP, WB
SSBP1	2 12212-1-AP	Rabbit Poly	ChIP, ELISA, WB
STAC	11480-1-AP	Rabbit Poly	ELISA, WB
STAU1	3 14225-1-AP	Rabbit Poly	ELISA, IP, WB
STBD1	3 11842-1-AP	Rabbit Poly	ELISA, IF, IP, WB

00 This number shows the amount of times our antibody has been cited in a publication.

STIM1
TBR1 ←

More validation images available on our website.



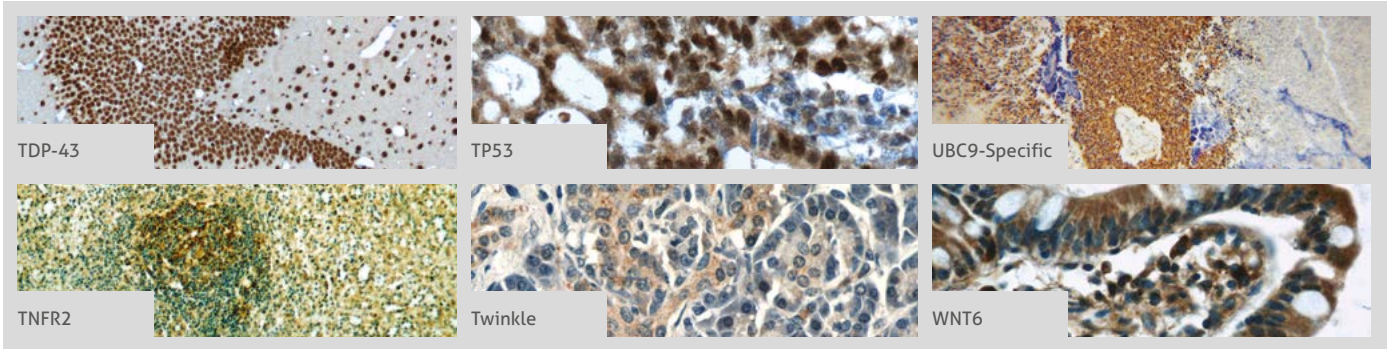
Antibody Name	Cat. No.	Type	Applications
STIM1	12 11565-1-AP	Rabbit Poly	ELISA, FC, IF, IHC, IP, WB
STIM1	66189-1-Ig	Mouse Mono	ELISA, IHC, WB
STMN2	8 10586-1-AP	Rabbit Poly	ELISA, IF, IHC, IP, WB
STMN3	2 11311-1-AP	Rabbit Poly	ELISA, IHC, IP, WB
STMN3	66152-1-Ig	Mouse Mono	ELISA, WB
STRAP	18277-1-AP	Rabbit Poly	ELISA, IF, IHC, IP, WB
STUB1	2 55430-1-AP	Rabbit Poly	ELISA, IF, IHC, WB
STXBP1	11459-1-AP	Rabbit Poly	ELISA, IF, IHC, IP, WB
STXBP1	20562-1-AP	Rabbit Poly	ELISA, IHC, WB
STXBP2	15312-1-AP	Rabbit Poly	ELISA, IHC, WB
STXBP3	13764-1-AP	Rabbit Poly	ELISA, IHC, IP, WB
STXBP4	14231-1-AP	Rabbit Poly	ELISA, IF, IHC, WB
STXBP5	24512-1-AP	Rabbit Poly	ELISA, IF, IP, WB
SURVIVIN	14 10508-1-AP	Rabbit Poly	ELISA, IF, IHC, IP, WB
SURVIVIN-Specific	19119-1-AP	Rabbit Poly	ELISA, IF, IHC
SV2B	14624-1-AP	Rabbit Poly	ELISA, IHC, IP, WB
SV2C	21271-1-AP	Rabbit Poly	ELISA, IP, WB
SYAP1	16272-1-AP	Rabbit Poly	ELISA, IF, IHC, IP, WB
SYF2	16958-1-AP	Rabbit Poly	ELISA, IF, WB
SYN1-Specific	20258-1-AP	Rabbit Poly	ELISA, IP, WB
SYN2	16573-1-AP	Rabbit Poly	ELISA, WB
Synaptogyrin-1	10432-1-AP	Rabbit Poly	ELISA, WB
Synaptogyrin-4	21751-1-AP	Rabbit Poly	ELISA, WB
Synaptophysin	3 17785-1-AP	Rabbit Poly	ELISA, IF, IHC, IP, WB
Synaptophysin	60191-1-Ig	Mouse Mono	ELISA, IF, WB
Synaptopodin	5 21064-1-AP	Rabbit Poly	ELISA, IF, IHC, WB
Synaptoporin	14143-1-AP	Rabbit Poly	ELISA, IHC, IP, WB
Synaptotagmin-1	2 14511-1-AP	Rabbit Poly	ELISA, IF, IHC, IP, WB
Synaptotagmin-11	12031-1-AP	Rabbit Poly	ELISA, WB

Antibody Name	Cat. No.	Type	Applications
Synaptotagmin-12	55015-1-AP	Rabbit Poly	ELISA, WB
Synaptotagmin-3	12726-1-AP	Rabbit Poly	ELISA, WB
Synaptotagmin-4	12642-1-AP	Rabbit Poly	ELISA, IHC, WB
Synaptotagmin-4	20472-1-AP	Rabbit Poly	ELISA, WB
Synaptotagmin-9	12793-1-AP	Rabbit Poly	ELISA, WB
SYNC	25151-1-AP	Rabbit Poly	ELISA, IHC, IP, WB
SYNCRIP	14024-1-AP	Rabbit Poly	ELISA, IP, WB
SYNGAP1	19739-1-AP	Rabbit Poly	ELISA, IF, IP, WB
SYNJ1	24677-1-AP	Rabbit Poly	ELISA, IF, IHC, WB
Syntaphilin	13646-1-AP	Rabbit Poly	ELISA, WB
Syntaxin 12	14259-1-AP	Rabbit Poly	ELISA, FC, IF, IHC, WB
Syntaxin 17	3 17815-1-AP	Rabbit Poly	ELISA, IF, IHC, IP, WB
Syntaxin 18	16013-1-AP	Rabbit Poly	ELISA, IHC, WB
Syntaxin 2	55033-1-AP	Rabbit Poly	ELISA, IF, WB
Syntaxin 3	2 15556-1-AP	Rabbit Poly	ELISA, IF, IP, WB
Syntaxin 4	2 14988-1-AP	Rabbit Poly	ELISA, IP, WB
Syntaxin 8	12206-1-AP	Rabbit Poly	ELISA, FC, IF, IP, WB
Syntenin-1	22399-1-AP	Rabbit Poly	ELISA, FC, IF, IHC, IP, WB
TAC1	13839-1-AP	Rabbit Poly	ELISA, IHC, WB
TACR2	25270-1-AP	Rabbit Poly	ELISA, FC, WB
TACR3	22334-1-AP	Rabbit Poly	ELISA, IHC
TAF15	24235-1-AP	Rabbit Poly	ELISA, IF, IHC, WB
TAGLN3	12246-1-AP	Rabbit Poly	ELISA, IHC, WB
TAU	2 10274-1-AP	Rabbit Poly	ELISA, IHC, WB
TBCB	15782-1-AP	Rabbit Poly	ELISA, IF, IP, WB
TBP	10 22006-1-AP	Rabbit Poly	ELISA, IP, WB
TBP	66166-1-Ig	Mouse Mono	ELISA, IF, IHC, IP, WB
TBP	22246-1-AP	Rabbit Poly	ELISA, IF, WB
TBR1	10 20932-1-AP	Rabbit Poly	ELISA, IF, IHC, IP, WB

00 This number shows the amount of times our antibody has been cited in a publication.

TCERG1
→ TSPAN6

More validation images available on our website. 



Antibody Name	Cat. No.	Type	Applications
TCERG1	21858-1-AP	Rabbit Poly	ELISA, IF, IHC, WB
TCOF1	3 11003-1-AP	Rabbit Poly	ELISA, IF, IHC, WB
TDP1	10641-1-AP	Rabbit Poly	ELISA, IF, IP, WB
TDP-43	757 10782-2-AP	Rabbit Poly	ChIP, CoIP, ELISA, FC, IF, IHC, IP, RIP, WB
TDP-43	50 12892-1-AP	Rabbit Poly	ELISA, IF, IHC, IP, WB
TDP-43	36 60019-2-Ig	Mouse Mono	ELISA, FC, IF, IHC, IP, WB
TDP-43	18280-1-AP	Rabbit Poly	ELISA, FC, IF, IHC, IP, WB
TFAM	8 19998-1-AP	Rabbit Poly	ELISA, IHC, WB
TFAM	22586-1-AP	Rabbit Poly	ELISA, IHC, IP, WB
TFAM	23996-1-AP	Rabbit Poly	ELISA, IF, IHC, IP, WB
TFIP11	14436-1-AP	Rabbit Poly	ELISA, IF, WB
TFIP11	66114-1-Ig	Mouse Mono	ELISA, IF, IHC, WB
TGF-beta 1	25 18978-1-AP	Rabbit Poly	ELISA, IF, IHC, WB
TGFBI/BIGH3	29 10188-1-AP	Rabbit Poly	ELISA, FC, IF, IHC, IP, WB
TGFBI/BIGH3	4 60007-1-Ig	Mouse Mono	ELISA, IHC, IP, WB
THRA	10139-1-AP	Rabbit Poly	ELISA, WB
TIMM13	11973-1-AP	Rabbit Poly	ELISA, IF, IHC, WB
TIMM8A	11179-1-AP	Rabbit Poly	ELISA, IP, WB
TLR4	14 19811-1-AP	Rabbit Poly	ELISA, IHC, WB
TMEM106B	2 20995-1-AP	Rabbit Poly	ELISA, IF, IHC, IP, WB
TMOD4	5 11753-1-AP	Rabbit Poly	ELISA, IF, IHC, IP, WB
TNF alpha	12 60291-1-Ig	Mouse Mono	ELISA, IHC, WB
TNF-alpha	12 17590-1-AP	Rabbit Poly	ELISA, IHC, WB
TNFR2	19272-1-AP	Rabbit Poly	ELISA, FC, IF, IHC, IP, WB
TNNC1	13504-1-AP	Rabbit Poly	ELISA, IHC, WB
TNNI1	16102-1-AP	Rabbit Poly	ELISA, IHC, WB
TNNI1	22253-1-AP	Rabbit Poly	ELISA, IHC, WB
TNNI2	11634-1-AP	Rabbit Poly	ELISA, IHC, WB
TNNI2	22130-1-AP	Rabbit Poly	ELISA, IHC, IP, WB

Antibody Name	Cat. No.	Type	Applications
TNNT1	15893-1-AP	Rabbit Poly	ELISA, IHC, IP, WB
TNNT3	19729-1-AP	Rabbit Poly	ELISA, IHC, WB
Torsin A	10296-1-AP	Rabbit Poly	ELISA, IHC, WB
TP53	21891-1-AP	Rabbit Poly	ELISA, IF, IHC, IP, WB
tPA	3 10147-1-AP	Rabbit Poly	ELISA, IHC, IP, WB
TPH1	20879-1-AP	Rabbit Poly	ELISA, WB
TPH2	22590-1-AP	Rabbit Poly	ELISA, WB
TPM2	11038-1-AP	Rabbit Poly	ELISA, IF, IHC, IP, WB
TPM3	10737-1-AP	Rabbit Poly	ELISA, IHC, IP, WB
TPM4	13741-1-AP	Rabbit Poly	ELISA, IHC, IP, WB
TPP1	12479-1-AP	Rabbit Poly	ELISA, IHC, WB
Transferrin receptor	7 10084-2-AP	Rabbit Poly	ELISA, IF, IHC, IP, WB
Transgelin 2	11 10234-2-AP	Rabbit Poly	ELISA, IF, IHC, WB
Transgelin 2	60044-1-Ig	Mouse Mono	ELISA, IHC, IP, WB
transgelin /SM22	22 10493-1-AP	Rabbit Poly	ELISA, FC, IF, IHC, WB
transgelin /SM22	60213-1-Ig	Mouse Mono	ELISA, IHC, WB
transgelin /SM22-specific	15502-1-AP	Rabbit Poly	ELISA, IHC, WB
Transgelin -2-specific	2 15508-1-AP	Rabbit Poly	ELISA, FC, IF, IHC, IP, WB
Transportin-1	20679-1-AP	Rabbit Poly	ELISA, WB
TRAPPC4	12074-1-AP	Rabbit Poly	ELISA, WB
TRIM67	24369-1-AP	Rabbit Poly	ELISA, WB
TRIM9	3 10786-1-AP	Rabbit Poly	ELISA, IHC, IP, WB
TrkB	13129-1-AP	Rabbit Poly	ELISA, IHC, IP, WB
TrkC	11999-1-AP	Rabbit Poly	ELISA, WB
TRPA1	19124-1-AP	Rabbit Poly	ELISA, FC, WB
TRPC1	19482-1-AP	Rabbit Poly	ELISA, FC, IF, WB
TRPC4	21349-1-AP	Rabbit Poly	ELISA, IHC, WB
TRPC6	18236-1-AP	Rabbit Poly	ELISA, FC, IF, IHC, IP, WB
TSPAN6	12293-1-AP	Rabbit Poly	ELISA, WB

00 This number shows the amount of times our antibody has been cited in a publication.

TSPAN7
β-ENaC ←

Antibody Name	Cat. No.	Type	Applications
TSPAN7	18695-1-AP	Rabbit Poly	ELISA, IHC, IP, WB
TTBK2	2 15072-1-AP	Rabbit Poly	ELISA, IF, IHC, WB
TTF2	13722-1-AP	Rabbit Poly	ELISA, IF, IHC, IP, WB
TUB	17928-1-AP	Rabbit Poly	ELISA, IHC, IP, WB
TULP1	18971-1-AP	Rabbit Poly	ELISA, IF, IHC, WB
TULP2	12668-1-AP	Rabbit Poly	ELISA, WB
TULP3	13637-1-AP	Rabbit Poly	ELISA, IHC, IP, WB
Twinkle	13435-1-AP	Rabbit Poly	ELISA, IHC, WB
Twinkle	18793-1-AP	Rabbit Poly	ELISA, IHC, WB
TWIST1	9 18125-1-AP	Rabbit Poly	ELISA, WB
TWIST1-specific	25465-1-AP	Rabbit Poly	ELISA, IP, WB
TWSG1	12327-1-AP	Rabbit Poly	ELISA, IHC, WB
TXNL4B	12927-1-AP	Rabbit Poly	ELISA, WB
U2AF35	5 10334-1-AP	Rabbit Poly	ELISA, IHC, WB
U2AF35	60289-1-Ig	Mouse Mono	ELISA, IHC, IP, WB
U2AF65	15624-1-AP	Rabbit Poly	ELISA, IHC, WB
UAP56	14798-1-AP	Rabbit Poly	ELISA, IHC, IP, WB
UBC9	10070-1-AP	Rabbit Poly	ELISA, IHC, WB
UBC9	10224-1-AP	Rabbit Poly	ELISA, IHC, WB
UBC9	51018-2-AP	Rabbit Poly	ELISA, IHC, IP, WB
UBC9	60201-1-Ig	Mouse Mono	ELISA, IHC, WB
UBC9-Specific	14837-1-AP	Rabbit Poly	ELISA, FC, IF, IHC, WB
UBE1	15912-1-AP	Rabbit Poly	ELISA, IHC, WB
UBE2K	11834-3-AP	Rabbit Poly	ELISA, IHC, WB
UBQLN2	23449-1-AP	Rabbit Poly	ELISA, IF, IHC, WB
UCHL1/PGP9.5	3 14730-1-AP	Rabbit Poly	ELISA, IF, IHC, IP, WB
UCHL3	12384-1-AP	Rabbit Poly	ELISA, IHC, IP, WB
UNC13A/Munc13-1	55053-1-AP	Rabbit Poly	ELISA, IP, WB
VAMP1	13115-1-AP	Rabbit Poly	ELISA, IF, WB
VAMP2	10135-1-AP	Rabbit Poly	ELISA, IHC, WB
VAMP3/Cellubrevin	2 10702-1-AP	Rabbit Poly	ELISA, IHC, IP, WB
VAMP8	15546-1-AP	Rabbit Poly	ELISA, WB
VANGL1	14696-1-AP	Rabbit Poly	ELISA, WB
VAPB	6 14477-1-AP	Rabbit Poly	ELISA, FC, IF, IHC, IP, WB
VAPB	66191-1-Ig	Mouse Mono	ELISA, IF, IHC, WB
VCAM-1	10 11444-1-AP	Rabbit Poly	ELISA, FC, IF, IHC, WB
VCP	2 10736-1-AP	Rabbit Poly	ELISA, IF, IHC, IP, WB
VCP	60316-1-Ig	Mouse Mono	ELISA, IF, IHC, WB

Antibody Name	Cat. No.	Type	Applications
VGAT	2 14471-1-AP	Rabbit Poly	ELISA, IF, IHC, IP, WB
VGLUT1	55491-1-AP	Rabbit Poly	ELISA, FC, IHC
VGLUT2	25261-1-AP	Rabbit Poly	ELISA, IF, WB
VILIP 3	10989-1-AP	Rabbit Poly	ELISA, IF, IHC, IP, WB
VILIP-1	13919-1-AP	Rabbit Poly	ELISA, IF, IP, WB
Vimentin	65 10366-1-AP	Rabbit Poly	ELISA, FC, IF, IHC, WB
Vimentin	22031-1-AP	Rabbit Poly	ELISA, WB
VIPR1	14878-1-AP	Rabbit Poly	ELISA, IHC
Visfatin	3 11776-1-AP	Rabbit Poly	ELISA, IHC, IP, WB
VMAT2	20873-1-AP	Rabbit Poly	ELISA, WB
VN1R4	18846-1-AP	Rabbit Poly	ELISA, WB
VPS35	2 10236-1-AP	Rabbit Poly	ELISA, IF, IP, WB
VTI1B	14495-1-AP	Rabbit Poly	ELISA, IHC, IP, WB
WBP1	11042-1-AP	Rabbit Poly	ELISA, IHC, WB
WBP2	12030-1-AP	Rabbit Poly	ELISA, IF, IHC, WB
WDR1	2 13676-1-AP	Rabbit Poly	ELISA, IHC, IP, WB
WFS1	17 11558-1-AP	Rabbit Poly	CoIP, ELISA, IF, IHC, IP, WB
WNT3	17983-1-AP	Rabbit Poly	ELISA, FC, IP, WB
WNT6	24201-1-AP	Rabbit Poly	ELISA, IHC, WB
XAB2	10637-1-AP	Rabbit Poly	ELISA, IP, WB
YWHAB	10936-1-AP	Rabbit Poly	ELISA, IHC
YWHAZ	14881-1-AP	Rabbit Poly	ELISA, WB
ZCRB1	25629-1-AP	Rabbit Poly	ELISA, IF, WB
ZFYVE27	2 12680-1-AP	Rabbit Poly	ELISA, IF, IP, WB
Zinc-alpha-2-glycoprotein	4 13399-1-AP	Rabbit Poly	ELISA, IF, IHC, WB
ZnT3	3 17363-1-AP	Rabbit Poly	ELISA, IF, IHC, WB
ZO-1	21 21773-1-AP	Rabbit Poly	ELISA, FC, IF, IHC, IP, WB
β-ENaC	2 14134-1-AP	Rabbit Poly	ELISA, IHC, WB

00 This number shows the amount of times our antibody has been cited in a publication.

CONTACT US

Proteintech Group *US Head Office*

PHONE 1 (888) 4PTGLAB
(1-888-478-4522)
(toll free in USA),
or 1(312) 455-8498
(outside USA)

FAX 1 (312) 455-8408

ADDRESS Proteintech Group, Inc.
5400 Pearl Street, Suite 300,
Rosemont, IL 60018, USA

EMAIL proteintech@ptglab.com

Proteintech Europe *United Kingdom*

PHONE +44 (161) 8393007

FAX +44 (161) 2413103

ADDRESS Proteintech Europe, Ltd.
4th Floor,
196 Deansgate,
Manchester, M3 3WF

EMAIL europe@ptglab.com

Proteintech Europe *Germany*

EMAIL germany@ptglab.com
Sales and technical support only.

Proteintech *China Office*

PHONE 027-87531629
or 4006-900-926

FAX 027-87531627

ADDRESS Wuhan Sanying Biotechnologies
D3-3, No.666 Gaoxin Avenue,
Wuhan East Lake Hi-tech Development Zone
Wuhan, Hubei, P.R.C

EMAIL service@ptglab.com

Support

Available 24 hours via Live Chat and 9-5 (CDT) via phone.

Email support also available.

LIVE CHAT
www.ptglab.com

TWITTER
[@proteintech](https://twitter.com/proteintech)

BLOG
www.ptglab.com/news/blog

YOUTUBE
www.youtube.com/Proteintech



We are ISO 9001 and
ISO 13485 accredited.

