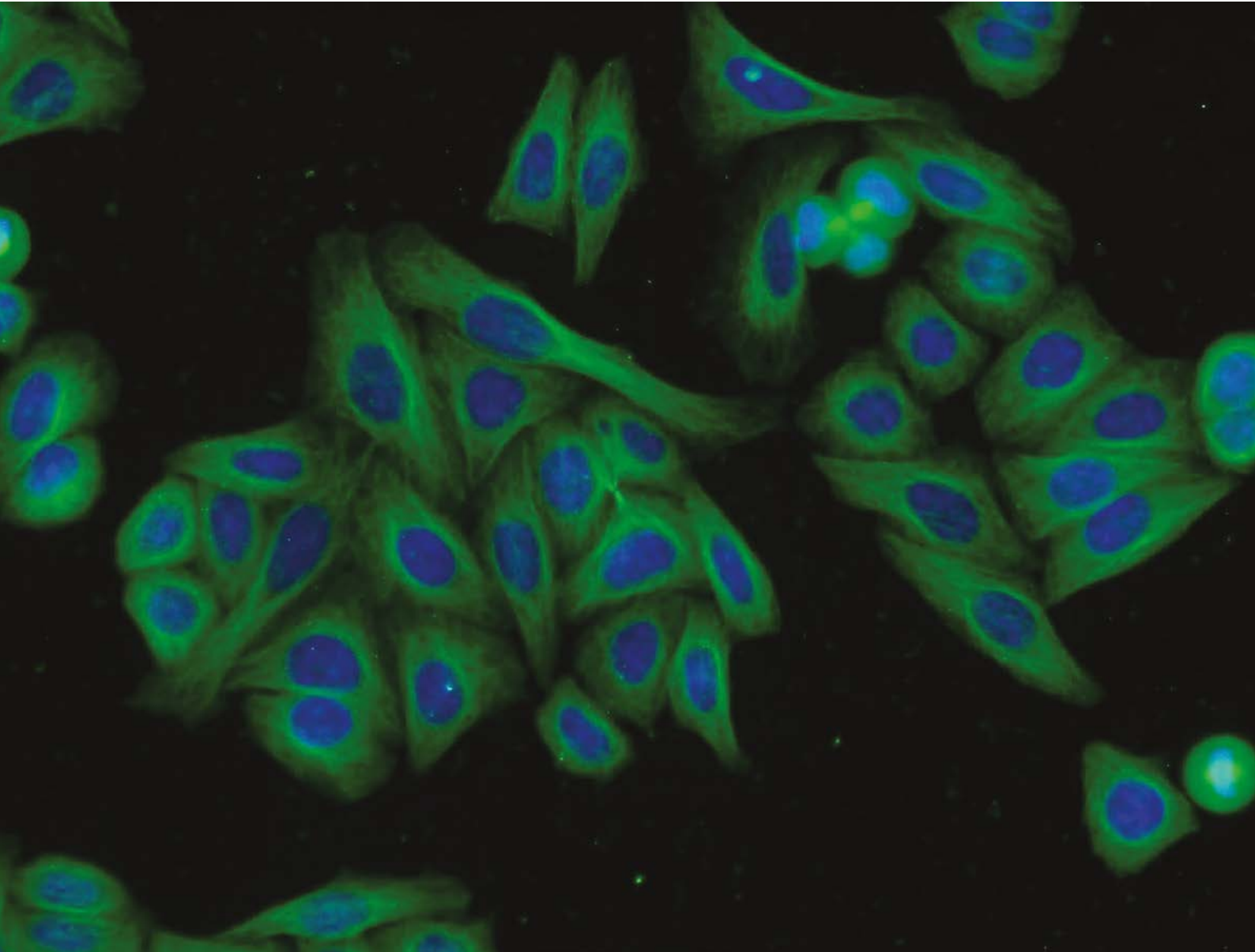


# MONOCLONAL ANTIBODIES

[www.ptglab.com](http://www.ptglab.com)



---

**Front Cover:**

*Immunofluorescent analysis of HepG2 cells using Tubulin-beta antibody (66240-1-Ig) at a dilution of 1:50 and Alexa Fluor 488-conjugated AffiniPure Goat Anti-Mouse IgG (H+L).*

# WELCOME

---

## Original Manufacturer Original Products

Part of Proteintech®'s early vision was to make all its own products, to the highest standards possible, thus assuming ultimate responsibility for their quality. In addition to its founders' refusal to source a single antibody from any other provider, they also refused to supply any other provider. When you receive your antibody and see the Proteintech® logo on the vial, know that you hold something that is truly unique.

As an original manufacturer, Proteintech® can offer you:

- 100% original products; each product is unique and can only be bought directly or through approved distributors.
- Antibodies now tested in siRNA-treated samples to demonstrate antibody specificity.
- Guaranteed to work in any species and any applications, or get your money back.

---

## siRNA Validation

Recently, Proteintech® has pledged to undertake siRNA knockdown validation of most of its antibodies by the end of 2015. The specificities of over 550 of its antibodies have already been confirmed by customers using siRNA knockdown, and published in over 650 journal papers. In adding its own siRNA data to those previously available in the literature, Proteintech®'s aim is to make a gold standard of antibody validation more accessible to its customers.

- Help set a new benchmark of antibody validation.
- Improve on industry standards.
- Demonstrate product specificity.
- Strengthen existing validation procedures.

---

## What's Inside

---

### 4-5 Product Focus

- KEAP1
- GFAP1
- RRM1/RNR1
- RENALASE

---

### 6-13 Antibodies:

14-3-3 → Zyxin

---

### 14 Contact Us

# PRODUCT FOCUS

## KEAP1

**Catalog Number**  
60027-1-Ig

**Type**  
Mouse Monoclonal

**Applications**  
ELISA, IF, IHC, WB

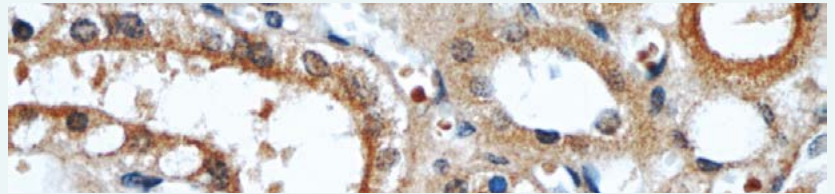
12 Publications

Kelch-like ECH-associated protein 1 (Keap1), also known as INRF2, KIAA0132 and KLHL19, has been shown to play an important role in maintaining cellular homeostasis. It acts by binding to Nrf2, a key controller of antioxidative responses, inducing its ubiquitination and proteolysis. Due to Keap1's role in regulating Nrf2, and thus antioxidative responses, Keap1 is an attractive target for pharmacological intervention, particularly in conditions whereby inflammation and oxidative responses damage cells and tissues.

As oxidative stress plays an important role in the pathogenesis of diabetes, diabetics are at a high risk of developing inflammatory cutaneous disorders. For this reason, Lee et al.

examined the relationship of Nrf2 expression in non-diabetic skin and compared levels to diabetic skin.

In the study the authors were able to detect Nrf2 in the skin of healthy control subjects but not in skin samples taken from diabetic subjects. Furthermore, Lee et al. used Proteintech®'s anti-Keap1 monoclonal antibody (60027-1-Ig) to detect levels of this negative regulator of Nrf2. Western blotting showed that Keap1 was not expressed in the skin of either diabetics or controls. The authors reasoned that because Keap1 was not expressed in either tissue type, Nrf2 may be regulated by an independent Keap1 pathway within the skin.



*Immunohistochemical of paraffin-embedded human kidney using KEAP1 antibody (60027-1-Ig) at a dilution of 1:50 (40x objective).*

## GFAP1

**Catalog Number**  
60190-1-Ig

**Type**  
Mouse Monoclonal

**Applications**  
ELISA, IF, IHC, IP, WB

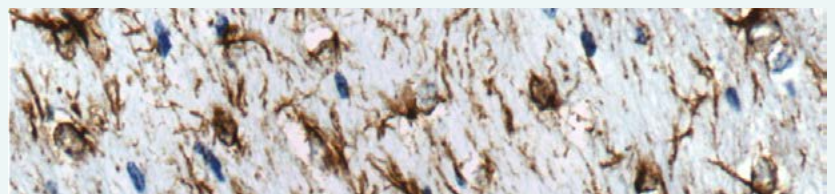
6 Publications

Glial fibrillary acidic protein (GFAP) is an intermediate filament protein expressed in a variety of cells within the CNS including ependymal cells and astrocytes. GFAP proteins bind to each other to produce an intermediate filament network within cells, providing frameworks for cellular integrity and cell-cell communications between neurons and astrocytes. It is also vital for proper structural integration of the blood brain barrier (BBB); GFAP knockout mice exhibit abnormal formation of the BBB, in addition to undergoing neuronal degeneration. Furthermore, Alexander disease, a fatal neurodegenerative condition, also arises from mutations in GFAP.

Recent work by Campbell et al. has investigated the link between neural stem cells (NSCs) and the pathogenesis of primary CNS lymphomas. Endogenous neural stem cells exist within the brain, specifically the

subventricular zone, where they await cues to take part in neurogenesis – the replacement of lost or damaged neural cells.

Campbell et al. observed that NSCs accumulated around the border and advancing edge of tumours within the brain. Using neurosurgically excised tumours of NHL-CNS metastatic carcinomas, the authors demonstrated that Sox2+ NSCs line the border of non-glial tumours. Furthermore, using Proteintech's anti-GFAP antibody, the authors demonstrated that Sox2 expression was present in both reactive GFAP-immunopositive astrocytes and in GFAP-negative cells, located at the edge of the tumour. The authors concluded from this that neuronal stem cells migrate to non-glial neoplasms and differentiate into glial cells. These findings are important when considering the potential future applications of NSCs.



*Immunohistochemistry of paraffin-embedded mouse brain tissue slide using GFAP antibody (60190-1-Ig) at a dilution of 1:5000 (40x objective).*

## RRM1/RNR1

**Catalog Number**  
**60073-1-Ig**

**Type**  
**Mouse Monoclonal**

**Applications**  
**ELISA, FC, IHC, IP, WB**

**1 Publication**

Ribonucleotide reductase (RNR) is an enzyme partly encoded by the RRM1 gene. Expression of RRM1 produces the RNR1 subunit of RNR, which functions as a heterodimeric tetramer with either of two RNR2 splice variants RRM2a or RRM2b in the RNR holoenzyme. While this interaction is essential for de novo synthesis of deoxyribonucleotides, it is unclear whether this association is necessary for other biological activities associated with RRM1.

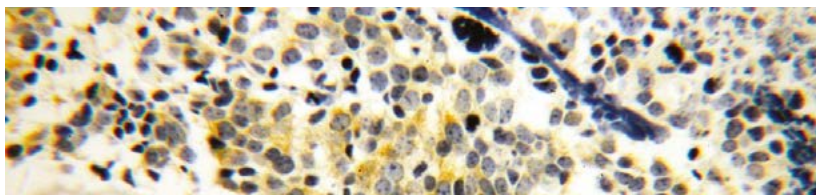
Recent studies have shown that mutations in the RRM1 gene are found in a variety of disease states including rhabdomyosarcoma, Wilms tumour, various adenocarcinomas and lung cancers. It is likely, therefore, that RRM1/RNR1 plays an important role in carcinogenesis.

Recent work by Lv et al. examined the role of erlotinib, a chemotherapeutic agent, in treatment of non-small cell lung cancer (NSCLC). The authors examined biopsies from patients with NSCLC and sought to identify expression of molecular markers frequently associated with carcinogenesis. As well as identifying expression of 'typical'

tumour markers such as mutations in EGFR1, Lv et al. also examined the expression of RRM1 before treatment with the erlotinib regime. Previous work has shown that mRNA and protein expression levels of RRM1 predict responses to chemotherapy treatment with gemcitabine and platinum-based drugs, with low levels of expression correlating with poor survival in patients.

Using Proteintech®'s monoclonal antibody against RRM1 (60073-1-Ig), Lv and colleagues et al. were able to demonstrate that the majority of the patients demonstrating responses to the treatment regime displayed elevated levels of RRM1 after treatment. However, the authors went on to suggest that RRM1 levels may increase after treatment with chemotherapy and suggested that a further follow-up study with radiotherapy treatment alone is necessary to assess the predictive capabilities of RRM1.

In conclusion, RRM1 is an important protein regulating DNA replication and may serve as a useful prognostic marker in a variety of cancers.



*Immunohistochemical staining of paraffin-embedded human lung cancer using Proteintech® anti-RRM1 antibody (60073-1-Ig) at a dilution of 1:200 (40x objective).*

## RENALASE

**Catalog Number**  
**60128-1-Ig**

**Type**  
**Mouse Monoclonal**

**Applications**  
**ELISA, IHC, WB**

**2 Publications**

Renalase, also known as RNLS, C10orf59 and MAO-C, is a flavin adenine dinucleotide-dependent amine oxidase, predominantly expressed in the heart and kidney. Renalase is also expressed in the small intestine and in skeletal muscle. It is thought to play a role in the metabolism of catecholamines and their chemical relatives via nicotinamide adenine dinucleotide.

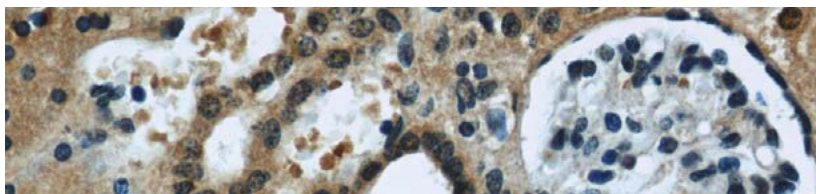
Tissue and plasma renalase levels are decreased in animal models of chronic kidney disease, and renalase deficiency is associated with increased blood pressure and elevated circulating catecholamines. Renalase expression is therefore implicated in the pathogenesis of high blood pressure.

Desir et al. were able to demonstrate that levels of renalase in the blood are regulated by renal function, renal perfusion and catecholamine levels.

Renalase concentrations were linked to both glomerular filtration rate and mass of the kidney. Furthermore, the authors also demonstrated that partial removal of the kidney results in decreased levels of renalase, suggesting that renal function plays an important role in regulating renalase secretion.

Using Proteintech®'s anti-renalase antibody, Desir et al. were able to demonstrate expression of the high molecular weight form of renalase in human serum using Western Blot. The authors suggest that glomerular filtration rate may play a role in favouring the formation and accumulation of higher molecular weight forms of renalase.

In conclusion, renalase plays an important role in maintaining blood pressure and expression may be useful as a prognostic tool in calculating cardiovascular risk factors.



*Immunohistochemistry of paraffin-embedded human kidney slide using RENALASE antibody (60128-1-Ig) at a dilution of 1:50.*

14-3-3  
→ Aurora B

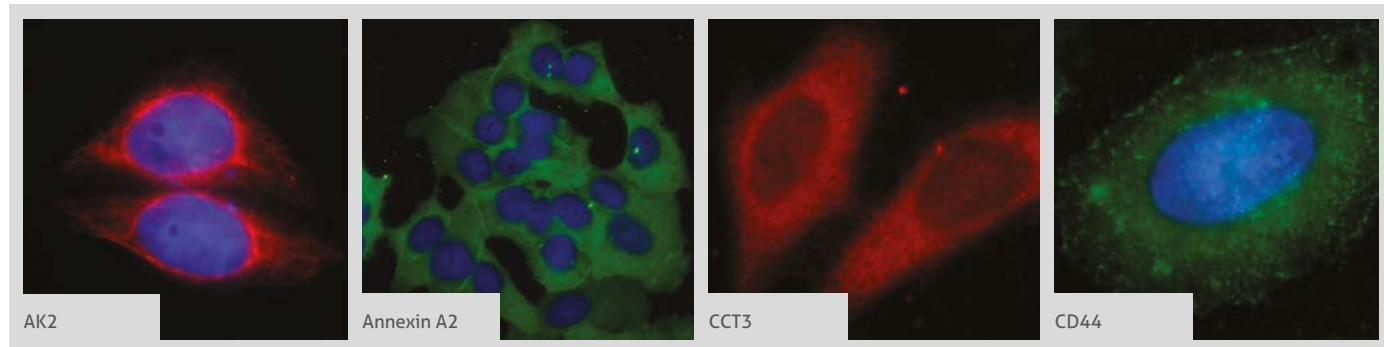
# ANTIBODY PRODUCT LIST

Antibody Name	Cat. No.	Type	Applications
14-3-3	66061-1-Ig	Mouse Mono	ELISA, FC, IF, IHC, WB
14-3-3 sigma	66251-1-Ig	Mouse Mono	ELISA, IF, IHC, WB
4EBP1	60246-1-Ig	Mouse Mono	ELISA, IF, IHC, WB
6*His, His-Tag	<b>57</b> 66005-1-Ig	Mouse Mono	ELISA, IF, IP, WB
ABCD1	60153-1-Ig	Mouse Mono	ELISA, IF, WB
Acetylated tubulin (Lys40)	<b>4</b> 66200-1-Ig	Mouse Mono	ELISA, IF, IHC, WB
ACPP	60176-1-Ig	Mouse Mono	ELISA, IHC, WB
ADIPOQ	66239-1-Ig	Mouse Mono	ELISA, WB
ADRP	60340-1-Ig	Mouse Mono	ELISA, IHC, WB
AEBP2	66141-1-Ig	Mouse Mono	ELISA, WB
AFM	66113-1-Ig	Mouse Mono	ELISA, IF, IHC, IP, WB
AHCY	66019-1-Ig	Mouse Mono	ELISA, IF, IHC, WB
AK2	<b>6</b> 66127-1-Ig	Mouse Mono	ELISA, FC, IF, IHC, WB
AKAP3	66255-1-Ig	Mouse Mono	ELISA, WB
AKT1	60203-1-Ig	Mouse Mono	ELISA, FC, IF, IHC, IP, WB
AKT1	60203-2-Ig	Mouse Mono	ELISA, IF, IHC, IP, WB
Albumin	66051-1-Ig	Mouse Mono	ELISA, IF, IHC, IP, WB
ALDH1A1	60171-1-Ig	Mouse Mono	ELISA, IF, IHC, WB
Aldolase C	66120-1-Ig	Mouse Mono	ELISA, IF, IHC, WB
ALK, CD246	60321-1-Ig	Mouse Mono	ELISA, IHC, WB
alpha 1 Antichymotrypsin/ AACT	66078-1-Ig	Mouse Mono	ELISA, IHC, WB
Alpha cardiac actin-specific	66125-1-Ig	Mouse Mono	ELISA, IF, IHC, WB
Alpha galactosidase A	66121-1-Ig	Mouse Mono	ELISA, IF, IHC, WB
alpha Tubulin	<b>23</b> 66031-1-Ig	Mouse Mono	ELISA, FC, IF, IHC, IP, WB

Antibody Name	Cat. No.	Type	Applications
Alpha-1-Antitrypsin	66135-1-Ig	Mouse Mono	ELISA, IF, IHC, IP, WB
Alpha-2-macroglobulin	66126-1-Ig	Mouse Mono	ELISA, IF, IHC, IP, WB
AMOT	60156-1-Ig	Mouse Mono	ELISA, IHC, WB
Amylase, alpha	66133-1-Ig	Mouse Mono	ELISA, IF, IHC, WB
Angiotensinogen	60126-1-Ig	Mouse Mono	ELISA, IHC, WB
Annexin A2	<b>1</b> 60051-1-Ig	Mouse Mono	ELISA, FC, IF, IHC, IP, WB
Annexin A2	<b>2</b> 66035-1-Ig	Mouse Mono	ELISA, FC, IF, IHC, IP, WB
Annexin IV	60288-2-Ig	Mouse Mono	ELISA, IF, IHC, WB
Annexin V	66245-1-Ig	Mouse Mono	ELISA, FC, IF, IHC, WB
ANP32B	66160-1-Ig	Mouse Mono	ELISA, IF, WB
Antithrombin III	66052-1-Ig	Mouse Mono	ELISA, IF, IHC, WB
APOA1	66206-1-Ig	Mouse Mono	ELISA, IHC, WB
APOA4	66252-1-Ig	Mouse Mono	ELISA, WB
APOBEC3G	60100-1-Ig	Mouse Mono	ELISA, IF, IHC, WB
APOD	66215-1-Ig	Mouse Mono	ELISA, WB
APOL1	66124-1-Ig	Mouse Mono	ELISA, FC, IF, IHC, IP, WB
Apolipoprotein H	66074-1-Ig	Mouse Mono	ELISA, IHC, WB
APP	60342-1-Ig	Mouse Mono	ELISA, IHC, WB
ARHGDI1	66054-1-Ig	Mouse Mono	ELISA, WB
ASS1	66036-1-Ig	Mouse Mono	ELISA, IF, IHC, WB
ATF4	<b>3</b> 60035-1-Ig	Mouse Mono	ChIP, ELISA, IF, IHC, WB
ATG5	60061-1-Ig	Mouse Mono	ELISA, WB
ATP5A1	66037-1-Ig	Mouse Mono	ELISA, FC, IF, IHC, IP, WB
ATP5C1	60284-1-Ig	Mouse Mono	ELISA, IHC, WB
Aurora B	60098-1-Ig	Mouse Mono	ELISA, IHC, WB

**00** This number shows the amount of times our antibody has been cited in a publication.

More validation images available on our website.



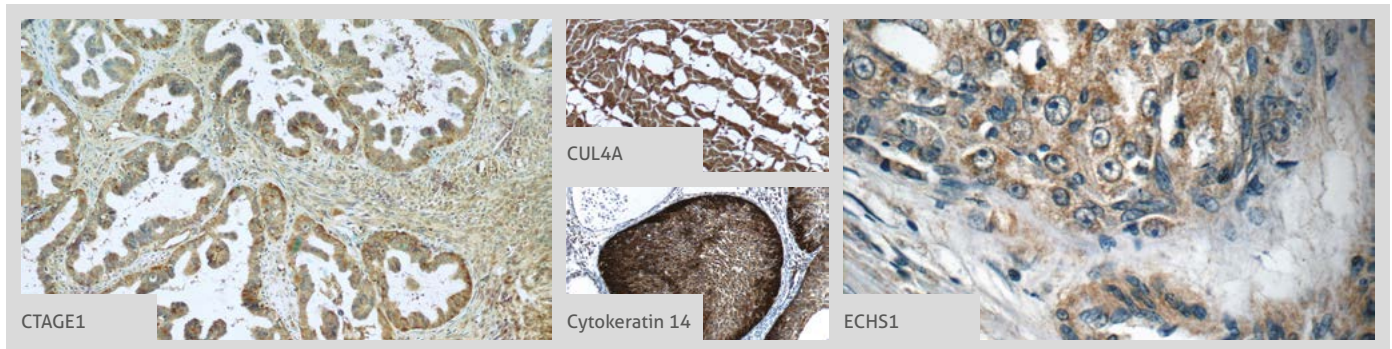
Antibody Name	Cat. No.	Type	Applications
AZGP1	66178-1-Ig	Mouse Mono	ELISA, IHC, WB
B23	4 60096-1-Ig	Mouse Mono	ELISA, IF, IHC, WB
BAX	3 60267-1-Ig	Mouse Mono	ELISA, IF, IHC, WB
BBS2	66246-1-Ig	Mouse Mono	ELISA, IF, WB
BBS5	66136-1-Ig	Mouse Mono	ELISA, IHC, WB
BCL2	5 60178-1-Ig	Mouse Mono	ELISA, FC, IHC, IP, WB
BCL2L1	2 66020-1-Ig	Mouse Mono	ELISA, IF, IHC, WB
BCS1L	60212-1-Ig	Mouse Mono	ELISA, IF, IHC, WB
BEST1	60326-1-Ig	Mouse Mono	ELISA, WB
beta actin	471 60008-1-Ig	Mouse Mono	ELISA, FC, IF, IHC, WB
beta actin	108 66009-1-Ig	Mouse Mono	ELISA, FC, IF, IHC, IP, WB
BID	60301-1-Ig	Mouse Mono	ELISA, IF, WB
BMI1	66161-1-Ig	Mouse Mono	ELISA, IF, IHC, IP, WB
BORIS	60079-1-Ig	Mouse Mono	ELISA, IF, WB
BRD8	60121-1-Ig	Mouse Mono	ELISA, IF, IHC, WB
BrdU	2 66241-1-Ig	Mouse Mono	ELISA, IF, IHC
BSA	66201-1-Ig	Mouse Mono	ELISA, WB
C3/C3b/C3c	66157-1-Ig	Mouse Mono	ELISA, IF, IHC, WB
C4 (gamma chain)	66242-1-Ig	Mouse Mono	ELISA, WB
C9orf72	66140-1-Ig	Mouse Mono	ELISA, IF, IHC, IP, WB
CA9	66243-1-Ig	Mouse Mono	ELISA, IF, IHC, WB
CAPZA1	66066-1-Ig	Mouse Mono	ELISA, IF, WB
Caspase 8	3 66093-1-Ig	Mouse Mono	ELISA, IF, IHC, IP, WB
Caspase 9	3 66169-1-Ig	Mouse Mono	ELISA, IF, IHC, IP, WB
Caveolin-1	66067-1-Ig	Mouse Mono	ELISA, IHC, WB
CCT3	60264-1-Ig	Mouse Mono	ELISA, FC, IF, IHC, WB
CD11a/Integrin alpha-L	66256-1-Ig	Mouse Mono	ELISA, IHC
CD11c/Integrin alpha X	60258-1-Ig	Mouse Mono	ELISA, IHC, WB
CD13	66211-1-Ig	Mouse Mono	ELISA, IHC, WB
CD138/Syndecan-1	60185-1-Ig	Mouse Mono	ELISA, WB

Antibody Name	Cat. No.	Type	Applications
CD138/Syndecan-1	60185-2-Ig	Mouse Mono	ELISA, IHC, WB
CD14	60253-1-Ig	Mouse Mono	ELISA, IF, IHC, WB
CD146/MCAM	66153-1-Ig	Mouse Mono	ELISA, FC, IHC, WB
CD1A	60173-1-Ig	Mouse Mono	ELISA, WB
CD1D	66257-1-Ig	Mouse Mono	ELISA, IHC, WB
CD2	60005-2-Ig	Mouse Mono	ELISA, IHC, WB
CD20	60271-1-Ig	Mouse Mono	ELISA, FC, IHC, WB
CD22	66103-1-Ig	Mouse Mono	ELISA, IHC, WB
CD23	60208-1-Ig	Mouse Mono	ELISA, IHC, WB
CD23	60208-2-Ig	Mouse Mono	ELISA, IHC, WB
CD3 delta	60194-1-Ig	Mouse Mono	ELISA, WB
CD3 epsilon	60181-1-Ig	Mouse Mono	ELISA, FC, IHC, WB
CD31	2 66065-1-Ig	Mouse Mono	ELISA, IF, IHC, WB
CD38	60006-1-Ig	Mouse Mono	ELISA, IF, WB
CD43	66224-1-Ig	Mouse Mono	ELISA, IHC, WB
CD44	60224-1-Ig	Mouse Mono	ELISA, FC, IF, IHC, WB
CD68	66231-1-Ig	Mouse Mono	ELISA, FC, IHC
CD7	60209-2-Ig	Mouse Mono	ELISA, IHC, WB
CD71	66180-1-Ig	Mouse Mono	ELISA, FC, IF, IHC, IP, WB
CD9	60232-1-Ig	Mouse Mono	ELISA, IHC, WB
CDC6	66021-1-Ig	Mouse Mono	ELISA, IF, WB
CDK2	60312-1-Ig	Mouse Mono	ELISA, FC, IHC, WB
CDX2	60243-1-Ig	Mouse Mono	ELISA, WB
Ceruloplasmin	66156-1-Ig	Mouse Mono	ELISA, IHC, WB
CGB, hCG	60334-1-Ig	Mouse Mono	ELISA, IHC, WB
CHD4	66222-1-Ig	Mouse Mono	ELISA, IF, WB
Chk1	60277-1-Ig	Mouse Mono	ELISA, IHC, WB
CHOP; GADD153	60304-1-Ig	Mouse Mono	ELISA, WB
CHRNA7	60220-1-Ig	Mouse Mono	ELISA, WB
Chromogranin A	60135-1-Ig	Mouse Mono	ELISA, IHC, WB




00 This number shows the amount of times our antibody has been cited in a publication.


CISD2-Specific  
→ ERK1/2

More validation images available on our website. 



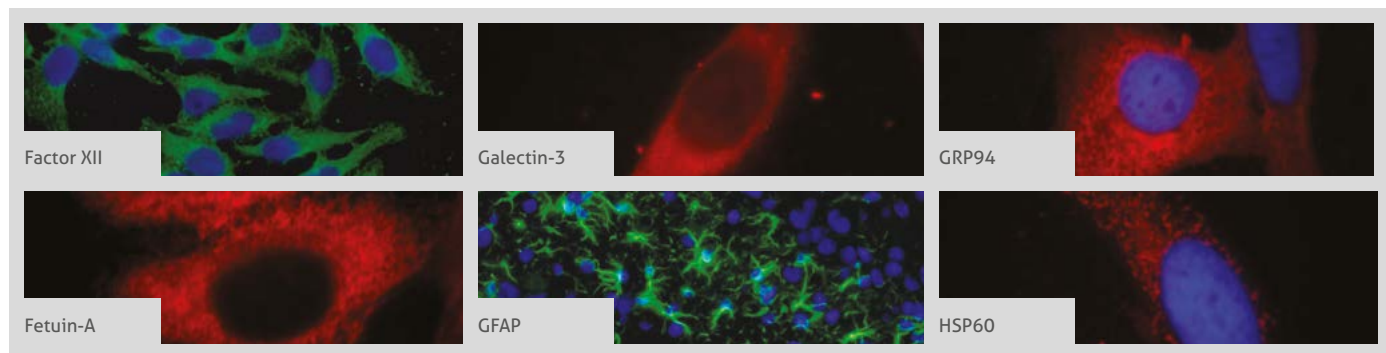
Antibody Name	Cat. No.	Type	Applications
CISD2-Specific	66082-1-Ig	Mouse Mono	ELISA, IF, IHC, WB
Claudin 18	66167-1-Ig	Mouse Mono	ELISA, IHC, IP
CLEC11A	60295-1-Ig	Mouse Mono	ELISA, IHC, WB
CLEC4G	66233-1-Ig	Mouse Mono	ELISA, WB
Clusterin	66109-1-Ig	Mouse Mono	ELISA, IHC, WB
CNN2	66244-1-Ig	Mouse Mono	ELISA, IHC, WB
CNPY2, MSAP	66173-1-Ig	Mouse Mono	ELISA, IF, IHC, WB
Cofilin	66057-1-Ig	Mouse Mono	ELISA, IF, IHC, WB
Complement factor B	66154-1-Ig	Mouse Mono	ELISA, IHC, WB
COTL1	60237-1-Ig	Mouse Mono	ELISA, IF, IHC, WB
COXIV	60251-1-Ig	Mouse Mono	ELISA, FC, IF, IHC, WB
COXIV	66110-1-Ig	Mouse Mono	ELISA, FC, IF, IHC, WB
CPT1A	66039-1-Ig	Mouse Mono	ELISA, FC, IHC, IP, WB
CPT1C	66072-1-Ig	Mouse Mono	ELISA, IHC, WB
Creatine Kinase MM-Specific	60177-1-Ig	Mouse Mono	ELISA, IF, IHC, WB
CREST	60314-1-Ig	Mouse Mono	ELISA, WB
CRP	66250-1-Ig	Mouse Mono	ELISA, IHC, WB
CRYBB1	60273-1-Ig	Mouse Mono	ELISA, WB
CSK	66115-1-Ig	Mouse Mono	ELISA, IF, WB
c-SRC	60315-1-Ig	Mouse Mono	ELISA, IF, IHC, WB
CTAGE1	 60087-1-Ig	Mouse Mono	ELISA, IF, IHC, WB
CTNNA1	66221-1-Ig	Mouse Mono	ELISA, IHC, WB
CUL4A	 66038-1-Ig	Mouse Mono	ELISA, IF, IHC, IP, WB
CX3CL1	60339-1-Ig	Mouse Mono	ELISA, IHC, WB
CXCL16	60123-1-Ig	Mouse Mono	ELISA, WB
CXCL8/IL8	 2 60141-2-Ig	Mouse Mono	ELISA, IHC, WB
CXCR3B-specific	 5 60065-1-Ig	Mouse Mono	ELISA, FC, IF, IHC, WB
CXCR4	 3 60042-1-Ig	Mouse Mono	ELISA, FC, WB
CXCR7	60216-1-Ig	Mouse Mono	ELISA, IHC, WB
CY5R3	66022-1-Ig	Mouse Mono	ELISA, IF, IHC, WB

Antibody Name	Cat. No.	Type	Applications
Cyclin D1	 60 60186-1-Ig	Mouse Mono	ELISA, WB
Cyclophilin B	66047-1-Ig	Mouse Mono	ELISA, IF, IHC, WB
CYP2D6	60297-1-Ig	Mouse Mono	ELISA, WB
Cytoglobin	60228-1-Ig	Mouse Mono	ELISA, IHC, WB
Cytokeratin 14	 60320-1-Ig	Mouse Mono	ELISA, IF, IHC, WB
Cytokeratin 15	60247-1-Ig	Mouse Mono	ELISA, IF, IHC, WB
Cytokeratin 18	66187-1-Ig	Mouse Mono	ELISA, FC, IF, IHC, WB
Cytokeratin 19	60187-1-Ig	Mouse Mono	ELISA, IHC, WB
Cytokeratin 20	60183-1-Ig	Mouse Mono	ELISA, IHC, WB
Cytokeratin 8	60274-1-Ig	Mouse Mono	ELISA, IHC, WB
DBC1	60336-1-Ig	Mouse Mono	ELISA, IF, WB
DDB1	66010-1-Ig	Mouse Mono	ELISA, IF, IHC, WB
DEK	66194-1-Ig	Mouse Mono	ELISA, IF, IHC, WB
Desmin	 2 60226-1-Ig	Mouse Mono	ELISA, IHC, WB
Desmocollin 2	60239-1-Ig	Mouse Mono	ELISA, WB
DGCR8	 3 60084-1-Ig	Mouse Mono	ELISA, IP, WB
DNAJB2	60204-1-Ig	Mouse Mono	ELISA, WB
DSE	60041-1-Ig	Mouse Mono	ELISA, WB
Dynamitin	60257-1-Ig	Mouse Mono	ELISA, IHC, WB
ECHS1	  2 66117-1-Ig	Mouse Mono	ELISA, IF, IHC, IP, WB
ECM1	66023-1-Ig	Mouse Mono	ELISA, IHC, WB
EEA1	66218-1-Ig	Mouse Mono	ELISA, IF
EEF1B2	60329-1-Ig	Mouse Mono	ELISA, IF, WB
EEF1D	60085-1-Ig	Mouse Mono	ELISA, IF, IHC, WB
EEF1D	60085-2-Ig	Mouse Mono	ELISA, IHC, IP, WB
EIF3D	66024-1-Ig	Mouse Mono	ELISA, IF, IHC, WB
EIF3M	66025-1-Ig	Mouse Mono	ELISA, IF, WB
ENTPD1	60323-1-Ig	Mouse Mono	ELISA, FC, IF, WB
EPLIN	66071-1-Ig	Mouse Mono	ELISA, IF, IHC, WB
ERAB	60069-1-Ig	Mouse Mono	ELISA, WB
ERK1/2	 3 66192-1-Ig	Mouse Mono	ELISA, IF, IHC, IP, WB

 00 This number shows the amount of times our antibody has been cited in a publication.



More validation images available on our website.



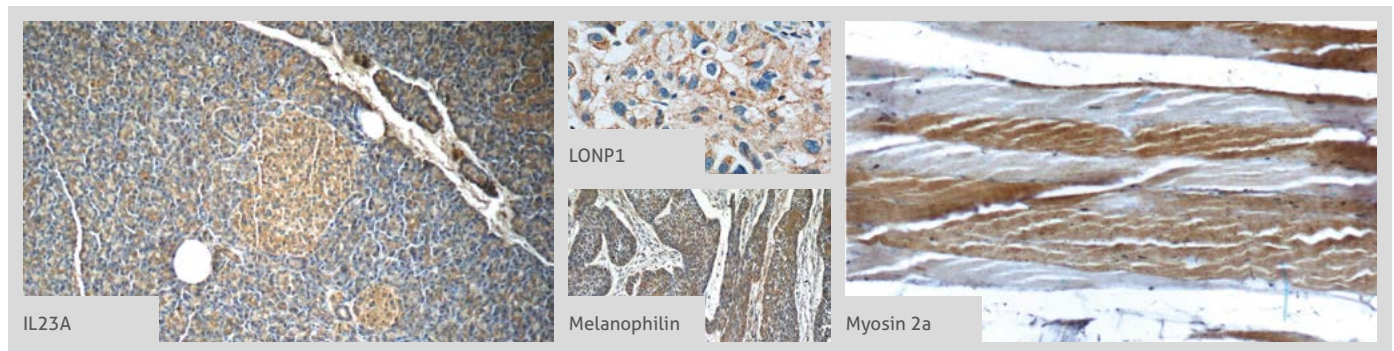
Antibody Name	Cat. No.	Type	Applications
ESR2	60197-1-Ig	Mouse Mono	ELISA, WB
EXOSC2	66099-1-Ig	Mouse Mono	ELISA, IF, IHC, WB
FABP3	60280-1-Ig	Mouse Mono	ELISA, WB
Factor XII	66089-1-Ig	Mouse Mono	ELISA, IF, IHC, WB
FAF1	60231-1-Ig	Mouse Mono	ELISA, WB
FAK	66258-1-Ig	Mouse Mono	ELISA, IF, WB
FAM3C	60282-1-Ig	Mouse Mono	ELISA, IF, IHC, WB
FAS/CD95	60196-1-Ig	Mouse Mono	ELISA, FC, IHC, WB
Fetuin-A	66094-1-Ig	Mouse Mono	ELISA, IF, IHC, IP, WB
FGB	66186-1-Ig	Mouse Mono	ELISA, WB
FGF12	60152-1-Ig	Mouse Mono	ELISA, WB
FGF18	60341-1-Ig	Mouse Mono	ELISA, WB
FGFR1	60325-1-Ig	Mouse Mono	ELISA, FC, IHC, WB
FHIT	66086-1-Ig	Mouse Mono	ELISA, IF, IHC, WB
Fibrinogen gamma chain	66158-1-Ig	Mouse Mono	ELISA, IF, IHC, WB
Fibromodulin	60108-1-Ig	Mouse Mono	ELISA, IHC, WB
Fibronectin	66042-1-Ig	Mouse Mono	ELISA, IF, IP, WB
Fibulin 5	60081-1-Ig	Mouse Mono	ELISA, IHC, WB
FKBP2	66091-1-Ig	Mouse Mono	ELISA, IHC, WB
FKBP52	66040-1-Ig	Mouse Mono	ELISA, FC, IF, IHC, WB
FKBP52	66040-2-Ig	Mouse Mono	ELISA, IF, IHC, WB
FKBPL	60030-1-Ig	Mouse Mono	ELISA, WB
Flag tag	60002-1-Ig	Mouse Mono	ELISA, IP, WB
Flag tag	66008-2-Ig	Mouse Mono	ELISA, IF, IP, WB
Follistatin	60060-1-Ig	Mouse Mono	ELISA, IF, IHC, WB
FOLR1	60307-1-Ig	Mouse Mono	ELISA, WB
FUS/TLS	60160-1-Ig	Mouse Mono	ELISA, IF, IHC, IP, WB
FUT8	66118-1-Ig	Mouse Mono	ELISA, IHC, WB
FUT9	60230-1-Ig	Mouse Mono	ELISA, IHC, WB
Galectin-1	60223-1-Ig	Mouse Mono	ELISA, IHC, WB
Galectin-3	60207-1-Ig	Mouse Mono	ELISA, IF, IHC, WB


Antibody Name	Cat. No.	Type	Applications
Gamma cystathionase	60234-1-Ig	Mouse Mono	ELISA, IF, IHC, WB
GAPDH	60004-1-Ig	Mouse Mono	ELISA, FC, IF, IHC, IP, WB
GATA1	60011-1-Ig	Mouse Mono	ELISA, IP, WB
GDI2	60078-1-Ig	Mouse Mono	ELISA, IF, IHC, WB
GEFT	66012-1-Ig	Mouse Mono	ELISA, IHC, WB
GFAP	60190-1-Ig	Mouse Mono	ELISA, IF, IHC, IP, WB
GFP tag	66002-1-Ig	Mouse Mono	ELISA, IF, IP, WB
GKN1	60130-1-Ig	Mouse Mono	ELISA, IHC, WB
GM2A	66080-1-Ig	Mouse Mono	ELISA, WB
GOSR2/Membrin	66134-1-Ig	Mouse Mono	ELISA, IHC, WB
GOT1	60317-1-Ig	Mouse Mono	ELISA, IHC, WB
GRP94	60012-1-Ig	Mouse Mono	ELISA, FC, IF, IHC, WB
GSNOR, ADH5	66193-1-Ig	Mouse Mono	ELISA, IF, IHC, WB
GST tag	66001-1-Ig	Mouse Mono	ELISA, IP, WB
GSTO1	60150-2-Ig	Mouse Mono	ELISA, IF, IHC, WB
HADHA	60250-1-Ig	Mouse Mono	ELISA, IF, IHC, WB
HA-Tag	66006-1-Ig	Mouse Mono	ELISA, IF, IP, WB
HBG1-Specific	66168-1-Ig	Mouse Mono	ELISA, IHC
HDAC1	66085-1-Ig	Mouse Mono	ELISA, IF, IHC, WB
HDGF	60064-1-Ig	Mouse Mono	ELISA, IF, IHC, WB
Hemoglobin epsilon-Specific	66151-1-Ig	Mouse Mono	ELISA, FC, WB
HER2/ErbB2	60311-1-Ig	Mouse Mono	ELISA, FC, IHC
HEXA	60337-1-Ig	Mouse Mono	ELISA, WB
HLA class I (HLA-A)	66013-1-Ig	Mouse Mono	ELISA, FC, IHC, WB
HP	66229-1-Ig	Mouse Mono	ELISA, WB
HPSE	66226-1-Ig	Mouse Mono	ELISA, IF, IHC, WB
HSP60	66041-1-Ig	Mouse Mono	ELISA, FC, IF, IHC, IP, WB
HSP70	66183-1-Ig	Mouse Mono	ELISA, IF, IHC, WB
HSP90	60318-1-Ig	Mouse Mono	ELISA, FC, IHC, WB
Human IgA	60099-1-Ig	Mouse Mono	ELISA, IHC, WB


00 This number shows the amount of times our antibody has been cited in a publication.



IA-2/PTPRN  
→ LPCAT1

More validation images available on our website. 



Antibody Name	Cat. No.	Type	Applications
IA-2/PTPRN	66045-1-Ig	Mouse Mono	ELISA, IF, IHC, WB
ICAM-1	<b>5</b> 60299-1-Ig	Mouse Mono	ELISA, FC, IF, IHC, WB
IDH1	66197-1-Ig	Mouse Mono	ELISA, IF, IHC, WB
Iduronate 2 sulfatase	66112-1-Ig	Mouse Mono	ELISA, IF, IHC, WB
IFITM1-Specific	<b>14</b> 60074-1-Ig	Mouse Mono	ELISA, FC, IF, IHC, IP, WB
IFITM2-specific	66137-1-Ig	Mouse Mono	ELISA, FC, WB
IFITM3	<b>2</b> 66081-1-Ig	Mouse Mono	ELISA, FC, IF, IHC, WB
IFT88	60227-1-Ig	Mouse Mono	ELISA, IHC, IP, WB
IGBP1	60256-1-Ig	Mouse Mono	ELISA, IHC, WB
IL1 beta	60136-1-Ig	Mouse Mono	ELISA, IHC, IP, WB
IL-10	60269-1-Ig	Mouse Mono	ELISA, IHC, WB
IL12A	60324-1-Ig	Mouse Mono	ELISA, WB
IL-16	66145-1-Ig	Mouse Mono	ELISA, WB
IL-17	66148-1-Ig	Mouse Mono	ELISA, FC, WB
IL-17D	66143-1-Ig	Mouse Mono	ELISA, WB
IL-17F	60245-1-Ig	Mouse Mono	ELISA, WB
IL-19	60278-1-Ig	Mouse Mono	ELISA, IHC, WB
IL1F10	60319-1-Ig	Mouse Mono	ELISA, WB
IL1F5	60298-1-Ig	Mouse Mono	ELISA, WB
IL1F8	60290-1-Ig	Mouse Mono	ELISA, IHC, WB
IL1R2	60262-1-Ig	Mouse Mono	ELISA, IF, WB
IL2	60306-1-Ig	Mouse Mono	ELISA, WB
IL20RB	60221-1-Ig	Mouse Mono	ELISA, WB
IL22RA2	66190-1-Ig	Mouse Mono	ELISA, IHC, WB
IL23A	 66196-1-Ig	Mouse Mono	ELISA, IHC, WB
IL-27	66164-1-Ig	Mouse Mono	ELISA, IHC, WB
IL-28A	60270-1-Ig	Mouse Mono	ELISA, IHC, WB
IL-29	66163-1-Ig	Mouse Mono	ELISA, WB
IL33	66235-1-Ig	Mouse Mono	ELISA, IF, IHC, WB
IL37	60296-1-Ig	Mouse Mono	ELISA, IHC, WB








Antibody Name	Cat. No.	Type	Applications
IL-4	66142-1-Ig	Mouse Mono	ELISA, IHC, WB
IL-6	66146-1-Ig	Mouse Mono	ELISA, IHC, WB
IL-7	60206-1-Ig	Mouse Mono	ELISA, FC, IF, IHC, WB
IL9	66144-1-Ig	Mouse Mono	ELISA, IHC, WB
IMP3	66247-1-Ig	Mouse Mono	ELISA, IF, IHC, WB
Inhibin Beta A	60015-2-Ig	Mouse Mono	ELISA, WB
Insulin	66198-1-Ig	Mouse Mono	ELISA, IHC
Integrin alpha-3	66070-1-Ig	Mouse Mono	ELISA, FC, IF, WB
Interferon alpha	66162-1-Ig	Mouse Mono	ELISA, WB
IRF5	60088-1-Ig	Mouse Mono	ELISA, IF, IHC, IP, WB
ITM2C	60095-1-Ig	Mouse Mono	ELISA, IF, WB
IVD	66032-1-Ig	Mouse Mono	ELISA, IF, IHC, WB
JNK	66210-1-Ig	Mouse Mono	ELISA, IF, IHC, WB
KCNN4	60276-1-Ig	Mouse Mono	ELISA, WB
KEAP1	<b>12</b> 60027-1-Ig	Mouse Mono	ELISA, IF, IHC, WB
KIFAP3	60266-1-Ig	Mouse Mono	ELISA, IHC, WB
Kininogen 1	66123-1-Ig	Mouse Mono	ELISA, IF, IHC, WB
KLF15	66185-1-Ig	Mouse Mono	ELISA, WB
KLK3,PSA	60338-1-Ig	Mouse Mono	ELISA, IHC
KRAS	60309-1-Ig	Mouse Mono	ELISA, FC, IHC, WB
Kynurenine 3 monooxygenase	<b>2</b> 60029-1-Ig	Mouse Mono	ELISA, IF, IHC, WB
Lamin B1	<b>14</b> 66095-1-Ig	Mouse Mono	ELISA, FC, IF, IP, WB
LAMR1, RPSA	60068-1-Ig	Mouse Mono	ELISA, IHC, WB
LBP	66181-1-Ig	Mouse Mono	ELISA, IHC, WB
LC3A/B	<b>10</b> 66139-1-Ig	Mouse Mono	ELISA, FC, IF, IHC, WB
LCK	60162-1-Ig	Mouse Mono	ELISA, WB
LGALS3BP	60066-1-Ig	Mouse Mono	ELISA, IF, IHC, IP, WB
LIN28	60344-1-Ig	Mouse Mono	ELISA, IHC, WB
liver Arginase	66129-1-Ig	Mouse Mono	ELISA, IHC, WB
LONP1	 66043-1-Ig	Mouse Mono	ELISA, IF, IHC, WB
LPCAT1	66044-1-Ig	Mouse Mono	ELISA, IF, WB






Antibody Name	Cat. No.	Type	Applications
LYN	60211-1-Ig	Mouse Mono	ELISA, IHC, WB
MAD2L1	66014-1-Ig	Mouse Mono	ELISA, IHC, WB
MAGEA3	60054-1-Ig	Mouse Mono	ELISA, IHC, WB
MALT1	66225-1-Ig	Mouse Mono	ELISA, IF, IHC, WB
Mammaglobin A	66237-1-Ig	Mouse Mono	ELISA, IHC
MAOB	66107-1-Ig	Mouse Mono	ELISA, IHC, WB
MAPK13	60252-1-Ig	Mouse Mono	ELISA, WB
MBIP	66102-1-Ig	Mouse Mono	ELISA, IHC, IP, WB
MBP tag	66003-1-Ig	Mouse Mono	ELISA, IP, WB
MCL1	<b>3</b> 66026-1-Ig	Mouse Mono	ELISA, IF, IHC, WB
MCM2	66204-1-Ig	Mouse Mono	ELISA, IHC, WB
MCRS1	60215-1-Ig	Mouse Mono	ELISA, WB
Melanophilin	 66092-1-Ig	Mouse Mono	ELISA, IF, IHC, WB
MEST	60263-1-Ig	Mouse Mono	ELISA, IHC, WB
MGEA5	66033-1-Ig	Mouse Mono	ELISA, IF, IHC, WB
MGP	60055-1-Ig	Mouse Mono	ELISA, IHC, WB
MME, CD10	60034-3-Ig	Mouse Mono	ELISA, IHC, WB
MMS19	66049-1-Ig	Mouse Mono	ELISA, IF, IHC, IP, WB
MPO	66177-1-Ig	Mouse Mono	ELISA, IHC, WB
MSH2	60161-1-Ig	Mouse Mono	ELISA, IHC, WB
MSH6	66172-1-Ig	Mouse Mono	ELISA, IF, IHC, IP, WB
MTA2	66195-1-Ig	Mouse Mono	ELISA, FC, IF, IHC, WB
MUC16, CA125	60261-1-Ig	Mouse Mono	ELISA, IHC
MYC tag	<b>7</b> 60003-2-Ig	Mouse Mono	ELISA, IF, IP, WB
MYC tag	<b>9</b> 66004-1-Ig	Mouse Mono	ELISA, IF, IP, WB
MYH9	60233-1-Ig	Mouse Mono	ELISA, WB
MYOD1	66214-1-Ig	Mouse Mono	ELISA, WB
Myoglobin	66205-1-Ig	Mouse Mono	ELISA, IHC, WB
Myosin 2a	 66212-1-Ig	Mouse Mono	ELISA, IHC, WB
Myosin Light Chain 2	60229-1-Ig	Mouse Mono	ELISA, IF, IHC, WB
NAPRT1	66159-1-Ig	Mouse Mono	ELISA, IF, IHC, WB
Napsin A	60259-1-Ig	Mouse Mono	ELISA, IF, IHC
N-cadherin	66219-1-Ig	Mouse Mono	ELISA, IHC, WB
NCALD	66088-1-Ig	Mouse Mono	ELISA, IHC, WB
NCAM1/CD56	60238-1-Ig	Mouse Mono	ELISA, IHC, WB
NDUFA4L2	66050-1-Ig	Mouse Mono	ELISA, IF, IHC, WB
NDUF55	66053-1-Ig	Mouse Mono	ELISA, IHC, WB
NENF	60131-1-Ig	Mouse Mono	ELISA, IHC, WB
NESP55, GNAS	66253-1-Ig	Mouse Mono	ELISA, IHC, WB

Antibody Name	Cat. No.	Type	Applications
Neuropilin 1	<b>2</b> 60067-1-Ig	Mouse Mono	ELISA, IF, IHC, WB
NF200	60331-1-Ig	Mouse Mono	ELISA, IF, IHC, WB
NF-L	60189-1-Ig	Mouse Mono	ELISA, IHC, WB
NINJ2	66202-1-Ig	Mouse Mono	ELISA, IHC, WB
NOB1	66048-1-Ig	Mouse Mono	ELISA, IHC, WB
NR1H3	60134-1-Ig	Mouse Mono	ELISA, IF, WB
NR2F6	60117-1-Ig	Mouse Mono	ELISA, IHC, WB
NR2F6	60117-2-Ig	Mouse Mono	ELISA, IHC, WB
NSE	66150-1-Ig	Mouse Mono	ELISA, IF, IHC, WB
NTF2	66063-1-Ig	Mouse Mono	ELISA, IF, IHC, WB
NUMB	60137-1-Ig	Mouse Mono	ELISA, IF, IHC, WB
NUMBL	66155-1-Ig	Mouse Mono	ELISA, IHC, WB
OCT4	60242-1-Ig	Mouse Mono	ELISA, IHC, WB
OPTN	60293-1-Ig	Mouse Mono	ELISA, IHC, WB
ORAI1	66223-1-Ig	Mouse Mono	ELISA, IHC, WB
ORM1/2	66097-1-Ig	Mouse Mono	ELISA, IF, IHC, WB
ORM2-Specific	66217-1-Ig	Mouse Mono	ELISA, IF, WB
OXA1L	<b>2</b> 66128-1-Ig	Mouse Mono	ELISA, IHC, WB
p120 Catenin	66208-1-Ig	Mouse Mono	ELISA, IHC, WB
P21	<b>3</b> 60214-1-Ig	Mouse Mono	ELISA, WB
p38 MAPK	66234-1-Ig	Mouse Mono	ELISA, IHC, WB
P4HA1	66101-1-Ig	Mouse Mono	ELISA, IF, IHC, WB
p504S, AMACR	60240-1-Ig	Mouse Mono	ELISA, WB
P53	60283-1-Ig	Mouse Mono	ELISA, IHC, IP, WB
P62/SQSTM1	<b>2</b> 66184-1-Ig	Mouse Mono	ELISA, IF, IHC, WB
PA2G4	66055-1-Ig	Mouse Mono	ELISA, IF, IHC, WB
PAIP1	60050-1-Ig	Mouse Mono	ELISA, IF, IHC, WB
PAX1-Specific	60217-1-Ig	Mouse Mono	ELISA, WB
PAX4	66064-1-Ig	Mouse Mono	ELISA, WB
PAX8	60145-4-Ig	Mouse Mono	ELISA, IHC, WB
PAX8-Specific	66073-1-Ig	Mouse Mono	ELISA, IHC, WB
PCMT1	60172-1-Ig	Mouse Mono	ELISA, IF, WB
PCNA	<b>5</b> 60097-1-Ig	Mouse Mono	ELISA, FC, IF, IHC, IP, WB
PD-1/CD279	66220-1-Ig	Mouse Mono	ELISA, IF, IHC, WB
PDCD4	66100-1-Ig	Mouse Mono	ELISA, IHC, WB
PDHA1	<b>2</b> 66119-1-Ig	Mouse Mono	ELISA, FC, IF, IHC, IP, WB
PD-L1/CD274	66248-1-Ig	Mouse Mono	ELISA, FC, IF, IHC, WB
peroxiredoxin 2	60202-1-Ig	Mouse Mono	ELISA, IF, IHC, WB
PFN2	60094-2-Ig	Mouse Mono	ELISA, IHC, WB

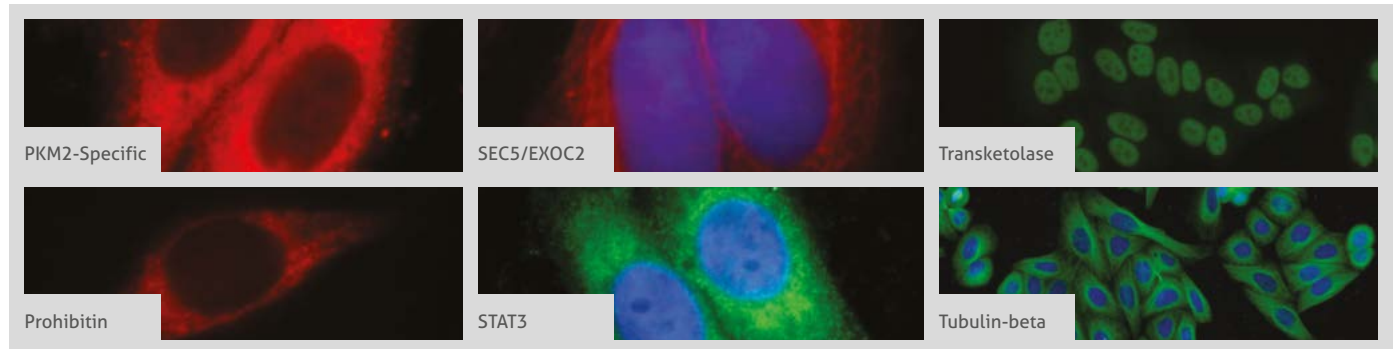
**00** This number shows the amount of times our antibody has been cited in a publication.

**PGM1**  
 → **STIM1**

Antibody Name	Cat. No.	Type	Applications
PGM1	66105-1-Ig	Mouse Mono	ELISA, IF, IHC, WB
PGRMC2	60249-1-Ig	Mouse Mono	ELISA, IHC, WB
phospho (403/404) TDP43	66079-1-Ig	Mouse Mono	ELISA, IF, WB
PHOX2B	66254-1-Ig	Mouse Mono	ELISA, IHC, WB
PI3K p85 (alpha)	60225-1-Ig	Mouse Mono	ELISA, IF, IHC, IP, WB
Pikachurin	66232-1-Ig	Mouse Mono	ELISA, WB
PKM2-specific	 60268-1-Ig	Mouse Mono	ELISA, FC, IF, IHC, IP, WB
PLAA	60244-1-Ig	Mouse Mono	ELISA, IHC, WB
PLAP	60294-1-Ig	Mouse Mono	ELISA, IHC, WB
PLOD3	60058-1-Ig	Mouse Mono	ELISA, IF, IHC, IP, WB
PMS2	66075-1-Ig	Mouse Mono	ELISA, IHC, WB
PPAR gamma	60127-1-Ig	Mouse Mono	ELISA, IHC, WB
PPARD	60193-1-Ig	Mouse Mono	ELISA, WB
PRDX4	60286-1-Ig	Mouse Mono	ELISA, IF, IHC, WB
Prealbumin/transsthyretin	66108-1-Ig	Mouse Mono	ELISA, IHC, WB
Pre-IL18	60070-1-Ig	Mouse Mono	ELISA, IF, WB
Prohibitin	 60092-1-Ig	Mouse Mono	ELISA, IF, IHC, WB
Prostein	60343-1-Ig	Mouse Mono	ELISA, IHC, WB
Protein C inhibitor	66030-1-Ig	Mouse Mono	ELISA, IHC, WB
P-selectin	60322-1-Ig	Mouse Mono	ELISA, IHC, IP, WB
PSMD4	66179-1-Ig	Mouse Mono	ELISA, IF, IHC, WB
PTEN	 60300-1-Ig	Mouse Mono	ELISA, IF, IHC, WB
Rab18	60057-1-Ig	Mouse Mono	ELISA, IF, IHC, WB
RAB27A	66058-1-Ig	Mouse Mono	ELISA, IF, IHC, WB
RABEP2	60125-1-Ig	Mouse Mono	ELISA, IHC, WB
Rac1	 66122-1-Ig	Mouse Mono	ELISA, IF, IHC, IP, WB
RAC2	 60077-1-Ig	Mouse Mono	ELISA, IHC, WB
RACGAP1	66056-1-Ig	Mouse Mono	ELISA, IF, IHC, WB
RBAP48	66060-1-Ig	Mouse Mono	ELISA, FC, IHC, WB
RBBP9	66015-1-Ig	Mouse Mono	ELISA, IF, IHC, WB
RBBP9	66015-2-Ig	Mouse Mono	ELISA, IHC, WB
RBM15	 66059-1-Ig	Mouse Mono	ELISA, IF, IP, WB
RBM4	60292-1-Ig	Mouse Mono	ELISA, IF, IHC, WB
RBP4	66104-1-Ig	Mouse Mono	ELISA, FC, IHC, WB
RBPJ	66132-1-Ig	Mouse Mono	ELISA, WB
RCAS1	66170-1-Ig	Mouse Mono	ELISA, IHC, WB
RENALASE	 60128-1-Ig	Mouse Mono	ELISA, IHC, WB
RISC	60086-1-Ig	Mouse Mono	ELISA, IF, IHC, WB

Antibody Name	Cat. No.	Type	Applications
RND3	66228-1-Ig	Mouse Mono	ELISA, WB
RNH1	66028-1-Ig	Mouse Mono	ELISA, WB
RPL3	66130-1-Ig	Mouse Mono	ELISA, IF, IHC, WB
RPS3	 66046-1-Ig	Mouse Mono	ELISA, IF, IHC, IP, WB
RRM1	60073-1-Ig	Mouse Mono	ELISA, FC, IHC, IP, WB
RRM1	60073-2-Ig	Mouse Mono	ELISA, IF, IHC, IP, WB
RXRA	60198-1-Ig	Mouse Mono	ELISA, WB
S1 tag	66165-1-Ig	Mouse Mono	ELISA, WB
S100A10	66227-1-Ig	Mouse Mono	ELISA, IHC, WB
S100A11	 60024-1-Ig	Mouse Mono	Antibody Neutralization, ELISA, IHC, WB
S100A6	66098-1-Ig	Mouse Mono	ELISA, IF, IHC, WB
SALL4	66236-1-Ig	Mouse Mono	ELISA, WB
SEC5/EXOC2	  66011-1-Ig	Mouse Mono	ELISA, IF, IP, WB
SECTM1	60281-1-Ig	Mouse Mono	ELISA, FC, IHC, WB
SEPT2	 60075-1-Ig	Mouse Mono	ELISA, IF, IHC, WB
SEPT8	66188-1-Ig	Mouse Mono	ELISA, WB
SERPINA10	60113-1-Ig	Mouse Mono	ELISA, IF, IHC, WB
SERPINE2	66203-1-Ig	Mouse Mono	ELISA, IF, IHC, WB
Serum amyloid P component	66084-1-Ig	Mouse Mono	ELISA, IHC, WB
SGTA	60305-1-Ig	Mouse Mono	ELISA, IF, WB
SIRT1	60303-1-Ig	Mouse Mono	ELISA, IF, IHC, IP, WB
SMARCD1	66116-1-Ig	Mouse Mono	ELISA, WB
SMARCE1	66182-1-Ig	Mouse Mono	ELISA, IF, IHC, WB
SMMHC	60222-1-Ig	Mouse Mono	ELISA, WB
SMMHC	60222-2-Ig	Mouse Mono	ELISA, WB
SMN (Human, Mouse, Rat)	60154-2-Ig	Mouse Mono	ELISA, WB
SMN (Human-Specific)	60154-1-Ig	Mouse Mono	ELISA, IF, IHC, IP, WB
SMN-Exon7	60255-1-Ig	Mouse Mono	ELISA, IF, WB
SNAP25	60159-1-Ig	Mouse Mono	ELISA, IF, IP, WB
SND1	60265-1-Ig	Mouse Mono	ELISA, IF, IHC, IP, WB
SNRPD2	66111-1-Ig	Mouse Mono	ELISA, WB
SRP9	66068-1-Ig	Mouse Mono	ELISA, WB
ST2	60112-1-Ig	Mouse Mono	ELISA, IHC, WB
ST6GALNAC6	66209-1-Ig	Mouse Mono	ELISA, IHC, WB
Stanniocalcin 2	60063-1-Ig	Mouse Mono	ELISA, IF, IHC, WB
STAT3	 60199-1-Ig	Mouse Mono	ELISA, IF, IHC, IP, WB
Stathmin	66090-1-Ig	Mouse Mono	ELISA, IF, IHC, WB
STIM1	66189-1-Ig	Mouse Mono	ELISA, IHC, WB

More validation images available on our website.



Antibody Name	Cat. No.	Type	Applications
STMN3	66152-1-Ig	Mouse Mono	ELISA, WB
STOML2	<b>2</b> 60052-1-Ig	Mouse Mono	ELISA, IHC, IP, WB
STXBP2	66238-1-Ig	Mouse Mono	ELISA, IF, IHC, IP, WB
SULT1A1	60076-1-Ig	Mouse Mono	ELISA, WB
SULT4A1	66106-1-Ig	Mouse Mono	ELISA, IHC, WB
Synaptophysin	60191-1-Ig	Mouse Mono	ELISA, IF, WB
Syntaxin 6	60059-1-Ig	Mouse Mono	ELISA, IHC, WB
TBP	66166-1-Ig	Mouse Mono	ELISA, IF, IHC, IP, WB
TDP-43	<b>36</b> 60019-2-Ig	Mouse Mono	ELISA, FC, IF, IHC, IP, WB
TELO2	66077-1-Ig	Mouse Mono	ELISA, IF, IHC, IP, WB
TFIP11	66114-1-Ig	Mouse Mono	ELISA, IF, IHC, WB
TGFBI/BIGH3	<b>4</b> 60007-1-Ig	Mouse Mono	ELISA, IHC, IP, WB
Thyroglobulin	60272-1-Ig	Mouse Mono	ELISA, IHC, WB
TIMM44	66149-1-Ig	Mouse Mono	ELISA, IHC, WB
TLE1	66216-1-Ig	Mouse Mono	ELISA, IHC, WB
TLE3	66083-1-Ig	Mouse Mono	ELISA, IHC, IP, WB
TMEM106B	60333-1-Ig	Mouse Mono	ELISA, IHC, WB
TMEM70	60195-1-Ig	Mouse Mono	ELISA, IHC, WB
TNF alpha	<b>12</b> 60291-1-Ig	Mouse Mono	ELISA, IHC, WB
TNFAIP1	60327-1-Ig	Mouse Mono	ELISA, WB
TNFR1	60192-1-Ig	Mouse Mono	ELISA, FC, IHC, WB
TP63	60332-1-Ig	Mouse Mono	ELISA, WB
TPI1	60036-2-Ig	Mouse Mono	ELISA, WB
TPPII	66017-1-Ig	Mouse Mono	ELISA, FC, IF, IHC, WB
TPSAB1	66174-1-Ig	Mouse Mono	ELISA, IHC, WB
transcription termination factor-Specific	60235-1-Ig	Mouse Mono	ELISA, WB
Transferrin	66171-1-Ig	Mouse Mono	ELISA, IHC, WB
Transgelin 2	60044-1-Ig	Mouse Mono	ELISA, IHC, IP, WB
transgelin/SM22	60213-1-Ig	Mouse Mono	ELISA, IHC, WB
Transketolase	<b>6</b> 66016-1-Ig	Mouse Mono	ELISA, FC, IF, IHC, WB

Antibody Name	Cat. No.	Type	Applications
TRAPPC9, NIBP	66131-1-Ig	Mouse Mono	ELISA, IHC, WB
TRIM44	66249-1-Ig	Mouse Mono	ELISA, IF, WB
TRIP6	60205-1-Ig	Mouse Mono	ELISA, FC, IHC, WB
TRPC4AP	66138-1-Ig	Mouse Mono	ELISA, IHC, WB
TST	66018-1-Ig	Mouse Mono	ELISA, IHC, WB
TTF1	66034-1-Ig	Mouse Mono	ELISA, IHC, WB
TTL	66076-1-Ig	Mouse Mono	ELISA, IHC, WB
Tubulin-beta	<b>6</b> 66240-1-Ig	Mouse Mono	ELISA, IF, IHC, IP, WB
U2AF35	60289-1-Ig	Mouse Mono	ELISA, IHC, IP, WB
UBC9	60201-1-Ig	Mouse Mono	ELISA, IHC, WB
UBE2C	66087-1-Ig	Mouse Mono	ELISA, IF, IHC, WB
UBE3A	60038-1-Ig	Mouse Mono	ELISA, IHC, WB
UCHL1	66230-1-Ig	Mouse Mono	ELISA, IF, IHC, WB
USP1	66069-1-Ig	Mouse Mono	ELISA, IHC, WB
USP13	66176-1-Ig	Mouse Mono	ELISA, IF, IHC, WB
USP5	66213-1-Ig	Mouse Mono	ELISA, WB
V5-tag	<b>3</b> 66007-1-Ig	Mouse Mono	ELISA, IP, WB
VAPB	66191-1-Ig	Mouse Mono	ELISA, IF, IHC, WB
VCP	60316-1-Ig	Mouse Mono	ELISA, IF, IHC, WB
Villin	66096-1-Ig	Mouse Mono	ELISA, IF, IHC, IP, WB
Vimentin	<b>2</b> 60330-1-Ig	Mouse Mono	ELISA, IF, IHC, WB
Vitamin D binding protein	66175-1-Ig	Mouse Mono	ELISA, WB
WTAP	<b>3</b> 60188-1-Ig	Mouse Mono	ELISA, IF, IHC, WB (siRNA), WB
ZAP70	60200-1-Ig	Mouse Mono	ELISA, IHC, WB
ZAP70	60200-2-Ig	Mouse Mono	ELISA, WB
Zyxin	60254-1-Ig	Mouse Mono	ELISA, IF, IHC, WB

# CONTACT US

## Proteintech Group *US Head Office*

**PHONE** 1 (888) 4PTGLAB  
(1-888-478-4522)  
(toll free in USA),  
or 1(312) 455-8498  
(outside USA)

**FAX** 1 (312) 455-8408

**ADDRESS** Proteintech Group, Inc.  
5400 Pearl Street, Suite 300,  
Rosemont, IL 60018, USA

**EMAIL** proteintech@ptglab.com

## Proteintech Europe *United Kingdom*

**PHONE** +44 (161) 8393007

**FAX** +44 (161) 2413103

**ADDRESS** Proteintech Europe, Ltd.  
4th Floor,  
196 Deansgate,  
Manchester, M3 3WF

**EMAIL** europe@ptglab.com

## Proteintech Europe *Germany*

**EMAIL** germany@ptglab.com  
**Sales and technical support only.**

## Proteintech *China Office*

**PHONE** 027-87531629  
or 4006-900-926

**FAX** 027-87531627

**ADDRESS** Wuhan Sanying Biotechnologies  
D3-3, No.666 Gaoxin Avenue,  
Wuhan East Lake Hi-tech Development Zone  
Wuhan, Hubei, P.R.C

**EMAIL** service@ptglab.com

## Support

Available 24 hours via Live Chat and 9-5 (CDT) via phone.

Email support also available.

**LIVE CHAT**  
[www.ptglab.com](http://www.ptglab.com)

**TWITTER**  
[@proteintech](https://twitter.com/proteintech)

**BLOG**  
[www.ptglab.com/news/blog](http://www.ptglab.com/news/blog)

**YOUTUBE**  
[www.youtube.com/Proteintech](http://www.youtube.com/Proteintech)



We are ISO 9001 and  
ISO 13485 accredited.



