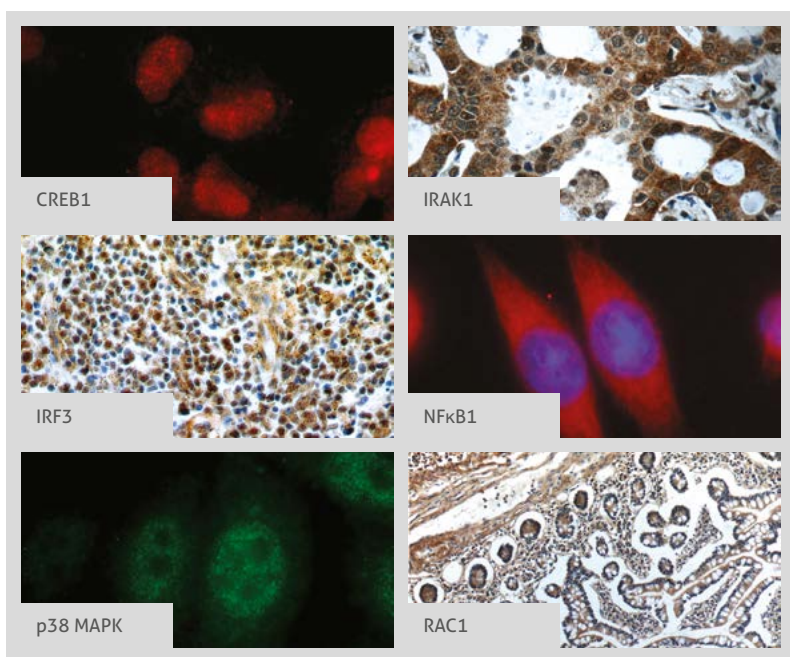


# TOLL-LIKE RECEPTOR PATHWAY



Legend	
—	Association
→	Directly Activates
⊣	Inhibits

For more information or other pathways visit [ptglab.com](http://ptglab.com)

# RELATED PRODUCTS

Antibody Name	Catalog Number	Type	Applications
API1, JUN, P39	10024-2-AP	Rabbit Poly	ELISA, IF, IHC, IP, WB
ATF2	14834-1-AP	Rabbit Poly	ELISA, IHC, WB
BLK	10510-1-AP	Rabbit Poly	ELISA, IHC, IP, WB
CD14	17000-1-AP	Rabbit Poly	ELISA, FC, IF, IHC, WB
CREB1	12208-1-AP	Rabbit Poly	ELISA, FC, IF, IHC, IP, WB
IKKβ/IKK1	15649-2-AP	Rabbit Poly	ELISA, IF, WB
IRAK1	10478-2-AP	Rabbit Poly	ELISA, FC, IF, IHC, IP, WB
IRAK4	18221-1-AP	Rabbit Poly	ELISA, IF, WB
IRF3	11312-1-AP	Rabbit Poly	ELISA, FC, IF, IHC, IP, WB
IRF7	22392-1-AP	Rabbit Poly	ELISA, IHC, IP, WB
IRF8	18977-1-AP	Rabbit Poly	ELISA, IHC, WB
JNK	10023-1-AP	Rabbit Poly	ELISA, IF, IHC, IP, WB
LTA	19157-1-AP	Rabbit Poly	ELISA, IF, WB
MD2	11784-1-AP	Rabbit Poly	ELISA, IHC, WB
MKK7	55030-1-AP	Rabbit Poly	ELISA, IF, IHC, WB
NF-κB1	14220-1-AP	Rabbit Poly	ELISA, IF, IP, WB
p38 MAPK	14064-1-AP	Rabbit Poly	ELISA, IF, IHC, WB

Antibody Name	Catalog Number	Type	Applications
PIK3CA/PI3K	20383-1-AP	Rabbit Poly	ELISA, FC, IHC, WB
RAC1	24072-2-AP	Rabbit Poly	ELISA, IF, IHC, WB
RIP1	18443-1-AP	Rabbit Poly	ELISA, IHC, IP, WB
RIP2	15366-1-AP	Rabbit Poly	ELISA, WB
TAB1	14819-1-AP	Rabbit Poly	ELISA, IF, WB
TAB2	14410-1-AP	Rabbit Poly	ELISA, FC, IF, IHC, IP, WB
TLR3	17766-1-AP	Rabbit Poly	ELISA, FC, IHC
TLR4	19811-1-AP	Rabbit Poly	ELISA, IHC, WB
TLR5	19810-1-AP	Rabbit Poly	ELISA, IHC, IP, WB
TLR7	17232-1-AP	Rabbit Poly	ELISA, IF, WB
TNKS	18030-1-AP	Rabbit Poly	ELISA, IF, IHC, WB
TOLLIP	11315-1-AP	Rabbit Poly	ELISA, IF, IHC, WB
TRAF6	12809-1-AP	Rabbit Poly	ELISA, IF, IHC, WB
TRAM1	12705-1-AP	Rabbit Poly	ELISA, IF, IHC, WB
UBC13/UBE2N	10243-1-AP	Rabbit Poly	ELISA, IHC, IP, WB
UBE2V1	10207-2-AP	Rabbit Poly	ELISA, WB

This number shows the amount of times our antibody has been cited in a publication.

## CONTACT DETAILS

[www.ptglab.com](http://www.ptglab.com)

### PROTEINTECH GROUP

US Head Office

A: Proteintech Group, Inc.  
5400 Pearl Street,  
Rosemont, IL, 60018,  
USA  
T: 1 (888) 4PTGLAB,  
(1-888-478-4522)  
(toll free in USA),  
or 1(312) 455-8498  
(outside USA)  
F: 1 (312) 455-8408  
E: [proteintech@ptglab.com](mailto:proteintech@ptglab.com)

### PROTEINTECH EUROPE

United Kingdom

A: Proteintech Europe, Inc.  
4th Floor  
196 Deansgate  
Manchester  
M3 3WF  
T: +44 (161) 839-3007  
F: +44 (161) 241-3103  
E: [europe@ptglab.com](mailto:europe@ptglab.com)

### PROTEINTECH China Office

China Office

A: Wuhan Sanying Biotechnologies,  
D3-3, No.666 Gaolin Avenue,  
Wuhan East Lake Hi-tech  
Development Zone  
Wuhan, Hubei, P.R.C  
T: 027-87533629  
or 4006-900-926  
F: 027-87533627  
E: [service@ptglab.com](mailto:service@ptglab.com)

