

À des fins de recherche uniquement

# Anticorps Monoclonal anti-CD25

Numéro de catalogue: PE-65137



## Informations de base

Numéro de catalogue:	PE-65137	Numéro d'acquisition GenBank:	BC114437	Méthode de purification:	Purification par affinité
Taille:	100ug, 0.2 mg/ml	Identification du gène (NCBI):	16184	CloneNo.:	PC61.5
Hôte:	Rat	Nom complet:	interleukin 2 receptor, alpha chain	Excitation/Emission maxima wavelengths:	496 nm, 565 nm / 578 nm
Isotype:	IgG1, lambda				

## Applications

Applications testées:  
FC

Spécificité de l'espèce:  
souris

## Informations générales

Proliferation of T lymphocytes is triggered by the interaction of IL-2 with its specific receptor following T lymphocyte activation. The receptor for IL-2 has three forms, generated by different combinations of three different proteins, the alpha chain (IL-2R alpha), the beta chain (IL-2R beta), and the gamma chain (IL-2R gamma) (PMID: 8476561). IL-2R alpha (also known as CD25) is a type I transmembrane protein present on activated T cells, activated B cells, some thymocytes, myeloid precursors, and oligodendrocytes. CD25 is also found on natural CD4<sup>+</sup>Foxp3<sup>+</sup> Treg cells (PMID: 22585674).

## Stockage

Stockage:  
Store at 2-8°C. Avoid exposure to light. Stable for one year after shipment.

Tampon de stockage:  
Tampon à base de phosphate avec azoture de sodium à 0,09 % et gélatine à 0,1 %, pH 7,2.

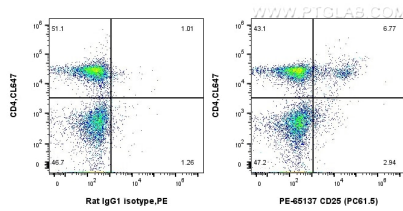
For technical support and original validation data for this product please contact:

T: 1 (888) 4PTGLAB (1-888-478-4522) (toll free in USA), or 1(312) 455-8498 (outside USA)

E: [proteintech@ptglab.com](mailto:proteintech@ptglab.com)  
W: [ptglab.com](http://ptglab.com)

This product is exclusively available under Proteintech Group brand and is not available to purchase from any other manufacturer.

## Données de validation sélectionnées



1X10<sup>6</sup> mouse splenocytes were surface co-stained with Coralite® Plus 647 Anti-Human CD4 and 0.5 ug PE Anti-Mouse CD25 (PE-65137, Clone:PC61.5) or 0.5 ug PE Rat IgG1 Isotype Control (HRPN) (PE-65212, Clone: HRPN). Cells were not fixed.