

À des fins de recherche uniquement

Anticorps Monoclonal anti-CD8a

Numéro de catalogue: FITC-65205



Informations de base

Numéro de catalogue: FITC-65205	Numéro d'acquisition GenBank: BC030679	Méthode de purification: Purification par affinité
Taille: 100ug, 0.5 mg/ml	Identification du gène (NCBI): 12525	CloneNo.: 5H10-1
Hôte: Rat	Nom complet: CD8 antigen, alpha chain	Excitation/Emission maxima wavelengths: 495 nm / 524 nm
Isotype: IgG2b, lambda		

Applications

Applications testées:
FC

Spécificité de l'espèce:
souris

Informations générales

CD8 is a transmembrane glycoprotein composed of two disulfide-linked chains. It can be present as a homodimer of CD8a or as a heterodimer of CD8a and CD8β (PMID: 3264320; 8253791). CD8 is found on most thymocytes. The majority of class I-restricted T cells express mostly the CD8aβ heterodimer while CD8αα homodimers alone have been found on some gut intraepithelial T cells, on some T cell receptor (TCR) γδ T cells and on NK cells (PMID: 2111591; 1831127; 8420975). CD8 acts as a co-receptor that binds to MHC class-I and participates in cytotoxic T cell activation (PMID: 8499079). During T cell development, CD8 is required for positive selection of CD4-/CD8+ T cells (PMID: 1968084).

Stockage

Stockage:
Store at 2-8°C. Avoid exposure to light. Stable for one year after shipment.

Tampon de stockage:
PBS with 0.09% sodium azide.

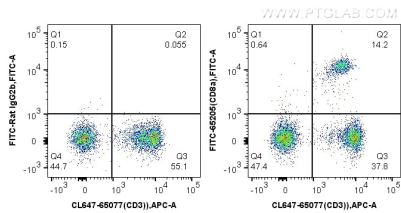
For technical support and original validation data for this product please contact:

T: 1 (888) 4PTGLAB (1-888-478-4522) (toll free in USA), or 1(312) 455-8498 (outside USA)

E: proteintech@ptglab.com
W: ptglab.com

This product is exclusively available under Proteintech Group brand and is not available to purchase from any other manufacturer.

Données de validation sélectionnées



1X10⁶ mouse splenocytes were surface stained with CoraLite® Plus 647 Anti-Mouse CD3 (CL647-65077, Clone: 17A2) and 0.13 ug FITC Plus Anti-Mouse CD8a (FITC-65205, Clone: 5H10-1) or FITC Plus rat IgG2b isotype control. Cells were not fixed.